

SSC CHSL 2022
Tier 1 Question Paper
10th March 2023
(Shift 4)



Combined Higher Secondary Level Examination Tier I 2022

Roll Number	
Candidate Name	
Venue Name	
Exam Date	14/03/2023
Exam Time	5:15 PM - 6:15 PM
Subject	CHSL Exam 2022 Tier I

Section : **English Language****Q.1 Choose the incorrectly spelt word.**

- Ans ☒ 1. Stone
☒ 2. Minyed
☒ 3. Punch
☒ 4. Crunch

Question ID : 264330124125
Status : Answered
Chosen Option : 2

Q.2 Fill in the blank with the most suitable word.
At that time, I only knew that I adored the way he laughed for no _____.

- Ans ☒ 1. just
☒ 2. disbelief
☒ 3. reason
☒ 4. account

Question ID : 264330125836
Status : Answered
Chosen Option : 3

Q.3 Improve the underlined part of the sentence. Choose 'No improvement' as an answer if the sentence is grammatically correct.
Their appointment lasted for almost an hour.

- Ans ☒ 1. lastly for
☒ 2. lasting for
☒ 3. No improvement
☒ 4. last for

Question ID : 264330124561
Status : Answered
Chosen Option : 3

Q.4 Improve the underlined part of the sentence. Choose 'No improvement' as an answer if the sentence is grammatically correct.
A young girl was kidnapped from the mainly street in 3 o'clock yesterday afternoon.

- Ans ☒ 1. main streets in
☒ 2. main street on
☒ 3. No improvement
☒ 4. main street at

Question ID : 264330124406
Status : Answered
Chosen Option : 4



Q.5 In the following question, out of the given four alternatives, select the alternative which best expresses the meaning of the Idiom/Phrase.
Neck of the woods

- Ans** ☒ 1. Neighbourhood
☒ 2. Barren land
☒ 3. Valley
☒ 4. Highways

Question ID : 264330124488
Status : Answered
Chosen Option : 3

Q.6 Choose the word that can substitute the given group of words.
A publication containing astronomical or meteorological information

- Ans** ☒ 1. Allegory
☒ 2. Bane
☒ 3. Conscription
☒ 4. Almanac

Question ID : 264330124544
Status : Answered
Chosen Option : 4

Q.7 Choose the word that can substitute the given group of words.
A substance for killing algae

- Ans** ☒ 1. Algaecide
☒ 2. Prepuce
☒ 3. Fungicide
☒ 4. Ruthenium

Question ID : 264330124127
Status : Answered
Chosen Option : 1

Q.8 Select the option that will improve the (bracketed) part of the sentence. In case of no improvement select the option 'No improvement'.
I wouldn't have (accepted anything accept) a job in Europe.

- Ans** ☒ 1. accepted everything expect
☒ 2. excepted anything accept
☒ 3. No improvement
☒ 4. accepted anything except

Question ID : 264330125876
Status : Answered
Chosen Option : 4

Q.9 Choose the word that is opposite in meaning to the given word.
Abandon

- Ans** ☒ 1. Recklessness
☒ 2. Constraint
☒ 3. Casualness
☒ 4. Spontaneity

Question ID : 264330124563
Status : Answered
Chosen Option : 2



Q.10 Choose the sentence with no spelling error.

- Ans ☒ 1. A flash of lightning revealed the mountains.
☐ 2. A flsh of lightning revaeled the mountains.
☐ 3. A flash of lightnig revealed the mountans.
☐ 4. A flash of lightning revealed the mounitans.

Question ID : 264330124126
Status : Answered
Chosen Option : 1

Q.11 Select the correct indirect form of the given sentence.
My coach said, "You should take a healthy diet."

- Ans ☐ 1. My coach told me that I should have taken a healthy diet.
☒ 2. My coach told me that I should take a healthy diet.
☐ 3. My coach told me that you should take a healthy diet.
☐ 4. My coach told me that I shall take a healthy diet.

Question ID : 264330124108
Status : Answered
Chosen Option : 1

Q.12 Choose the word that is opposite in meaning to the given word.
Incongruous

- Ans ☐ 1. Unharmonious
☐ 2. Jarring
☐ 3. Fettered
☒ 4. Appropriate

Question ID : 264330124590
Status : Answered
Chosen Option : 4

Q.13 Choose the word that is opposite in meaning to the given word.
Annex

- Ans ☒ 1. Subtract
☐ 2. Profuse
☐ 3. Protract
☐ 4. Propose

Question ID : 264330124070
Status : Answered
Chosen Option : 3

Q.14 Find the part of the given sentence that has an error in it. If there is no error, choose
'No error'.
Around 30 percent of the Indian population are estimated to have latent TB.

- Ans ☒ 1. Indian population are estimated
☐ 2. No error
☐ 3. to have latent TB.
☐ 4. Around 30 percent of the

Question ID : 264330124109
Status : Answered
Chosen Option : 1



Q.15 Rearrange the parts of the sentence in correct order.
P. gangrene, who had recovered from Covid-19 infection and
Q. gallstones resulting in gangrene of gallbladder requiring urgent surgery
R. presented with severe inflammation of gallbladder without
S. we recently successfully treated five patients for gallbladder

Ans ✓ 1. SPRQ

✗ 2. QPRS

✗ 3. RQPS

✗ 4. PRQS

Question ID : 264330124118

Status : Answered

Chosen Option : 1

Q.16 Choose the word that can substitute the given group of words.
A person who is interested in material gains and is hostile to art/culture

Ans ✗ 1. Perfectionist

✗ 2. Sage

✓ 3. Philistine

✗ 4. Egghead

Question ID : 264330124050

Status : Answered

Chosen Option : 3

Q.17 In the following question, out of the given four alternatives, select the alternative which best expresses the meaning of the Idiom/Phrase.
At daggers drawn with

Ans ✓ 1. To be bitterly hostile towards each other

✗ 2. At the lowest estimate

✗ 3. To accept someone

✗ 4. To help someone in time of need

Question ID : 264330124123

Status : Answered

Chosen Option : 1

Q.18 Find the part of the given sentence that has an error in it. If there is no error, choose 'No error'.
The fiscal deficit has to be held in check because it represent the government's claim on the non-government sector's savings.

Ans ✗ 1. No error

✓ 2. because it represent the government's claim

✗ 3. on the non-government sector's savings.

✗ 4. The fiscal deficit has to be held in check

Question ID : 264330124474

Status : Answered

Chosen Option : 2



Q.19 Choose the word that means the same as the given word.
Genial

- Ans ☒ 1. Tense
☒ 2. Lacuna
☒ 3. Laconic
☒ 4. Convivial

Question ID : 264330124129
Status : Answered
Chosen Option : 4

Q.20 Select the correct passive form of the given sentence.
He built a website from scratch.

- Ans ☒ 1. A website has been built from scratch by him.
☒ 2. A website was built from scratch by him.
☒ 3. A website was building from scratch by him.
☒ 4. A website is built from scratch by him.

Question ID : 264330124471
Status : Answered
Chosen Option : 2

Comprehension:

In the following passage some of the words have been deleted. Read the passage carefully and select the correct answer for the given blank out of the four alternatives.

Each year, the U.S. Department of Agriculture and the Environmental Protection Agency (1)_____ federal pollinator experts to share the latest scientific findings on bee and pollinator health, and assess the status of (2)_____ important insects, birds, bats and other species. One clear (3)_____ from this year's meeting was that climate change (4)_____ a new and formidable stressor for bees, potentially amplifying previously known issues in ways that scientists can't yet (5)_____ but need to prepare for.

SubQuestion No : 21

Q.21 Select the most appropriate option to fill in blank number 1.

- Ans ☒ 1. accost
☒ 2. host
☒ 3. roast
☒ 4. mandates

Question ID : 264330124112
Status : Answered
Chosen Option : 1



Comprehension:

In the following passage some of the words have been deleted. Read the passage carefully and select the correct answer for the given blank out of the four alternatives.
Each year, the U.S. Department of Agriculture and the Environmental Protection Agency (1)_____ federal pollinator experts to share the latest scientific findings on bee and pollinator health, and assess the status of (2)_____ important insects, birds, bats and other species. One clear (3)_____ from this year's meeting was that climate change (4)_____ a new and formidable stressor for bees, potentially amplifying previously known issues in ways that scientists can't yet (5)_____ but need to prepare for.

SubQuestion No : 22**Q.22 Select the most appropriate option to fill in blank number 2.**

- Ans ☒ 1. this
☒ 2. thus
☒ 3. those
☒ 4. these

Question ID : 264330124113

Status : Answered

Chosen Option : 4

Comprehension:

In the following passage some of the words have been deleted. Read the passage carefully and select the correct answer for the given blank out of the four alternatives.
Each year, the U.S. Department of Agriculture and the Environmental Protection Agency (1)_____ federal pollinator experts to share the latest scientific findings on bee and pollinator health, and assess the status of (2)_____ important insects, birds, bats and other species. One clear (3)_____ from this year's meeting was that climate change (4)_____ a new and formidable stressor for bees, potentially amplifying previously known issues in ways that scientists can't yet (5)_____ but need to prepare for.

SubQuestion No : 23**Q.23 Select the most appropriate option to fill in blank number 3.**

- Ans ☒ 1. standard
☒ 2. takeaway
☒ 3. thesis
☒ 4. diffidence

Question ID : 264330124114

Status : Answered

Chosen Option : 2

Comprehension:

In the following passage some of the words have been deleted. Read the passage carefully and select the correct answer for the given blank out of the four alternatives.
Each year, the U.S. Department of Agriculture and the Environmental Protection Agency (1)_____ federal pollinator experts to share the latest scientific findings on bee and pollinator health, and assess the status of (2)_____ important insects, birds, bats and other species. One clear (3)_____ from this year's meeting was that climate change (4)_____ a new and formidable stressor for bees, potentially amplifying previously known issues in ways that scientists can't yet (5)_____ but need to prepare for.

SubQuestion No : 24**Q.24 Select the most appropriate option to fill in blank number 4.**

- Ans ☒ 1. has become
☒ 2. became
☒ 3. was became
☒ 4. becoming

Question ID : 264330124115

Status : Answered

Chosen Option : 2



Comprehension:

In the following passage some of the words have been deleted. Read the passage carefully and select the correct answer for the given blank out of the four alternatives.
Each year, the U.S. Department of Agriculture and the Environmental Protection Agency (1)_____ federal pollinator experts to share the latest scientific findings on bee and pollinator health, and assess the status of (2)_____ important insects, birds, bats and other species. One clear (3)_____ from this year's meeting was that climate change (4)_____ a new and formidable stressor for bees, potentially amplifying previously known issues in ways that scientists can't yet (5)_____ but need to prepare for.

SubQuestion No : 25**Q.25** Select the most appropriate option to fill in blank number 5.

- Ans ☒ 1. shrimp
☒ 2. predict
☒ 3. shun
☒ 4. notify

Question ID : 264330124116
Status : Answered
Chosen Option : 2

Section : General Intelligence**Q.1** In the following question, select the missing number from the given series.
32, 35, 39, 42, 46, 49, ?

- Ans ☒ 1. 53
☒ 2. 50
☒ 3. 51
☒ 4. 52

Question ID : 264330126346
Status : Answered
Chosen Option : 1

Q.2 Words given on the left side of (::) are related with each other by some Logic/Rule /Relation. Select the missing word/word pair on the right side of (::) from the given alternatives based on the same Logic/Rule/Relation.
Mammal : Man :: Reptile : ?

- Ans ☒ 1. Butterfly
☒ 2. Lizard
☒ 3. Rat
☒ 4. Whale

Question ID : 264330127250
Status : Answered
Chosen Option : 2



Q.3 Select the option figure in which the given figure is embedded. (rotation is NOT allowed)

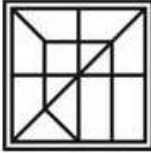


Ans

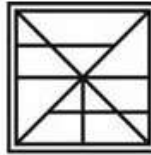
✗ 1.



✗ 2.



✓ 3.



✗ 4.



Question ID : 264330127335

Status : Not Answered

Chosen Option : --

Q.4 After interchanging the given two numbers (Not digits) what will be the values of expression (I) and (II) respectively ?

4 and 6

I. $8 - 4 \times 3 + 6 \div 2$

II. $4 + 3 \times 6 - 8 \div 2$

Ans ✗ 1. 8 and 10

✗ 2. 10 and 8

✗ 3. 14 and -8

✓ 4. -8 and 14

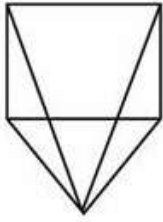
Question ID : 264330126990

Status : Answered

Chosen Option : 3



Q.5 How many triangles are there in the given figure?



- Ans
- ☒ 1. 8
 - ☒ 2. 10
 - ☒ 3. 11
 - ☒ 4. 9

Question ID : 264330127234
Status : Answered
Chosen Option : 3

Q.6 Select the figure from the given options that can replace the question mark (?) in the following series.



- Ans
- ☒ 1.
 - ☒ 2.
 - ☒ 3.
 - ☒ 4.

Question ID : 264330126808
Status : Answered
Chosen Option : 3

Q.7 Select the option in which the numbers shares the same relationship in set as that shared by the numbers in the given set.
(NOTE: Operations should be performed on the whole numbers, without breaking down the numbers into its constituent digits.
E.g.13 – Operations on 13 such as adding /subtracting /multiplying etc. to 13 can be performed. Breaking down 13 into 1 and 3 and then performing mathematical operations on 1 and 3 is not allowed)
(101, 10201, 10302)
(95, 9025, 9120)

- Ans
- ☒ 1. (103, 10069, 10172)
 - ☒ 2. (105, 11025, 11230)
 - ☒ 3. (104, 10816, 10820)
 - ☒ 4. (102, 10404, 10506)

Question ID : 264330126793
Status : Answered
Chosen Option : 1



Q.8 In a certain code language, 'FONT' is coded as '714', 'GLUE' is coded as '494'. What is the code for 'JOKE' in that code language?

- Ans ☒ 1. 396
☒ 2. 400
☒ 3. 450
☒ 4. 456

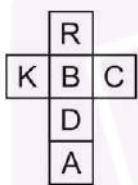
Question ID : 264330126798
Status : Not Answered
Chosen Option : --

Q.9 Words given on the left side of (::) are related with each other by some Logic/Rule /Relation. Select the missing word/word pair on the right side of (::) from the given alternatives based on the same Logic/Rule/Relation.
Ranchi : Jharkhand :: Dispur : ?

- Ans ☒ 1. Sikkim
☒ 2. Nagaland
☒ 3. Assam
☒ 4. Meghalaya

Question ID : 264330126345
Status : Answered
Chosen Option : 3

Q.10 A cube is made by folding the given sheet. In the cube so formed, which letter will be on the face opposite to the face showing 'A' ?



- Ans ☒ 1. B
☒ 2. C
☒ 3. R
☒ 4. K

Question ID : 264330126982
Status : Answered
Chosen Option : 1

Q.11 In a certain code language, 'ALWAYS' is coded as 'AKYAXU'. What is the code for 'BEYOND' in that code language?

- Ans ☒ 1. BDAOMG
☒ 2. BDAOME
☒ 3. BDAOMF
☒ 4. BDBOMF

Question ID : 264330126797
Status : Answered
Chosen Option : 3



Q.12 Select the correct option that indicates the arrangement of the given words in a logical and meaningful order.

1. Thighs
2. Stomach
3. Nose
4. Lips
5. Skull

Ans ☒ 1. 1, 2, 5, 3, 4
☒ 2. 1, 2, 3, 4, 5
☒ 3. 1, 2, 4, 3, 5
☒ 4. 1, 2, 3, 5, 4

Question ID : 264330127146
Status : Answered
Chosen Option : 3

Q.13 Select the combination of letters that when sequentially placed in the blanks of the given series will complete the series.
j t m _ r _ j t _ p r s _ t m p r _ j _ m p r s

Ans ☒ 1. p s m j s t
☒ 2. p s s j s t
☒ 3. p s m j t s
☒ 4. p m s j s t

Question ID : 264330126801
Status : Answered
Chosen Option : 1

Q.14 In the following question, select the odd word pair from the given alternatives.

Ans ☒ 1. Scalpel – Surgeon
☒ 2. Axe – Woodcutter
☒ 3. Sword – Warrior
☒ 4. Sculptor – Chisel

Question ID : 264330127155
Status : Answered
Chosen Option : 4

Q.15 If $5 \# 2 = 25$ and $8 \# 2 = 64$, then $11 \# 2 = ?$

Ans ☒ 1. 143
☒ 2. 99
☒ 3. 121
☒ 4. 1331

Question ID : 264330126348
Status : Answered
Chosen Option : 3



Q.16 In the following question below are given some statements followed by some conclusions based on those statements. Taking the given statements to be true even if they seem to be at variance from commonly known facts. Read all the conclusions and then decide which of the given conclusion logically follows the given statements.

Statements:

I. All D are E.

II. Some E are F.

Conclusions:

I. All D are F.

II. Some F are E.

III. All E are D.

Ans ☒ 1. Only conclusion III follows

☒ 2. Only conclusion II follows

☒ 3. All conclusion follows

☒ 4. Only conclusion I follows

Question ID : 264330126806

Status : Answered

Chosen Option : 2

Q.17 I is the brother of K. H is the wife of I. J is the mother of L. K is the brother of J. How K is related to L?

Ans ☒ 1. Nephew

☒ 2. Maternal Uncle

☒ 3. Brother

☒ 4. Father

Question ID : 264330126802

Status : Answered

Chosen Option : 2

Q.18 In the following question, select the odd letter/letters from the given alternatives.

Ans ☒ 1. ZVR

☒ 2. QMI

☒ 3. OKG

☒ 4. WTP

Question ID : 264330126804

Status : Answered

Chosen Option : 4

Q.19 Select the option in which the numbers share the same relationship in set as that shared by the numbers in the given set. (NOTE: Operations should be performed on the whole numbers, without breaking down the numbers into its constituent digits. E.g.13 – Operations on 13 such as adding /subtracting /multiplying etc. to 13 can be performed. Breaking down 13 into 1 and 3 and then performing mathematical operations on 1 and 3 is not allowed)
(32, 24, 8)
(48, 42, 6)

Ans ☒ 1. (64, 62, 8)

☒ 2. (56, 50, 6)

☒ 3. (16, 14, 4)

☒ 4. (18, 12, 4)

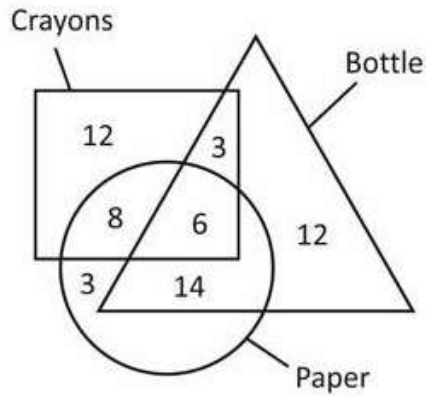
Question ID : 264330127242

Status : Answered

Chosen Option : 2



Q.20 How many paper are not bottles?



- Ans
- ☒ 1. 17
 - ☒ 2. 14
 - ☒ 3. 11
 - ☒ 4. 8

Question ID : 264330127238

Status : Answered

Chosen Option : 3

Q.21 Words given on the left side of (::) are related with each other by some Logic/Rule /Relation. Select the missing word/word pair on the right side of (::) from the given alternatives based on the same Logic/Rule/Relation.
Sister : Brother :: Niece : ?

- Ans
- ☒ 1. Mother
 - ☒ 2. Brother
 - ☒ 3. Daughter
 - ☒ 4. Nephew

Question ID : 264330126925

Status : Answered

Chosen Option : 4

Q.22 Select the option that is related to the second number in the same way as the third number is related to the fourth number and fifth number is related to sixth number.
? : 225 :: 9 : 169 :: 12 : 256

- Ans
- ☒ 1. 13
 - ☒ 2. 11
 - ☒ 3. 16
 - ☒ 4. 15

Question ID : 264330127216

Status : Answered

Chosen Option : 2



Q.23 Select the option in which the numbers shares the same relationship in set as that shared by the numbers in the given set. (NOTE: Operations should be performed on the whole numbers, without breaking down the numbers into its constituent digits. E.g.13 – Operations on 13 such as adding /subtracting /multiplying etc. to 13 can be performed. Breaking down 13 into 1 and 3 and then performing mathematical operations on 1 and 3 is not allowed)
(46, 93, 187)
(123, 247, 495)

- Ans ☒ 1. (208, 418, 837)
☒ 2. (313, 627, 1255)
☒ 3. (111, 213, 427)
☒ 4. (184, 369, 729)

Question ID : 264330126917

Status : Answered

Chosen Option : 2

Q.24 Two positions of a dice are given below. What can come on the adjacent faces of the face containing 'K' on it?



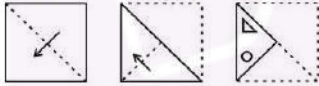
- Ans ☒ 1. H and T
☒ 2. H and B
☒ 3. B and A
☒ 4. A and H

Question ID : 264330126732

Status : Answered

Chosen Option : 3

Q.25 The sequence of folding a piece of paper and the manner in which the folded paper has been cut is shown in the following figures. How would this paper look when unfolded?



- Ans ☒ 1.
- ☒ 2.
- ☒ 3.
- ☒ 4.

Question ID : 264330127561

Status : Answered

Chosen Option : 2



Q.1 In $\triangle PQR$, $\angle Q = 90$ degrees and QX is perpendicular to PR . If $PQ = 15$ cm and $PR = 25$ cm, then what is the ratio of $PX : XR$?

- Ans**
- ☒ 1. 2 : 3
 - ☒ 2. 7 : 18
 - ☒ 3. 1 : 4
 - ☒ 4. 9 : 16

Question ID : 264330127801
Status : Answered
Chosen Option : 4

Q.2 In $\triangle ABC$, Z is a point on side BC and $AB = AC$. If $\angle AZB = 90$ degree and $BC = 42$ cm, then what will be the length of BZ ?

- Ans**
- ☒ 1. 21 cm
 - ☒ 2. 32 cm
 - ☒ 3. 28 cm
 - ☒ 4. 35 cm

Question ID : 264330128125
Status : Answered
Chosen Option : 1

Q.3 What are the last three digit of the multiplication 654321×123456 ?

- Ans**
- ☒ 1. 376
 - ☒ 2. 344
 - ☒ 3. 324
 - ☒ 4. 352

Question ID : 264330128005
Status : Answered
Chosen Option : 1

Q.4 If the difference between the two numbers is 20 percent of their sum, then what is the ratio of larger number and smaller number?

- Ans**
- ☒ 1. 6 : 5
 - ☒ 2. 5 : 4
 - ☒ 3. 4 : 3
 - ☒ 4. 3 : 2

Question ID : 264330127794
Status : Answered
Chosen Option : 4

Q.5 After two successive discounts of 40 percent and 20 percent an article is sold for Rs. 4632. What is the marked price of the article?

- Ans**
- ☒ 1. Rs. 7650
 - ☒ 2. Rs. 8870
 - ☒ 3. Rs. 9650
 - ☒ 4. Rs. 8050

Question ID : 264330128218
Status : Answered
Chosen Option : 3



Q.6 A chord of length 48 cm is at a distance of 7 cm from the centre of the circle. What is the length of the chord of the same circle which is at a distance of 15 cm from the centre of the circle?

- Ans**
- ☒ 1. 40 cm
 - ☐ 2. 45 cm
 - ☐ 3. 35 cm
 - ☐ 4. 42 cm

Question ID : 264330127799
Status : Answered
Chosen Option : 1

Q.7 Vinay sells an article at a profit of 20 percent. If both the cost price and selling price are reduced by Rs. 20, then the profit becomes 40 percent. What is the initial cost price?

- Ans**
- ☐ 1. Rs. 80
 - ☐ 2. Rs. 60
 - ☐ 3. Rs. 50
 - ☒ 4. Rs. 40

Question ID : 264330128220
Status : Answered
Chosen Option : 4

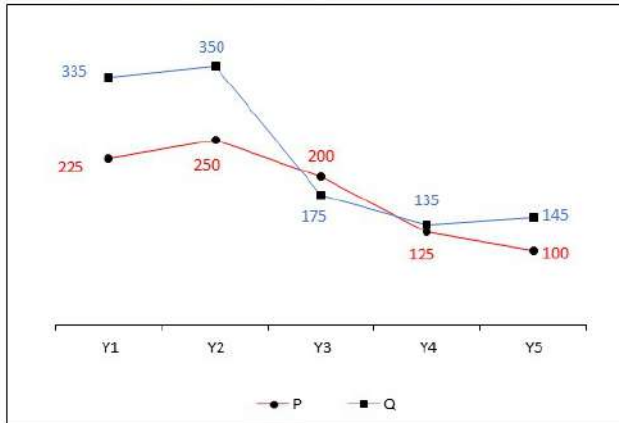
Q.8 A is thrice as good a workman as B and together they can finish a work in 32 days. In how many days will B alone complete the same work?

- Ans**
- ☐ 1. 96 days
 - ☐ 2. 104 days
 - ☐ 3. 112 days
 - ☒ 4. 128 days

Question ID : 264330128139
Status : Answered
Chosen Option : 4



Q.9 The line chart given below shows the GDP of two countries P and Q in different five years.



L1 = The total GDP of country P in all the 5 years.

L2 = The total GDP of country Q in all the 5 years.

What is the value of $(L2 - L1)$?

- Ans
- ☒ 1. 180
 - ☒ 2. 240
 - ☒ 3. 280
 - ☒ 4. 160

Question ID : 264330128237
Status : Answered
Chosen Option : 2

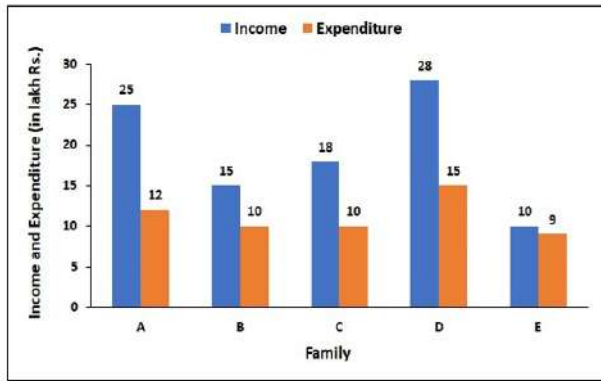
Q.10 A person invested a total sum of Rs. 15,500 in three different schemes of simple interest at the annual rate of 4 percent, 6 percent and 10 percent. At the end of one year he got same interest in all three schemes. What is the sum invested at the rate of 6 percent?

- Ans
- ☒ 1. Rs. 5400
 - ☒ 2. Rs. 5000
 - ☒ 3. Rs. 5500
 - ☒ 4. Rs. 6500

Question ID : 264330128147
Status : Answered
Chosen Option : 2



Q.11 The following bar graph shows the income and the expenditure (in lakh Rs.) of five families in the year 2021. What is the savings of families A, C and E together?



- Ans**
- ☒ 1. Rs.32 lakhs
 - ☒ 2. Rs.30 lakhs
 - ☒ 3. Rs.22 lakhs
 - ☒ 4. Rs.21 lakhs

Question ID : 264330128461
Status : Answered
Chosen Option : 3

Q.12 What is the value of $\frac{\sin \theta + \cos \theta}{\sin \theta - \cos \theta} + \frac{\sin \theta - \cos \theta}{\sin \theta + \cos \theta}$?

- Ans**
- ☒ 1. $1/(\sin^2 \theta - \cos^2 \theta)$
 - ☒ 2. $2(\sin^2 \theta - \cos^2 \theta)$
 - ☒ 3. $2/(\sin^2 \theta - \cos^2 \theta)$
 - ☒ 4. $\sin^2 \theta - \cos^2 \theta$

Question ID : 264330127808
Status : Answered
Chosen Option : 3



Q.13 The table given below shows the number of male teacher and female teachers in 5 schools.

Schools	Male teachers	Female teachers
J	180	240
K	240	210
L	210	60
M	150	30
N	90	90

A1 = The average number of female teachers in all the 5 schools.

A2 = The average number of male teachers in all the 5 schools.

What is the value of (A1 + A2)?

- Ans
- ✓ 1. 300
 - ✗ 2. 48
 - ✗ 3. 126
 - ✗ 4. 174

Question ID : 264330128163
Status : Answered
Chosen Option : 1

Q.14 Angle subtended by a chord MN on the circumference of a circle is 90 degree. If radius of the circle is 12 cm, then what will be the length of chord MN?

- Ans
- ✗ 1. 30 cm
 - ✓ 2. 24 cm
 - ✗ 3. 6 cm
 - ✗ 4. 36 cm

Question ID : 264330126479
Status : Answered
Chosen Option : 2

Q.15 If $\cot 3A = \tan (A - 36^\circ)$, then what is the value of A?

- Ans
- ✗ 1. 33.5 degree
 - ✗ 2. 25 degree
 - ✗ 3. 30 degree
 - ✓ 4. 31.5 degree

Question ID : 264330128357
Status : Answered
Chosen Option : 4

Q.16 Average of 6 consecutive even numbers is 35. What will be the sum of smallest and largest even number among these 6 numbers?

- Ans
- ✗ 1. 68
 - ✗ 2. 72
 - ✓ 3. 70
 - ✗ 4. 66

Question ID : 264330126478
Status : Answered
Chosen Option : 3



Q.17 Half of the perimeter of a rectangle is 30 cm. If the length of the rectangle is 6 cm more than its breadth, then what is the area of the rectangle?

- Ans
- ✓ 1. 216 cm^2
 - ✗ 2. 250 cm^2
 - ✗ 3. 185 cm^2
 - ✗ 4. 195 cm^2

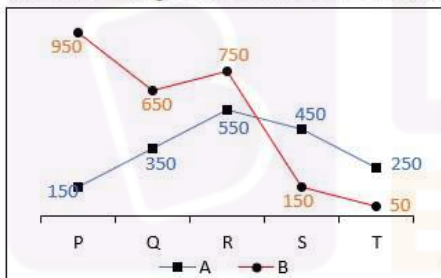
Question ID : 264330127791
Status : Answered
Chosen Option : 1

Q.18 What is the value of $\frac{7 \times 4 \div 8}{5 \times 25 \div 125} + \frac{5 \times 4 \div 8}{8 \times 4 \div 16} - \frac{7 \times 4 \div 2}{8 \times 7 \div 4}$?

- Ans
- ✗ 1. 4
 - ✗ 2. $13/4$
 - ✓ 3. $15/4$
 - ✗ 4. $9/2$

Question ID : 264330127806
Status : Answered
Chosen Option : 3

Q.19 The line chart given below shows the sales of two companies A and B in 5 years.



J1 = The total sales of A in all years.

J2 = The total sales of B in all years.

What is the value of $(J2 - J1)$?

- Ans
- ✗ 1. 600
 - ✗ 2. 400
 - ✗ 3. 1000
 - ✓ 4. 800

Question ID : 264330127935
Status : Answered
Chosen Option : 4



Q.20 A man makes four trips of equal distances. His speed on first trip was 720 km/hr and in each subsequent trip his speed was half of the previous trip. What is the average speed of the man in these four trips?

- Ans**
- ☒ 1. 104 km/hr
 - ☒ 2. 156 km/hr
 - ☒ 3. 192 km/hr
 - ☒ 4. 288 km/hr

Question ID : 264330127790
Status : Answered
Chosen Option : 3

Q.21 If $9a + 9b + 9c = 81$ and $4ab + 4bc + 4ca = 160$, then what is the value of $6a^2 + 6b^2 + 6c^2$?

- Ans**
- ☒ 1. 1
 - ☒ 2. 3
 - ☒ 3. 4
 - ☒ 4. 6

Question ID : 264330128229
Status : Answered
Chosen Option : 4

Q.22 If $a + \frac{1}{a} = 8$, then what is the value of $\frac{1}{a^4} + a^4$?

- Ans**
- ☒ 1. 4098
 - ☒ 2. 3846
 - ☒ 3. 3842
 - ☒ 4. 4094

Question ID : 264330127802
Status : Answered
Chosen Option : 3

Q.23 If $\sin P = \frac{15}{22}$, then what is the value of $\tan P$?

- Ans**
- ☒ 1. $\frac{16}{\sqrt{259}}$
 - ☒ 2. $\frac{22}{\sqrt{259}}$
 - ☒ 3. $\frac{14}{\sqrt{259}}$
 - ☒ 4. $\frac{15}{\sqrt{259}}$

Question ID : 264330126480
Status : Answered
Chosen Option : 4



Q.24 If $a : b : c = 2 : 3 : 5$ and $5b - a + 2c = 115$, then what is the value of b ?

- Ans ☒ 1. 15
☐ 2. 12
☐ 3. 6
☐ 4. 24

Question ID : 264330127796
Status : Answered
Chosen Option : 1

Q.25 The average weight of 100 students is 34 kg. The average weight of first 49 students is 34 kg and of last 50 students is 32 kg. What is the weight of the 50th student?

- Ans ☐ 1. 138 kg
☒ 2. 134 kg
☐ 3. 130 kg
☐ 4. 136 kg

Question ID : 264330127792
Status : Answered
Chosen Option : 2

Section : General awareness

Q.1 In 2018, India was the _____ producer of groundnut in the world.

- Ans ☐ 1. fourth largest
☐ 2. third largest
☐ 3. largest
☒ 4. second largest

Question ID : 264330125046
Status : Not Answered
Chosen Option : --

Q.2 In 1929, under the presidency of _____, the Lahore Congress formalised the demand of Purna Swaraj.

- Ans ☐ 1. Sardar Vallabhbhai Patel
☐ 2. Mahatma Gandhi
☐ 3. Subhas Chandra Bose
☒ 4. Jawaharlal Nehru

Question ID : 264330125325
Status : Answered
Chosen Option : 4



Q.3 Which of the following pairs regarding soil is correct?
I. Forest soil – These soils are loamy and silty in valley sides
II. Black soil – generally poor in phosphoric contents

- Ans** ☒ 1. Both I and II
☒ 2. Only I
☒ 3. Only II
☒ 4. Neither I nor II

Question ID : 264330125248
Status : Not Answered
Chosen Option : --

Q.4 Which of the following pair of "player – sports" is correct?
I. Anshu Malik – Boxing
II. Eldhose Paul – Triple Jump

- Ans** ☒ 1. Only II
☒ 2. Neither I nor II
☒ 3. Only I
☒ 4. Both I and II

Question ID : 264330125257
Status : Not Answered
Chosen Option : --

Q.5 Which of the following statements is NOT correct regarding the stratosphere?

- Ans** ☒ 1. It lies above the mesosphere.
☒ 2. It extends up to a height of 50 km.
☒ 3. It contains a layer of ozone gas.
☒ 4. This layer is almost free from clouds.

Question ID : 264330125322
Status : Answered
Chosen Option : 4

Q.6 Which of the following shortcut key is used to start a new line in the same cell in MS-Excel 365?

- Ans** ☒ 1. Tab + Enter
☒ 2. Alt + Enter
☒ 3. Ctrl + Enter
☒ 4. Shift + Enter

Question ID : 264330124884
Status : Answered
Chosen Option : 3

Q.7 11th National Seed Congress was held in ____.

- Ans** ☒ 1. Mysuru
☒ 2. New Delhi
☒ 3. Chennai
☒ 4. Gwalior

Question ID : 264330125238
Status : Not Answered
Chosen Option : --



Q.8 Which of the following is correct regarding the Private Income?

- Ans ☐ 1. Private Income = Factor income from net domestic product accruing to the private sector + National debt interest – Net factor income from abroad + Current transfers from government + Other net transfers from the rest of the world
- ☐ 2. Private Income = Factor income from net domestic product accruing to the private sector + National debt interest + Net factor income from abroad – Current transfers from government + Other net transfers from the rest of the world
- ☒ 3. Private Income = Factor income from net domestic product accruing to the private sector + National debt interest + Net factor income from abroad + Current transfers from government + Other net transfers from the rest of the world
- ☐ 4. Private Income = Factor income from net domestic product accruing to the private sector – National debt interest + Net factor income from abroad + Current transfers from government + Other net transfers from the rest of the world

Question ID : 264330124890

Status : Not Attempted and
Marked For Review

Chosen Option : --

Q.9 Which country hosted the 2023 Men's FIH Hockey World Cup?

- Ans ☒ 1. India
- ☐ 2. England
- ☐ 3. Spain
- ☐ 4. France

Question ID : 264330125030

Status : Answered

Chosen Option : 1

Q.10 _____ and Nitin Gadkari inaugurated the 81st annual session of the Indian Roads Congress in Lucknow in October 2022.

- Ans ☐ 1. Narendra Modi
- ☒ 2. Yogi Adityanath
- ☐ 3. Rahul Gandhi
- ☐ 4. Smriti Irani

Question ID : 264330125512

Status : Answered

Chosen Option : 1

Q.11 Which of the following is the correct representation of number of atoms?

- Ans ☒ 1. $(\text{given mass/molar mass}) \times \text{Avogadro number}$
- ☐ 2. $(\text{avogadro number/given mass}) \times \text{molar mass}$
- ☐ 3. $(\text{molar mass/given mass}) \times \text{Avogadro number}$
- ☐ 4. $(\text{given mass/ Avogadro number}) \times \text{molar mass}$

Question ID : 264330125243

Status : Not Answered

Chosen Option : --



Q.12 Identify the person from the given statements.
Popularly known as the “King of Pop”, the best-selling American singer, songwriter and dancer.

- Ans
- ☒ 1. Benny Andersson
 - ☒ 2. John Lennon
 - ☒ 3. Elton John
 - ☒ 4. Michael Jackson

Question ID : 264330125252
Status : Answered
Chosen Option : 4

Q.13 Which of the following comes under 5th schedule of the Indian constitution?

- Ans
- ☒ 1. Provisions related to Schedule Areas and Scheduled Tribes
 - ☒ 2. Provisions related to Tribal areas in states of Assam, Meghalaya, Tripura, Mizoram
 - ☒ 3. Provisions related to Oaths or Affirmations
 - ☒ 4. Provisions related to Languages

Question ID : 264330125328
Status : Not Attempted and Marked For Review
Chosen Option : --

Q.14 Elon Musk who was awarded in Starmus Festival's the Stephen Hawking Medal for Science Communication is the CEO of ____.

- Ans
- ☒ 1. Microsoft
 - ☒ 2. Tesla
 - ☒ 3. Adobe Inc
 - ☒ 4. Flipkart

Question ID : 264330125051
Status : Answered
Chosen Option : 2

Q.15 World Environment Day is held every year on ____.

- Ans
- ☒ 1. 5th June
 - ☒ 2. 1st January
 - ☒ 3. 29th August
 - ☒ 4. 1st July

Question ID : 264330125239
Status : Answered
Chosen Option : 1

Q.16 Which among the following is the largest container port in India as of October 2022?

- Ans
- ☒ 1. Port Blair
 - ☒ 2. Tuticorin Port
 - ☒ 3. Paradip Port
 - ☒ 4. Jawaharlal Nehru Port

Question ID : 264330125520
Status : Answered
Chosen Option : 4



Q.17 The part VII of the Indian constitution has been omitted. It is related with which of the following?

- Ans ☒ 1. Provision relating to property
☒ 2. States in part B of the first schedule
☒ 3. Armed forces in states in part A of the second schedule
☒ 4. Reservation for Anglo –Indian communities in parliament

Question ID : 264330124904
Status : Answered
Chosen Option : 2

Q.18 Which of the following statements is correct regarding the features of a perfectly competitive market?

- I. The market consists of a large number of buyers and sellers.
II. Information is perfect.

- Ans ☒ 1. Only I
☒ 2. Neither I nor II
☒ 3. Both I and II
☒ 4. Only II

Question ID : 264330125241
Status : Answered
Chosen Option : 1

Q.19 Which among the following dance forms is not related to Karnataka?

- Ans ☒ 1. Rauf
☒ 2. Huttari
☒ 3. Suggi
☒ 4. Karaga

Question ID : 264330125536
Status : Answered
Chosen Option : 1

Q.20 Akham Lakshmi Devi received the sangeet Natak Akademi Award in 2018 for her contribution to _____.

- Ans ☒ 1. Bharatnatyam Dance
☒ 2. Manipuri Dance
☒ 3. Kathak Dance
☒ 4. Sattriya Dance

Question ID : 264330124835
Status : Not Answered
Chosen Option : --

Q.21 Which of the following Harappan town was located on Khadir Beyt in the Runn of Kutch and was divided into three parts?

- Ans ☒ 1. Sotka-koh
☒ 2. Chanhudaro
☒ 3. Surkotada
☒ 4. Dholavira

Question ID : 264330124899
Status : Answered
Chosen Option : 4



Q.22 Which team was the Pro Kabaddi League (PKL) Season 8 winner?

- Ans
- ☐ 1. Bengal Warriors
 - ☐ 2. Bengaluru Bulls
 - ☒ 3. Dabang Delhi K.C.
 - ☐ 4. Patna Pirates

Question ID : 264330125355
Status : Answered
Chosen Option : 3

Q.23 Behind the cornea, there is a dark muscular structure called the _____.

- Ans
- ☐ 1. retina
 - ☐ 2. pupil
 - ☒ 3. iris
 - ☐ 4. lens

Question ID : 264330124892
Status : Not Answered
Chosen Option : --

Q.24 Which of the statements is NOT correct regarding energy?

- Ans
- ☐ 1. The energy possessed by a body due to its change in position or shape is called the potential energy.
 - ☒ 2. An object of mass m moving with velocity v has a kinetic energy of $(mv) / 2$.
 - ☐ 3. The gravitational potential energy of an object of mass, M raised through a height, H from the earth's surface is given by MgH .
 - ☐ 4. An object in motion possesses what is known as the kinetic energy of the object.

Question ID : 264330124894
Status : Not Answered
Chosen Option : --

Q.25 Which of the following is a magnetic disk?

- Ans
- ☒ 1. Winchester
 - ☐ 2. DVD
 - ☐ 3. CD-RW
 - ☐ 4. CD-R

Question ID : 264330125308
Status : Not Answered
Chosen Option : --



Buy Test Series

Unlock All 650+ Mock Tests for SSC & Railway

- Unlimited Access
- All Exams covered
- Designed by Experts
- Performance Analysis