

# ISRO VS BARC VS DRDO



# ISRO VS BARC VS DRDO

More than 60% of the total Research & Development budget of the Government of India goes to these research organizations collectively. They are large research organizations putting their heart and soul into research with varying degrees of success in achieving their missions. So, the Question arises Which is better ISRO or BARC?

To find out **ISRO VS BARC**, Which is better ISRO or BARC or DRDO? We tracked the job offerings in each of the labs and institutions of these two organizations and scanned their recruitments over the last 12 months. With over 1,000 vacancies every year these institutes recruit the best you Scientists from Country.

More than 60% of the total Research & Development budget of the Government of India goes to these research organizations collectively. They are large research organizations putting their heart and soul into research with varying degrees of success in achieving their missions. So, the Question arises Which is better ISRO or BARC?

To find out **ISRO VS BARC**, Which is better ISRO or BARC or DRDO? We tracked the job offerings in each of the labs and institutions of these two organizations and scanned their recruitments over the last 12 months. With over 1,000 vacancies every year these institutes recruit the best you Scientists from Country.

## About BARC (Bhabha Atomic Research Centre)

Bhabha Atomic Research Centre is a highly reputed research Centre that provides excellent career opportunities in Nuclear Science and Engineering & Technology for young aspiring scientists.

### Recruitment for Scientists in Department of Atomic Energy

SCIENTISTS RECRUITMENT IN THE DEPARTMENT OF ATOMIC ENERGY			
Recruitment Channel	Positions	Eligibility	Remarks
Science postgraduates & Engineering graduates (OCES) at BARC Training School	Scientific Officer 'C'	Engineering/ science disciplines graduates with BE/ BTech/ MTech/ MSc with a minimum of 60% less than 26 years	<ul style="list-style-type: none"><li>• Training will be provided at BARC Training School for one year.</li></ul>
IITs and BARC Training School runs DAE Graduate Fellowship Scheme	Scientific Officer 'C'	<ul style="list-style-type: none"><li>• BE/ BTech/ MSc</li><li>• GATE score for Engineers</li><li>• GATE score/ written test for scientists.</li><li>• Less than 26 years</li></ul>	Graduate engineers undergo a two-year MTech program in different specializations and are paid stipends and tuition fees to study in collaboration with select Indian Institutes of Technology (IITs).

Special Recruitment	Scientific Officer 'C' - Safety; Radiological Physics	<ul style="list-style-type: none"> <li>BE/ BTech in chemical/ mechanical/ electrical engineering with 60% and degree/diploma in industrial safety</li> <li>Relevant experience; MSc with 60% and diploma in radiological physics</li> </ul>	Recruitments are done to meet the requirement of scientific manpower
---------------------	---	---	--

## Defense Research and Development Organization (DRDO)

Defense Research and Development Organization (DRDO) was established in 1958 which has grown from a small organization with ten laboratories to over 50 laboratories that engage 7,500 scientists and nearly 22,000 other scientific, technical, and supporting personnel.

DRDO deals with equipment needs and the qualitative specifications laid down by the three services - Army, Navy, and Air Force.

### Recruitment of Scientists at DRDO

RECRUITMENT OF SCIENTISTS AT DRDO			
Recruitment Channel	Positions	Eligibility	Remarks
Scientist Entry Test (SET) Direct Entry	Class-I Officer Posts - Group A	BE/ BTech degree in /Electrical/ Electronics & Communication/Chemical / Computer Science / Mechanical Engineering in first division.	All India entrance exam that is conducted by DRDO SET is every year on the first Sunday of September.  Aspirants can apply for the test in the month of June.  Exam duration: 3 hours
Campus Selection	Scientist 'B'	BE/ BTech/BSc (Engineering) Final year/ Pre-final year students who have cleared all papers and secured First Class or equivalent CGPA (with minimum 65% marks (7.25 CGPA)	IITs, IISc, NITs, central universities, and other selected institutions.
Registration of Students with	Scientist 'C'	Fresh PhD scholars and those who have passed the Post Graduate	Between 01 January and 30

Scholastic Aptitude (ROSSA)		level in the first division in engineering & medical	June is September 30.
Talent Search Scheme for NRIs	Scientists at different levels (Ad-hoc appointment)	<ul style="list-style-type: none"> <li>NRI scientists who would have returned to India during the preceding 6-months' time.</li> <li>Not holding any position in India.</li> <li>Also, such NRIs may be desirous of returning. A higher qualification such as MS or PhD</li> </ul>	The ad-hoc appointment is made for a maximum period of one year and this appointment is normally not extended.
Lateral Entry Scheme	Scientist 'C' & Scientist 'G'	In the case of scientists' relevant work experience & Similar educational qualifications.	To meet the requirement of specialized experience manpower
Fellowships for Aeronautical Research and Development Board	Scientist 'B'	<ul style="list-style-type: none"> <li>BE/ BTech and ME/ MTech Candidates</li> <li>Aeronautical Engineering in the various institutes of national fame</li> </ul>	<ul style="list-style-type: none"> <li>Subject to interview by recruitment and assessment cell (RAC).</li> </ul>

### Scientists Recruitments in other Defense Institutions

<b>JOB OPENINGS IN STRATEGIC AREAS</b>
DEPARTMENT OF ATOMIC ENERGY (Approximately 300 positions)
Position: Scientific Officers
Variable Energy Cyclotron Centre
Nuclear Power Corporation of India Ltd
Heavy Water Board
Bhabha Atomic Research Centre
<b>Position: Engineers/ Operational/ Management Trainee</b>
Institute for Plasma Research
Uranium Corporation of India Limited

<b>Position: Junior Research Fellow (JRF)/ Research Associate (RA)</b>
Bhabha Atomic Research Centre
Indira Gandhi Centre for Atomic Research
Institute of Physics
Harish-Chandra Research Institute
<b>DEPARTMENT OF SPACE (Approximately 400 positions)</b>
<b>Position: Scientists/ Engineers</b>
Vikram Sarabhai Space Centre
Satish Dhawan Space Centre
National Remote Sensing Agency
Graduate Trainee
Liquid Propulsion Systems Centre
<b>Position: Post Doctoral Fellow (PDF)/ Senior Research Fellow (SRF)/ Junior Research Fellow (JRF)/ Research Associate (RA)</b>
National Remote Sensing Agency
Physical Research Laboratory
<b>DEFENCE RESEARCH AND DEVELOPMENT ORGANISATION (Approximately 300 positions)</b>
<b>Position: Scientists/ Engineers</b>
Defense Research and Development Organization

## Salary Comparison Between BARC, ISRO and DRDO

- Fresh scientists are recruited for the position of Scientist-B (SC/B) with pay in pay band whose basic pay or starting pay lies between (15600-39100) with grade pay of 5400/-.
- Fresh engineers & scientists are recruited by BARC for the position of Scientific Officer-C with the same basic and grade pay. BARC gives either two or three increments.

### DRDO Scientist (B) Salary

Salary Component	Amount (₹)
Pay Matrix Level	Level – 10
Basic Pay	56,100 – 1,77,500
DA (Dearness Allowances)	6,732
TA (Transport Allowance)	3,600 – 7,200

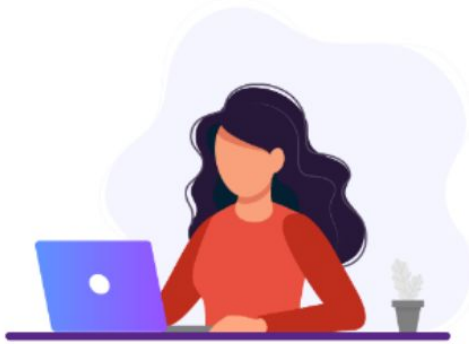
HRA (if applicable)	4,488 – 13,464
Professional update allowance	1,875
<b>Total Gross Salary</b>	<b>68,307 – 85,553</b>

### ISRO Salary

Post	Pay Band
Scientist/ Engineer- SD	INR 15,600 - INR 39,100
Scientist/ Engineer- SE	INR 15,600 - INR 39,100
Scientist/ Engineer- SF	INR 37,400 - INR 67,000
Scientist/ Engineer- SG	INR 37,400 - INR 67,000
Scientist/ Engineer- H	INR 37,400 - INR 67,000
Outstanding Scientist	INR 67,000 -INR 79,000
Distinguished Scientist	INR 75,500 -INR 80,000

### BARC Salary

Designation	Status	Group	Category	Pay in the Pay matrix Minimum - Maximum (₹)
Scientist Officer- F	G	A	SCI	123100-215900
Technical Officer- F	G	A	SCI	123100-215900
Scientist Officer- E	G	A	SCI	78800-209200
Technical Officer- E	G	A	SCI	78800-209200
Scientist Officer- D	G	A	SCI	67700-208700



### Conceptual Clarity



LIVE Classes



Recorded  
Classes



Doubt  
Resolution



### Revision/Test Series



Workbook/Study  
Notes



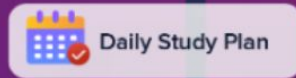
Previous  
Year  
Questions



Test Series

# **BYJU'S** EXAM PREP | **GATE**

The Most **Comprehensive** Exam Prep App



Daily Study Plan

Designed By Experts

