

GATE

General Aptitude

Syllabus



GATE General Aptitude Syllabus

IITs oversees releasing the applicable GATE Aptitude Syllabus. According to the latest GATE Exam Pattern, the GATE General Aptitude section is common for all the papers of the GATE Exams. The brochure, along with the official syllabus, is available on the official website of GATE Exams.

Since it is a critical part of all the papers, accounting for about 15 out of the total 100 marks for each subject, General Aptitude is crucial. Knowing the GATE General Aptitude Syllabus will help the students to prepare more effectively for the GATE exams.

GATE Syllabus for Aptitude

The four main sections included in the GATE GA Syllabus are Verbal Aptitude, Quantitative Aptitude, Analytical Aptitude and Spatial Aptitude. Topics discussed under each section and the sample questions to get an idea about the pattern of the exam are found in the PDF provided below in this article.

[Click to Download GATE General Aptitude \(GA\) Syllabus PDF](#)

Verbal Aptitude	Basic English grammar: tenses, articles, adjectives, prepositions, conjunctions, verb-noun agreement, and other parts of speech Basic vocabulary: words, idioms, and phrases in context Reading and comprehension Narrative sequencing
Quantitative Aptitude	Data interpretation: data graphs (bar graphs, pie charts, and other graphs representing the data), 2- and 3-dimensional plots, maps, and tables Numerical computation and estimation: ratios, percentages, powers, exponents and logarithms, permutations and combinations, and series Mensuration and geometry Elementary statistics and probability
Analytical Aptitude	Logic: deduction and induction, Analogy, Numerical relations and reasoning
Spatial Aptitude	Transformation of shapes: translation, rotation, scaling, mirroring, assembling, and grouping Paper folding, cutting, and patterns in 2 and 3 dimensions

GATE Exam Pattern

The Question Paper of GATE Exams for any subject includes two sections. The compulsory General Aptitude (GA) section in the papers amounts to 10 questions. 5 questions among these 10 carry one mark, and the rest 5 carry two marks each. So, the total marks are 15 for the GA section of a paper.

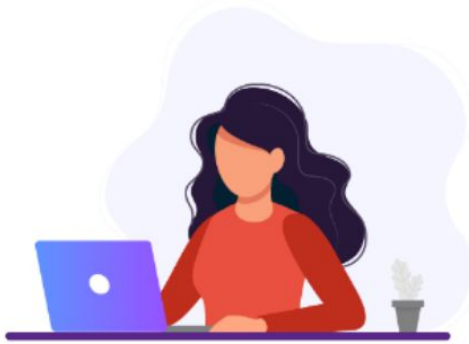
- Exam Mode – Computer Based Test (CBT)
- Duration of the Exam – 3 hours
- Sections – General Aptitude (GA) + Candidate's Selected Subject
- Type of Questions Asked for the Test – (a) Multiple Choice Questions (MCQ).

(b) (i) Multiple Select Questions (MSQ) or (ii) Numerical Answer Type (NAT) Questions

- Total Questions – 65 Questions

Out of these total 65 questions, about 10 are from the General Aptitude Section of the paper. The GA section is typically intended to test the Language and Analytical skills of the candidate.





Conceptual Clarity



LIVE Classes



Recorded
Classes



Doubt
Resolution



Revision/Test Series



Workbook/Study
Notes



Previous
Year
Questions



Test Series

BYJU'S EXAM PREP | **GATE**

The Most **Comprehensive** Exam Prep App



Daily Study Plan

Designed By Experts