

# Customised Study Planner

For All Engineering  
Branches



## Customized Study Planner

# Customized Study Planner Including Topics Prioritization and Time Management

Studying for the GATE (Graduate Aptitude Test in Engineering) can be daunting, but with a well-organized study plan, you can make the most of your time and ensure that you are well-prepared for the exam. Here is a customized study planner for GATE aspirants in the ECE, CE, ME, CSE, and EE branches.

1. Start by familiarizing yourself with the GATE syllabus and exam pattern. Make a list of all the topics included in the syllabus and the weightage assigned to each topic. This will help you prioritize your study plan and allocate your time accordingly.
2. Set a target score for yourself and work backwards to determine how much time you need to devote to each subject. For example, if you want to score 70 out of 100 marks, you need to aim to score an average of 14 marks in each of the five sections.
3. Allocate sufficient time for each subject. Ideally, it would help if you aimed to study for at least six hours daily, with breaks in between. Plan your study schedule in a way that allows you to cover all the subjects within the available time.
4. Once you have prioritized the topics, create a study plan that covers each subject thoroughly. Start with the topics you find most challenging or are weaker in, and allocate more time to these topics.
5. Allocate enough time for revision. Revision is essential to consolidate your learning and improve retention. Revise the topics you have covered regularly, especially the ones you find more challenging.
6. Practice as many past papers and mock tests as you can.

## GATE Prioritization of Topics

Prioritize the topics based on their weightage in the exam. Here is a list of the topics and their weightage for each branch:

### Electronics and Communication Engineering:

- Networks, Signals, and Systems (18-20%)
- Electronic Devices (15-17%)
- Analog Circuits (12-14%)
- Digital Circuits (12-14%)
- Control Systems (8-10%)
- Communications (7-9%)

- Electromagnetics (6-8%)
- Engineering Mathematics (6-8%)

### **Civil Engineering:**

- Strength of Materials (14-18%)
- Environmental Engineering (13-15%)
- Surveying (12-14%)
- Geotechnical Engineering (12-14%)
- Fluid Mechanics (10-12%)
- Transportation Engineering (8-10%)
- Structural Analysis (6-8%)
- Engineering Mathematics (6-8%)

### **Mechanical Engineering:**

- Engineering Mathematics (13-15%)
- Applied Mechanics and Design (12-14%)
- Thermal Sciences (12-14%)
- Materials, Manufacturing, and Industrial Engineering (12-14%)
- Fluid Mechanics and Machinery (10-12%)
- Heat Transfer (7-9%)
- Machine Design (6-8%)
- Renewable Sources of Energy (6-8%)

### **Computer Science Engineering:**

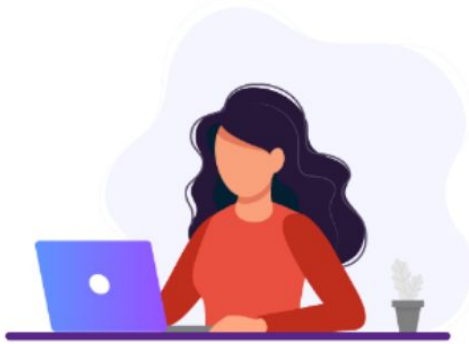
- Algorithms (10-15%)
- Programming and Data Structures (8-12%)
- Computer Networks (7-10%)
- Operating System (6-9%)
- Database (6-9%)
- Computer Organization and Architecture (6-9%)
- Theory of Computation (6-9%)
- Engineering Mathematics (10-15%)

### **Electrical Engineering:**

- Networks, Signals, and Systems (15-17%)
- Electronic Devices and Circuits (14-16%)
- Electromagnetic Fields (10-12%)
- Control Systems (9-11%)
- Power Systems (8-10%)
- Analog and Digital Electronics (8-10%)
- Electrical Machines (6-8%)
- Engineering Mathematics (8-10%)

GATE Timetable for Students:

Time Allotment	GATE Study Time-Table
6:30 a.m.	Candidate needs to Wake-up
7:00 a.m - 7:30 a.m	Light Exercises
7:30 a.m - 8:00 a.m	Take Your Breakfast
8:00 a.m - 11:00 a.m	Studies Time Tough Subject (3 hours)
11:00 a.m - 12:00 noon	Aptitude + Engineering Mathematics (1 hour)
01:00 p.m - 02:00 p.m	Lunch
02:00 p.m - 03:00 p.m.	Afternoon Nap
03:00 p.m - 05:00 p.m.	Study Time Easy Subject (2 hours)
05:00 p.m - 05:30 p.m	Some sports/gym
05:30 p.m - 08:30 p.m	Study time Tough Subject (3 hours)
08:30 p.m - 09:30 p.m	Dinner
09:30 p.m - 10:00 p.m	Fun Time (TV News paper)
10:00 p.m - 12:00 a.m	Study time Tough Subject / Revision (3 hours)
12:30 a.m	Sleep



### Conceptual Clarity



LIVE Classes



Recorded Classes



Doubt Resolution



### Revision/Test Series



Workbook/Study Notes



Previous Year Questions



Test Series

# BYJU'S EXAM PREP | GATE

The Most Comprehensive Exam Prep App

