

IBPS Clerk Prelims 2022 Memory-based Questions (3rd September)

DOWNLOAD PDF



Choose the most appropriate option to change the voice (active/passive) form of the given sentence.

1. Ratan is performing an experiment.
A. An experiment were performed by Ratan.
B. An experiment was performed by Ratan.
C. An experiment is performed by Ratan.
D. An experiment is being performed by Ratan.

Direction: Study the following information and answer the given questions. Eight people i.e., A, B, C, D, E, F, G, and H sit at a square-shaped table. Four people sit at the four corners of the table and face inside the table. Four people sit in the middle of the four sides and face outside the table. All the information is not necessarily in the same order. B sits third to the right of A. Two people sit between B and D. E sits second to the left of D. G sits at the corner of the table. F sits third to the right of G. H sits second to the left of C who does not sit at the corner of the table.

2. Who sits third to the left of B?
A. H
B. C
C. D
D. F

3. Number of people sit between A and C when counted from left of C is same as number of people sit between _____ and B when counted from right of B.
A. F
B. E
C. H
D. G

4. Four of the following five are alike in a certain way and hence form a group. Which of the following does not belong to that group?
A. D
B. A
C. E
D. B

5. What is the position of B with respect to H?
A. Immediate left
B. Second to the left
C. Second to the right
D. Third to the left



Direction: Study the following information and answer the given questions.

A certain number of people are sitting in a straight line facing the north direction. Five people sit between H and D. A sits third to the left of D. Number of people sit between H and A is same as number of people sit between H and B. B sits at one of the ends of the row. Four people sit between B and K. Six people sit between K and G who sits at the extreme end of the row.

6. Who sits between K and D?

- A. Both A and G
- B. Only A
- C. Only G
- D. Both H and B

7. How many people are there in the row?

- A. 13
- B. 12
- C. 8
- D. 16

8. Who sits fifth to the left of K?

- A. B
- B. H
- C. D
- D. A

9. How many people sit to the left of H?

- A. One
- B. Five
- C. Three
- D. Four

Direction: Study the following information and answer the given questions.

There are Eight People i.e., A, B, C, D, E, F, G and H attend an occasion on eight different days but not necessarily in the same order. Only one person attends the occasion between A and H. Three people attend the occasion between H and B. B attends the occasion after H. Two people attend the occasion between B and D. D attends the occasion after B. Two people attend the occasion between C and F. C attends the occasion before E

10. How many people attend the occasion before C?

- A. One



- B. Three
- C. None
- D. Two

11. Who attend the occasion between F and B?

- A. D
- B. E
- C. A
- D. C

12. How many people attend the occasion between G and E?

- A. Three
- B. None
- C. One
- D. Two

13. Who attends the occasion just before F?

- A. B
- B. C
- C. E
- D. A

14. Who attends the occasion at the last?

- A. G
- B. H
- C. D
- D. A

Direction: In the question below are given three statements followed by two conclusions which are numbered as I and II. You have to take the given statements to be true even if they seem to be at variance with commonly known facts. Read all the conclusions and then decide which of the given conclusions logically follows from the given statements disregarding commonly known facts.

15. **Statements:**

All Digits are Letter

Only a few Letters are Word

Only a few Words are Number

Conclusion:

I. No Digit is Word

II. Some Words are not Number

IBPS Clerk Mains 2022
A Practice Batch



- A. Only I follows
- B. Only II follows
- C. Either I or II follows
- D. Neither I nor II follows

Direction: What should come in place of the question mark (?) in the following number series?

16. 33, 47, 75, 117, ?, 243

- A. 166
- B. 173
- C. 158
- D. 188

17. 10, 35, 135, 360, ?, 1385

- A. 540
- B. 760
- C. 880
- D. 1020

18. 3, ?, 18, 38, 78, 158

- A. 8
- B. 6
- C. 9
- D. 5

Direction: What should come in place of the question mark '?' in the following question?

19. $\frac{\sqrt{52 \times 13}}{13} = \frac{80}{?}$

- A. 48
- B. 32
- C. 20
- D. 40

20. $\frac{360}{90} \times 4 + 4 = ? \times 5$

- A. 4
- B. 2
- C. 3
- D. 5



21. The circumference of a semicircle is 36 cm. The breadth of a rectangle is equal to the radius of circle. If the area of the rectangle is 147 cm^2 , find the length of rectangle.

- A. 28 cm
- B. 21 cm
- C. 14 cm
- D. 10.5 cm

22. Two pipes X and Y can fill a tank in 4 hours and 6 hours respectively. Pipes X, Y and Z together can fill the same tank in 3 hours. In how much time pipe Z can empty the half of the same tank?

- A. 8 hours
- B. 10 hours
- C. 6 hours
- D. 9 hours

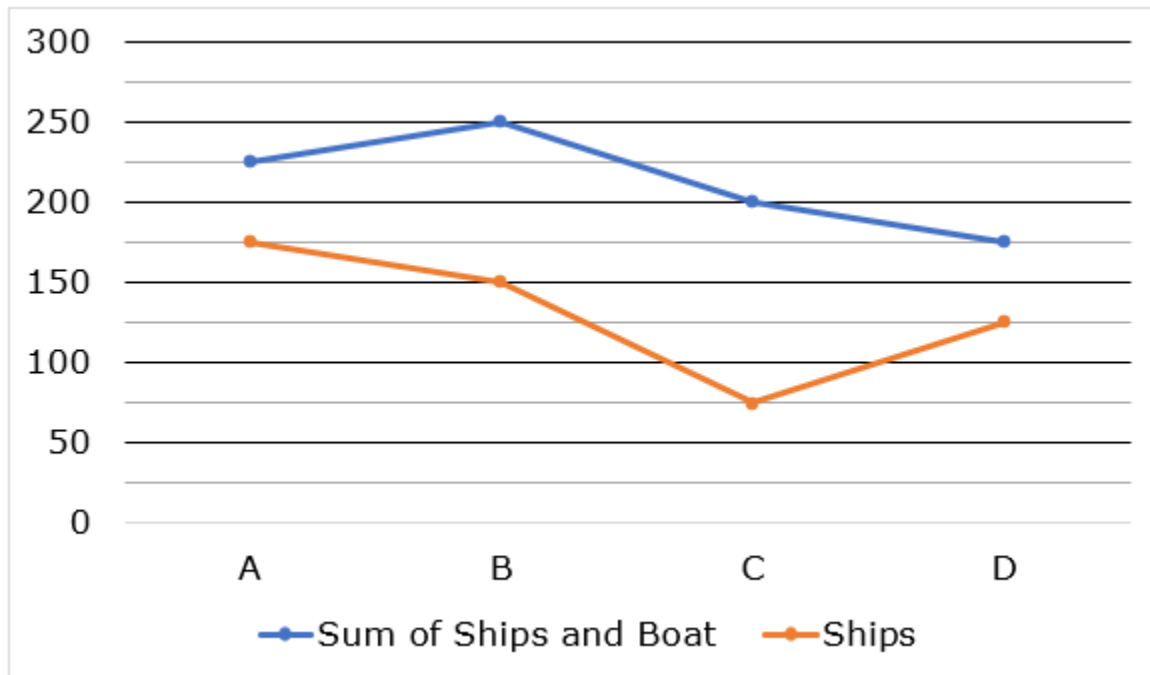
23. The length of train A is half the length of train B. The ratio of speed of train A to that of train B is 2 : 3. If train A and train B cross a platform of 100 m length in 5 seconds and 6 seconds respectively, find the length of train B

- A. 800 m
- B. 720 m
- C. 880 m
- D. 600 m

Direction: Study the following information carefully and answer the given questions.

The given below line graph shows the production of number of ships and the sum of production of ships and boats by four cargo companies-A, B, C and D in 2020





24. Number of boats produced by company B is what percentage of the total number of boats and ships produced by the same company?

- A. 50%
- B. 15%
- C. 40%
- D. 25%

25. What is the average number of boats produced by companies A, C and D?

- A. 75
- B. 57
- C. 64
- D. 81

Direction: Read the sentence to find out whether there is an error in it. The error, if any, will be in one part of the sentence. The number corresponding to that part will be your answer. If the given sentence is correct as it is, mark the answer as 'No error'. Ignore the errors of punctuation, if any

26. The woman's luggage (1)/ will be lost during her flight, (2)/ and no one has seen her (3)/ clothing-stuffed bag since then. (4)

- A. 1
- B. 2
- C. 3

IBPS Clerk Mains 2022
A Practice Batch



D. 4

Direction: Read the sentence to find out whether there is an error in it. The error, if any, will be in one part of the sentence. The number corresponding to that part will be your answer. If the given sentence is correct as it is, mark the answer as 'No error'. Ignore the errors of punctuation, if any

27. It was too dark (1)/ to explore the grounds, (2)/ so the crew were forced (3)/ to return the following day. (4)

- A. 1
- B. 2
- C. 3
- D. 4

Direction: Read the sentence to find out whether there is an error in it. The error, if any, will be in one part of the sentence. The number corresponding to that part will be your answer. If the given sentence is correct as it is, mark the answer as 'No error'. Ignore the errors of punctuation, if any

28. Recurring sinus (1)/ infection plaguing (2)/ the man (3)/ every winter. (4)

- A. 1
- B. 2
- C. 3
- D. 4

Direction: Read the sentence to find out whether there is an error in it. The error, if any, will be in one part of the sentence. The number corresponding to that part will be your answer. If the given sentence is correct as it is, mark the answer as 'No error'. Ignore the errors of punctuation, if any.

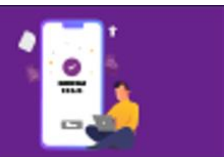
29. While you go to the (1)/ restaurant during happy (2)/ hour, you can enjoy a (3)/ strawberry lemonade at half the cost. (4)

- A. 1
- B. 2
- C. 3
- D. 4

Direction: Read the sentence to find out whether there is an error in it. The error, if any, will be in one part of the sentence. The number corresponding to that part will be your answer. If the given sentence is correct as it is, mark the answer as 'No error'. Ignore the errors of punctuation, if any.

30. During every (1)/ rainy season, periodic (2)/outbreaks of diseases (3)/ kills hundreds of people. (4)

- A. 1



- B. 2
- C. 3
- D. 4

Direction: In the given question, a statement has been divided into five segments, each of which is denoted by (A), (B), (C), (D) and (E). Rearrange all the segments to form a coherent statement.

31.

- A) landed him in dire straits
- B) for the future, which
- C) the young man was foolish
- D) and didn't save any money
- E) when he ran out of cash

- A. CABED
- B. BACED
- C. CDBAE
- D. DEBAC

32.

- A) at the party doing a
- B) a silly clown showed up
- C) of the children so they
- D) comedy routine in front
- E) would be fully entertained

- A. CAEBD
- B. AECAB
- C. DEBAC
- D. BADCE

33.

- A) was a way to
- B) The man's willful silence
- C) intentionally hurt his
- D) wife and avoid talking
- E) out their issues

- A. AEBDC
- B. DBAEC
- C. EBACD
- D. BACDE



Direction: In the following question, a word is given, which has been used in the three statements given below it. Identify the statement(s) in which the word fits contextually to convey a logical meaning.

34.

PORE

- I. He began to **pore** upon religious problems.
- II. I need a funnel to **pore** petrol into the tank.
- III. Cements are the crystals which grow into existing **pore** spaces.

- A. Only I
- B. Only II
- C. Only III
- D. Both I and III

35.**CUE**

- I. Our success was the cue for other companies to press ahead with new investment.
- II. He chalked his billiard cue again and again.
- III. Kevin arrived right on cue to care for Harry.

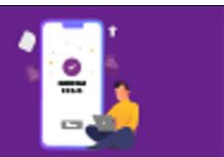
- A. Only I
- B. Only II
- C. Only III
- D. All I, II and III

36.**Turn**

- I. He wanted them to discover the **turns**, valleys, and fells of his beloved Lake District.
- II. The earth **turns** on its axis once every 24 hours.
- III. I waited so long for my **turn** to see the careers adviser that I missed my bus.

- A. Only I
- B. Only II
- C. Only III
- D. Both II and III

Direction: In the following question, a sentence with four words printed in bold is given. These words are numbered as (1), (2), (3) and (4). One of these four words may either be misspelt or inappropriate in the context of the sentence. Find out the word(s) that is wrongly spelt or inappropriate and mark



the relevant option as your answer. If all the words printed in bold are correct, mark option (E), i.e. 'All are correct', as the answer.

37. Herbal **remedies** (1) often **care** (2) illnesses as well, if not **better** (3) than **pharmaceutical** (4) options.

- A. 1
- B. 2
- C. 3
- D. 4

38. The **patient** (1) began to **hemorrhage** (2) when the surgeon **nicked** (3) a **vain** (4) during surgery.

- A. 1
- B. 2
- C. 3
- D. 4

39. After **hearing** (1) her sister's **frantic** (2) voice on the phone, Kim **sensed** (3) that something was **terribly** (4) wrong.

- A. 1
- B. 2
- C. 3
- D. 4

40. Even though **attendees** (1) were **invited** (2) to the candle party, they were under no **obligation** (3) to **purchase** (4) anything.

- A. 1
- B. 2
- C. 3
- D. 4



###ANSWERS###

1. Ans. D.

The given sentence is in active voice. Its tense is present continuous. The structures for active/passive voices are:

Active: Subject + is/are/am + verb (ing) + object...

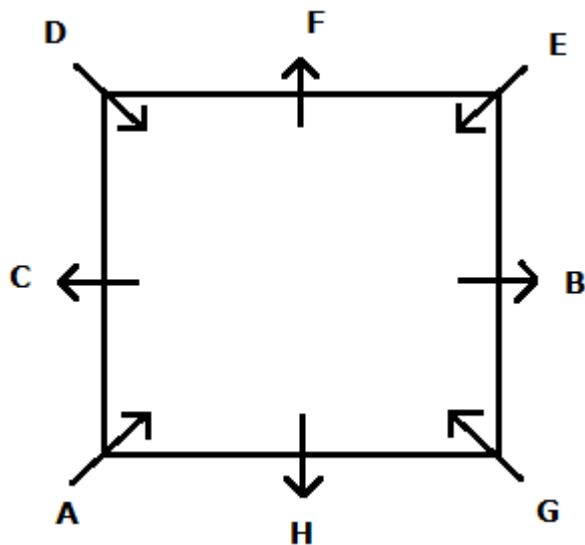
Passive: Object + is/are/am + being + verb (IIIrd form) + by + subject...

So, with the help of the above structures, we can convert the given sentence into passive voice:

An experiment is being performed by Ratan.

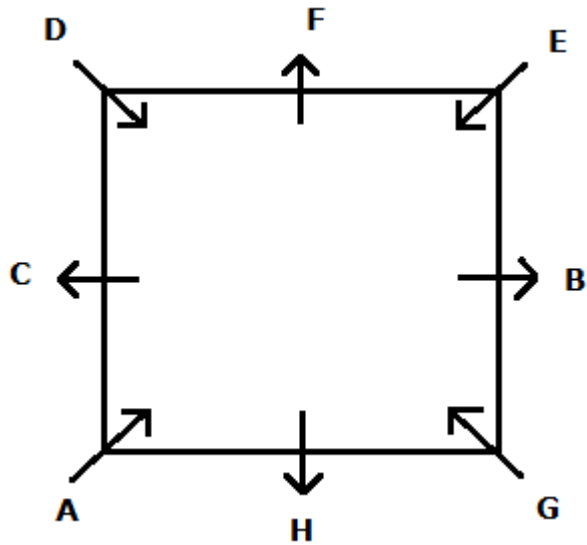
Hence, option D is the correct answer.

2. Ans. C.

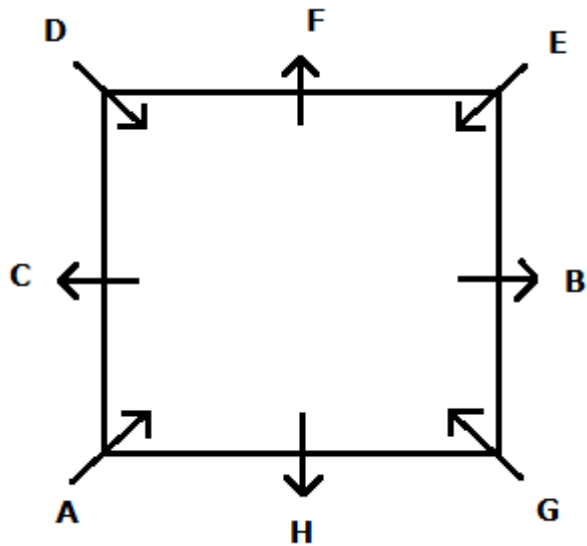


3. Ans. D.



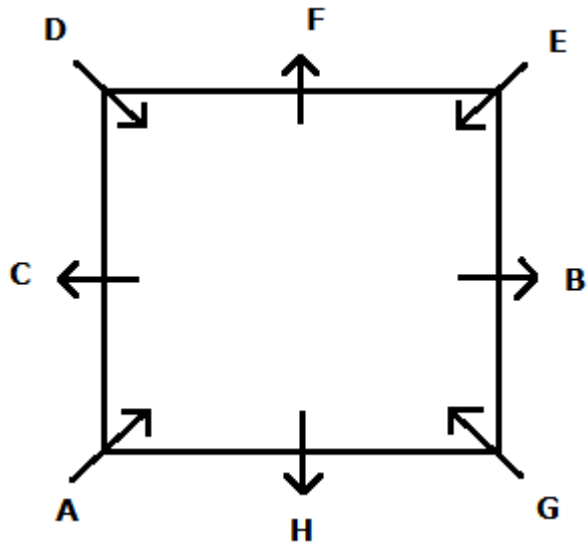


4. Ans. D.

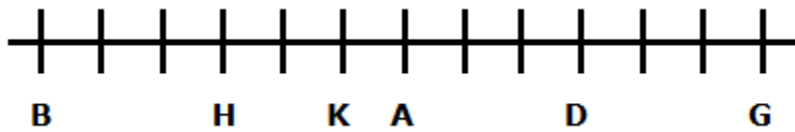


5. Ans. B.

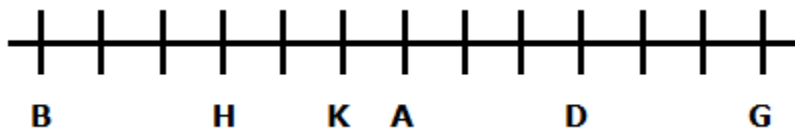




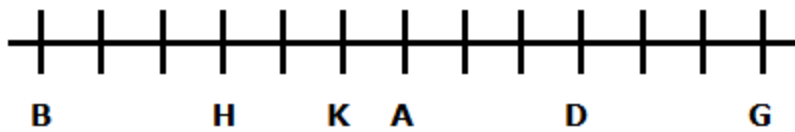
6. Ans. B.



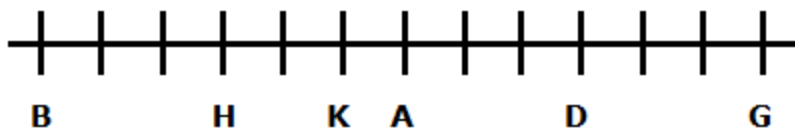
7. Ans. A.



8. Ans. A.



9. Ans. C.



10. Ans. B.



H
G
A
C
B
E
F
D

11. Ans. B.

H
G
A
C
B
E
F
D

12. Ans. A.



H
G
A
C
B
E
F
D

13. Ans. C.

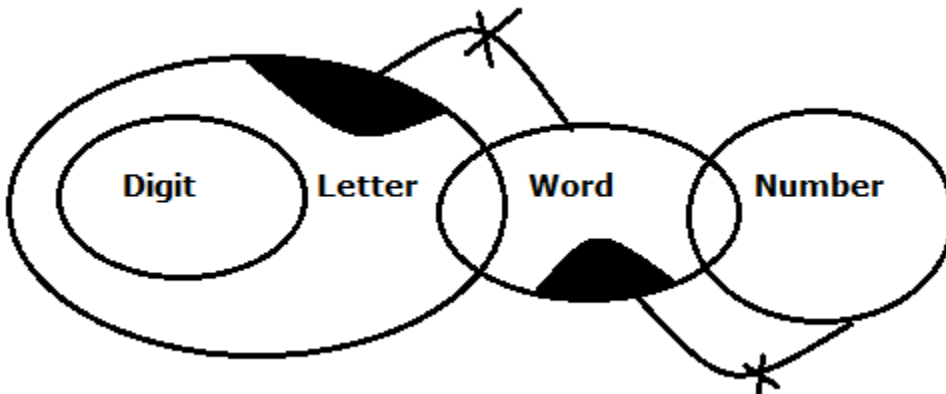
H
G
A
C
B
E
F
D

14. Ans. C.



H
G
A
C
B
E
F
D

15. Ans. B.



16. Ans. B.

The pattern of the series is:

$$33 + 14 = 47$$

$$47 + 28 = 75$$

$$75 + 42 = 117$$

$$117 + 56 = 173$$

$$173 + 70 = 243$$

Hence, the missing number is 173.

17. Ans. B.

The pattern of the series is:

$$10 + 5^2 = 35$$

$$35 + 10^2 = 135$$

IBPS Clerk Mains 2022

A Practice Batch



$$135 + 15^2 = 360$$

$$360 + 20^2 = 760$$

$$760 + 25^2 = 1385$$

Hence, the missing number is 760.

18. Ans. A.

The pattern of the series is:

$$3 \times 2 + 2 = 8$$

$$8 \times 2 + 2 = 18$$

$$18 \times 2 + 2 = 38$$

$$38 \times 2 + 2 = 78$$

$$78 \times 2 + 2 = 158$$

Hence, the missing number is 8.

19. Ans. D.

$$\frac{\sqrt{52 \times 13}}{13} = \frac{80}{?}$$

$$\Rightarrow \frac{\sqrt{13 \times 4 \times 13}}{13} = \frac{80}{?}$$

$$\Rightarrow \frac{13 \times 2}{13} = \frac{80}{?}$$

$$\Rightarrow ? = \frac{80}{2} = 40$$

20. Ans. A.

$$\frac{360}{90} \times 4 + 4 = ? \times 5$$

$$\Rightarrow 16 + 4 = ? \times 5$$

$$\Rightarrow ? = 4$$

21. Ans. B.

$$nr + 2r = 36$$

$$\Rightarrow r(n + 2) = 36$$

$$\Rightarrow r\left(\frac{22}{7} + 2\right) = 36$$

$$\Rightarrow \frac{36}{7}r = 36$$

$$\Rightarrow r = 7$$

Breadth of rectangle = 7 cm

$$\text{Length of rectangle} = \frac{147}{7} = 21 \text{ cm}$$

22. Ans. C.

Let the capacity of tank be 12 units.

$$\text{Efficiency of pipe X} = \frac{12}{4} = 3 \text{ units/hour}$$

IBPS Clerk Mains 2022
A Practice Batch



Efficiency of pipe Y = $\frac{12}{6} = 2$ units/hour

Efficiency of pipes (X + Y + Z) = $\frac{12}{3} = 4$ units/hour

Efficiency of Z = $4 - (3 + 2) = -1$ unit/hour

Half of the capacity of tank = 6 units

Required time = $\frac{6}{1} = 6$ hours

23. Ans. A.

Let the length of train B be 2L meters.

24. Ans. C.

Sum of ships and boats produced by company B = 250

Number of ships produced by company B = 150

Number of boats produced by B = $250 - 150 = 100$

Required percentage = $\frac{100}{250} \times 100 = 40\%$

25. Ans. A.

Total number of boats produced by A, C and D

= $(225 - 175) + (200 - 75) + (175 - 125)$

= $50 + 125 + 50 = 225$

Required average = $\frac{225}{3} = 75$

26. Ans. B.

The used tense is wrong here. Instead of 'will be lost' the sentence demands a simple past tense. We need to replace 'will be lost' with 'was lost' as the instance quoted is of the past.

27. Ans. C.

Note that crew is a collective noun which is singular in form, demanding a singular verb. Thus, we need to replace 'were' with 'was'.

28. Ans. B.

The verb form 'plaguing' is incorrect. As the sentence states a recurring event, the sentence demands a verb in simple present tense. Since the subject is 'Recurring sinus infection' (singular) the verb would also be singular. Thus, we need to replace 'plaguing' with 'plagues'.

29. Ans. A.

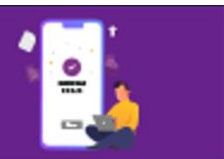
The preposition used in 1st part of the sentence is incorrect. We need to replace 'while' with 'if' to state the condition here, on the basis of which the other gets fulfilled.

30. Ans. D.

The verb form is incorrect as it does not agree with the subject that is plural. Thus, we need to replace kills with kill to rectify the sentence.

31. Ans. C.

IBPS Clerk Mains 2022
A Practice Batch



- C is the only phrase that could possibly mark the beginning of a sentence, since the other options begin with verb 'landed' (it should be used after a subject), preposition 'for', conjunction 'and', & 'when' (that shows a time or condition) which cannot be used to begin a statement as the information provided by the parts are incomplete. This makes D, the first phrase in the sequence, thus eliminating options A, D, and B.

- 'C' and 'D' make a pair as the young man mentioned in part C was foolish and didn't care about the money he had.

- Thus, the sequence of the sentence is **CDBAE**.

So, the sentence would be :- **The young man was foolish and didn't save any money for the future, which landed him in dire straits when he ran out of cash.**

Hence, **option C** is the correct answer.

32. Ans. D.

- B can be the phrase that could possibly mark the beginning of a sentence, since the other options begin with either preposition 'at' or 'of' or modal verb 'would'.

- So, this eliminates options A, C, and E.

- Considering option D, we can say, it can be paired up with C as they both complete the phrase 'in front of' which means in a position just ahead or at the front part of someone or something else.

- Thus, the sequence of the sentence is **BADCE**

So, the sentence would be :- **A silly clown showed up at the party doing a comedy routine in front of the children so they would be fully entertained.**

Hence, **option E** is the correct answer.

33. Ans. D.

- B can be the part that could possibly mark the beginning of a sentence, since the other options begin with auxiliary verb 'was' and 'out'.

- So, this eliminates options A, and E.

- In part B, we have been given the subject of the sentence i.e., 'the man's willful silence' and we need verb after it, which is mentioned in part A.

- Part A ends with preposition 'to', so, the part that has a verb should come after it.

- Thus, the sequence of the sentence is **BACDE**.

So, the sentence would be :- **The man's willful silence was a way to intentionally hurt his wife and avoid talking out their issues.**

Hence, **option D** is the correct answer.

34. Ans. D.

The word has been used correctly in statements I and III. Note that Pore means

IBPS Clerk Mains 2022
A Practice Batch



1 : to gaze intently

2 : to read or study attentively —usually used with over

3 : to reflect or meditate steadily

4 : a minute opening especially in an animal or plant

In statement II, the correct word would be 'pour'.

35. Ans. D.

Note the meanings of the word cue in the given sentences:

I: Cue means a signal for action.

II: a long straight tapering wooden rod for striking the ball in snooker, billiards, etc

III: at the correct moment.

36. Ans. D.

The word has been used correctly in statements II and III.

In sentence I : Tarn should be used in place of turn. Tarn is a small mountain lake in a hollow area surrounded by steep slopes formed by a glacier.

In sentence II : Turn is used as a verb means to (cause to) move in a circle around a fixed point or line.

In sentence III : Turn is used as a noun which means an opportunity or a duty to do something at a particular time or in a particular order, before or after other people.

Hence, **option E** is the correct answer.

37. Ans. B.

The sentence contains a contextual error.

In the given sentence, we are talking about herbal remedies that generally save patients from a disease or illness.

'Care' is the process of protecting someone or something and providing what that person or thing needs. Here, we are not protecting someone or something.

'Cure' means to make someone with an illness healthy again.

We save people by giving a treatment that causes a disease to go away.

Thus, 'cure' should be used in place of 'care'.

Hence, **option B** is the correct answer.

38. Ans. D.

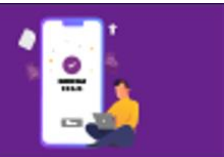
The sentence contains a contextual error.

Vain is an adjective which means unsuccessful; of no value OR too interested in your own appearance or achievements. It is contextually incorrect. Moreover, we require a noun here.

Vein (noun) is a tube that carries blood to the heart from the other parts of the body.

'Nicked' (past form of nick), here, is a verb which means to make a small cut in a surface or an edge.

IBPS Clerk Mains 2022
A Practice Batch



The surgeon will nick a vein during surgery.
Thus, 'vein' should be used in place of 'vain'.
Hence, **option D** is the correct answer.

39. Ans. C.

The sentence contains a contextual error.

'Sensed' is the past simple and past participle of sense. It means to feel or experience something without being able to explain exactly how.

However, 'sensed' is not a correct word.

Here, in the given sentence, the speaker gets extremely worried after hearing her sister's voice as he/she experienced that something was wrong with her sister.

Thus, 'sensed' should be used in place of 'sensed'.

Hence, **option C** is the correct answer.

40. Ans. C.

'Obligation' is an incorrectly spelt word. The correct spelling is 'obligation'.

Obligation means the state of having to do something because it is a law or duty, or because you have promised.

Hence, **option C** is the correct answer.

