

XAT ID	
Candidate Name	
TC Name	

Section : Verbal Ability & Logical Reasoning

Q.1 Read the poem carefully, and answer the following question.

I smiled at you because I thought that you
Were someone else; you smiled back; and there
grew
Between two strangers in a library
Something that seems like love; but you loved
me
(If that's the word) because you thought that I
Was other than I was. And by and by
We found we'd been mistaken all the while
From that first glance, that first mistaken smile

Which of the following **CANNOT** be inferred from the poem?

- Ans A. We make mistakes in love.
- B. We fall in love with strangers.
- C. Love may start with small acts like glancing and smiling.
- D. The idea of love is different for the parties involved.
- E. We don't fall in love with others but with ourselves.

Question ID : 6302611304
Status : Answered
Chosen Option : E

Q.2 Which of the following sentences are grammatically **CORRECT** ?

1. Have you any clothes to dispose of?
2. I saw a pleasant dream last night.
3. I have done it many a times safely.
4. Students struggle to cope up with academic pressure.
5. You need not give negative feedback to your employees.
6. My friend is good at playing football.

- Ans A. 3,4,5
- B. 1,5,6
- C. 4,5,6
- D. 2,3,4
- E. 1,2,3

Question ID : 6302611301
Status : Answered
Chosen Option : E

Q.3 Carefully read the following statement:

When I ask people to name three recently implemented technologies that most impact our world today, they usually propose the computers, the Internet and the laser. All three were unplanned, _____, and _____ upon their discovery and remained _____ well after their initial use.

Which of the following options will BEST fill up the above blanks meaningfully?

- Ans
- A. Astonishing, Superb, Superb
 - B. Surprising, Fulfilling, Unfulfilling
 - C. Unpredicted, Unappreciated, Unappreciated
 - D. Amazing, Shocking, Shocking
 - E. Astonishing, Amazing, Amazing

Question ID : 6302611300
Status : Answered
Chosen Option : C

Q.4 Carefully read the following statement:

The moment we no longer have a free press, anything can happen. What makes it _____ for a totalitarian or any other dictatorship to rule is that _____ are not informed; how can you have an opinion if you are not informed? If everybody always lies to you, the _____ is not that you believe the lies, but rather that nobody believes anything any longer. This is because lies, by their very nature, have to be changed, and a lying government has _____ to rewrite its own history.

Which of the following options will BEST fill up the above blanks meaningfully?

- Ans
- A. Unpleasant, plebeians, fact, forced
 - B. Absurd, subjects, beauty, no reason
 - C. Necessary, citizens, joy, unusually
 - D. Possible, people, consequence, constantly
 - E. Unique, senators, reason, enough

Question ID : 6302611299
Status : Answered
Chosen Option : B

Q.5 Read the passage carefully and answer the following question.

Geologists have been investigating a potential cycle in geological events for a long time. Back in the 1920s and 30s, scientists of the era had suggested that the geological record had a 30-million-year cycle, while in the 1980s and 90s researchers used the best-dated geological events at the time to give them a range of the length between 'pulses' of 26.2 to 30.6 million years. Now, everything seems to be in order – 27.5 million years is right about where we'd expect. A study late last year suggested that this 27.5-million-year mark is when mass extinctions happen, too.

Which of the following statements can be BEST concluded from the passage?

- Ans
- A. Geological disasters happen sporadically
 - B. Not all species go extinct once every 27.5 million years
 - C. Mass extinctions and "geological pulse" are correlated
 - D. "Pulse" between geological events is constant
 - E. All species go extinct once every 27.5 million years

Question ID : 6302611303
Status : Answered
Chosen Option : C

Q.6 Which of the following sentences have INCORRECT usage of preposition?

1. The manager was sitting at the desk.
2. My work is superior to yours.
3. I prefer coffee than tea.
4. She was accused for stealing gold.
5. This is an exception to the rule.
6. They are leaving to England soon.

Ans A. 1,2,3

B. 2,3,4

C. 3,4,6

D. 3,4,5

E. 1,3,6

Question ID : 6302611302

Status : Answered

Chosen Option : C

Comprehension:

Read the poem carefully, and answer the TWO questions that follow.

It hurts to walk on new legs:
The curse of consonants. The wobble of vowels.

And you for whom I gave up a kingdom
Can never love that thing I was.

When you look into my past
You see
Only weeds and scales.

Once I had a voice.
Now I have legs.

Sometimes I wonder
Was it a fair trade?

SubQuestion No : 7

Q.7 Which of the following statements BEST reflects the theme of the poem?

Ans A. Our quest for love is accompanied with pain.

B. Nostalgic recollection undermines materialistic gains.

C. Our loss of identity is irreparable.

D. As the future unfolds, our distant past looks pleasant.

E. Our concern for loss is more than what we gain.

Question ID : 6302611312

Status : Answered

Chosen Option : B

Comprehension:

Read the poem carefully, and answer the TWO questions that follow.

It hurts to walk on new legs:
The curse of consonants. The wobble of vowels.

And you for whom I gave up a kingdom
Can never love that thing I was.

When you look into my past
You see
Only weeds and scales.

Once I had a voice.
Now I have legs.

Sometimes I wonder
Was it a fair trade?

SubQuestion No : 8

Q.8 What does the author BEST mean by “Once I had a voice. /Now I have legs?”

- Ans A. The poet puts less value on the new world
- B. The poet is contemplative of his/her identity
- C. The poet's actions speak louder than his/her words now
- D. The poet is indecisive about choosing between the two worlds
- E. The poet has lost his/her speech

Question ID : 6302611313

Status : Answered

Chosen Option : B

Q.9 Arrange the following sentences in a LOGICAL sequence:

1. In America, primary-age pupils are on average five months behind where they would usually be in maths, and four months in reading, according to McKinsey, a consultancy.
2. As a new school year gets under way in many countries, the harm caused by months of closure is becoming ever clearer.
3. The crisis will accelerate that trend.
4. The damage is almost certainly worse in places such as India and Mexico, where the disruption to schooling has been greater.
5. Even before pandemic, parents around the world were growing more willing to pay for extra lessons in the hope of boosting their children's education.

- Ans A. 3,5,2,4,1
- B. 2,1,4,5,3
- C. 5,1,3,2,4
- D. 5,3,2,1,4
- E. 2,3,1,4,5

Question ID : 6302611305

Status : Answered

Chosen Option : B

Comprehension:

Read the passage carefully and answer the THREE questions that follow.

What does a good life look like to you? For some, the phrase may conjure up images of a close-knit family, a steady job, and a Victorian house at the end of a street arched with oak trees. Others may focus on the goal of making a difference in the world, whether by working as a nurse or teacher, volunteering, or pouring their energy into environmental activism. According to Aristotlean theory, the first kind of life would be classified as "hedonic"—one based on pleasure, comfort, stability, and strong social relationships. The second is "eudaimonic," primarily concerned with the sense of purpose and fulfillment one gets by contributing to the greater good. The ancient Greek philosopher outlined these ideas in his treatise *Nicomachean Ethics*, and the psychological sciences have pretty much stuck them ever since when discussing the possibilities of what people might want out of their time on Earth. But a new paper, published in the American Psychological Association's *Psychological Review*, suggests there's another way to live a good life. It isn't focused on happiness or purpose, but rather it's a life that's "psychologically rich."

What is a psychologically rich life? According to authors Shige Oishi, a professor of psychology at the University of Virginia, and Erin Westgate, an assistant professor of psychology at the University of Florida, it's one characterized by "interesting experiences in which novelty and/or complexity are accompanied by profound changes in perspective."

Studying abroad, for example, is one way that college students often introduce psychological richness into their lives. As they learn more about a new country's customs and history, they're often prompted to reconsider the social mores of their own cultures. Deciding to embark on a difficult new career path or immersing one's self in avant-garde art (the paper gives a specific shout-out to James Joyce's *Ulysses*) also could make a person feel as if their life is more psychologically rich.

Crucially, an experience doesn't have to be fun in order to qualify as psychologically enriching. It might even be a hardship. Living through war or a natural disaster might make it hard to feel as though you're living a particularly happy or purposeful life, but you can still come out of the experience with psychological richness. Or you might encounter less dramatic but nonetheless painful events: infertility, chronic illness, unemployment. Regardless of the specifics, you may experience suffering but still find value in how your experience shapes your understanding of yourself and the world around you.

SubQuestion No : 10

Q.10 Which of the following statements BEST contrasts Hedonic from Eudaimonic?

- Ans A. Hedonic believes in seeking pleasure while Eudaimonic focuses on depriving oneself of pleasure
- B. Hedonic focuses on what gives pleasure to self, while Eudaimonic focuses on what he/she believes benefits the society
- C. Hedonic focuses on the emptiness from seeking pleasure, while Eudaimonic focuses on the fulfillment by giving pleasure to others
- D. Hedonic believes that pleasure leads to fulfillment while Eudaimonic believes that fulfillment leads to pleasure
- E. Hedonic focuses on pleasure to self while Eudaimonic focuses on pleasure to the other

Question ID : 6302611319

Status : Answered

Chosen Option : B

Comprehension:

Read the passage carefully and answer the THREE questions that follow.

What does a good life look like to you? For some, the phrase may conjure up images of a close-knit family, a steady job, and a Victorian house at the end of a street arched with oak trees. Others may focus on the goal of making a difference in the world, whether by working as a nurse or teacher, volunteering, or pouring their energy into environmental activism. According to Aristotlean theory, the first kind of life would be classified as "hedonic"—one based on pleasure, comfort, stability, and strong social relationships. The second is "eudaimonic," primarily concerned with the sense of purpose and fulfillment one gets by contributing to the greater good. The ancient Greek philosopher outlined these ideas in his treatise *Nicomachean Ethics*, and the psychological sciences have pretty much stuck them ever since when discussing the possibilities of what people might want out of their time on Earth. But a new paper, published in the American Psychological Association's *Psychological Review*, suggests there's another way to live a good life. It isn't focused on happiness or purpose, but rather it's a life that's "psychologically rich."

What is a psychologically rich life? According to authors Shige Oishi, a professor of psychology at the University of Virginia, and Erin Westgate, an assistant professor of psychology at the University of Florida, it's one characterized by "interesting experiences in which novelty and/or complexity are accompanied by profound changes in perspective."

Studying abroad, for example, is one way that college students often introduce psychological richness into their lives. As they learn more about a new country's customs and history, they're often prompted to reconsider the social mores of their own cultures. Deciding to embark on a difficult new career path or immersing one's self in avant-garde art (the paper gives a specific shout-out to James Joyce's *Ulysses*) also could make a person feel as if their life is more psychologically rich.

Crucially, an experience doesn't have to be fun in order to qualify as psychologically enriching. It might even be a hardship. Living through war or a natural disaster might make it hard to feel as though you're living a particularly happy or purposeful life, but you can still come out of the experience with psychological richness. Or you might encounter less dramatic but nonetheless painful events: infertility, chronic illness, unemployment. Regardless of the specifics, you may experience suffering but still find value in how your experience shapes your understanding of yourself and the world around you.

SubQuestion No : 11

Q.11 Which of the following statements BEST defines a "psychologically rich life"?

- Ans A. A life that offers interesting experiences that makes you question what life is
- B. A life where novel experiences result in a fundamental change to our existing views
- C. A life that is filled with learning opportunities that makes us an expert in a particular area
- D. A life that is filled with novel experiences which changes our view of what a good life is
- E. Any novel experience that affects us cognitively makes us psychologically rich

Question ID : 6302611320

Status : Answered

Chosen Option : B

Comprehension:

Read the passage carefully and answer the THREE questions that follow.

What does a good life look like to you? For some, the phrase may conjure up images of a close-knit family, a steady job, and a Victorian house at the end of a street arched with oak trees. Others may focus on the goal of making a difference in the world, whether by working as a nurse or teacher, volunteering, or pouring their energy into environmental activism. According to Aristotlean theory, the first kind of life would be classified as "hedonic"—one based on pleasure, comfort, stability, and strong social relationships. The second is "eudaimonic," primarily concerned with the sense of purpose and fulfillment one gets by contributing to the greater good. The ancient Greek philosopher outlined these ideas in his treatise *Nicomachean Ethics*, and the psychological sciences have pretty much stuck them ever since when discussing the possibilities of what people might want out of their time on Earth. But a new paper, published in the American Psychological Association's *Psychological Review*, suggests there's another way to live a good life. It isn't focused on happiness or purpose, but rather it's a life that's "psychologically rich."

What is a psychologically rich life? According to authors Shige Oishi, a professor of psychology at the University of Virginia, and Erin Westgate, an assistant professor of psychology at the University of Florida, it's one characterized by "interesting experiences in which novelty and/or complexity are accompanied by profound changes in perspective."

Studying abroad, for example, is one way that college students often introduce psychological richness into their lives. As they learn more about a new country's customs and history, they're often prompted to reconsider the social mores of their own cultures. Deciding to embark on a difficult new career path or immersing one's self in avant-garde art (the paper gives a specific shout-out to James Joyce's *Ulysses*) also could make a person feel as if their life is more psychologically rich.

Crucially, an experience doesn't have to be fun in order to qualify as psychologically enriching. It might even be a hardship. Living through war or a natural disaster might make it hard to feel as though you're living a particularly happy or purposeful life, but you can still come out of the experience with psychological richness. Or you might encounter less dramatic but nonetheless painful events: infertility, chronic illness, unemployment. Regardless of the specifics, you may experience suffering but still find value in how your experience shapes your understanding of yourself and the world around you.

SubQuestion No : 12

Q.12 Which of the following statements can be BEST concluded from the passage?

- Ans A. A bad experience can enrich someone psychologically.
- B. An unpleasant experience can enable a good life.
- C. Life need not be good, but can still be psychologically rich.
- D. A psychologically rich life is a good life.
- E. A good life should not be seen in binary terms.

Question ID : 6302611321

Status : Answered

Chosen Option : C

Q.13 Read the excerpt carefully and answer the following question.

The over-whelming preponderance of people have not freely decided what to believe, but, rather, have been socially conditioned (indoctrinated) into their beliefs. They are unreflective thinkers.

Which of the following statements CANNOT be concluded from the excerpt?

- Ans A. Things that we do automatically need to be reflected upon
- B. A lot of people end up believing what they passionately oppose
- C. Beliefs that appear normal and natural heighten their acceptance
- D. A normal thinker finds it difficult to recognize what is happening to them
- E. The inability to criticize one's belief leads to indoctrination

Question ID : 6302611310

Status : Answered

Chosen Option : B

Q.14 Read the passage carefully and answer the following question.

One theory of accidents is what experts call the Swiss Cheese model. A slab of Swiss cheese has several holes, randomly and unevenly distributed over its surface. If several slabs are stacked together, it would be impossible for something to slip through unless all the holes happen to line up. If even one slab doesn't align, the impending catastrophe will meet a layer of resistance, and the worst is averted. Aviation professionals will tell you that plane crashes never happen for a single reason. There may be an identifiable primary factor, but it's usually a chain of events, an array of circumstances neatly piling up.

Which of the following statements can be BEST concluded from the passage?

- Ans A. Averting catastrophe is actually easier than it seems
- B. A catastrophe can be averted if the preceding array of events meets resistance
- C. Any disaster is a culmination of many events happening in a particular order
- D. Accidents cannot be averted since a chain of events have to be averted to avert accidents
- E. Any historically relevant event is an accident because it involves a chain of preceding events

Question ID : 6302611308

Status : Answered

Chosen Option : B

Comprehension:

Read the passage carefully and answer the THREE questions that follow.

What bullshit essentially misrepresents is neither the state of affairs to which it refers nor the beliefs of the speaker concerning that state of affairs. Those are what lies misrepresent, by virtue of being false. Since bullshit need not be false, it differs from lies in its misrepresentational intent. The bullshitter may not deceive us, or even intend to do so, either about the facts or about what he takes the facts to be. What he does necessarily attempt to deceive us about is his enterprise. His only indispensably distinctive characteristic is that in a certain way he misrepresents what he is up to. This is the crux of the distinction between him and the liar. Both he and the liar represent themselves falsely as endeavoring to communicate the truth. The success of each depends upon deceiving us about that. But the fact about himself that the liar hides is that he is attempting to lead us away from a correct apprehension of reality; we are not to know that he wants us to believe something he supposes to be false. The fact about himself that the bullshitter hides, on the other hand, is that the truth-values of his statements are of no central interest to him; what we are not to understand is that his intention is neither to report the truth nor to conceal it. This does not mean that his speech is anarchically impulsive, but that the motive guiding and controlling it is unconcerned with how the things about which he speaks truly are. It is impossible for someone to lie unless he thinks he knows the truth. Producing bullshit requires no such conviction. A person who lies is thereby responding to the truth, and he is to that extent respectful of it. When an honest man speaks, he says only what he believes to be true; and for the liar, it is correspondingly indispensable that he considers his statements to be false.

SubQuestion No : 15

Q.15 Which of the following statements can be BEST inferred from the passage?

- Ans A. Both the liar and the bullshitter misrepresent the truth
- B. Both the liar and the bullshitter are guided by the truth
- C. Both the liar and the bullshitter are not bound by any conviction
- D. Both the liar and the bullshitter live in their own worlds of realities
- E. Both the liar and the bullshitter intend to deceive in their own ways

Question ID : 6302611315

Status : Answered

Chosen Option : D

Comprehension:

Read the passage carefully and answer the THREE questions that follow.

What bullshit essentially misrepresents is neither the state of affairs to which it refers nor the beliefs of the speaker concerning that state of affairs. Those are what lies misrepresent, by virtue of being false. Since bullshit need not be false, it differs from lies in its misrepresentational intent. The bullshitter may not deceive us, or even intend to do so, either about the facts or about what he takes the facts to be. What he does necessarily attempt to deceive us about is his enterprise. His only indispensably distinctive characteristic is that in a certain way he misrepresents what he is up to. This is the crux of the distinction between him and the liar. Both he and the liar represent themselves falsely as endeavoring to communicate the truth. The success of each depends upon deceiving us about that. But the fact about himself that the liar hides is that he is attempting to lead us away from a correct apprehension of reality; we are not to know that he wants us to believe something he supposes to be false. The fact about himself that the bullshitter hides, on the other hand, is that the truth-values of his statements are of no central interest to him; what we are not to understand is that his intention is neither to report the truth nor to conceal it. This does not mean that his speech is anarchically impulsive, but that the motive guiding and controlling it is unconcerned with how the things about which he speaks truly are. It is impossible for someone to lie unless he thinks he knows the truth. Producing bullshit requires no such conviction. A person who lies is thereby responding to the truth, and he is to that extent respectful of it. When an honest man speaks, he says only what he believes to be true; and for the liar, it is correspondingly indispensable that he considers his statements to be false.

SubQuestion No : 16

Q.16 Why does the author say that the bullshitter's intention "is neither to report the truth nor to conceal it?"

- Ans**
- A. Because bullshitters are not convinced about the truth
 - B. Because bullshitters know the truth
 - C. Because bullshitters do not find the truth useful
 - D. Because bullshitters do not like to deceive
 - E. Because bullshitters are respectful to the truth

Question ID : 6302611316

Status : Answered

Chosen Option : A

Comprehension:

Read the passage carefully and answer the THREE questions that follow.

What bullshit essentially misrepresents is neither the state of affairs to which it refers nor the beliefs of the speaker concerning that state of affairs. Those are what lies misrepresent, by virtue of being false. Since bullshit need not be false, it differs from lies in its misrepresentational intent. The bullshitter may not deceive us, or even intend to do so, either about the facts or about what he takes the facts to be. What he does necessarily attempt to deceive us about is his enterprise. His only indispensably distinctive characteristic is that in a certain way he misrepresents what he is up to. This is the crux of the distinction between him and the liar. Both he and the liar represent themselves falsely as endeavoring to communicate the truth. The success of each depends upon deceiving us about that. But the fact about himself that the liar hides is that he is attempting to lead us away from a correct apprehension of reality; we are not to know that he wants us to believe something he supposes to be false. The fact about himself that the bullshitter hides, on the other hand, is that the truth-values of his statements are of no central interest to him; what we are not to understand is that his intention is neither to report the truth nor to conceal it. This does not mean that his speech is anarchically impulsive, but that the motive guiding and controlling it is unconcerned with how the things about which he speaks truly are. It is impossible for someone to lie unless he thinks he knows the truth. Producing bullshit requires no such conviction. A person who lies is thereby responding to the truth, and he is to that extent respectful of it. When an honest man speaks, he says only what he believes to be true; and for the liar, it is correspondingly indispensable that he considers his statements to be false.

SubQuestion No : 17

Q.17 When will a liar BEST turn into a bullshitter?

- Ans A. When a liar stops worrying about the correct comprehension of reality
- B. When a liar stops misrepresenting the state of affairs
- C. When a liar focusses only on the outcome and not on telling lies
- D. When a liar stops responding to the truth
- E. When a liar lies to people about his intention

Question ID : 6302611317

Status : Answered

Chosen Option : A

Q.18 Which of the following conditional sentences are grammatically INCORRECT?

1. If Sandhya had started from the hotel on time, she would have not missed the flight.
2. The students wouldn't have completed their assignment even if the professor would have been there.
3. I had travelled across Europe if I weren't afraid of airplane crashes.
4. Saurav won't join music classes unless his father will ask him.
5. Should you wish to join the party, you must let me know by this evening.
6. We would be stupid if we shared our strategy with her.

- Ans A. 1,2,3
- B. 2,3,4
- C. 3,4,5
- D. 4,5,6
- E. 1,5,6

Question ID : 6302611307

Status : Answered

Chosen Option : C

Comprehension:

Read the passage carefully and answer the THREE questions that follow.

What Arendt does for us is to remind us that our “publicness” is as important to our flourishing as our sociability and our privacy. She draws a distinction between what it means to act “socially” and what it means to act “politically.” The social realm for Arendt is both the context where all our basic survival needs “are permitted to appear in public” and also the realm of “behaviour.” One of the things she fears about modern societies is that society – focused on how we behave and what we will permit for ourselves and others – becomes the realm of *conformism*. This is worrying not just because we don’t really get vibrant societies out of conformism and sameness, but also, Arendt says because there is a risk that we think this is all there is to our living together. We lose ourselves in the tasks of managing behaviour and forget that our true public task is to act, and to distinguish ourselves in doing so. The risk, says Arendt, is therefore that we confuse *behaviour* with *action*, that in modern liberal societies “behaviour replaces action as the foremost mode of human relationship.” This confusion can happen in any area of our modern lives and institutions, secular or faith-based. None is immune.

Arendt wants to drive home the point that the healthy public life requires that we do not just see ourselves as social actors but also as fully public persons, committed to judging and acting as members of a common world we want to inhabit and pass on. Arendt tells us that public action is action in which we stand out, are individuated, become in some way excellent in a manner that is of service to others and a greater good. This is the space where we take risks, subject our common life to scrutiny, seek justice (that sometimes requires us to transgress what seem like accepted laws) in order to be increasingly open to the claims and needs of other humans – ones who are not our household and our kin.

SubQuestion No : 19

Q.19 According to the passage, who can be BEST categorised as a “public person”?

- Ans** A. A wildlife photographer who highlighted the plight of poverty-stricken migrants by posting their pictures.
- B. An online fraud victim who ran a campaign against online fraudsters.
- C. An NGO employee who was tasked to lead a campaign against tribal land acquisition.
- D. A parent who organized protests against the random fee hike by a local school.
- E. A local politician who filed RTI applications to unearth financial scams by a village panchayat.

Question ID : 6302611327

Status : Answered

Chosen Option : C

Comprehension:

Read the passage carefully and answer the THREE questions that follow.

What Arendt does for us is to remind us that our “publicness” is as important to our flourishing as our sociability and our privacy. She draws a distinction between what it means to act “socially” and what it means to act “politically.” The social realm for Arendt is both the context where all our basic survival needs “are permitted to appear in public” and also the realm of “behaviour.” One of the things she fears about modern societies is that society – focused on how we behave and what we will permit for ourselves and others – becomes the realm of *conformism*. This is worrying not just because we don’t really get vibrant societies out of conformism and sameness, but also, Arendt says because there is a risk that we think this is all there is to our living together. We lose ourselves in the tasks of managing behaviour and forget that our true public task is to act, and to distinguish ourselves in doing so. The risk, says Arendt, is therefore that we confuse *behaviour* with *action*, that in modern liberal societies “behaviour replaces action as the foremost mode of human relationship.” This confusion can happen in any area of our modern lives and institutions, secular or faith-based. None is immune.

Arendt wants to drive home the point that the healthy public life requires that we do not just see ourselves as social actors but also as fully public persons, committed to judging and acting as members of a common world we want to inhabit and pass on. Arendt tells us that public action is action in which we stand out, are individuated, become in some way excellent in a manner that is of service to others and a greater good. This is the space where we take risks, subject our common life to scrutiny, seek justice (that sometimes requires us to transgress what seem like accepted laws) in order to be increasingly open to the claims and needs of other humans – ones who are not our household and our kin.

SubQuestion No : 20

Q.20 Based on the passage, which of the following options BEST describes “public action”?

- Ans**
- A. Acting based on our core beliefs while being mindful of what society thinks
 - B. Acting for a just cause regardless of what society thinks about it
 - C. Acting in a way that is perceived to be anti-social
 - D. Acting based on our conviction regardless of what society thinks
 - E. Acting in a way that is seen as acceptable to the society

Question ID : **6302611328**

Status : **Answered**

Chosen Option : **B**

Comprehension:

Read the passage carefully and answer the THREE questions that follow.

What Arendt does for us is to remind us that our “publicness” is as important to our flourishing as our sociability and our privacy. She draws a distinction between what it means to act “socially” and what it means to act “politically.” The social realm for Arendt is both the context where all our basic survival needs “are permitted to appear in public” and also the realm of “behaviour.” One of the things she fears about modern societies is that society – focused on how we behave and what we will permit for ourselves and others – becomes the realm of *conformism*. This is worrying not just because we don’t really get vibrant societies out of conformism and sameness, but also, Arendt says because there is a risk that we think this is all there is to our living together. We lose ourselves in the tasks of managing behaviour and forget that our true public task is to act, and to distinguish ourselves in doing so. The risk, says Arendt, is therefore that we confuse *behaviour* with *action*, that in modern liberal societies “behaviour replaces action as the foremost mode of human relationship.” This confusion can happen in any area of our modern lives and institutions, secular or faith-based. None is immune.

Arendt wants to drive home the point that the healthy public life requires that we do not just see ourselves as social actors but also as fully public persons, committed to judging and acting as members of a common world we want to inhabit and pass on. Arendt tells us that public action is action in which we stand out, are individuated, become in some way excellent in a manner that is of service to others and a greater good. This is the space where we take risks, subject our common life to scrutiny, seek justice (that sometimes requires us to transgress what seem like accepted laws) in order to be increasingly open to the claims and needs of other humans – ones who are not our household and our kin.

SubQuestion No : 21

Q.21 Which of the following is the BEST reason for focusing on behaviour instead of acting in public?

- Ans**
- A. Our focus is to survive and not to flourish
 - B. The foundation of any vibrant society is based on cooperation and not confrontation
 - C. We are dependent on each other, leading to focus on what is accepted by others
 - D. Our fear of being called out on our imperfect thoughts leads us to behave
 - E. To survive is not to distinguish ourselves from others

Question ID : 6302611329

Status : Answered

Chosen Option : D

Comprehension:

Read the passage carefully and answer the THREE questions that follow.

Stupidity is a very specific cognitive failing. Crudely put, it occurs when you don't have the right conceptual tools for the job. The result is an inability to make sense of what is happening and a resulting tendency to force phenomena into crude, distorting pigeonholes.

This is easiest to introduce with a tragic case. British high command during the First World War frequently understood trench warfare using concepts and strategies from the cavalry battles of their youth. As one of Field Marshal Douglas Haig's subordinates later remarked, they thought of the trenches as 'mobile operations at the halt': i.e., as fluid battle lines with the simple caveat that nothing in fact budged for years. Unsurprisingly, this did not serve them well in formulating a strategy: they were hampered, beyond the shortage of material resources, by a kind of 'conceptual obsolescence', a failure to update their cognitive tools to fit the task in hand. In at least some cases, intelligence actively abets stupidity by allowing pernicious rationalisation.

Stupidity will often arise in cases like this, when an outdated conceptual framework is forced into service, mangling the user's grip on some new phenomenon. It is important to distinguish this from mere error. We make mistakes for all kinds of reasons. Stupidity is rather one specific and stubborn cause of error. Historically, philosophers have worried a great deal about the irrationality of not taking the available means to achieve goals: Tom wants to get fit, yet his running shoes are quietly gathering dust. The stock solution to Tom's quandary is simple willpower. Stupidity is very different from this. It is rather a lack of the necessary means, a lack of the necessary intellectual equipment. Combatting it will typically require not brute willpower but the construction of a new way of seeing our self and our world. Such stupidity is perfectly compatible with intelligence: Haig was by any standard a smart man.

SubQuestion No : 22

Q.22 Which of the following statements BEST summarizes the author's view on stupidity?

- Ans A. Comprehending a problem by applying our existing world view is stupidity
- B. The inability to avoid forcing our current views on a new situation is stupidity
- C. Pushing our extant solution to fix an alien problem is stupidity
- D. The novelty of the problem, in relation to our cognitive capacity, is the cause of stupidity
- E. The inability to comprehend what is happening around us is stupidity

Question ID : 6302611323

Status : Answered

Chosen Option : C

Comprehension:

Read the passage carefully and answer the THREE questions that follow.

Stupidity is a very specific cognitive failing. Crudely put, it occurs when you don't have the right conceptual tools for the job. The result is an inability to make sense of what is happening and a resulting tendency to force phenomena into crude, distorting pigeonholes.

This is easiest to introduce with a tragic case. British high command during the First World War frequently understood trench warfare using concepts and strategies from the cavalry battles of their youth. As one of Field Marshal Douglas Haig's subordinates later remarked, they thought of the trenches as 'mobile operations at the halt': i.e., as fluid battle lines with the simple caveat that nothing in fact budged for years. Unsurprisingly, this did not serve them well in formulating a strategy: they were hampered, beyond the shortage of material resources, by a kind of 'conceptual obsolescence', a failure to update their cognitive tools to fit the task in hand. In at least some cases, intelligence actively abets stupidity by allowing pernicious rationalisation.

Stupidity will often arise in cases like this, when an outdated conceptual framework is forced into service, mangling the user's grip on some new phenomenon. It is important to distinguish this from mere error. We make mistakes for all kinds of reasons. Stupidity is rather one specific and stubborn cause of error. Historically, philosophers have worried a great deal about the irrationality of not taking the available means to achieve goals: Tom wants to get fit, yet his running shoes are quietly gathering dust. The stock solution to Tom's quandary is simple willpower. Stupidity is very different from this. It is rather a lack of the necessary means, a lack of the necessary intellectual equipment. Combatting it will typically require not brute willpower but the construction of a new way of seeing our self and our world. Such stupidity is perfectly compatible with intelligence: Haig was by any standard a smart man.

SubQuestion No : 23

Q.23 Which of the following statements BEST explains why stupidity for a smart person is "perfectly compatible with intelligence"?

- Ans**
- A. Intelligence is poorly defined, and is usually a perception, making it compatible with stupidity.
 - B. Intelligence, when perceived through past successes, makes any rationalization of a new phenomenon acceptable.
 - C. Past successes make us believe that we are intelligent and capable of explaining any new phenomenon.
 - D. A new phenomenon creates fear, rushing intelligent people to explain it to put others at ease.
 - E. Intelligent people are scared to admit their lack of knowledge, and therefore, try to explain everything including things they do not understand.

Question ID : 6302611324

Status : Answered

Chosen Option : E

Comprehension:

Read the passage carefully and answer the THREE questions that follow.

Stupidity is a very specific cognitive failing. Crudely put, it occurs when you don't have the right conceptual tools for the job. The result is an inability to make sense of what is happening and a resulting tendency to force phenomena into crude, distorting pigeonholes.

This is easiest to introduce with a tragic case. British high command during the First World War frequently understood trench warfare using concepts and strategies from the cavalry battles of their youth. As one of Field Marshal Douglas Haig's subordinates later remarked, they thought of the trenches as 'mobile operations at the halt': i.e., as fluid battle lines with the simple caveat that nothing in fact budged for years. Unsurprisingly, this did not serve them well in formulating a strategy: they were hampered, beyond the shortage of material resources, by a kind of 'conceptual obsolescence', a failure to update their cognitive tools to fit the task in hand. In at least some cases, intelligence actively abets stupidity by allowing pernicious rationalisation.

Stupidity will often arise in cases like this, when an outdated conceptual framework is forced into service, mangling the user's grip on some new phenomenon. It is important to distinguish this from mere error. We make mistakes for all kinds of reasons. Stupidity is rather one specific and stubborn cause of error. Historically, philosophers have worried a great deal about the irrationality of not taking the available means to achieve goals: Tom wants to get fit, yet his running shoes are quietly gathering dust. The stock solution to Tom's quandary is simple willpower. Stupidity is very different from this. It is rather a lack of the necessary means, a lack of the necessary intellectual equipment. Combatting it will typically require not brute willpower but the construction of a new way of seeing our self and our world. Such stupidity is perfectly compatible with intelligence: Haig was by any standard a smart man.

SubQuestion No : 24

Q.24 Based on the passage, which of the following can BEST help a leader avoid stupidity?

- Ans
- A. Be ready to discuss with everyone before taking a decision
 - B. Be cautious in taking a decision until the future unfolds
 - C. Being aware that our current answers are only applicable to the current context
 - D. Being aware that we are short of the required resources
 - E. Being aware that we must handle future with a different cognitive tool

Question ID : 6302611325

Status : Answered

Chosen Option : C

Q.25 Read the passage carefully and answer the following question.

Labouring is simply what we do to survive. We labour to eat. To keep our bodies healthy. To keep roof over our heads, and to keep life reproducing. All animals labour, with or without coaxing.... There's nothing special about labour, save for the fact that without it we would die.

Work, on the other hand, gives collective meaning to what we do. When we work to produce something we both put something into and leave something lasting in the world: a table, a house, a book, a car, a rug, a high precision piece of engineering with which we can order the days into time, or keep a body breathing.

Which of the following statements can be BEST concluded from the passage?

- Ans
- A. To be healthy needs labour, while making others healthy is work
 - B. Doing what is asked of a role is labour, while going beyond the role is work
 - C. Labour enables us to survive while work makes survival meaningful
 - D. Terrace gardening is labour, while producing a vaccine is work
 - E. Unacknowledged work is labour, while acknowledgement makes it work

Question ID : 6302611309

Status : Answered

Chosen Option : C

Q.26 Arrange the following sentences in a LOGICAL sequence:

1. But when it comes to companies that lack computer programmers, the government is far more sympathetic.
2. As a result, limited access to foreign talent is a common gripe of tech founders and venture capitalists.
3. And, demand for the latter has soared among British startups.
4. This is less inconsistent than it may seem.
5. An HGV driver takes between six and ten weeks to train; a competent coder several years.

- Ans
- A. 3,5,1,2,4
 - B. 3,4,2,1,5
 - C. 1,4,5,3,2
 - D. 3,5,4,2,1
 - E. 1,2,5,3,4

Question ID : 6302611306

Status : Answered

Chosen Option : C

Section : Decision Making

Comprehension:

Read the following scenario and answer the THREE questions that follow.

Dileep Dosan sells dosas in front of an upscale hospital at a city in Punjab. He only sells two varieties of dosas: plain for ₹25 and masala for ₹40.

His dosa stall is popular amongst the hospital staff members, who mostly hail from South India and form his core clientele. They frequent his stall during office hours as they find his dosas to be reasonably priced. Though the hospital staff members can visit the upscale food court on the top floor of the hospital, they prefer his stall for breakfast and lunch, and even for occasional evening snacks. His daily sale volume varies between 300 and 400 dosas, in which the demand for masala dosas is around 50-60%.

SubQuestion No : 1

Q.1 One day, Dileep, while walking through the hospital food court, sees a vacant spot. He wonders if he can shift his stall to that spot.

Which of the following information will dissuade him the MOST from shifting his stall to the food court?

- Ans
- A. The food court has no other stall selling dosas.
 - B. The food court closes by 10:30 pm, though his current stall is open till midnight.
 - C. The food court sees a daily footfall of about 5000 people.
 - D. On enquiry, he learnt that the cheapest dish in the food court is priced at ₹200.
 - E. All the restaurants in the food court, except the fast-food stalls, sell North Indian meal during lunch time.

Question ID : 6302611339

Status : Answered

Chosen Option : B

Comprehension:

Read the following scenario and answer the THREE questions that follow.

Dileep Dosan sells dosas in front of an upscale hospital at a city in Punjab. He only sells two varieties of dosas: plain for ₹25 and masala for ₹40. His dosa stall is popular amongst the hospital staff members, who mostly hail from South India and form his core clientele. They frequent his stall during office hours as they find his dosas to be reasonably priced. Though the hospital staff members can visit the upscale food court on the top floor of the hospital, they prefer his stall for breakfast and lunch, and even for occasional evening snacks. His daily sale volume varies between 300 and 400 dosas, in which the demand for masala dosas is around 50-60%.

SubQuestion No : 2

Q.2 Dileep shifts his stall to the hospital food court. He prices his plain dosa at ₹40 and masala dosa at ₹60. However, two months on, he is serving only about 150 dosas per day. The clientele is mostly the same hospital staff members, who had been his customers before he moved to the food court.

Which of the following actions will BEST help Dileep in increasing his sales?

- Ans A. Increase prices of all the food items by 50% and introduce a new Shezwan dosa at ₹200 a plate
- B. Reduce price by 20% for hospital staff, and increase the price by 50% for others
- C. Introduce a North Indian meal, and give a discount of 20% to the hospital staff members
- D. Introduce a South Indian meal, exclusively for the hospital staff members at a discounted rate of ₹40 per plate
- E. Add more varieties of dosas at higher price points, and reduce plain and masala dosa prices to ₹25 and ₹40 respectively

Question ID : 6302611340

Status : Answered

Chosen Option : E

Comprehension:

Read the following scenario and answer the THREE questions that follow.

Dileep Dosan sells dosas in front of an upscale hospital at a city in Punjab. He only sells two varieties of dosas: plain for ₹25 and masala for ₹40. His dosa stall is popular amongst the hospital staff members, who mostly hail from South India and form his core clientele. They frequent his stall during office hours as they find his dosas to be reasonably priced. Though the hospital staff members can visit the upscale food court on the top floor of the hospital, they prefer his stall for breakfast and lunch, and even for occasional evening snacks. His daily sale volume varies between 300 and 400 dosas, in which the demand for masala dosas is around 50-60%.

SubQuestion No : 3

Q.3 On the first anniversary of his stall at the food court, Dileep reviews his customer base. Almost all of his customers are the hospital staff members. Though he wishes to serve the general visitors at the hospital, they avoid his stall. On enquiring, he discovers that visitors generally avoid his stall because it is majorly frequented by the hospital staff members, giving it a feel of a staff canteen. Dileep realizes his best efforts have not given him any extra sales and the visitors can potentially increase his revenue by a considerable amount.

Which of the following options can BEST help Dileep in discouraging hospital staff members from visiting his stall while increasing his overall revenue?

- Ans A. Appeal to the hospital management to give a space in the staffroom where an exclusive dosa counter can be set up by Dileep
- B. Introduce a massive discount on price for the next two months to increase the footfall
- C. Provide a discount to those hospital staff members who order on phone, and deliver food in their staffroom
- D. Charge the hospital staff members a premium to offset the losses due to their presence
- E. Request the hospital management to prohibit hospital staff from entering the food court

Question ID : 6302611341

Status : Answered

Chosen Option : C

Comprehension:

Read the following scenario and answer the THREE questions that follow.

Korkai is a serene village, nestled in a small island, separated from the mainland by a strait — the world forgot to name. Its inhabitants are mostly fishermen; a few are cattle-grazers too. A boat ride across the strait is the only mode of transport to the mainland.

Budugu, the boatman, ferries people, cattle, and bicycles across the strait in his boat for a living. The remoteness and the lack of connection to the mainland has served him well. He has a family of five. His two daughters are away studying in a city college and dream of corporate jobs in the cities. His ailing mother and wife complete his family.

Budugu sent his daughters to study in the city as there is only one school in Korkai, run by an NGO. The NGO prepares the village kids for higher studies. For those who cannot go to cities, the NGO teaches them about the virtues of the local way of life.

Budugu is a member of the village Panchayat that runs the village administration. At Korkai, hardly anyone remembers the local MLA or MP. Interestingly, the local MLA visited last week, and informed the islanders of major changes planned for the region: urgent construction of a bridge connecting the island to the mainland, and real estate development. She announced that the island will become a well-known eco-tourism destination in the state. She stressed that the local livelihood, dependent on fortunes at the sea, might enjoy the certainty in minimum wages, meted out by the eco-resort owners. Nevertheless, some villagers fear that the bridge will irreversibly change their lives and livelihoods.

SubQuestion No : 4

Q.4 Budugu fears that the proposed bridge will leave him jobless, and is determined to do something about it. He wants to gather effective support in order to get the construction of the proposed bridge delayed.

Which of the following will be the MOST feasible option for Budugu to gather effective support?

- Ans**
- A. Form a boat rowers' association and sit on a hunger strike to protest the proposed bridge
 - B. Suspend his boat services till the villagers start supporting his cause
 - C. Partner with the local NGO and campaign that the developments will ruin the local way of life
 - D. Inform the environmental experts in the nearby cities that the strait is home to rare fish, frogs and turtles
 - E. Get a resolution passed by the Panchayat that the bridge will ruin the local way of life

Question ID : 6302611351

Status : Answered

Chosen Option : E

Comprehension:

Read the following scenario and answer the THREE questions that follow.

Korkai is a serene village, nestled in a small island, separated from the mainland by a strait — the world forgot to name. Its inhabitants are mostly fishermen; a few are cattle-grazers too. A boat ride across the strait is the only mode of transport to the mainland.

Budugu, the boatman, ferries people, cattle, and bicycles across the strait in his boat for a living. The remoteness and the lack of connection to the mainland has served him well. He has a family of five. His two daughters are away studying in a city college and dream of corporate jobs in the cities. His ailing mother and wife complete his family.

Budugu sent his daughters to study in the city as there is only one school in Korkai, run by an NGO. The NGO prepares the village kids for higher studies. For those who cannot go to cities, the NGO teaches them about the virtues of the local way of life.

Budugu is a member of the village Panchayat that runs the village administration. At Korkai, hardly anyone remembers the local MLA or MP. Interestingly, the local MLA visited last week, and informed the islanders of major changes planned for the region: urgent construction of a bridge connecting the island to the mainland, and real estate development. She announced that the island will become a well-known eco-tourism destination in the state. She stressed that the local livelihood, dependent on fortunes at the sea, might enjoy the certainty in minimum wages, meted out by the eco-resort owners. Nevertheless, some villagers fear that the bridge will irreversibly change their lives and livelihoods.

SubQuestion No : 5

Q.5 The local MLA is worried about the resistance to the project. This project, like her other successful projects in nearby villages, was supposed to garner a significant amount of funding. Moreover, it would make her the face of development in the state; perhaps, even would land her a ministerial berth. However, Budugu's activism has cast the project in a bad light among the popular minds. The MLA wants to protect her pro-development image.

Which of the following is the BEST course of action for the MLA?

- Ans**
- A. Create a fishermen and boat rowers' cooperative in the island and donate generously to it
 - B. Invite the village Panchayat for a discussion on a possible compromise solution
 - C. Appoint a task force to find alternative land nearby for the project
 - D. Discredit Budugu in a public meeting by announcing that he is putting his interests over and above the village development
 - E. Publicise widely that the project will improve the socio-economic condition of the island

Question ID : 6302611352

Status : Answered

Chosen Option : B

Comprehension:

Read the following scenario and answer the THREE questions that follow.

Korkai is a serene village, nestled in a small island, separated from the mainland by a strait — the world forgot to name. Its inhabitants are mostly fishermen; a few are cattle-grazers too. A boat ride across the strait is the only mode of transport to the mainland.

Budugu, the boatman, ferries people, cattle, and bicycles across the strait in his boat for a living. The remoteness and the lack of connection to the mainland has served him well. He has a family of five. His two daughters are away studying in a city college and dream of corporate jobs in the cities. His ailing mother and wife complete his family.

Budugu sent his daughters to study in the city as there is only one school in Korkai, run by an NGO. The NGO prepares the village kids for higher studies. For those who cannot go to cities, the NGO teaches them about the virtues of the local way of life.

Budugu is a member of the village Panchayat that runs the village administration. At Korkai, hardly anyone remembers the local MLA or MP. Interestingly, the local MLA visited last week, and informed the islanders of major changes planned for the region: urgent construction of a bridge connecting the island to the mainland, and real estate development. She announced that the island will become a well-known eco-tourism destination in the state. She stressed that the local livelihood, dependent on fortunes at the sea, might enjoy the certainty in minimum wages, meted out by the eco-resort owners. Nevertheless, some villagers fear that the bridge will irreversibly change their lives and livelihoods.

SubQuestion No : 6

Q.6 As the project gets delayed, Budugu becomes a well-known social activist with a lot of followers. When Pragati, his elder daughter, finishes her education and starts looking for employment, a few known corporates refuse her a job because of her father's "anti-development" stand.

Which of the following options BEST communicates to the corporates that Pragati has an identity of her own?

- Ans**
- A. Go all out on social media to explain how her father's activism is misconstrued by certain corporates
 - B. Stop using her last name in her job applications
 - C. Showcase on social media the accolades and awards she received in her college
 - D. Discuss in a social media post why she supports the proposed development in her island village
 - E. Start a blog and update it regularly with views on current affairs

Question ID : 6302611353

Status : Answered

Chosen Option : A

Comprehension:

Read the following scenario and answer the THREE questions that follow.

Fundamental Research in Science for Corporate Applications (FuRSCA) is an R&D unit of a Public Sector Undertaking (PSU). FuRSCA's employees are research scientists who assist the Public Sector Undertaking through their R&D. Given the far-reaching implications of its research, FuRSCA was established as a separate entity near the factory of the PSU. FuRSCA has three levels of hierarchy viz.: junior, senior and chief scientists and all of them reside on the campus. Hence, every scientist, regardless of hierarchy, resides in a house that is similar in all aspects. Though the scientists are entitled to a house rent allowance (HRA), given the distance of FuRSCA from the city, housing them on the campus makes sense. The new recruits are provided a transit accommodation in the institute's studio apartments, until vacant houses are available. For these recruits, a queue has been created on the basis of their date of joining and not on hierarchy, with the most recent recruit going to the last in the queue. Execution of this policy is the responsibility of the FuRSCA Chief Administrative Officer (CAO), who reports to the Director of FuRSCA.

SubQuestion No : 7

Q.7 Harsh Kohli resides in house no. 324. Since long, Harsh wants to move from a 3 series house to a 2 series house because his mother-in-law, a chief scientist, lives alone in house no. 225. A few years back, Harsh formally requested the CAO to allow him to move to a 2 series house whenever available. Recently, when house no. 224 becomes vacant, Harsh appeals to the CAO for that house, citing his earlier request. Currently, there are five scientists waiting in the queue and Sauf Tangud is on the top of the queue.

From the following options, choose the BEST action to be taken by the CAO without violating the existing housing policy.

- Ans** **A. Ask Harsh to move to the house no. 224 immediately, and allocate Harsh's house to Sauf**
- B. Ask Harsh to join the queue because scientists in the queue should be given priority**
- C. Ignore Harsh's request since it violates the housing policy**
- D. Create a separate queue for extant residents and give them the first right to refuse**
- E. Allot house no. 224 to Sauf, asking Harsh to negotiate a possible swap with Sauf**

Question ID : **6302611331**

Status : **Answered**

Chosen Option : **E**

Comprehension:

Read the following scenario and answer the THREE questions that follow.

Fundamental Research in Science for Corporate Applications (FuRSCA) is an R&D unit of a Public Sector Undertaking (PSU). FuRSCA's employees are research scientists who assist the Public Sector Undertaking through their R&D. Given the far-reaching implications of its research, FuRSCA was established as a separate entity near the factory of the PSU. FuRSCA has three levels of hierarchy viz.: junior, senior and chief scientists and all of them reside on the campus. Hence, every scientist, regardless of hierarchy, resides in a house that is similar in all aspects. Though the scientists are entitled to a house rent allowance (HRA), given the distance of FuRSCA from the city, housing them on the campus makes sense. The new recruits are provided a transit accommodation in the institute's studio apartments, until vacant houses are available. For these recruits, a queue has been created on the basis of their date of joining and not on hierarchy, with the most recent recruit going to the last in the queue. Execution of this policy is the responsibility of the FuRSCA Chief Administrative Officer (CAO), who reports to the Director of FuRSCA.

SubQuestion No : 8

Q.8 Rawng Regrud joins FuRSCA recently and is placed third in the housing queue. He has been temporarily housed in a studio apartment. Given that the studio apartment is too small, he requests his sister to take care of their ailing parents while he awaits a regular house allotment. As months pass, his sister finds it difficult to accommodate her parents along with her in-laws. She requests Rawng to accommodate them with his family. Since he is third in the queue, he may not get a house allotted in the near future. He approaches the CAO with a request to be moved up the queue on humanitarian grounds.

Which of the following responses by the CAO shall be perceived as the MOST appropriate by all the stakeholders?

- Ans**
- A. Ask Rawng to meet with the director of FuRSCA and present his case to get an exception
 - B. Inform Rawng that nothing can be done since violation of rules will set a wrong precedence
 - C. Ask Rawng to negotiate and arrive at a consensus with the two scientists ahead in the queue which the CAO shall implement
 - D. Move Rawng to the top of the queue, and make a rule that scientists with ailing parents shall be given preference
 - E. Facilitate Rawng in getting a house in the city, along with a free commutation for the first three months

Question ID : 6302611332

Status : Answered

Chosen Option : C

Comprehension:

Read the following scenario and answer the THREE questions that follow.

Fundamental Research in Science for Corporate Applications (FuRSCA) is an R&D unit of a Public Sector Undertaking (PSU). FuRSCA's employees are research scientists who assist the Public Sector Undertaking through their R&D. Given the far-reaching implications of its research, FuRSCA was established as a separate entity near the factory of the PSU. FuRSCA has three levels of hierarchy viz.: junior, senior and chief scientists and all of them reside on the campus. Hence, every scientist, regardless of hierarchy, resides in a house that is similar in all aspects. Though the scientists are entitled to a house rent allowance (HRA), given the distance of FuRSCA from the city, housing them on the campus makes sense. The new recruits are provided a transit accommodation in the institute's studio apartments, until vacant houses are available. For these recruits, a queue has been created on the basis of their date of joining and not on hierarchy, with the most recent recruit going to the last in the queue. Execution of this policy is the responsibility of the FuRSCA Chief Administrative Officer (CAO), who reports to the Director of FuRSCA.

SubQuestion No : 9

Q.9 Of late, the CAO has received several requests from the residents of 3 series houses to move to other series houses. The CAO is aware that this is largely because of their own noisy factory nearby. Due to limited housing available on the campus, he must do something before the problem worsens. He wants to find a solution that makes the lives of 3 series residents more comfortable.

Which of the following actions can BEST help the CAO in achieving his goal?

- Ans**
- A. Appeal to the top management to make the factory work for only five days a week
 - B. Install expensive sound proof windows in the 3 series quarters
 - C. Provide 3 series residents with a hardship allowance of 15% of basic salary
 - D. Offer a higher HRA to 3 series residents, nudging them to move to the city
 - E. Introduce a policy of accelerated promotion for junior scientists living in 3 series quarters

Question ID : 6302611333

Status : Answered

Chosen Option : B

Comprehension:

Read the following scenario and answer the THREE questions that follow.

A2Z is a state-funded leading engineering college in the country, renowned for its teaching and placements. Now, A2Z aspires to be a global leader in research as well. A2Z has, therefore, decided to push for better quality research from its newly recruited faculty members. In the past, a few faculty members were confirmed because of their exceptional teaching feedback even though their research output was below par. Currently, the Dean, in consultation with the academic council, has included the quality of research as a mandatory requirement along with teaching excellence for the confirmation of the newly recruited faculty members. (The academic council comprises of the senior faculty members from different departments.)

Initially, newly recruited faculty members are put on a probation for three years. Either they are confirmed or their probation is extended or their services are terminated, based on teaching and research contributions. Once confirmed, their job is secure along with other additional perquisites.

Aparna joined the social sciences department of A2Z two years back. She is amongst the many faculty members, recruited after the new norms for confirmation were introduced. She completed her doctorate from a reputed university in the USA, with a significant research contribution. However, after joining A2Z, Aparna got deeply involved in social outreach as COVID-19 was spreading. Though her social outreach has given her immense satisfaction, she has nothing to show against research contributions; further, it has impacted her teaching effectiveness. Her confirmation is due in a year.

SubQuestion No : 10

Q.10 The Dean, during the annual appraisal of Aparna, realizes that her research contribution needs considerable investment of time and efforts. He is concerned that her performance could set a wrong precedent for the new faculty recruits. The dean wants to communicate to the new faculty recruits that research contribution is critical.

Which of the following actions will BEST help the Dean in achieving the objective, while being fair to Aparna?

- Ans**
- A. Extend Aparna's probation period by an additional year, while reminding her about the research and teaching contributions needed for confirmation
 - B. Appreciate Aparna's social outreach, but advise her to focus on research and teaching contributions as they are essential for confirmation
 - C. Increase her teaching and research requirements, while extending her probation period by two years
 - D. Suggest Aparna to start looking for a new job in the time available to her
 - E. Exhort Aparna to suspend her social outreach activities till the end of her probation, and to focus on research and teaching instead

Question ID : **6302611355**

Status : **Answered**

Chosen Option : **A**

Comprehension:

Read the following scenario and answer the THREE questions that follow.

A2Z is a state-funded leading engineering college in the country, renowned for its teaching and placements. Now, A2Z aspires to be a global leader in research as well. A2Z has, therefore, decided to push for better quality research from its newly recruited faculty members. In the past, a few faculty members were confirmed because of their exceptional teaching feedback even though their research output was below par. Currently, the Dean, in consultation with the academic council, has included the quality of research as a mandatory requirement along with teaching excellence for the confirmation of the newly recruited faculty members. (The academic council comprises of the senior faculty members from different departments.)

Initially, newly recruited faculty members are put on a probation for three years. Either they are confirmed or their probation is extended or their services are terminated, based on teaching and research contributions. Once confirmed, their job is secure along with other additional perquisites.

Aparna joined the social sciences department of A2Z two years back. She is amongst the many faculty members, recruited after the new norms for confirmation were introduced. She completed her doctorate from a reputed university in the USA, with a significant research contribution. However, after joining A2Z, Aparna got deeply involved in social outreach as COVID-19 was spreading. Though her social outreach has given her immense satisfaction, she has nothing to show against research contributions; further, it has impacted her teaching effectiveness. Her confirmation is due in a year.

SubQuestion No : 11

Q.11 One year on, Aparna continues with her social work. Gradually, she gets closer to the end of her probation and she has not much to show against her teaching and research contributions. However, her social work has been widely appreciated by the local media. The Chief Minister of the state wants Aparna to take a larger role in social outreach and assist the government.

The Dean is afraid that not confirming Aparna might prompt her to leave the institution, sending a wrong signal to the outside world. However, he also wants to send a message to the newly joined faculty members that teaching and research contributions are essential for confirmation.

Which of the following actions by the Dean is the MOST sustainable given the circumstances?

- Ans**
- A. Offer Aparna a five-year contractual position after which she has to leave irrespective of her contributions
 - B. Offer to create a non-teaching position of outreach officer for Aparna, but terminate her from the teaching position
 - C. Extend Aparna's probation by three years, and tell her that she would have to leave if her research and teaching do not improve in that period
 - D. Confirm Aparna, but freeze her increments and promotions until her research contributions are as per the expected standards
 - E. Declare that Aparna's extraordinary achievement deserves to be treated exceptionally, and confirm her

Question ID : 6302611356

Status : Answered

Chosen Option : C

Comprehension:

Read the following scenario and answer the THREE questions that follow.

A2Z is a state-funded leading engineering college in the country, renowned for its teaching and placements. Now, A2Z aspires to be a global leader in research as well. A2Z has, therefore, decided to push for better quality research from its newly recruited faculty members. In the past, a few faculty members were confirmed because of their exceptional teaching feedback even though their research output was below par. Currently, the Dean, in consultation with the academic council, has included the quality of research as a mandatory requirement along with teaching excellence for the confirmation of the newly recruited faculty members. (The academic council comprises of the senior faculty members from different departments.)

Initially, newly recruited faculty members are put on a probation for three years. Either they are confirmed or their probation is extended or their services are terminated, based on teaching and research contributions. Once confirmed, their job is secure along with other additional perquisites.

Aparna joined the social sciences department of A2Z two years back. She is amongst the many faculty members, recruited after the new norms for confirmation were introduced. She completed her doctorate from a reputed university in the USA, with a significant research contribution. However, after joining A2Z, Aparna got deeply involved in social outreach as COVID-19 was spreading. Though her social outreach has given her immense satisfaction, she has nothing to show against research contributions; further, it has impacted her teaching effectiveness. Her confirmation is due in a year.

SubQuestion No : 12

Q.12 A few months later, Aparna, during an interview with the local media, inadvertently expresses her fear that she might be let go by A2Z because she has not met its teaching and research requirements. Consequently, the academic council urges the Dean to review the faculty confirmation policy. The Dean, however, believes that any change in the policy will be a setback to the institute's aspirations of becoming a global leader in research.

Which of the following actions by the Dean will be the MOST appropriate, given the circumstances?

- Ans**
- A. Confirm Aparna, but ask her to issue a public statement, acknowledging the importance A2Z gives to research contributions
 - B. Tell Aparna that she is being let go for insulting the college on a public platform
 - C. Confirm Aparna, but make it clear that her future promotions will be tied to her research contribution and teaching feedback
 - D. Convey to Aparna that the institute is eager to retain her; however, emphasize that she should focus on research to get confirmed
 - E. Give an interview to a local newspaper and share Aparna's lack of research and poor teaching feedback

Question ID : 6302611357

Status : Answered

Chosen Option : D

Comprehension:

Read the following scenario and answer the THREE questions that follow.

Raghubir, a reputed doctor, practices medicine in a tier-three city. He owns an imported SUV which he bought 10 years ago, using his hard-earned savings of nearly 5 years. Initially, he used to take it for long rides, but for the last 6-7 years, he only commutes to his clinic, a 10-minute drive from his home.

The SUV has been his proud possession but it demands high maintenance. Also, the diesel-guzzling SUV does not comply with the new emission norms being introduced in the tier-one and tier-two cities. Of late, a few newspapers reported that the new emission norms may be introduced in tier-three cities as well. This news has worried Raghubir.

SubQuestion No : 13

Q.13 Raghubir is afraid that once the new emission norms are rolled out, he might not be able to use his SUV anymore.

Which of the following options will BEST put Raghubir at ease with using his SUV for some more time?

- Ans
- A. Non-compliant SUVs are still plying in tier-two cities
 - B. His city has many other SUVs which are as old as his
 - C. As a sought-after doctor, all the law enforcement officials are his patients
 - D. His lawyer friends in his city recently bought non-compliant SUVs from tier-two cities
 - E. His mechanic assures him that the new norms will not be introduced anytime soon

Question ID : 6302611347

Status : Answered

Chosen Option : E

Comprehension:

Read the following scenario and answer the THREE questions that follow.

Raghubir, a reputed doctor, practices medicine in a tier-three city. He owns an imported SUV which he bought 10 years ago, using his hard-earned savings of nearly 5 years. Initially, he used to take it for long rides, but for the last 6-7 years, he only commutes to his clinic, a 10-minute drive from his home.

The SUV has been his proud possession but it demands high maintenance. Also, the diesel-guzzling SUV does not comply with the new emission norms being introduced in the tier-one and tier-two cities. Of late, a few newspapers reported that the new emission norms may be introduced in tier-three cities as well. This news has worried Raghubir.

SubQuestion No : 14

Q.14 Anya, Raghubir's daughter, works in a metro city. She is concerned about private transport emissions and is unhappy with her father's diesel-guzzling SUV. Though she wants her father to be more environmentally responsible, she is aware that any drastic suggestion might attract strong resistance. Hence, she wants a solution, acceptable to Raghubir, that gently dissuades him from using his SUV on a daily basis.

Which of the following actions by Anya will BEST dissuade Raghubir from using his SUV on a daily basis?

- Ans
- A. Take away Raghubir's SUV to the metro city and gift him a new SUV
 - B. Request Raghubir to use public transport for his daily commute, and use the SUV sparingly
 - C. Ask Raghubir's secretary to ferry him to the clinic daily in her car, except for the weekends
 - D. Gift Raghubir a small petrol car and convince him to sell his SUV
 - E. Ask his mechanic to explore if the SUV can be retrofitted with a CNG kit

Question ID : 6302611348

Status : Answered

Chosen Option : C

Comprehension:

Read the following scenario and answer the THREE questions that follow.

Raghubir, a reputed doctor, practices medicine in a tier-three city. He owns an imported SUV which he bought 10 years ago, using his hard-earned savings of nearly 5 years. Initially, he used to take it for long rides, but for the last 6-7 years, he only commutes to his clinic, a 10-minute drive from his home.

The SUV has been his proud possession but it demands high maintenance. Also, the diesel-guzzling SUV does not comply with the new emission norms being introduced in the tier-one and tier-two cities. Of late, a few newspapers reported that the new emission norms may be introduced in tier-three cities as well. This news has worried Raghubir.

SubQuestion No : 15

Q.15 The new emission norms are about to get implemented in tier-three cities, and Raghubir's city will follow suit shortly. Hence, Raghubir starts exploring options of buying an electric vehicle (EV). He lists the following factors that will guide him on buying an electric car:

P. EVs within Raghubir's budget can cover his daily commute, but not the long rides.

Q. A new electric SUV in the market, within his budget, nearly has the same look and feel of his present SUV.

R. EVs cannot be driven beyond a speed of 70 kmph.

S. New charging stations on the main highway, connecting his city to the closest metro city, may come up in another year.

T. The only shop, selling EVs in his city, is ready to trade in Raghubir's SUV at a reasonable price.

The above listed factors have been arranged in a DECREASING order of influence in the options given below.

Which of the following options will BEST help Raghubir buy an electric vehicle immediately?

Ans A. TQRPS

B. QTPSR

C. QRTPS

D. TQRSP

E. SPTQR

Question ID : 6302611349

Status : Answered

Chosen Option : B

Comprehension:

Read the following scenario and answer the THREE questions that follow.

Future Leaders is one of the most prestigious private schools in a small town, next to an industrial hub. Most of its students come from affluent families, but there are some who belong to middle-income and lower middle-income families as well. The school charges an annual fee of ₹2 lakhs, inclusive of all charges, payable at the beginning of the academic year. Roughly 20% of the fees collected goes into paying the salaries of the teachers, another 30% for the upkeep of the school, and roughly 20% for miscellaneous expenses in running day-to-day businesses like supply, cleaning etc. The remaining goes into an exigency corpus. This year, like the rest of the country, the town has been hit by the coronavirus pandemic. The classes have been shifted online. The local authorities have mandated that all schools have to reduce their fees by 20%. Further, parents should be given extended time to pay the fees if they are in financial distress. Six months into the academic year, only 40% of the parents have paid even the reduced annual fees.

SubQuestion No : 16

Q.16 Ajay Biswas, the rector of the school, is alarmed by the shortfall in fee payments and wants to find the best solution to manage the situation. He does not want to trouble parents who might be genuinely in financial distress, but feels that there may be a possibility that many parents are taking advantage of the situation.

Which of the following actions by the school will BEST make financially capable parents pay the fees?

- Ans**
- A. Give a 10% bonus marks to all those students who have paid the fees
 - B. Share through local newspapers that the school is facing financial crunch and may have to close down if parents don't pay fees
 - C. Ask parents to submit a proof of financial distress within two weeks, failing which can bar their wards from attending classes
 - D. Offer 10% and 5% discounts to parents paying fees within the next one week and two weeks respectively
 - E. Call parents every three days, requesting them to pay the fees and help their school out

Question ID : 6302611335

Status : Answered

Chosen Option : C

Comprehension:

Read the following scenario and answer the THREE questions that follow.

Future Leaders is one of the most prestigious private schools in a small town, next to an industrial hub. Most of its students come from affluent families, but there are some who belong to middle-income and lower middle-income families as well. The school charges an annual fee of ₹2 lakhs, inclusive of all charges, payable at the beginning of the academic year. Roughly 20% of the fees collected goes into paying the salaries of the teachers, another 30% for the upkeep of the school, and roughly 20% for miscellaneous expenses in running day-to-day businesses like supply, cleaning etc. The remaining goes into an exigency corpus. This year, like the rest of the country, the town has been hit by the coronavirus pandemic. The classes have been shifted online. The local authorities have mandated that all schools have to reduce their fees by 20%. Further, parents should be given extended time to pay the fees if they are in financial distress. Six months into the academic year, only 40% of the parents have paid even the reduced annual fees.

SubQuestion No : 17

Q.17 The board of trustees of the school is concerned about the current financial situation and has called Biswas for a meeting. The trustees have thought of the following actions, as listed below, to improve the school finances immediately:

P. Appeal to the local industrialists to donate to the school

Q. Withhold 20% of teachers' salary till the situation improves

R. Ask parents to pay up within a week or show a proof of financial distress

S. Stop online classes for a week to signal the desperate financial crunch

T. Start an extra section in every class and offer admission to whoever is willing to pay fees

Biswas is tasked to find the most feasible way of alleviating the financial crunch immediately.

Which of the following combinations of the above listed actions, in a DECREASING order of preference, will BEST help Biswas in achieving his goal?

- Ans A. RSQTP
 B. TSRPQ
 C. QRSPT
 D. PRSQT
 E. PSTRQ

Question ID : 6302611336

Status : Answered

Chosen Option : D

Comprehension:

Read the following scenario and answer the THREE questions that follow.

Future Leaders is one of the most prestigious private schools in a small town, next to an industrial hub. Most of its students come from affluent families, but there are some who belong to middle-income and lower middle-income families as well. The school charges an annual fee of ₹2 lakhs, inclusive of all charges, payable at the beginning of the academic year. Roughly 20% of the fees collected goes into paying the salaries of the teachers, another 30% for the upkeep of the school, and roughly 20% for miscellaneous expenses in running day-to-day businesses like supply, cleaning etc. The remaining goes into an exigency corpus. This year, like the rest of the country, the town has been hit by the coronavirus pandemic. The classes have been shifted online. The local authorities have mandated that all schools have to reduce their fees by 20%. Further, parents should be given extended time to pay the fees if they are in financial distress. Six months into the academic year, only 40% of the parents have paid even the reduced annual fees.

SubQuestion No : 18

Q.18 Teachers of Future Leaders contribute to its stellar reputation. Moreover, they assist the school in arriving at several critical decisions. Biswas resents their involvement in school matters as he has to listen to their collective voice rather than the other way around.

Biswas feels that the current situation offers him an opportunity to get back at the teachers. He wants to discuss the possibility of reducing teachers' salaries by 20% with the board of trustees.

Which of the following, if true, will BEST enable Biswas to present his case for reducing teachers' salaries?

- Ans**
- A. 30% of the most experienced teachers may resign if there is a pay cut
 - B. Most of the teachers are alumni of the school, and hence, should be asked to give back to the school through a pay cut
 - C. Future Leaders pays higher salaries to its teachers in comparison to the other schools in the city.
 - D. Two other well-known private schools in the city, struggling to survive, have resorted to a pay cut
 - E. Teachers' salaries are a significant part of the school's operating cost

Question ID : 6302611337

Status : Answered

Chosen Option : D

Comprehension:

Read the following scenario and answer the THREE questions that follow.

Sundaresan was a professor of Corporate Responsibility at a premium management institution. As a requirement of his course, students had to synthesize sustainability challenges, faced by thermal power companies and submit an assignment on them. Though it was an individual assignment, some students sought permission from Sundaresan to work on the assignment as a team. Sundaresan knew that collaboration fosters peer learning, and therefore, allowed them to work in teams. However, he mandated that a team should not exceed three members. While 15 students elected to work individually, other 15 formed teams of three each, and another 10 formed teams of two members each.

SubQuestion No : 19

Q.19 As assignment deadline came closer, Sundaresan was approached by Abbas Warram, who chose to work in a team of three members. He informed Sundaresan that Venkamma, his team member, distressed by the death of her grandmother, could not work on her bit of the assignment. Abbas requested for a deadline extension so that she could finish her part of the assignment. By then, many students who were working alone had already submitted their assignments.

Which of the following actions by Sundaresan is the MOST appropriate, given the circumstances?

- Ans** A. Disband the team and ask each student to work individually
- B. Warn Abbas that such issues should not be flagged to the professor and should be handled within the team
- C. Give extra time to Venkamma to work individually and ask the other two to stick to the original deadline as a team
- D. Extend the deadline for the team while imposing a one-grade penalty for the deadline extension
- E. Give the students a deadline extension, but add an extra assignment for the team as a new requirement

Question ID : 6302611343

Status : Answered

Chosen Option : C

Comprehension:

Read the following scenario and answer the THREE questions that follow.

Sundaresan was a professor of Corporate Responsibility at a premium management institution. As a requirement of his course, students had to synthesize sustainability challenges, faced by thermal power companies and submit an assignment on them. Though it was an individual assignment, some students sought permission from Sundaresan to work on the assignment as a team. Sundaresan knew that collaboration fosters peer learning, and therefore, allowed them to work in teams. However, he mandated that a team should not exceed three members. While 15 students elected to work individually, other 15 formed teams of three each, and another 10 formed teams of two members each.

SubQuestion No : 20

Q.20 When Sundaresan was about to grade the assignments, he received a request from the class representative regarding the students who worked individually. The request was to give those students additional marks because they handled the entire workload. This would improve their course grade significantly.

Which of the following is the MOST appropriate action by Sundaresan to mark the assignments?

- Ans** A. Convert the assignment into a non-graded assignment because both the individuals and the teams worked on the same assignment
- B. Treat both individual work and team work equally
- C. Reduce marks for those who worked in teams by 10%
- D. Give 10% extra marks to all those who worked individually
- E. Divide the total marks awarded to a team by the number of team members

Question ID : 6302611344

Status : Answered

Chosen Option : B

Comprehension:

Read the following scenario and answer the THREE questions that follow.

Sundaresan was a professor of Corporate Responsibility at a premium management institution. As a requirement of his course, students had to synthesize sustainability challenges, faced by thermal power companies and submit an assignment on them. Though it was an individual assignment, some students sought permission from Sundaresan to work on the assignment as a team. Sundaresan knew that collaboration fosters peer learning, and therefore, allowed them to work in teams. However, he mandated that a team should not exceed three members. While 15 students elected to work individually, other 15 formed teams of three each, and another 10 formed teams of two members each.

SubQuestion No : 21

Q.21 Sundaresan was going through the submitted assignments. Team 9, with three members, had impressive exhibits and charts. Later, he discovered that Team 13, with three members, also had the same exhibits and charts. He realized that one of the teams had copied from the other. Hence, he informed both the teams that he would award an F-grade (fail grade) to both the teams for copying. Later that evening, Aashi from Team 9 called and admitted to sharing exhibits and charts with Aanvi of Team 13. Further, she mentioned that Aanvi could not put enough efforts since she lost significant amount of time due to COVID-19. Therefore, Aanvi requested for help. However, Aanvi assured Aashi that she would not reproduce the shared content. Aashi requested Sundaresan to punish her and Aanvi and spare others as they were not involved.

Which of the following actions by Sundaresan is the MOST appropriate?

- Ans** A. Punish both the teams by giving F-grades
 B. Award an F-grade to both Aashi and Aanvi, and spare others
 C. Ask both the teams to work on an extra assignment to avoid an F-grade.
 D. Spare both the teams as such a confession is rare
 E. Punish Aanvi with an F-grade and spare others

Question ID : 6302611345

Status : Answered

Chosen Option : E

Section : Quantitative Aptitude and Data Interpretation

Q.1 A marble is dropped from a height of 3 metres onto the ground. After the hitting the ground, it bounces and reaches 80% of the height from which it was dropped. This repeats multiple times. Each time it bounces, the marble reaches 80% of the height previously reached. Eventually, the marble comes to rest on the ground.

What is the maximum distance that the marble travels from the time it was dropped until it comes to rest?

- Ans** A. 15 m
 B. 12 m
 C. 24 m
 D. 27 m
 E. 30 m

Question ID : 6302611359

Status : Answered

Chosen Option : D

Q.2 Some members of a social service organization in Kolkata decide to prepare 2400 laddoos to gift to children in various orphanages and slums in the city, during Durga Puja. The plan is that each of them makes the same number of laddoos. However, on laddoo-making day, ten members are absent, thus each remaining member makes 12 laddoos more than earlier decided.

How many members actually make the laddoos?

- Ans A. 50
 B. 90
 C. 40
 D. 24
 E. 100

Question ID : 6302611362

Status : Answered

Chosen Option : C

Q.3 A supplier receives orders from 5 different buyers. Each buyer places their order only on a Monday. The first buyer places the order after every 2 weeks, the second buyer, after every 6 weeks, the third buyer, after every 8 weeks, the fourth buyer, every 4 weeks, and the fifth buyer, after every 3 weeks. It is known that on January 1st, which was a Monday, each of these five buyers placed an order with the supplier.

On how many occasions, in the same year, will these buyers place their orders together excluding the order placed on January 1st?

- Ans A. 1
 B. 5
 C. 4
 D. 2
 E. 3

Question ID : 6302611358

Status : Answered

Chosen Option : D

Q.4 The sum of the cubes of two numbers is 128, while the sum of the reciprocals of their cubes is 2.

What is the product of the squares of the numbers?

- Ans A. 64
 B. 16
 C. 256
 D. 48
 E. 32

Question ID : 6302611361

Status : Answered

Chosen Option : B

Q.5 Ramesh and Reena are playing with triangle ABC. Ramesh draws a line that bisects $\angle BAC$; this line cuts BC at D. Reena then extends AD to a point P. In response, Ramesh joins B and P. Reena then announces that BD bisects $\angle PBA$, what a surprise! Together, Ramesh and Reena find that $BD = 6$ cm, $AC = 9$ cm, $DC = 5$ cm, $BP = 8$ cm, and $DP = 5$ cm.

How long is AP?

- Ans A. 10.5 cm
 B. 11 cm
 C. 11.5 cm
 D. 10.75 cm
 E. 11.75 cm

Question ID : 6302611360

Status : Not Attempted and
Marked For Review

Chosen Option : --

Q.6 Sheela purchases two varieties of apples – A and B – for a total of Rupees 2800. The weights in kg of A and B purchased by Sheela are in the ratio 5 : 8 but the cost per kg of A is 20% more than that of B. Sheela sells A and B with profits of 15% and 10% respectively.

What is the overall profit in Rupees?

- Ans A. 340
 B. 600
 C. 480
 D. 240
 E. 380

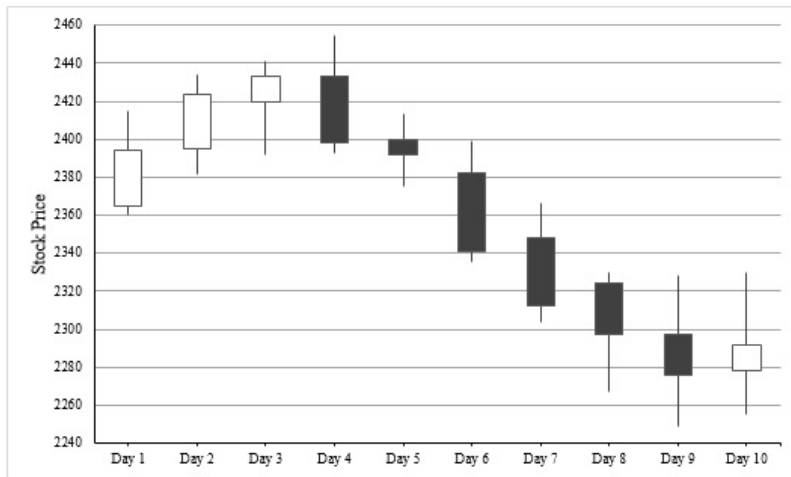
Question ID : 6302611363

Status : Answered

Chosen Option : A

Comprehension:

Read the following scenario and answer the THREE questions that follow.



The given candlestick chart depicts the prices of a particular stock over 10 consecutive days. A candlestick comprises of a rectangular box pieced by a line. The top and bottom ends of the line respectively indicate the maximum and minimum prices of the stock on that day, while the horizontal edges of the rectangle correspond to the stock's opening and closing prices. If the rectangle is white, the opening price is lower than the closing price, but if the rectangle is black, then it is the other way around.

Using the above information, answer the questions that follow:

SubQuestion No : 7

Q.7 Which day saw the maximum percentage increase in the stock price at closing from the opening?

- Ans A. Day 2
 B. Day 10
 C. Day 1
 D. Day 7
 E. Day 6

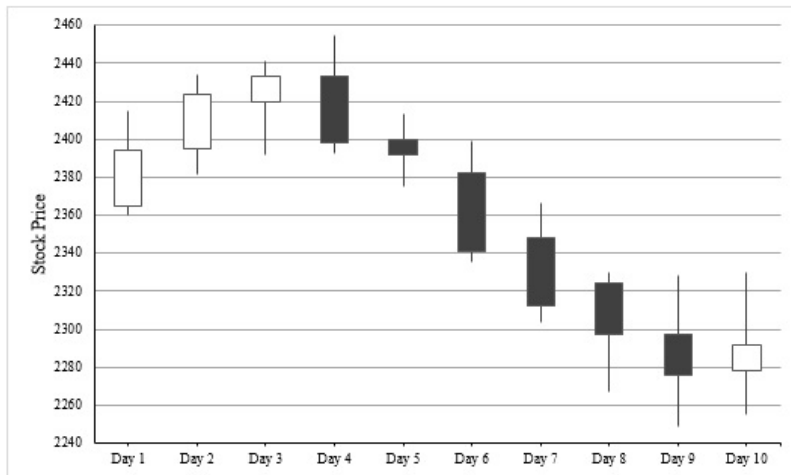
Question ID : 6302611383

Status : Answered

Chosen Option : C

Comprehension:

Read the following scenario and answer the THREE questions that follow.



The given candlestick chart depicts the prices of a particular stock over 10 consecutive days. A candlestick comprises of a rectangular box pieced by a line. The top and bottom ends of the line respectively indicate the maximum and minimum prices of the stock on that day, while the horizontal edges of the rectangle correspond to the stock's opening and closing prices. If the rectangle is white, the opening price is lower than the closing price, but if the rectangle is black, then it is the other way around.

Using the above information, answer the questions that follow:

SubQuestion No : 8

Q.8 What is the highest magnitude of change over two consecutive days (for example, Day 1 → Day 3 or Day 5 → Day 7), in the maximum price touched by the stock during the 10-day period (choose the closest amongst the options given)?

- Ans A. 70
 B. 80
 C. 50
 D. 60
 E. 40

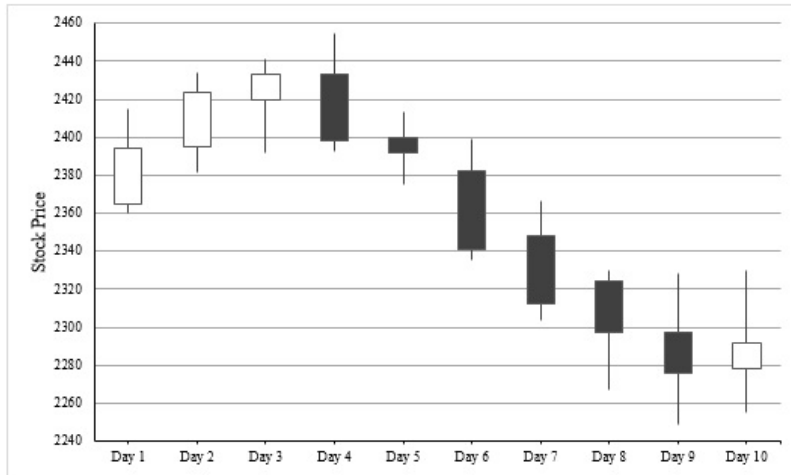
Question ID : 6302611384

Status : Answered

Chosen Option : A

Comprehension:

Read the following scenario and answer the THREE questions that follow.



The given candlestick chart depicts the prices of a particular stock over 10 consecutive days. A candlestick comprises of a rectangular box pieced by a line. The top and bottom ends of the line respectively indicate the maximum and minimum prices of the stock on that day, while the horizontal edges of the rectangle correspond to the stock's opening and closing prices. If the rectangle is white, the opening price is lower than the closing price, but if the rectangle is black, then it is the other way around.

Using the above information, answer the questions that follow:

SubQuestion No : 9

Q.9 On which day is the ratio of the maximum price to the opening price, the highest across the ten days?

- Ans A. Day 1
 B. Day 3
 C. Day 9
 D. Day 4
 E. Day 10

Question ID : 6302611385

Status : Answered

Chosen Option : E

Q.10 Wilma, Xavier, Yaska and Zakir are four young friends, who have a passion for integers. One day, each of them selects one integer and writes it on a wall. The writing on the wall shows that Xavier and Zakir picked positive integers, Yaska picked a negative one, while Wilma's integer is either negative, zero or positive. If their integers are denoted by the first letters of their respective names, the following is true:

$$W^4 + X^3 + Y^2 + Z \leq 4$$

$$X^3 + Z \geq 2$$

$$W^4 + Y^2 \leq 2$$

$$Y^2 + Z \geq 3$$

Given the above, which of these can $W^2 + X^2 + Y^2 + Z^2$ possibly evaluate to?

- Ans A. 0
 B. 6
 C. 4
 D. 1
 E. 9

Question ID : 6302611371

Status : Answered

Chosen Option : B

Q.11 Shireen draws a circle in her courtyard. She then measures the circle's circumference and its diameter with her measuring tape and records them as two integers, A and B respectively. She finds that A and B are coprimes, that is, their greatest common divisor is 1. She also finds their ratio, A:B, to be: 3.141614161416... (repeating endlessly).

What is A – B ?

- Ans A. 7138
 B. 21413
 C. 21417
 D. 21414
 E. 15

Question ID : 6302611370

Status : Not Attempted and Marked For Review

Chosen Option : --

Comprehension:

Read the following scenario and answer the THREE questions that follow.

An examination had ten multiple choice questions, labelled Q1 to Q10 respectively. Each question had four answer options – A, B, C and D – of which one and only one was the correct answer. For each correct answer, the candidate obtained 1 mark. There were no negative marks for wrong answers. The answers chosen by six candidates named Om, Pavan, Qadir, Rakesh, Simranjeet and Tracey to each of the ten questions and the total marks obtained by each of them are shown in the table.

	Q1	Q2	Q3	Q4	Q5	Q6	Q7	Q8	Q9	Q10	Total Marks
Om	D	B	C	B	C	C	B	C	A	C	2
Pavan	D	B	A	B	B	D	A	C	B	D	5
Qadir	A	A	A	C	C	D	B	D	D	A	7
Rakesh	A	C	D	A	B	C	A	C	B	C	3
Simranjeet	D	B	A	B	C	C	A	D	B	A	7
Tracey	A	C	B	B	B	D	B	C	D	C	2

SubQuestion No : 12

Q.12 What is the correct answer for Q5?

- Ans A. A
 B. B
 C. Not possible to determine uniquely
 D. C
 E. D

Question ID : 6302611379

Status : **Not Attempted and
Marked For Review**

Chosen Option : --

Comprehension:

Read the following scenario and answer the THREE questions that follow.

An examination had ten multiple choice questions, labelled Q1 to Q10 respectively. Each question had four answer options – A, B, C and D – of which one and only one was the correct answer. For each correct answer, the candidate obtained 1 mark. There were no negative marks for wrong answers. The answers chosen by six candidates named Om, Pavan, Qadir, Rakesh, Simranjeet and Tracey to each of the ten questions and the total marks obtained by each of them are shown in the table.

	Q1	Q2	Q3	Q4	Q5	Q6	Q7	Q8	Q9	Q10	Total Marks
Om	D	B	C	B	C	C	B	C	A	C	2
Pavan	D	B	A	B	B	D	A	C	B	D	5
Qadir	A	A	A	C	C	D	B	D	D	A	7
Rakesh	A	C	D	A	B	C	A	C	B	C	3
Simranjeet	D	B	A	B	C	C	A	D	B	A	7
Tracey	A	C	B	B	B	D	B	C	D	C	2

SubQuestion No : 13

Q.13 For which of these questions is D the correct answer?

- Ans A. Both Q1 and Q9
 B. Both Q1 and Q8
 C. Q9
 D. Q1
 E. Q8

Question ID : 6302611380

Status : **Not Attempted and
Marked For Review**

Chosen Option : --

Comprehension:

Read the following scenario and answer the THREE questions that follow.

An examination had ten multiple choice questions, labelled Q1 to Q10 respectively. Each question had four answer options – A, B, C and D – of which one and only one was the correct answer. For each correct answer, the candidate obtained 1 mark. There were no negative marks for wrong answers. The answers chosen by six candidates named Om, Pavan, Qadir, Rakesh, Simranjeet and Tracey to each of the ten questions and the total marks obtained by each of them are shown in the table.

	Q1	Q2	Q3	Q4	Q5	Q6	Q7	Q8	Q9	Q10	Total Marks
Om	D	B	C	B	C	C	B	C	A	C	2
Pavan	D	B	A	B	B	D	A	C	B	D	5
Qadir	A	A	A	C	C	D	B	D	D	A	7
Rakesh	A	C	D	A	B	C	A	C	B	C	3
Simranjeet	D	B	A	B	C	C	A	D	B	A	7
Tracey	A	C	B	B	B	D	B	C	D	C	2

SubQuestion No : 14

Q.14 Which of these questions witnessed the least number of the students answering correctly?

- Ans A. Q5
 B. Q2
 C. Q10
 D. Q4
 E. Both Q3 and Q4

Question ID : 6302611381

Status : **Not Attempted and Marked For Review**

Chosen Option : --

Q.15 Fatima found that the profit earned by the Bala dosa stall today is a three-digit number. She also noticed that the middle digit is half of the leftmost digit, while the rightmost digit is three times the middle digit. She then randomly interchanged the digits and obtained a different number. This number was more than the original number by 198.

What was the middle digit of the profit amount?

- Ans A. 2
 B. 1
 C. 6
 D. This cannot be solved with only the given information
 E. 8

Question ID : 6302611369

Status : **Answered**

Chosen Option : A

Q.16 If both the sequences x, a_1, a_2, y and x, b_1, b_2, z are in A.P. and it is given that $y > x$ and $z < x$, then

which of the following values can $\{(a_1 - a_2)/(b_1 - b_2)\}$ possibly take?

- Ans
- A. 2
 - B. 0
 - C. -3
 - D. 5
 - E. 1

Question ID : 6302611368
Status : Answered
Chosen Option : C

Q.17 A tall tower has its base at point K. Three points A, B and C are located at distances of 4 metres, 8 metres and 16 metres respectively from K. The angles of elevation of the top of the tower from A and C are complementary.

What is the angle of elevation (in degrees) of the tower's top from B?

- Ans
- A. 30
 - B. We need more information to solve this.
 - C. 60
 - D. 45
 - E. 15

Question ID : 6302611364
Status : Answered
Chosen Option : A

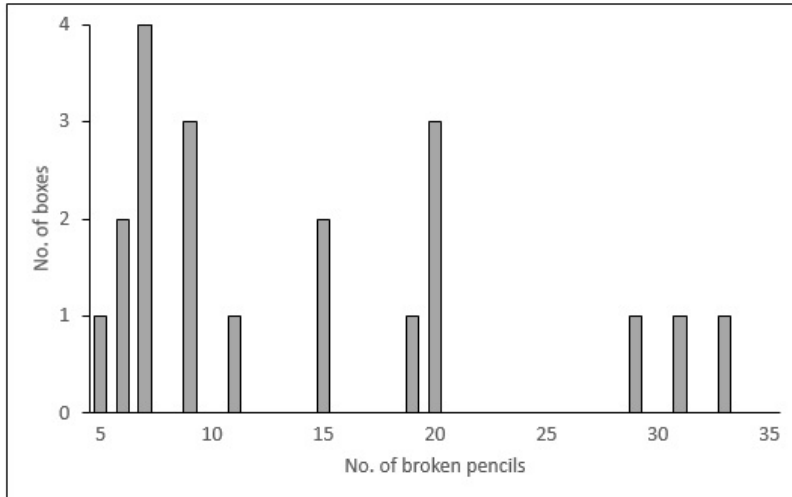
Comprehension:

Read the following scenario and answer the THREE questions that follow.

A pencil maker ships pencils in boxes of size 50, 100 and 200. Due to packaging issues, some pencils break. About the 20 boxes he has supplied to a shop, the following information is available:

- ❖ Box no. 1 through 6 have 50 pencils, Box no. 7 through 16 have 100 pencils and Box no. 17 through 20 have 200 pencils.
- ❖ No box has less than 5% or more than 20% broken pencils.

Following is the frequency table of the number of broken pencils for the twenty boxes:



SubQuestion No : 18

Q.18 Which of the following can possibly be the sequence of the number of broken pencils in Boxes 7-16?

- Ans A. 5,7,7,7,9,11,15,20,20,20
 B. 7,7,9,9,11,13,15,19,20,20
 C. 7,7,7,7,11,15,15,19,20,20
 D. 5,6,6,6,11,15,15,20,20,20
 E. 6,7,9, 11,15,19,20,20,20,29

Question ID : 6302611387

Status : Answered

Chosen Option : C

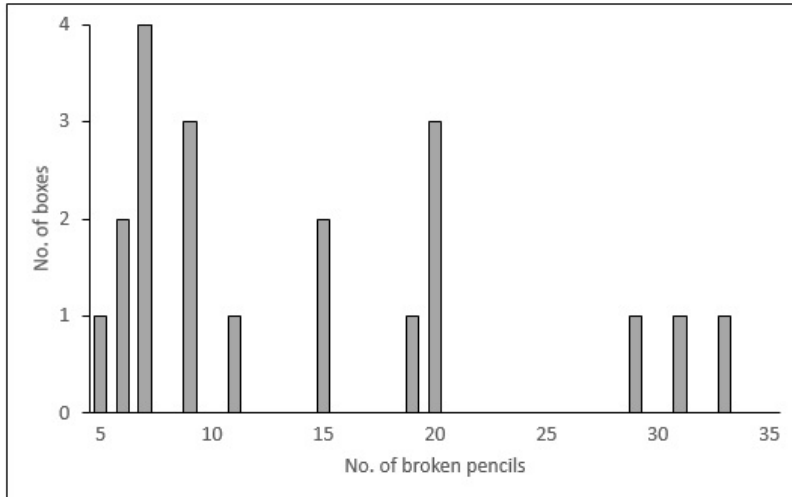
Comprehension:

Read the following scenario and answer the THREE questions that follow.

A pencil maker ships pencils in boxes of size 50, 100 and 200. Due to packaging issues, some pencils break. About the 20 boxes he has supplied to a shop, the following information is available:

- ❖ Box no. 1 through 6 have 50 pencils, Box no. 7 through 16 have 100 pencils and Box no. 17 through 20 have 200 pencils.
- ❖ No box has less than 5% or more than 20% broken pencils.

Following is the frequency table of the number of broken pencils for the twenty boxes:



SubQuestion No : 19

Q.19 Which of the following cannot be inferred conclusively from the given information?

- Ans** A. No box numbered 1-6 has more broken pencils than any box numbered 17-20.
- B. Three among the boxes numbered 17 to 20 have 29, 31 and 33 broken pencils in some order.
- C. Four among the boxes numbered 7 to 16 have less than 10 broken pencils.
- D. Exactly three boxes have 20% broken pencils.
- E. A box with the highest percentage of broken pencils has 100 pencils.

Question ID : 6302611388

Status : Answered

Chosen Option : D

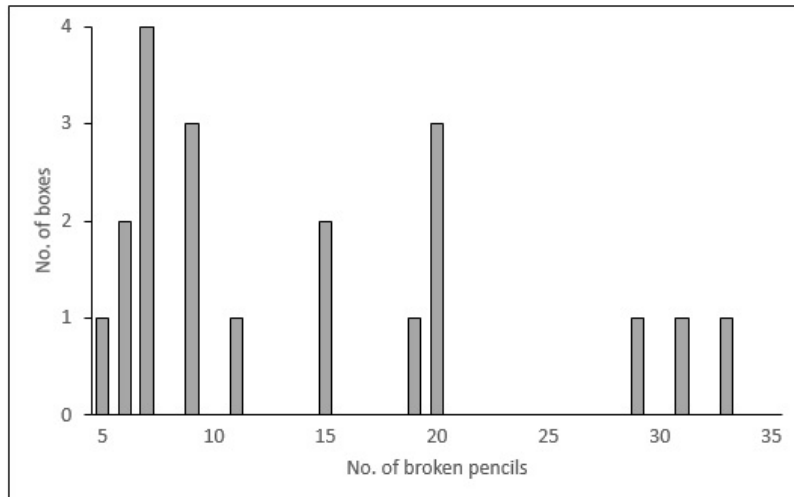
Comprehension:

Read the following scenario and answer the THREE questions that follow.

A pencil maker ships pencils in boxes of size 50, 100 and 200. Due to packaging issues, some pencils break. About the 20 boxes he has supplied to a shop, the following information is available:

- ❖ Box no. 1 through 6 have 50 pencils, Box no. 7 through 16 have 100 pencils and Box no. 17 through 20 have 200 pencils.
- ❖ No box has less than 5% or more than 20% broken pencils.

Following is the frequency table of the number of broken pencils for the twenty boxes:



SubQuestion No : 20

Q.20 Suppose that additionally it is known that the number of broken pencils in Boxes 17-20 are in an increasing order. Which among the following additional information, if true, is not sufficient to uniquely know the number of defective pencils in each of the boxes numbered 17-20?

- Ans
- A. Box no. 17 contains more defective pencils than any box from among boxes no. 1-14.
 - B. Boxes no. 17-20 contain a total of 108 defective pencils.
 - C. Boxes no. 7-16 contains a total of 124 defective pencils.
 - D. Boxes no. 11-16 contain a total of 101 defective pencils.
 - E. Boxes no. 7-16 contain a total of 133 defective pencils.

Question ID : 6302611389

Status : Answered

Chosen Option : C

Q.21 Kim's wristwatch always shows the correct time, including 'am' and 'pm'. Jim's watch is identical to Kim's watch in all aspects except its pace, which is slower than the pace of Kim's watch. At 12 noon on January 1st, Jim sets his watch to the correct time, but an hour later, it shows 12:57 pm. At 12 noon on the next June 1st, Jim resets his watch to the correct time.

On how many instances between, and including 12 noon on the two dates mentioned, do Jim's and Kim's watches show the exact same time, including the 'am' and the 'pm'?

- Ans
- A. 7
 - B. 17
 - C. 10
 - D. 9
 - E. 15

Question ID : 6302611372

Status : Answered

Chosen Option : D

Q.22

Consider the real-valued function $f(x) = \frac{\log(3x-7)}{\sqrt{2x^2-7x+6}}$.

Find the domain of f(x).

Ans

A. $(-\infty, \frac{7}{3})$

B. $R - (\frac{3}{2}, 2)$

C. $(\frac{7}{3}, \infty)$

D. $R - \{\frac{3}{2}, 2, \frac{7}{3}\}$

E. $R - \{\frac{7}{3}\}$

Question ID : 6302611367

Status : Answered

Chosen Option : C

Q.23 I have five 10-rupee notes, three 20-rupee notes and two 50-rupee notes in my wallet.

If three notes were taken out randomly and simultaneously, what is the probability that at least 90 rupees were taken out?

Ans

A. 1/15

B. 3/20

C. 7/60

D. 11/60

E. 1/20

Question ID : 6302611373

Status : Not Attempted and Marked For Review

Chosen Option : --

Q.24 The Madhura Fruits Company is packing four types of fruits into boxes. There are 126 oranges, 162 apples, 198 guavas and 306 pears. The fruits must be packed in such a way that a given box must have only one type of fruit and must contain the same number of fruit units as any other box.

What is the minimum number of boxes that must be used?

Ans

A. 21

B. 42

C. 36

D. 18

E. 44

Question ID : 6302611365

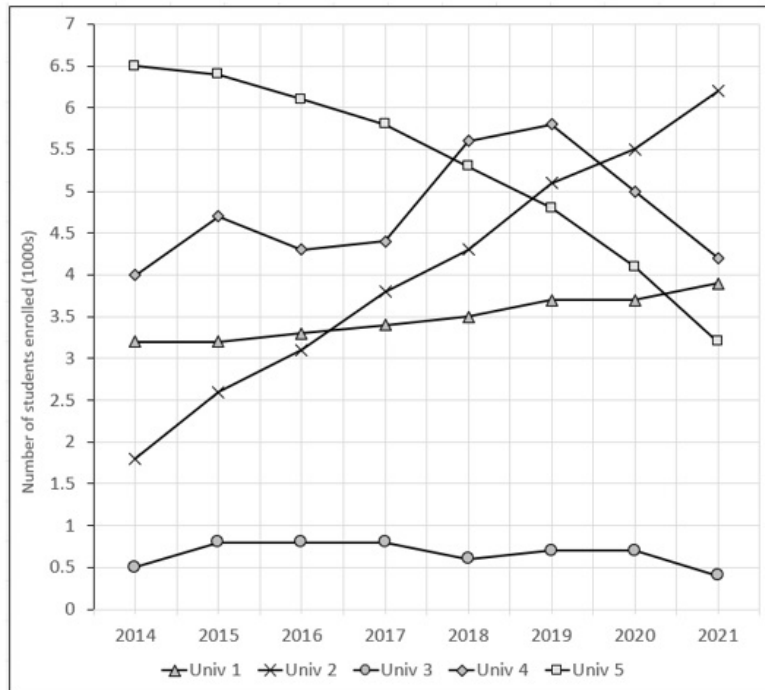
Status : Answered

Chosen Option : E

Comprehension:

Read the following scenario and answer the THREE questions that follow.

The enrolment of students (in 1000s) at each of the five universities named – MPU, JSU, LTU, PKU and TRU – during each of the eight years from 2014 to 2021 is represented in the following chart. The names of these universities are not shown in the chart, instead they are labelled Univ 1, Univ 2, Univ 3, Univ 4 and Univ 5.



However, these four pieces of information are available:

- W: The magnitudes of TRU's and MPU's net change in enrolment between 2014 and 2021 are the closest among any two universities.
- X: LTU had the same enrolment in consecutive years at least twice between 2014 and 2021.
- Y: The increase in JSU's enrolment from 2015 to 2019 is about 50% of TRU's total enrolment in 2020.
- Z: The enrolment in one of LTU and PKU had a steady decline between 2014 and 2021, while the enrolment in the other had no decline between any two consecutive years in the same period.

SubQuestion No : 25

Q.25 Which of the five universities can Univ 4 possibly be?

- Ans
- A. Only MPU
 - B. Either MPU or PKU
 - C. Either TRU or MPU
 - D. Only PKU
 - E. Only TRU

Question ID : 6302611375

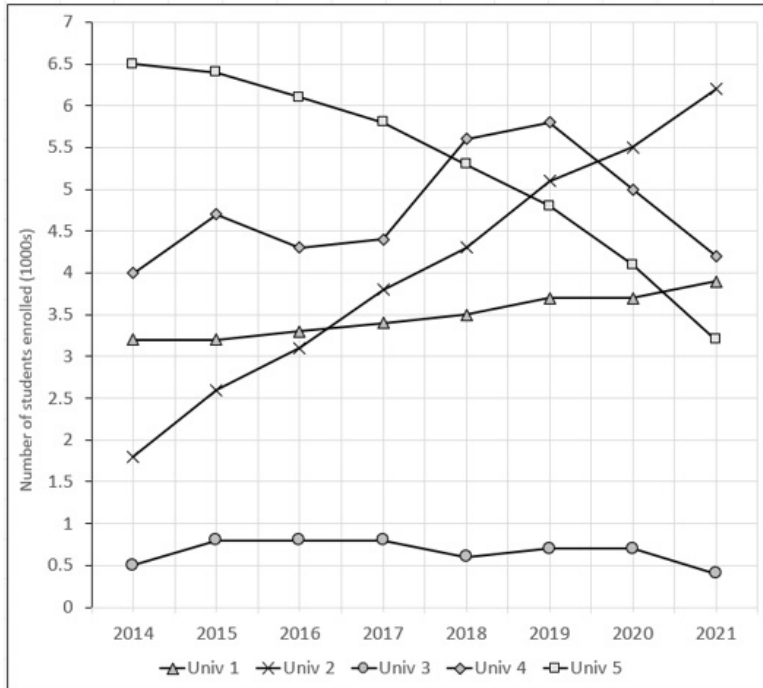
Status : Answered

Chosen Option : E

Comprehension:

Read the following scenario and answer the THREE questions that follow.

The enrolment of students (in 1000s) at each of the five universities named – MPU, JSU, LTU, PKU and TRU – during each of the eight years from 2014 to 2021 is represented in the following chart. The names of these universities are not shown in the chart, instead they are labelled Univ 1, Univ 2, Univ 3, Univ 4 and Univ 5.



However, these four pieces of information are available:

- W: The magnitudes of TRU's and MPU's net change in enrolment between 2014 and 2021 are the closest among any two universities.
- X: LTU had the same enrolment in consecutive years at least twice between 2014 and 2021.
- Y: The increase in JSU's enrolment from 2015 to 2019 is about 50% of TRU's total enrolment in 2020.
- Z: The enrolment in one of LTU and PKU had a steady decline between 2014 and 2021, while the enrolment in the other had no decline between any two consecutive years in the same period.

SubQuestion No : 26

Q.26 Which Univ's enrolment was around twice that of LTU in 2014?

- Ans
- A. Only MPU's
 - B. Only JSU's
 - C. Either JSU's or MPU's
 - D. Only PKU's
 - E. Either PKU's or TRU's

Question ID : 6302611376

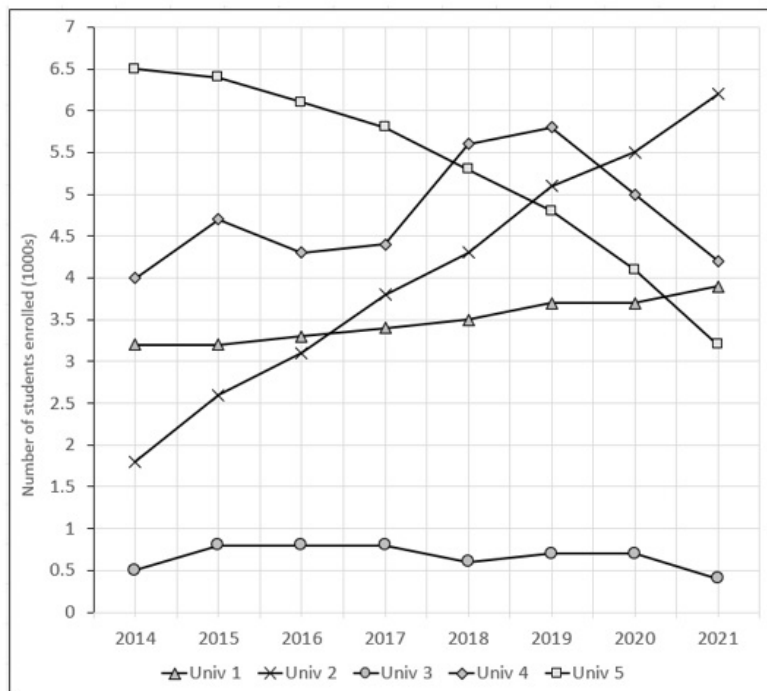
Status : Answered

Chosen Option : D

Comprehension:

Read the following scenario and answer the THREE questions that follow.

The enrolment of students (in 1000s) at each of the five universities named – MPU, JSU, LTU, PKU and TRU – during each of the eight years from 2014 to 2021 is represented in the following chart. The names of these universities are not shown in the chart, instead they are labelled Univ 1, Univ 2, Univ 3, Univ 4 and Univ 5.



However, these four pieces of information are available:

- W: The magnitudes of TRU's and MPU's net change in enrolment between 2014 and 2021 are the closest among any two universities.
- X: LTU had the same enrolment in consecutive years at least twice between 2014 and 2021.
- Y: The increase in JSU's enrolment from 2015 to 2019 is about 50% of TRU's total enrolment in 2020.
- Z: The enrolment in one of LTU and PKU had a steady decline between 2014 and 2021, while the enrolment in the other had no decline between any two consecutive years in the same period.

SubQuestion No : 27

Q.27 Which amongst the pieces of information mentioned below, if removed, will not prevent us from uniquely identifying the five universities?

- Ans A. X
- B. NONE, since all four pieces of information are necessary to uniquely identify the five universities.
- C. Either X or Y
- D. Y
- E. Z

Question ID : 6302611377

Status : Answered

Chosen Option : B

Q.28 Nadeem's age is a two-digit number X, squaring which yields a three-digit number, whose last digit is Y. Consider the statements below:

Statement I: Y is a prime number
Statement II: Y is one-third of X

To determine Nadeem's age uniquely:

- Ans A. only I is sufficient, but II is not.
 B. even taking I and II together is not sufficient.
 C. it is necessary and sufficient to take I and II together.
 D. only II is sufficient, but I is not.
 E. either of I and II, by itself, is sufficient.

Question ID : 6302611366
Status : Answered
Chosen Option : C

Section : General Knowledge

Q.1 Match the following books with their authors.

Books	Authors
P. The Fractured Himalaya: India Tibet China 1949-1962	I. Dinayar Patel
Q. False Allies: India's Maharajahs in the Age of Ravi Varma	II. Tamal Bandyopadhyay
R. VP Menon: The Unsung Architect of Modern India	III. Manu S Pillai
S. Pandemonium: The Great Indian Banking Tragedy	IV. Nirupama Menon Rao
T. Naoroji: Pioneer of Indian Nationalism	V. Narayani Basu

- Ans A. P-II, Q-V, R- I, S-IV, T-III
 B. P-V, Q-IV, R-I, S-III, T-II
 C. P-III, Q-V, R-I, S-II, T-IV
 D. P-II, Q-IV, R-I, S-V, T-III
 E. P-IV, Q-III, R-V, S-II, T-I

Question ID : 6302611402
Status : Answered
Chosen Option : A

Q.2 What is a grey market?

- Ans A. The trade of a commodity which is unbranded
 B. The trade of a commodity which is recognized as a counterfeit product
 C. The trade of a commodity for which the country of origin is not mentioned
 D. The trade of a commodity for which the taxes are evaded
 E. The trade of a commodity through distribution channels not authorized by the manufacturer

Question ID : 6302611411
Status : Answered
Chosen Option : B

Q.3 From which location, India test-fired the new generation Agni Prime missile in 2021?

- Ans A. Satish Dhawan Space Centre (Sriharikota), Andhra Pradesh
 B. Gan (Addu Atoll), Maldives
 C. Vikram Sarabhai Space Centre, Thiruvananthapuram (Thumba), Kerala
 D. APJ Abdul Kalam island, Odisha
 E. LAPAN Rocket Launcher Station, Pameungpeuk, Garut, Indonesia

Question ID : 6302611408
Status : Answered
Chosen Option : C

Q.4 Identify the XLRI alumna, who has recently been appointed as the Deputy National Security Advisor?

- Ans A. Parikshit Gautam
 B. Vikram Misri
 C. Arun Mani Dixit
 D. Parthapriya Ghosh
 E. S. Sathya Kumar

Question ID : 6302611412
Status : Answered
Chosen Option : D

Q.5 Match the following literary works with their authors.

Literary Works	Authors
P. Mrcchakatika	I. Kalidasa
Q. Mudrarakshasa	II. Shudraka
R. Abhijnanashakuntalam	III. Bāṇabhaṭṭa
S. Rasamanjari	IV. Vishakhadatta
T. Harshacharita	V. Krishnadevaraya

- Ans A. P-II, Q-V, R- I, S-IV, T-III
 B. P-III, Q-V, R-I, S-II, T-IV
 C. P-II, Q-IV, R-I, S-V, T-III
 D. P-V, Q-I, R-III, S-II, T-IV
 E. P-V, Q-IV, R-I, S-III, T-II

Question ID : 6302611392
Status : Answered
Chosen Option : C

Q.6 Match the following classic movies with their directors.

Movies	Directors
P. Agantuk	I. Adoor Gopalakrishnan
Q. Thaneer Thaneer	II. Shyam Benegal
R. Drohkaal	III. Satyajit Ray
S. Elipaththayam	IV. K Balachander
T. Bhumika	V. Govind Nihalani

- Ans**
- A. P-IV, Q-V, R-II, S-III, T-I
 - B. P-III, Q-IV, R-V, S-I, T-II
 - C. P-III, Q-I, R-V, S-IV, T-II
 - D. P-V, Q-I, R-II, S-III, T-IV
 - E. P-I, Q-IV, R- V, S-II, T-III

Question ID : **6302611409**
Status : **Answered**
Chosen Option : **B**

Q.7 Match the following districts with the states to which they belong.

Districts	States
P. Muktsar	I. Bihar
Q. Rohtas	II. Assam
R. Nanded	III. Tamil Nadu
S. Kamrup	IV. Punjab
T. Salem	V. Maharashtra

- Ans**
- A. P-V, Q-IV, R-I, S-III, T-II
 - B. P-III, Q-V, R-I, S-II, T-IV
 - C. P-IV, Q-III, R-V, S-II, T-I
 - D. P-IV, Q-I, R- V, S-II, T-III
 - E. P-II, Q-IV, R-I, S-V, T-III

Question ID : **6302611403**
Status : **Answered**
Chosen Option : **D**

Q.8 Which of the following 2018 Commonwealth Games Gold medallists has successfully contested the 2020 Bihar Legislative Assembly elections?

- Ans**
- A. Manu Bhaker
 - B. Tejaswini Samant
 - C. Heena Sidhu
 - D. Manika Batra
 - E. Shreyashi Singh

Question ID : **6302611413**
Status : **Answered**
Chosen Option : **B**

Q.9 Which of the following politicians has served for the longest years consecutively, or otherwise, as the Chief Minister of any Indian state or Union Territory?

- Ans A. Naveen Patnaik
 B. Virbhadra Singh
 C. Jyoti Basu
 D. Gegong Apang
 E. Pawan Kumar Chamling

Question ID : 6302611393
Status : Answered
Chosen Option : A

Q.10 Maitri and Bharati are the names of:

- Ans A. Indian diplomatic missions to Iceland
 B. Indian research stations in Antarctica
 C. Indian underwater missions in the North China Sea
 D. Indian research stations in Arctic
 E. Indian peace missions to Somalia

Question ID : 6302611391
Status : Answered
Chosen Option : C

Q.11 Which of the following footballing legends had never won the prestigious Ballon d'Or Award?

- Ans A. Luca Modric
 B. Ricardo Kaka
 C. Paolo Maldini
 D. Pavel Nedvěd
 E. Andriy Shevchenko

Question ID : 6302611405
Status : Answered
Chosen Option : A

Q.12 From the following options, choose the one which arranges the given Queens' ascension to the throne in a chronological order.

- Ans A. Razia Sultana, Ahilyabai Holkar, Durgavati, Lakshmi Bai, Rudrama Devi
 B. Ahilyabai Holkar, Durgavati, Razia Sultana, Rudrama Devi, Lakshmi Bai
 C. Razia Sultana, Rudrama Devi, Ahilyabai Holkar, Durgavati, Lakshmi Bai
 D. Rudrama Devi, Razia Sultana, Durgavati, Lakshmi Bai, Ahilyabai Holkar
 E. Razia Sultana, Rudrama Devi, Durgavati, Ahilyabai Holkar, Lakshmi Bai

Question ID : 6302611404
Status : Answered
Chosen Option : C

Q.13 Match the following UNESCO world heritage sites with the states to which they belong.

UNESCO World Heritage Sites	States
P. Khajuraho Group of Monuments	I. Telangana
Q. Kakatiya Rudreshwara Temple	II. Gujarat
R. Dholavira	III. Karnataka
S. Group of Monuments at Hampi	IV. Sikkim
T. Khangchendzonga National Park	V. Madhya Pradesh

Ans A. P-V, Q-I, R-II, S-III, T-IV

B. P-V, Q-IV, R-I, S-III, T-II

C. P-IV, Q-III, R-V, S-II, T-I

D. P-IV, Q-I, R- V, S-II, T-III

E. P-III, Q-V, R-I, S-II, T-IV

Question ID : 6302611407

Status : Answered

Chosen Option : A

Q.14 According to the venture capital industry, what is a unicorn?

Ans A. Any start-up that reaches to employ 1000 people

B. Any start-up that makes its owner a billionaire

C. Any start-up that raises \$1 billion in venture capital

D. Any start-up that reaches the valuation of \$1 billion

E. Any start-up that gives a dividend of \$1 billion to its shareholders

Question ID : 6302611398

Status : Answered

Chosen Option : D

Q.15 What is OSIRIS-REx?

Ans A. It is a new variant of the novel Coronavirus

B. It is the moon mission of JAXA

C. It is the name of the latest launch vehicle of ESA

D. It is a NASA asteroid-study mission

E. It is the last satellite launched by ISRO

Question ID : 6302611406

Status : Answered

Chosen Option : B

Q.16 Which of the following Indian states does not have an "Indian Institute of Technology (IIT)"?

Ans A. Punjab

B. Karnataka

C. Assam

D. Haryana

E. Chhattisgarh

Question ID : 6302611394

Status : Answered

Chosen Option : B

Q.17 Match the animals listed below with the most common collective noun used to represent a group of them (e.g. wolves – Pack).

Animals	Collective Nouns
P. Eagles	I. Tower
Q. Apes	II. Quiver
R. Giraffes	III. Kaleidoscope
S. Butterflies	IV. Shrewdness
T. Cobras	V. Convocation

- Ans
- A. P-II, Q-IV, R-I, S-V, T-III
 - B. P-II, Q-V, R- I, S-IV, T-III
 - C. P-V, Q-IV, R-I, S-III, T-II
 - D. P-III, Q-V, R-I, S-II, T-IV
 - E. P-V, Q-I, R-III, S-II, T-IV

Question ID : 6302611395
Status : Answered
Chosen Option : D

Q.18 Who is the first Field Marshal of independent India?

- Ans
- A. Sam Manekshaw
 - B. A.S. Vaidya
 - C. KM Cariappa
 - D. Krishnaswamy Sundarji
 - E. Bipin Rawat

Question ID : 6302611390
Status : Answered
Chosen Option : E

Q.19 What is the full form of NFT in the context of blockchain?

- Ans
- A. Non-fungible token
 - B. Non-functional tax
 - C. Non-fakable token
 - D. Non-fundable tax
 - E. Neo-fictitious token

Question ID : 6302611410
Status : Answered
Chosen Option : A

Q.20 Which of the following spacecrafts by the NASA entered the Sun's upper atmosphere – the Corona?

- Ans
- A. Luminous Solar Probe
 - B. Arka Solar Probe
 - C. Helios Solar Probe
 - D. Parker Solar Probe
 - E. James Webb Solar Probe

Question ID : 6302611414
Status : Answered
Chosen Option : C

Q.21 What is the Large Hadron Collider (LHC)?

- Ans
- A. The world's largest and most powerful electron beam
 - B. The world's largest and most powerful nuclear reactor
 - C. The world's largest and most powerful Aperture Spherical radio telescope
 - D. The world's largest and most powerful particle accelerator
 - E. The world's largest and most powerful water laser gun

Question ID : **6302611396**
Status : **Answered**
Chosen Option : **D**

Q.22 Which of the following wild animal has the sub-species as Sri Lankan, Indian, Sumatran and Bornean?

- Ans
- A. Rhinoceros (*Rhinoceros unicornis*)
 - B. Spotted Deer (*Axis axis*)
 - C. Tiger (*Panthera tigris*)
 - D. Asian Elephant (*Elephas maximus*)
 - E. Sarus Crane (*Antigone antigone*)

Question ID : **6302611397**
Status : **Answered**
Chosen Option : **D**

Q.23 Monosodium glutamate is:

- Ans
- A. Not found in any fruit or vegetable
 - B. The name of the company that makes Ajinomoto
 - C. Found in tomatoes
 - D. The reason one cries while peeling onions
 - E. A misnomer since it does not contain sodium

Question ID : **6302611401**
Status : **Answered**
Chosen Option : **D**

Q.24 Which of the following companies has acquired 100% stake in Air India?

- Ans
- A. Adani Group
 - B. Mahindra Group
 - C. Tata Group
 - D. Reliance Industries
 - E. Aditya Birla Group

Question ID : **6302611400**
Status : **Answered**
Chosen Option : **C**

Q.25 What is Zoonosis?

- Ans A. A disease which can be transmitted to humans from animals
- B. A disease which can be transmitted to humans from zoo animals
- C. The study of Oonosis
- D. A disease which can be transmitted to humans from zygotes
- E. A state of affairs where human behaviour imitates that of zoo animals

Question ID : 6302611399
Status : Answered
Chosen Option : E

Section : ESSAY 1

Q.1 Capitalism and democracy follow different paths: Unequally distributed property rights on the one hand, equal civic and political rights on the other; hierarchical decision making by managers and capital owners versus debate, compromise and majority decision-making within democratic politics. Therefore, they cannot co-exist.

Case Sensitivity: No

Answer :

Possible Answer: NA

Given --
Answer :

Question ID : 6302611415
Status : Not Answered

Section : ESSAY 2

Q.1 In management, we do not need people who never experienced a setback; such people are highly averse to taking risks. Because, business schools majorly focus on stellar academic achievements during admissions, the selected students often turn into average managers.

Case Sensitivity: No

Answer :

Possible Answer: NA

Given "Those blows which don't knock you down, make you rise up stronger than ever before" Setbacks are the best possible teacher for any person, but it is not true that those who don't face setbacks cannot come out to be great managers. Dealing with failure does make you ready to how to deal with the setbacks, but those people who haven't faced setbacks can also take risks. Let's take the example of a child who comes to the world, he/she is ready to take on the world, take risks which adults don't take or face hesitation in taking. Also, it is no assurity that they won't face setbacks in the future and it's not just the number of setbacks or magnitude of setbacks that should be taken into account, even one setback of small magnitude can give a lesson for a lifetime. So, although setbacks are important they are not the only criteria for turning out to be an average manager or good manager. And even those who doen

Question ID : 6302611416
Status : Answered