

# Crack CSIR-NET 2021 Through Mind Maps (Mind Map on Photosynthesis)



# PHOTOSYNTHESIS

Formation of glucose from CO<sub>2</sub> and water in presence of sunlight and chlorophyll

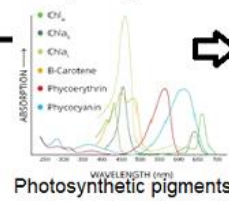
Factor affecting photosynthesis

**External factor:** light  
CO<sub>2</sub> Concentration,  
temperature, water, O<sub>2</sub>,  
etc

**Internal factor:**  
chlorophyll,  
concentration, leafage,  
phytohormones, etc

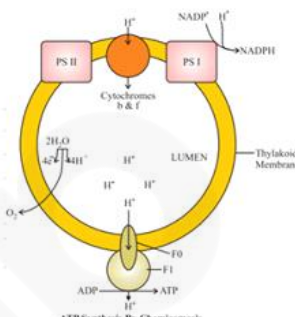
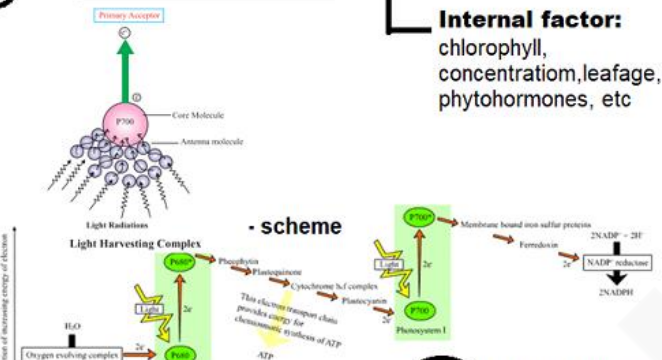
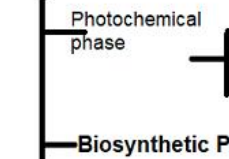


Site of photosynthesis



Photosynthetic pigments

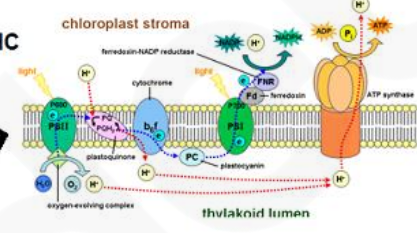
Photosynthetic mechanism



This hypothesis explain mechanism of ATP synthesis in chloroplast. In photosynthesis, ATP synthesis is linked to development of a proton gradient across membrane. The protons are accumulated inside of membrane of thylakoids. ATPase enzyme has a channel of that allow diffusion of protons back across the membrane, energy to activate ATPase enzyme that catalyses the formation of ATP.

**PS II** Includes P600 as photocentre and LHC

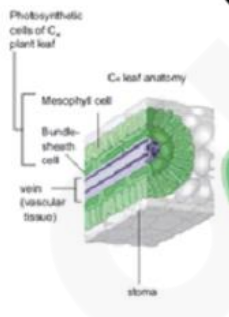
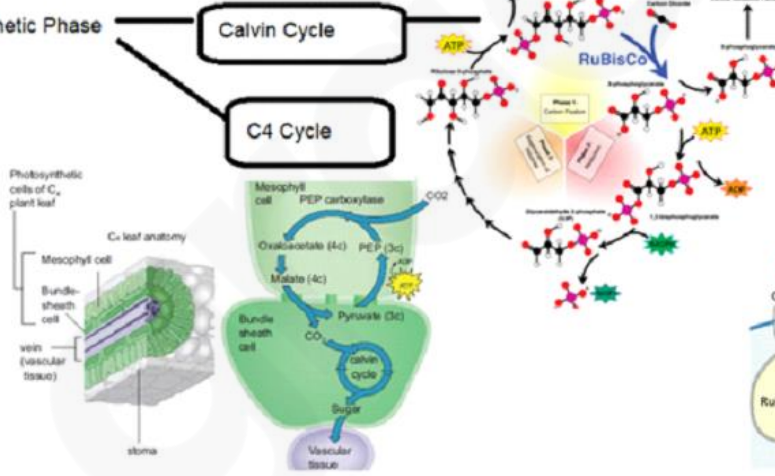
**PS I** Includes P700 as photocentre and LHC with electron carriers



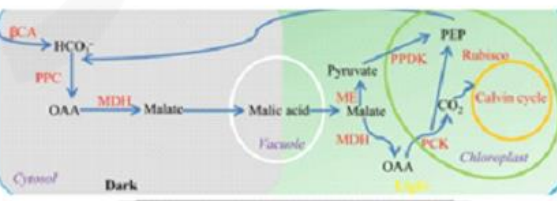
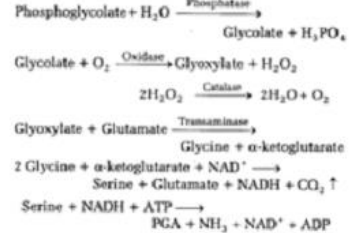
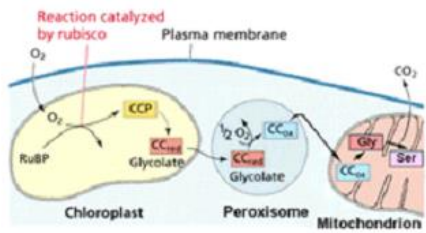
## Biosynthetic Phase

Calvin Cycle

C4 Cycle



## Photorespiration



**CAM (Crassulacean Acid Metabolism)**



# Gradeup CSIR-NET Super Subscription

## Features:

1. Memory Based Test Series of the actual exam paper.
2. All the CSIR NET Test Series based on the latest pattern and the trend that is followed.
3. Detailed performance analysis based on All India Rank after the completion of the test.
4. Mock Test are available in Hindi & English
5. Available on Mobile and Desktop

-----  
**Gradeup Super Subscription, Enroll Now**

