

IBPS RRB Officer Scale-1 Main 2020

Previous Year Solved Papers (in English)



Direction: In the question below are given four statements followed by three conclusions numbered I, II and III. You have to take the given statements to be true even if they seem to be at variance with commonly known facts. Read all the conclusions and then decide which of the given conclusions logically follows from the given statements disregarding commonly known facts.

1.

Statements:

Only a few Stupid are Crazy.
No Crazy are Smart.
All Smart are Beautiful.
Only a few Beautiful are Handsome.

Conclusions:

- I. Some Stupid are not Smart.
II. No Smart are Handsome.
III. All Handsome being Stupid is a possibility.
A. Only I follows
B. Only II follows
C. Only III follows
D. Both II and III follow
E. Both I and III follow

2.**Statements:**

No Perfumes are Deodorants.
Only a few Deodorants are Moisturizers.
All Moisturizers are Cold Creams.
Only a few Cold Creams are Sunscreen.

Conclusions:

- I. Some Deodorants are Sunscreen.
II. All Perfumes being Sunscreen is a possibility.
III. No Moisturizers are Perfumes.
A. Only I follows
B. Only II follows
C. Only III follows
D. Both II and III follow
E. None follows

3.**Statements:**

All Lamps are Lights.
Only a few Lights are Bulbs.

Only a few Bulbs are Tubelights.
No Tubelights are CFL.

Conclusions:

- I. No Lamps are Tubelights.
II. Some CFL are not Bulbs.
III. Some Lights are not Bulbs.
A. Only I follows
B. Only II follows
C. Only III follows
D. Both II and III follow
E. None follows

Direction: Study the following data carefully and answer the questions accordingly.

A certain number of people are sitting in a straight line facing the south direction. Seven people sit between M and Z. Five people sit between Z and P. More than two people sit between T and S. Q sits fifth from an end. At most two people sit to the left of P. Three people sit between S and P, who is not an immediate neighbor of Q. Four people sit between S and Q. T sits second to the right of Q.

4.

How many people are sitting in this arrangement?

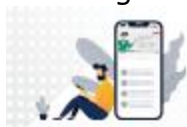
- A. 17
B. 15
C. 16
D. 19
E. None of these

5. Who sits second to the left of Z?

- A. P
B. T
C. Q
D. S
E. None of these

6. How many people sit to the left of S?

- A. Five
B. Six
C. One
D. Four



**IBPS RRB PO/Clerk
2021 Course (Batch 4)**

START FREE TRIAL

E. None of these

7. What is the position of M?

- A. Fifth to the left of S
- B. Second from the right end
- C. At one of the end
- D. Third to the left of P
- E. None of these

Direction: A word and number arrangement machine, when given an input line of words and numbers, rearranges it in every step following a certain rule. Following is an illustration of an input line of words & numbers and various steps of rearrangement.

Input: Cloudy Amazing August English Under

Step 1: Amazing English Under August Cloudy

Step 2: English Amazing Cloudy August Under

Step 3: Clntdy dnglsh tnddr zmzzhng ztgtst

Step 4: 56 24 76 66 92

And step IV is the last step for this input. Now, find out appropriate answers in the following questions following the above rules.

Input: Promotion After Immediately Riverdale Fantastic

8.

Which of the following would be the last but one step of the given input?

- A. Zftdr Fzntzsthc hmmddhztdly prnmnthnn hrvdrdzld
- B. Gzntzsthc hmmddhztdly prmmntmn rhvdrdzld zftdr
- C. Fzntzsthc hmmddhztdly prnmnthnn rhvdrdzld zftdr
- D. Prmmntmn Fzntzsthc hmmddhztdly hrvdrdzld zftdr
- E. None of these

9. How many numbers are divisible by 11 in the last step of the given input?

- A. None
- B. Two
- C. Three
- D. One
- E. None of these

10. In step 2, which of the following words would be at the 4th position from the right end?

- A. Fantastic
- B. Immediately
- C. Promotion
- D. After
- E. Riverdale

11. In step 3, which of the following words would be at 3rd position from the left?

- A. prnmnthnn
- B. prnnnmthn
- C. fmmddhztdly
- D. zftdr
- E. None of these

Direction: Study the following data carefully and answer the questions accordingly.

"Almost result for decide" is coded as "VF#9 IH@26 GT#38 GC#21"

"its total now stopped" is coded as "WU@23 DP@37 OV@32 HK@28 "

"projection for better furniture" is coded as "MR#30 IH@24 ID#20 VH@11"

"trust again this information" is coded as " MK@23 HV#39 GV@40 MC@15" 12.

What is the possible code for 'system'?

- A. NT@26
- B. UM#18
- C. TG@28
- D. NU#32
- E. None of these

13. What could be the code for 'random movie'?



**IBPS RRB PO/Clerk
2021 Course (Batch 4)**

START FREE TRIAL

- A. TN@19, CV#22
- B. MU@23, ZS#22
- C. NT#31, VO@18
- D. TO#29, XU@24
- E. Cannot be determined

14. What is the code for 'tickets booking'?

- A. RH#32, JK#9
- B. JH@36, DR@5
- C. HV@39, TD@9
- D. VH#32, ER#22
- E. None of these

Direction: Read the following information carefully to answer the questions based on it.

Nine persons A, B, C, D, E, F, G, H and J are sitting in a straight line facing the north, not necessarily in the same order. Each one of them likes a different color viz. Pink, Yellow, Green, Blue, Red, Black, Brown, White and Violet, not necessarily in the same order.

Note: The leftmost place from the left end is positioned 1 (Vice-versa) and so on.

H sits on an even position from the left end and the one who likes blue sits on the leftmost place. Two persons sit between G and E. D who likes green sits on the 2nd position from the right end. The one, who likes yellow, sits just to the left of the one who likes white. C doesn't like yellow. The one who likes pink sits exactly between the one who likes brown and the one who likes red, but not on the 5th position from the left end. J likes violet. G sits on the 3rd position from the left end. B sits on an even position from the left end and A sits on an odd position from the left end but not on the leftmost position. The one who likes brown sits on the 4th position from the left end but B doesn't like brown. A does not sit on the 5th position from the left end. The one

who likes black does not sit at the rightmost position. The one who likes white sits on the 6th position from the left end.

15. Who among the following sits on the leftmost position?

- A. F
- B. C
- C. E
- D. J
- E. None of these

16. How many persons are sitting between the one who likes red and A?

- A. None
- B. Two
- C. Four
- D. Three
- E. None of these

17. Four of the following five are alike in a certain manner and hence form a group. Find the one who does not belong to that group?

- A. G
- B. D
- C. J
- D. C
- E. F

18. What is the position of F with respect to A?

- A. 3rd to the right
- B. 4th to the left
- C. 2nd to the right
- D. 4th to the right
- E. None of these

19. Which of the following statement is not true?

- A. A likes black.
- B. F sits exactly between A and G.
- C. The one who sits in the middle of the row sits just to the right of H.
- D. 5 persons sit between B and the one who likes violet.
- E. H sits second to the left of the one who likes white.



**IBPS RRB PO/Clerk
2021 Course (Batch 4)**

START FREE TRIAL

Direction: Read the following information carefully to give the answers of the questions.

20.

Which of the following should be placed in the blank spaces respectively makes the expression $S < R$ as well as $K \geq T$ definitely true?

S _ T _ A _ R _ K

- A. =, =, ≤, ≤
- B. <, ≤, =, <
- C. <, >, =, ≥
- D. <, =, =, ≤
- E. <, =, ≤, <

21. Which of the following symbols should be placed in the blank spaces respectively makes the expression $C < T$, $L < S$ and $O < H$ definitely false?

C _ L _ O _ T _ H _ S

- A. >, >, <, =, >
- B. >, =, =, <, <
- C. >, =, =, >, >
- D. <, =, =, ≤, <
- E. <, < =, >, =

Direction: Study the following data carefully and answer the questions accordingly.

22.

Which of the following symbol should replace the blank in the given expression to make the expression $F > E$ true?

$D = C > B \geq E \leq H _ G \leq F$

- A. =
- B. >
- C. ≤
- D. <
- E. ≥

Direction: In the question given below, a statement is given followed by three courses of action. A course of action is taken for improvement,

follow up, etc. Read the statement carefully and give your answer.

23.

Statement:

Facebook has been accused of sharing users' private data with smartphone manufacturers, including Huawei, Lenovo, and Oppo.

Courses of Action:

I. The regulatory should constitute a committee to investigate Facebook and demand an explanation as to why confidential information has been leaked.

II. Facebook users should avoid sharing private information because reports of the social networking giant leaking data have been on the rise.

III. Facebook should issue a written apology to all its users assuring them that private information shall never be leaked again.

- A. Only course of action I follows
- B. Only course of action II follows
- C. Both I and II follow
- D. Both II and III follow
- E. None of them follow

24. A UK court has issued an arrest warrant against fugitive diamond jeweler Nirav Modi, taking cognizance of the sanction granted by the UK home secretary on India's request to extradite the jeweler. According to the procedure, Modi will be formally arrested and is likely to be enlarged on bail. The London Police is likely to arrest him and produce him before a London Court, said sources privy to the development.

Which of the following can be **logically inferred** from the above information?

I. The UK home office told the Indian authorities that India's request to extradite Modi had been certified. The



**IBPS RRB PO/Clerk
2021 Course (Batch 4)**

START FREE TRIAL

Indian agencies are now awaiting Modi's formal arrest.

II. Modi was spotted in London's West End earlier this month by Britain's The Telegraph newspaper, which reported that he's running a new diamond business in the city. India is also pursuing extradition proceedings against Modi's uncle and co-accused Mehul Choksi, currently in Antigua.

III. The Indian agencies have told the British authorities that Modi had traveled outside the UK despite his passport having been revoked. This was despite repeated reminders sent to the British authorities.

- A. Only I follows
- B. None can be inferred.
- C. Only II follows
- D. Both II and III follow
- E. All can be inferred.

Direction: You have to decide which of the arguments is/are 'strong' arguments and which is/are 'weak' arguments and accordingly choose your answer from the alternatives given below each question.

25.

Statement:

India has proposed regulating cross border data flows, locating computing facilities within India to ensure job creation and set up a dedicated 'data authority' for issues related to sharing of community data. In its draft National E-Commerce Policy, India has said that the data generated in the country is a national asset, and citizens and the government have a sovereign right over it.

Which of the following argument weaken(s) the above statement in the best possible manner?

Arguments:

I. The policy ensures that "sensitive" data is to be collected and processed

here but does not prevent the data stored abroad from being shared with foreign governments and other business entities outside India.

II. As per the policy, by not imposing restrictions on cross-border data flow, India would itself be shutting the doors for the creation of high-value digital products in the country.

III. It has suggested a three-year period for companies to set up data storage here and advocates a review of the current practice of not imposing customs duties on electronic transmissions.

- A. None is strong
- B. Both III and II are strong
- C. Only I are strong
- D. Only II is strong
- E. All are strong

Direction: Study the following information carefully and answer the following questions:

Seven boxes M, N, O, P, Q, R, and S are kept one above the another but not necessarily in the same order. Each box is of different weights 12 kg, 10 kg, 18 kg, 20 kg, 24 kg, and 5kg but not necessarily in the same order.

More than two boxes are kept above 12kg box. Only two boxes are kept between 20 kg and 12 kg box. Only one box is kept between 12kg box and box R, which is immediately below O. Neither O nor S is 20kg box. S is kept immediately above 5kg box. S is not 12 kg box. N is kept immediately above Q. Only one box is between N and 10 kg box which is below N. Only two boxes are kept between 10kg box and 8kg box. The 20 kg box is kept immediately below box M. The 18kg box is neither placed at the top nor at the bottom of the stack.

26.



**IBPS RRB PO/Clerk
2021 Course (Batch 4)**

START FREE TRIAL

What is the weight of the box which is placed in the middle of the stack?

- A. 18kg
- B. 10kg
- C. 20kg
- D. 12kg
- E. None of these

27. Weight of box N and Q is equal to the weight of which box?

- A. S, P
- B. S, N
- C. S, Q
- D. P, M
- E. None of these

28. How many boxes are kept above box O?

- A. 2
- B. 3
- C. 1
- D. No box
- E. None of these

29. Which box contains least weight?

- A. M
- B. O
- C. P
- D. Q
- E. R

30. Which of the following statement(s) is/are false regarding Q?

- A. Q is placed adjacent to both N and S
- B. Q weighs 12kg
- C. Q is placed in the middle of the stack
- D. All are false
- E. None of these

Direction: Study the following data carefully and answer the questions accordingly.

Raman starts walking from his home towards the north direction. After a distance of 20km, he takes a right

turn and walked 10km to reach a hospital. From here, he took a left turn and walked a distance of 12km to reach his friend Jai's house. Now, he took a left turn and walked a distance of 35km to reach a bakery shop. At last, he took two consecutive left turns and walked 12 km and 10 km respectively to reach his office.

31.

Jai's house is in which direction from Raman's office?

- A. South
- B. North-West
- C. South-west
- D. North-East
- E. None of these

32. Find the odd one.

- A. Raman's office, Bakery shop
- B. Hospital, Bakery shop
- C. Raman's office, Jai's house
- D. Raman's home, Raman's office
- E. Raman's home, Bakery shop

33. The Hospital is in which direction of Raman's office?

- A. East
- B. South
- C. North-West
- D. South-East
- E. Can't be determined

Direction: Read the given passage below and answer the questions.

Nigeria comprising of 36 states has just had its general election, it's sixth since its return to democracy. Incumbent President Muhammadu Buhari of the All Progressives Congress (APC). defeated his closest rival, Atiku Abubakar of the People's Democratic Party (PDP), by about four million votes. Despite pre-election promises of accepting the result, Mr. Abubakar has rejected the results, calling the election a "sham" and "militarised" and deciding to



**IBPS RRB PO/Clerk
2021 Course (Batch 4)**

START FREE TRIAL

question it in court. There were 73 registered candidates in the fray. There are 91 registered political parties. A coalition of more than 70 civic organisations monitored the elections, which enhanced the credibility of the elections.

34.

Which if the following is/are a possible course of action in lieu of the present situation?

A. Nigeria is of great interest to India, being its biggest trading partner. Over 135 Indian companies have a footprint in Nigeria, including the State Bank of India, New India Assurance and Mecon in the public sector and Bharti Airtel, Tata, Bajaj, Birla, Kirloskar and Mahindra in the private sector.

B. A federal republic with a presidential form of government, Nigeria has a bicameral National Assembly comprising the 109-member Senate and 360-member House of Representatives, both elected for four years.

C. Unlike India, counting is done in the polling stations, but the results are collated and declared at collation centres.

D. None of the above.

E. All of the above.

35. Which of the following is/are a possible inference that can be drawn from the information provided?

A. With a population of nearly 200 million, Nigeria is the most populous country in Africa, accounting for 47% of west Africa's population.

B. The country has 36 states (besides the Federal Capital Territory), each with an elected governor and a legislative assembly.

C. People's Democratic Party (PDP) defeated his closest rival, Atiku Abubakar of the All Progressives

Congress (APC) by about four million votes.

D. Despite the experience good elections in the past and assurances, the elections were fraught with all kinds of flaws.

E. With more than 70 civic organisations monitoring the elections, the allegations claimed by PDP won't stand long.

36. Which of the following is/are relevant according to the information provided in the above passage?

A. The elections were marred by sporadic incidents of violence before and on election day, besides destruction of voting materials, ballot-box snatching and bribing of voters.

B. None is relevant.

C. All are relevant.

D. Among the 91 political parties registered, PDP lost the election to ADP and made claims regarding the elections being militarised.

E. A coalition of less than 70 civic organisations monitored the elections, which enhanced the credibility of the elections.

Direction: Study the information given below and answer the questions based on it.

There are eight persons Chintu, Amra, Aayu, Archana, Kajal, Vicky, Kismat and Lakshya. They are born in different years – 1965, 1966, 1972, 1984, 1989, 1993, 1999, and 2002. Their ages are with respect to the year 2017.

There is a difference of 6 years between Vicky and Kismat. Kismat is younger than Vicky. Archana was born before 1984. Kajal is 15 years old. Aayu is not 24 years old and he was born after Lakshya. The age difference between Lakshya and Archana is a multiple of 3. Chintu, is



**IBPS RRB PO/Clerk
2021 Course (Batch 4)**

START FREE TRIAL

younger than Amra. Amra was born after Vicky.

37. Kismat was born in which year?

- A. 1965
- B. 1966
- C. 1972
- D. 1984
- E. None of these

38. Who is 28-year-old?

- A. Chintu
- B. Archana
- C. Amra
- D. Lakshya
- E. None of these

39. Find which of the following conditions is not true?

- A. 1999 - Aayu
- B. 1972 - Amra
- C. 1966 - Vicky
- D. 1993 - Chintu
- E. None of these

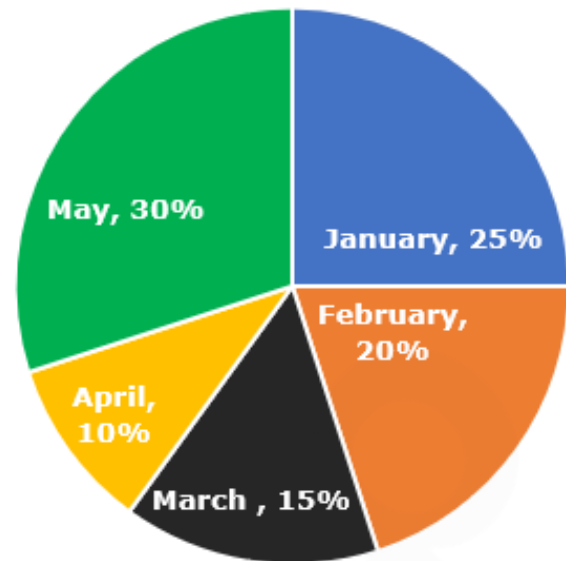
40. What is the age of Chintu?

- A. 45
- B. 28
- C. 17
- D. 33
- E. None of these

Direction: Study the pie-chart and table given below and answer the questions that follow.

The following pie-chart shows the percentage-distribution of the number of male candidates appearing for an interview in the months – January, February, March, April and May.

Total number of male candidates appearing for the interview in the given months = 80



In the following table, average of number of male candidates and number of female candidates appearing for the interview in the months – January, February, March, April and May.

Month	Average of candidates
January	25
February	18
March	15
April	16
May	20

41.

Total number of female candidates, who appeared for an interview in the month of June is 25% less than that in May and the number of female candidates, who appeared for an interview in the month of June is 24% of the total number of candidates, who appeared for an interview in the month of June, then how many male candidates appeared for an interview in the month of June?

- A. 24
- B. 30
- C. 36
- D. 38
- E. None of these



**IBPS RRB PO/Clerk
2021 Course (Batch 4)**

START FREE TRIAL

42. Total number of female candidates, who appeared for an interview in the month of April is what percentage more than that in the month of February?

- A. 20%
- B. 30%
- C. 15%
- D. 25%
- E. None of these

43. Find the average number of female candidates, who appeared for an interview in the month of January, March and April.

- A. 18
- B. 20
- C. 24
- D. 30
- E. None of these

44. What is the ratio of the sum of number of male candidates in February, March, April that appeared for interview and the sum of the number of female candidates in January and March that appeared for interview?

- A. 1 : 2
- B. 3 : 4
- C. 4 : 5
- D. 2 : 3
- E. 5 : 6

45. The number of female candidates that appeared for interview in May, the number of male candidates that appeared for interview in August and the number of female candidates that appeared for interview in August are in the ratio 4 : 7 : 10. What is the difference between the number of male and female candidates that appeared for interview in August?

- A. 20
- B. 16
- C. 14
- D. 12
- E. 10

46. All the candidates that appeared for the interview reached before their scheduled interview time in February. Average reaching time for the candidates before the interview was 45 minutes. If the average reaching time for female candidates before the interview was 52 minutes, what is the average reaching time for a male candidate before the interview?

- A. 34 minutes 30 seconds
- B. 35 minutes 45 seconds
- C. 36 minutes 15 seconds
- D. 37 minutes 30 seconds
- E. 38 minutes 45 seconds

Direction: What should come in place of the question mark '?' in the following number series?

47.

10000, 3000, 1800, 1620, ?

- A. 1458
- B. 972
- C. 1944
- D. 194.4
- E. None of these

48. 900, 896, 880, 844, 780, ?

- A. 720
- B. 680
- C. 640
- D. 630
- E. None of these

49. 64, 64, 160, 800, 6800, ?

- A. 68000
- B. 74800
- C. 81600
- D. 85000
- E. 88400

50. 13, 40, 168, 849, ?, 36131

- A. 4309
- B. 4784
- C. 5110
- D. 5158
- E. 5246



**IBPS RRB PO/Clerk
2021 Course (Batch 4)**

START FREE TRIAL

51. 9450, 3150, 787.5, 157.5, ?, 3.75
A. 62.25
B. 56.5
C. 39.375
D. 31.5
E. 26.25

52. When Rajiv's sister was born then age of his father was 28 years and age of his mother was 26 years. When Rajiv was born, his sister was 5 years old. What will be the sum of age of mother and father when Rajiv will become 15 years old?

- A. 70 years
- B. 80 years
- C. 90 years
- D. 94 years
- E. None of these

53. The ratio of the speed of train A to train B is 7 : 10. Train A crosses an electric pole in 8 seconds. Another train C which is 540 metres long can cross a pole in 12 seconds and speed of train C is half of the speed of train B. If the length of the train B is 144 metres less than the length of train A, find the length of train B.

- A. 420 metres
- B. 504 metres
- C. 360 metres
- D. 450 metres
- E. None of these

54. Three pipes A, B and C can fill a tank in 16 hours. After working together for 4 hours, pipe B is closed and the remaining part is filled by pipe A and C in 18 hours. If the efficiency of pipe B is 1.5 times of the efficiency of pipe C, then in how much time can pipe A fill the tank alone?

- A. 24 hours
- B. 36 hours
- C. 30 hours
- D. 42 hours
- E. None of these

55. A container contains 'A' litres of juice. If 60 litres of juice is taken out and 40 litres of water is added in the container, the ratio of the juice to water becomes 5 : 1. Another container contains (A + B) litres of juice and if 50 litres of water is added in that container, the ratio of juice to water becomes 6 : 1. Find the value of B.

- A. 50
- B. 60
- C. 25
- D. 40
- E. None of these

56. Shalini invested Rs. X in a scheme which offers 12% p.a. compound interest and she received total interest of Rs. 3816 after 2 years. If Ankur invested Rs. (X + 5000) in another scheme which offers 18% p.a. simple interest, what will be the interest on that investment after 3 years?

- A. Rs. 10800
- B. Rs. 12600
- C. Rs. 11200
- D. Rs. 12000
- E. None of these

57. The speed of a boat in still water is 250% more than the speed of stream. A boat covers D km in downstream and (D + 24) km in upstream in 12 hours. If the sum of the speed of boat in downstream and upstream is 84 km/h, find the time taken by boat to cover (D - 51) km in upstream.

- A. 4 hours
- B. 6 hours
- C. 4.2 hours
- D. 5.5 hours
- E. 4.5 hours

58. The ratio of the marked price of two rings A to B is 4 : 7. The shopkeeper gives two successive discounts of 16% and 10% on ring A



**IBPS RRB PO/Clerk
2021 Course (Batch 4)**

START FREE TRIAL

and two successive discounts of 20% and d% on ring B. If the ratio of the selling price of ring A to B is 9 : 16, find the value of d.

- A. 8
- B. 5
- C. 4
- D. 6
- E. None of these

Direction: Study the information given below carefully and answer the questions that follow:

3 buses going to Goa have seats in three different positions namely, aisle middle and window. A few of them are occupied and a few of them are vacant. Total seats in each position are 40.

Bus P: The number of vacant aisle seats are 20% of total number of seats. Only 50% of seats are occupied in the middle. The number of vacant

window seats are $\frac{2}{3}$ rd of total occupied seats in aisle and middle positions.

Bus Q: Number of vacant seats in the middle position is 10 more than the number of occupied aisle seats in Bus P. The number of occupied window seats are half of total vacant seats in Bus P. The number of occupied aisle seats are 12 more than number of vacant aisle seats.

Bus R: Total number of vacant seats are 37.5% of total number of seats. The Middle seats are 50% vacant.

Number of occupied Aisle seats is $\frac{2}{5}$ th of total occupied seats.

59.

What is the total number of occupied seats in all three buses together?

- A. 200
- B. 196
- C. 241
- D. 201

E. None of these

60.If one ticket of Goa costs Rs. 1500 for all buses. Find the revenue generated by Bus Q from this Goa trip.

- A. Rs. 123000
- B. Rs. 111000
- C. Rs. 116000
- D. Rs. 133000
- E. None of these

61.If for each vacant seat, company loses out on Rs. 800 then find the total loss suffered by the company.

- A. Rs. 125400
- B. Rs. 127200
- C. Rs. 132600
- D. Rs. 116600
- E. Rs. 128300

Direction: Study the information given below carefully and answer the questions that follow:

3 buses going to Goa have seats in three different positions namely, aisle middle and window. A few of them are occupied and a few of them are vacant. Total seats in each position are 40.

Bus P: The number of vacant aisle seats are 20% of total number of seats. Only 50% of seats are occupied in the middle. The number of vacant

window seats are $\frac{2}{3}$ rd of total occupied seats in aisle and middle positions.

Bus Q: Number of vacant seats in the middle position is 10 more than the number of occupied aisle seats in Bus P. The number of occupied window seats are half of total vacant seats in Bus P. The number of occupied aisle seats are 12 more than number of vacant aisle seats.

Bus R: Total number of vacant seats are 37.5% of total number of seats. The Middle seats are 50% vacant.



**IBPS RRB PO/Clerk
2021 Course (Batch 4)**

START FREE TRIAL

Number of occupied Aisle seats is $\frac{2}{5}$ th of total occupied seats.

62. If in Bus R, 40% of the seats were occupied by females. Out of those females, 40% were above the age of 25, then find the number of females below the age of 25 in Bus R.

- A. 24
- B. 16
- C. 20
- D. 18
- E. None of these

Direction: Study the information given below carefully and answer the questions that follow:

3 buses going to Goa have seats in three different positions namely, aisle middle and window. A few of them are occupied and a few of them are vacant. Total seats in each position are 40.

Bus P: The number of vacant aisle seats are 20% of total number of seats. Only 50% of seats are occupied in the middle. The number of vacant

window seats are $\frac{2}{3}$ rd of total occupied seats in aisle and middle positions.

Bus Q: Number of vacant seats in the middle position is 10 more than the number of occupied aisle seats in Bus P. The number of occupied window seats are half of total vacant seats in Bus P. The number of occupied aisle seats are 12 more than number of vacant aisle seats.

Bus R: Total number of vacant seats are 37.5% of total number of seats. The Middle seats are 50% vacant.

Number of occupied Aisle seats is $\frac{2}{5}$ th of total occupied seats.

63. The number of vacant seats in bus P is how much percentage more than that of vacant seats in Bus R?

- A. 55%
- B. 40%
- C. 60%
- D. 72%
- E. 42%

Direction: Each question given below is followed by two statements I and II. You have to determine whether the data given in the statements are sufficient to answer the question. You have to choose the best possible answer.

64.

A person invests Rs. X for 2 years at the rate of 4% p.a. Find the value of X.

Statement I: Amount received after two years is Rs. 135000.

Statement II: Interest received after 2 years is Rs. 10000.

- A. If the data in statement I alone is sufficient to answer the question, while the data in statement II alone is not sufficient to answer the question.
- B. If the data in statement II alone is sufficient to answer the question, while the data in statement I alone is not sufficient to answer the question.
- C. If the data either in statement I alone or in statement II alone is sufficient to answer the question.
- D. If the data in both statements I and II together are not sufficient to answer the question.
- E. If the data in both statements I and II together are necessary to answer the question.

Direction: Each question given below is followed by two statements I and II. You have to determine whether the data given in the statements are sufficient to answer the question. You have to choose the best possible answer.



**IBPS RRB PO/Clerk
2021 Course (Batch 4)**

START FREE TRIAL

65. Find the height of the cylinder.

Statement I: Radius of the cylinder is $\frac{1}{3}$ rd of its height.

Statement II: Curved surface area of the cylinder is 924 cm^2 and total surface area is 1232 cm^2 .

A. If the data in statement I alone is sufficient to answer the question, while the data in statement II alone is not sufficient to answer the question.

B. If the data in statement II alone is sufficient to answer the question, while the data in statement I alone is not sufficient to answer the question.

C. If the data either in statement I alone or in statement II alone is sufficient to answer the question.

D. If the data in both statements I and II together are not sufficient to answer the question.

E. If the data in both statements I and II together are necessary to answer the question.

66. Find the cost price of the product.

Statement I: The marked price of the product is 25% more than the cost price. After giving some discount, the profit earned is 12.5%.

Statement II: The selling price of the product is Rs. 450 after giving 10% discount on marked price.

A. If the data in statement I alone is sufficient to answer the question, while the data in statement II alone is not sufficient to answer the question.

B. If the data in statement II alone is sufficient to answer the question, while the data in statement I alone is not sufficient to answer the question.

C. If the data either in statement I alone or in statement II alone is sufficient to answer the question.

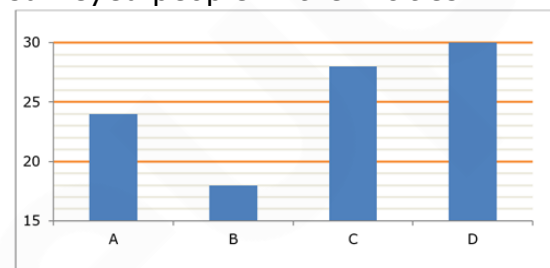
D. If the data in both statements I and II together are not sufficient to answer the question.

E. If the data in both statements I and II together are necessary to answer the question.

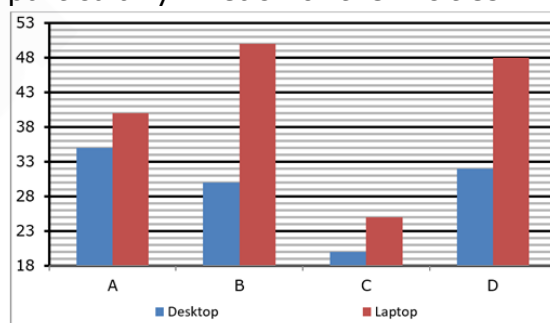
Direction: Study the following graphs carefully and answer the questions that follow:

A survey is conducted on 500 people asking them whether they use a laptop, desktop or Mac book in four different cities A, B, C and D

The bar-graph given below shows the percentage-distribution of the surveyed people in the 4 cities.



The bar-graph given below shows the percentage-distribution of the people who use Desktop or Laptop particularly in each of the 4 cities.



Total number of people in a city =
Number of people uses Desktop +
Number of people uses Laptop +
Number of people uses Mac book

67.

What is the average of the number of people who uses laptop in all 4 cities together?

A. 55

B. 60

C. 50

D. 48

E. None of these



**IBPS RRB PO/Clerk
2021 Course (Batch 4)**

START FREE TRIAL

68. The number of people who use Mac book in city A and B together is what percentage of the total number of people surveyed?

- A. 9.6%
- B. 12%
- C. 10.6%
- D. 15.5%
- E. None of these

69. If 25% of the number of people who use desktops in city C are females, then find the number of males who use desktops in city C.

- A. 20
- B. 18
- C. 24
- D. 21
- E. None of these

70. If out of the total users (surveyed) of desktop in city D, 25% use Dell, 37.5% use Lenovo and rest use HP, find the difference between the number of HP and Dell desktop users in city D.

- A. 10
- B. 6
- C. 15
- D. 8
- E. 12

71. What is the ratio of the total number of people surveyed in city B to the total number of people that use Mac book in city A and B together?

- A. 7 : 3
- B. 15 : 8
- C. 10 : 7
- D. 9 : 5
- E. None of these

72. The total number of people that use laptop and Mac book in city D together is how much percentage more or less than the total number of people surveyed in city A?

- A. 24%

- B. 20%
- C. 12%
- D. 15%
- E. None of these

73. Rajeev and Pankaj started a business with the capital of Rs. 12500 and Rs. 16000 respectively. After 4 months, Abhishek joined them with the capital of Rs. X. Out of the total profit, the profit share of Pankaj is Rs. 24000 and the profit share ratio of Rajeev to Abhishek is 25 : 24. Find the total profit.

- A. Rs. 62500
- B. Rs. 60750
- C. Rs. 58250
- D. Rs. 65400
- E. None of these

74. An article is sold at the profit of 50% after giving X% discount. If he had sold the article after giving 2X% discount, he would have earned $33\frac{1}{3}\%$ profit. Find the marked price of the article if the cost price of the article is Rs. 1500.

- A. Rs. 3000
- B. Rs. 2700
- C. Rs. 2500
- D. Rs. 2250
- E. None of these

75. Mohini spends 30% and 25% of her income on food and rent respectively. She spends 40% of the remaining income on education and thereby saves Rs. 3630, find the difference between the amount spent on Food and education.

- A. Rs. 880
- B. Rs. 940
- C. Rs. 1020
- D. Rs. 800
- E. None of these



**IBPS RRB PO/Clerk
2021 Course (Batch 4)**

START FREE TRIAL

76. The ratio of the length to breadth of a rectangle is 11 : 6. If the length is decreased by 2 m and breadth is increased by 6 m of the rectangle, the area becomes 1260 m², what is the perimeter of the original rectangle?

- A. 108 m
- B. 154 m
- C. 140 m
- D. 124 m
- E. None of these

77. The average age of five friends A, B, C, D and E is 54 years. If the age of another person F is also added, then average age of all six persons is 3 kg less than the average of the first five friends. Find the average age of A, C, D and F, if the average age of B and E is 48 years.

- A. 57.5 years
- B. 51 years
- C. 52.5 years
- D. 56 years
- E. None of these

78. Anant and Sahil can complete a work in 32 and 96 days respectively. If 25% of the work is completed by Chitra in (X - 6) days, and remaining work is completed by Anant and Sahil working together in X days, find the time it would have taken Sahil and Chitra to complete the work while working together.

- A. 30 days
- B. 36 days
- C. 24 days
- D. 32 days
- E. None of these

79. There are total 16 masks in a bag. Out of them 4 are green in colour, 5 are yellow in colour and 7 are white in colour. If three masks are picked randomly from the bag, then what is the probability that all the three masks are not of the same colour?

A. $\frac{69}{80}$

B. $\frac{73}{80}$

C. $\frac{71}{90}$

D. $\frac{64}{85}$

- E. None of these

80. Arun bought an article for Rs. 'x'. He spent Rs. 2250 on its transportation. He marked the article 80% above the total cost price of the article. If he sold the article after two consecutive discounts of 20% and 30% and made a profit of Rs. 744, then find the value of 'x'?

- A. Rs 90,750
- B. Rs 84,250
- C. Rs 92,350
- D. Rs 80,450
- E. Rs 72,550

81. What is the theme of the International Mountain Day 2020 celebrating every year on December 11 by United Nations?

- A. Mountain Biodiversity
- B. Mountains Matter
- C. Mountain minorities and indigenous peoples
- D. Managing mountain biodiversity for better lives
- E. Mountains Matter for Youth

82. What is the maximum limit for a loan under the Tarun scheme of Mudra Bank loan Yojana?

- A. Rs. 20 Lakhs
- B. Rs. 5 Lakhs
- C. Rs. 10 Lakhs
- D. Rs. 15 Lakh
- E. None of these

83. As per the new guidelines of the Reserve Bank of India for 'on tap'



**IBPS RRB PO/Clerk
2021 Course (Batch 4)**

START FREE TRIAL

Licensing of Small Finance Banks (SFBs) in the Private Sector what is the minimum paid-up capital for setting up an SFBs?

- A. 100 crore
- B. 150 crore
- C. 200 crore
- D. 250 crore
- E. 300 crore

84. Who has authored the book titled 'A Song of India'?

- A. VS Naipaul
- B. Ruskin Bond
- C. Alice Munro
- D. Salman Rushdie
- E. Arundhati Roy

85. The World Population Day is celebrated on-

- A. 8 January
- B. 10 February
- C. 16 March
- D. 11 July
- E. 12 December

86. Who has authored the book titled 'How to Be a Writer'?

- A. Ruskin Bond
- B. Shashi Tharoor
- C. Arundhati Roy
- D. Sudha Murthy
- E. Anand Neelakantan

87. Special Drawing Rights are the rights of countries provided by

- A. World Bank
- B. IMF
- C. Asian development Bank
- D. Federal Reserve
- E. None of these

88. What is the theme of Budget 2020-2021?

- A. Economic development
- B. Caring Society
- C. Aspirational India
- D. All of the above
- E. None of the above

89. What per cent of Foreign Direct Investment (FDI) has been decided by the union government in defence sector?

- A. 24 per cent
- B. 40 per cent
- C. 49 per cent
- D. 65 per cent
- E. 74 per cent

90. On which river bank Statue of Unity is built?

- A. Kosi
- B. Narmada
- C. Krishna
- D. Yamuna
- E. None of these

91. Who is the author of the book titled "Who will cry when you die"?

- A. Robin Sharma
- B. Ruskin Bond
- C. Shashi Tharoor
- D. Arundhati Roy
- E. Vikram Seth

92. What was the theme of the 2020 G20 Riyadh summit held in Riyadh, the capital city of Saudi Arabia?

- A. Global Sustainable Development
- B. Shaping an Inter-connected World
- C. Realizing Opportunities of the 21st Century For All
- D. Toward an Innovative, Invigorated, Interconnected and Inclusive World Economy
- E. Global Challenges: terrorism and the refugee Crisis

93. As per the RBI, what is the limit on collateral-free agriculture loans?

- A. 1.5 lakh
- B. 1.6 lakh
- C. 2.0 lakh
- D. 2.5 lakh
- E. 2.75 lakh



**IBPS RRB PO/Clerk
2021 Course (Batch 4)**

START FREE TRIAL

94. Which is the country's first small finance bank to get a license from the Reserve Bank of India in March 2016?

- A. AU Small Finance Bank
- B. Ujjivan Small Finance Bank
- C. Capital Small Finance Bank Limited
- D. Equitas Small Finance Bank
- E. Jana Small Finance Bank

95. WHO's global strategy towards eliminating cervical cancer aims to set the world on the right track by which year?

- A. 2022
- B. 2024
- C. 2026
- D. 2028
- E. 2030

96. Who was England's Cricket Team Captain in the 2019 Cricket World cup which took place in England?

- A. Eoin Morgan
- B. Joe Root
- C. Ben Stokes
- D. Jos Butler
- E. Jenson Roy

97. What was the name of the operation launched by the Indian Navy on Pakistan's port city of Karachi during the Indo-Pakistani War of 1971?

- A. Operation Vijay
- B. Operation Woodroser
- C. Operation Trident
- D. Operation Blue Star
- E. Operation Meghdoot

98. Which country is on top position in 'Digital Quality Life Index 2020'?

- A. Sweden
- B. Denmark
- C. United Kingdom
- D. France
- E. Japan

99. Allahabad Bank has been merged with which bank?

- A. Indian Bank
- B. Union Bank of India
- C. Punjab National Bank
- D. Bank of Baroda
- E. Canara Bank

100. What was the budget allocation in FY 2020-21 for the Defence sector?

- A. Rs 2,71,378 crore
- B. Rs 3,91,378 crore
- C. Rs 4,21,378 crore
- D. Rs 4,71,378 crore
- E. None of the above

101. CHAMPION portal is related with _____.

- A. MSMEs
- B. Building residential schools for rural students
- C. To upgrade the skills of teachers in the country
- D. Online platform for learning for research scholars
- E. None of the above

102. Which scheme among the options are not related to Education?

- A. Sarva Shiksha Abhiyan (SSA)
- B. PRASAD
- C. KIRAN
- D. Rashtriya Madhyamik Shiksha Abhiyan
- E. Mid day Meal

103. Which Institutions has developed an innovative virtual classroom aid titled 'Mobile Masterjee'?

- A. IIT Bombay
- B. IIT Kanpur
- C. IIT Delhi
- D. IIT Kharagpur
- E. IIT Madras

104. What amount has been allocated by the union government for agriculture and allied activities, irrigation and rural development in 2020-21 budget?



**IBPS RRB PO/Clerk
2021 Course (Batch 4)**

START FREE TRIAL

- A. 2.25 Lakh crore
- B. 2.45 Lakh crore
- C. 2.83 Lakh crore
- D. 2.90 Lakh crore
- E. 3.24 Lakh crore

105. The CHAMPIONS portal is related to which Sector was launched by Pradhan Mantri Narendra Modi?

- A. MSMEs
- B. New Startups
- C. Farmers
- D. Corporate World
- E. Banking Sectors

106. Which of the following statements is not true about the MGNREGA scheme?

- A. The Village Panchayat issues job cards to every individual in the village.
- B. It provides a legal guarantee for 100 days of employment
- C. The cost of the scheme is bearded by the center government only
- D. This scheme is applicable only in rural areas.
- E. It is Indian legislation enacted on August 25, 2005

107. What are the 2 Railway projects inaugurated by PM Narendra Modi virtually for the Eastern Dedicated Freight Corridor (EDFC)?

- A. Guwahati and Siliguri
- B. Chandigarh and Nagpur
- C. New Kharagpur and Asansol
- D. New Bhaupur and New Khurja section
- E. None of the above

108. Central Vigilance Commission sets up Advisory Board for Banking Frauds (ABBF) headed by T M Bhasin to examine bank fraud above _____ crore?

- A. 25 crore
- B. 50 crore
- C. 75 crore

- D. 100 crore
- E. 200 crore

109. As per the 'Policy on School Bag 2020' School bags should not be more than _____ of the body weight of students across classes I to X?

- A. 5%
- B. 10%
- C. 15%
- D. 20%
- E. 25%

110. What is the loan amount for 'PSB Loans in 59 minutes' scheme to meet the growing need of micro and small enterprises?

- A. Rs. 1 Lakh to Rs. 2 Crore
- B. Rs. 1 Lakh to Rs. 3 Crore
- C. Rs. 1 Lakh to Rs. 5 Crore
- D. Rs. 2 Lakh to Rs. 7 Crore
- E. Rs. 5 Lakh to Rs. 10 Crore

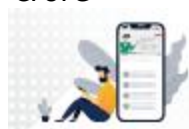
111. Which of the following borrowers is not included under the weaker section in the priority sector lending (PSL)?

- A. Self Help Groups
- B. Scheduled Castes and Scheduled Tribes
- C. Small and marginal farmers
- D. OBCs category as may be notified by Government of India from time to time
- E. Small and Marginal Farmers

112. Which department comes under Central Public Sector Enterprises (CPSE)?

- A. Department of Public Enterprises
- B. Department of Revenue
- C. Department of Border Management
- D. Department of Consumer Affairs
- E. Department of Defence Production

113. Which organisation released the National Strategy for Financial Education 2020-2025?



**IBPS RRB PO/Clerk
2021 Course (Batch 4)**

START FREE TRIAL

- A. NITI Aayog
- B. SEBI
- C. RBI
- D. CSO
- E. NSSO

114. Under the scheme of Pradhan Mantri Matsya Sampada Yojana (PMMSY) how much amount has been set to achieve the target of double fisheries exports by FY 2020-25?

- A. Rs. 25,000 Crores
- B. Rs. 50,000 Crores
- C. Rs. 70,000 Crores
- D. Rs. 90,000 Crores
- E. Rs. 1,00,000 Crores

115. Which technology is used in the arogya setu app to track the COVID-19 infection?

- A. Bluetooth and GPS services
- B. Near Field Communication Technology
- C. Radio Frequency Identification (RFID) technology
- D. Straight Through Processing technology
- E. Host Card Emulation (HCE) technology

116. Which institution has published an estimate based on high-frequency data which has been named as "nowcast"?

- A. Reserve Bank of India
- B. Central Statistical Organization
- C. National Sample Survey Organization
- D. Securities and Exchange Board of India
- E. NITI Aayog

117. Prime Minister Narendra Modi flagged off 1.5-km long, double stack container train on _____.

- A. Madar-Rewari link
- B. Iqbalgarh (Palanpur) – Vadodara
- C. Vadodara – Sachin
- D. Sachin - JNPT

E. None of the above

118. The development of education department is monitored by which international organization?

- A. UNDP
- B. UNEP
- C. UNICEF
- D. UNESCO
- E. UNSEC

119. Selling of government bonds come under _____.

- A. Revenue Department
- B. RBI
- C. SEBI
- D. NITI Aayog
- E. None of the above

120. Which has been designated as its nodal agency for the SAUBHAGYA scheme?

- A. New Delhi DISCOM
- B. Rural Electrification Corporation (REC)
- C. Department of Electricity, Ministry of Power
- D. Central Power Research Institute
- E. None of the above

Direction: Read the given passage carefully and answer the questions that follow. Certain words are printed in bold to help you locate them while answering some of these.

The enhanced risk caused by the rapid globalization of financial markets requires people to be adequately skilled to be able to make cognizant financial decisions. However, research conducted across the world indicates that financial illiteracy is prevalent even in well-developed financial markets like Germany, the Netherlands, Sweden, Japan, Italy, New Zealand, and the United States. Studies conducted in various countries across the world have shown that a significant



**IBPS RRB PO/Clerk
2021 Course (Batch 4)**

START FREE TRIAL

percentage of young adults were found to be "financially precarious" because they had poor financial literacy and lacked money management skills and income stability.

The role played by governments and employers in managing investments on behalf of individuals has shrunk significantly in the recent past as a result of changes in the social support structures across the world. This has increased individuals' responsibility in managing their own finances and securing their financial future. Given the fact that assortment and the **intricacy** of financial products are constantly growing, it is crucial for people to have a deeper understanding of financial products and services so that they can identify suitable investment avenues for themselves.

Reports on financial literacy from various countries across the world indicate that poor financial literacy has had a far-reaching and damaging impact on investment decisions made by individuals.

Such behaviour is also evident among youth, across nations. In India, there is an increasing trend of borrowing between the young population. According to the Reserve Bank of India (RBI) data on sectoral deployment of bank credit, personal loans, which include home, vehicle and education loans, accounted for a record 96 percent of incremental non-food credit in the last financial year. Most of the people availing personal loans are professionals in the age group of 25 - 45 years.

Source -
<http://bwpeople.businessworld.in/article/Importance-Of-Financial-Literacy-Among-Growing-Youngsters/27-07-2019-173839/#:~:text=Studies%20condu>

cted%20in%20various%20countries, management%20skills%20and%20in come%20stability

121.

The following segment from the passage carries some grammatical error(s). Choose the correct alternative from the given options. If the sentence is correct, mark the last option, "No correction required" as the answer.

"In India, there is an increasing trend of borrowing between the young population."

- A. In India, there is an increased trend of borrowing among the young population.
- B. In India, there is increase trend of borrowing between the young population.
- C. In India, there is an increasing trend of borrowing among the young population.
- D. In India, there is an increase in trend of borrowing across the young population.
- E. No correction required

122. Which of the following best expresses the opposite meaning of the word "intricacy" as used in the passage?

- I. Involution
- II. Simplicity
- III. Comprehensible
- A. Only I
- B. Only II
- C. Both I and III
- D. Both II and III
- E. Only III

123. Which of the following reasons have contributed towards the financial precariousness in young adults?

- I. Young adults do not have income stability which in turn means lower savings causing financial problems.



**IBPS RRB PO/Clerk
2021 Course** (Batch 4)

START FREE TRIAL

II. Most young adults have poor financial literacy which causes them to be unintelligible regarding financial issues.

III. Poor financial literacy in young adults results in poor money management skills.

- A. Only I
- B. Both I and II
- C. Only III
- D. Both II and III
- E. All I, II and III

124. Which of the following state the reasons behind why financial literacy is required in the modern world?

I. The modern world has seen the rise of complex financial products and services along with an independence from government and employer management of finances, which has led to the need for individual financial literacy.

II. The modern world offers more individual investment ventures than group investment opportunities which are often not regulated by the government meaning that they lack security and so it is necessary for one to be financially literate.

III. The modern world has more young adults than seniors which in turn means that the young generation often lack income stability and are always on the look out for quickly getting rich and so these young people should learn financial education.

- A. Only I
- B. Only II
- C. Only III
- D. Both I and II
- E. Both I and III

125. Which of the following is/ are true with reference to the given passage?

I. Rapid globalisation has led to the exposure about the financial illiteracy faced by the modern youth.

II. Professionals in India do not need to avail personal loans after the age of 30 as they acquire financial stability by that time.

III. While one can think that financial illiteracy is more prevalent in developing countries, but the truth is that it is affecting even the youth in developed countries.

- A. Only II
- B. Both I and III
- C. Only III
- D. Only I
- E. Both I and II

Direction: A statement with one blank is given below. Choose the set of words from the given options which can be used to fill the given blank.

126.

It was _____, and she was tired of waiting for the train to arrive.

- A. Get late
- B. Getting late
- C. Getting later
- D. Get later
- E. Had been getting late

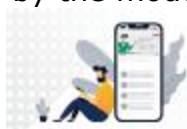
127. Enthralled by the performance, Ray _____ to personally _____ congratulate _____ the performers.

- A. Went backstage
- B. Got backstage
- C. Go backstage
- D. Will go backstage
- E. Had going

Direction: A statement with one blank is given below. Choose the set of words from the given options which can be used to fill the given blank.

128. The conversation was slowly but _____ controversial.

- A. Sure become
- B. Sure becoming
- C. Surety became
- D. Surely becoming
- E. Sure will become



**IBPS RRB PO/Clerk
2021 Course (Batch 4)**

START FREE TRIAL

129. He _____ in the middle of the night by a deep rumbling noise coming from the basement.

- A. Wake up
- B. Woken up
- C. Was aroused
- D. Was arose
- E. Waking up

Direction: In the following question, three statements have been given, and a phrase/idiom has been highlighted in each of them. Identify the statement(s) in which the phrase/idiom fits contextually to convey a logical meaning.

130. **Make no bones**

- I. Jon just fenced with his criticism and **made no bones** real attempt to answer it.
 - II. Angina's urgent pleas of innocence **made no bones** difference to the judge's decision.
 - III. Ashi **made no bones** about telling her husband that she wanted a divorce.
- A. Only I
 - B. Both I and II
 - C. Both I and III
 - D. Only III
 - E. All I, II, and III

131. **A stone's throw**

- I. The new team has achieved a great deal in **a stone's throw** time.
 - II. The bookstore is within **a stone's throw** of the school.
 - III. The driver dropped us in **a stone's throw** of a street which led to the entrance to the Taj.
- A. Only I
 - B. Only II
 - C. Both I and III
 - D. Both II and III
 - E. All I, II, and III

132. Have/ get one's (own) way

I. Samantha always has to have her own way when it comes to dividing responsibilities for group assignments.

II. She is very good at using her charm to get her way.

III. Make sure you get your way to the end of the hall.

- A. Only I
- B. Both I and II
- C. Both I and III
- D. Both II and III
- E. All I, II, and III

133. Fray at the edges

I. Without the unifying forces of the army and the monarchy, it seems, the nation would begin to fray at the edges.

II. It's a warning that a lockdown now visibly fraying at the edges is still in force for a reason, and that cool heads must prevail between Britain and the rest of Europe.

III. I couldn't believe my co-worker frayed at the edges in criticizing our boss' proposal.

- A. Only I
- B. Both I and II
- C. Both I and III
- D. Both II and III
- E. All I, II, and III

Direction: In the following questions, two columns I and II and three sentences are given, which are divided into two parts. Column I (A, B and C) consist of first half of each sentence and Column II (D, E and F) consists of second half of each sentence. Match column I with column II, so that the sentences formed are both meaningful and grammatically correct. Choose the option as your answer.

134.

I.

A). He resorted to shoddy workmanship



**IBPS RRB PO/Clerk
2021 Course (Batch 4)**

START FREE TRIAL

B). Such books are our great classics
C). Dry fruits are useful in various diseases

II.

D). the Ramayana and the Gita.
E). that effect the brain, muscles and tissues.
F). and used inferior material.

- A. B-E and C-F
- B. A-E, B-F and C-D
- C. A-F and B-D
- D. A-F
- E. A-E and C-F

135.

I.

A). Iron deficiency can lead to anaemia,
B). Alfred Hitchcock was greatly
C). Parents are our best friends, best
II.
D). guides and the best treasure.
E). influenced by American films and magazines.
F). energy with an excessive play drive.

- A. B-E and C-D
- B. A-E, B-F and C-F
- C. A-F and B-D
- D. A-F
- E. A-D and C-F

136.

I.

A). Our love for the country should be conditioned
B). There are books and books but
C). Almond preserves the vitality of the brain, strengthens the muscles,
II.
D). by respect for the whole community.
E). our hours of reading are very few.
F). destroys diseases originating from nervous and bilious disorders.

- A. B-D and C-E
- B. A-D, B-E and C-F
- C. A-F and B-D
- D. B-F

E. A-F and C-E

137.

I.

A). The Statue of Liberty was a gift from the people of France
B). Patriotism is an old concept,
C). Tea has antioxidants, that help prevent cell damage by

II.

D). that it gave one vigour of body, contentment of mind and determination of purpose.
E). to mark the one-hundred-year anniversary of American Independence.

F). harmful molecules called free radicals.

- A. A-D
- B. A-D, B-E and C-F
- C. A-F, B-E and C-D
- D. B-F
- E. A-E and C-F

Direction: The given question has a statement with three highlighted words/ phrases. Choose the most appropriate option from the given alternatives which can help replace the highlighted words to make the statement grammatically and logically correct. If the given sentence is correct as it is, mark 'no correction required' as the answer.

138.

Famous feminist psychology tends to **believe** gender issues that do not relate to traditional **benign** interest.

- A. Equal, effect, chronological
- B. Democracy, respect, mutual
- C. Modern, focus, philosophical
- D. Egalitarian, neglect, psychological
- E. No correction required

139.

One of nature's **medicinal** relaxing herbs, valerian helps put your mind **in** ease so you can rest and **revive**.

- A. Pronounced, of, energy



**IBPS RRB PO/Clerk
2021 Course (Batch 4)**

START FREE TRIAL

- B. Worst, over, relax
- C. Premier, at, rejuvenate
- D. Proven, for, climb
- E. No correction required

140.

The **review** of heterogeneous batch **disputation** process make it widely used in **separation** of azeotropic and low-volatility mixtures.

- A. Disadvantages, reconciliation, process
- B. Advantages, distillation, separation
- C. Privilege, disintegration, systems
- D. Definition, demonstration, bundling
- E. No correction required

Direction: Read the given passage carefully and answer the questions that follow. Certain words are printed in bold to help you locate them while answering some of these.

In the years 1991–1992 wide-ranging reforms were carried out in India, which were referred to as New Economic Policy. They were necessitated by the low economic and social effectiveness of the model called 'Indian socialism', which was adopted by the authorities at the birth of independence in India. It was characterised by excessive state intervention in the economy, particularly with regard to industry and foreign trade. The Indian economy was highly centralised and fraught with too much bureaucracy. It was based on central five-year economic plans. The private sector, which functioned pursuant to the rules of the free market, systematically shrunk and was highly dependent on the public sector. Furthermore, severe restrictions in international trade in commodities and capital resulted in cutting the Indian economy off from the rest of the world and thus depriving it of

access to technological and organisational progress.

The adoption of the aforementioned policy led to a sluggish rate of economic growth and a slow pace of social change. In the years 1947–1991 GDP grew at the rate of 3–4% annually, which was significantly lower than in most capitalist and socialist countries. This resulted in India's diminishing share in the global and Asian economies. In 1950 the GDP of India accounted for 23% of the GDP of Asia, whereas in 1985 India's share in the GDP of Asia amounted to merely 12% (Bywalec 2010).

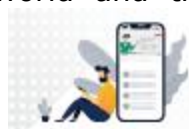
The economic reforms carried out in the years 1991–1992 consisted in wide-ranging liberalisation and deregulation of the Indian economy. Along with the shift in the economic model, the decentralisation of state was launched, i.e., democratic local self-government _____(A)_____.

The economic and political reforms brought about a rapid acceleration in economic growth and beneficial social changes, which were reflected in an improvement in the standard of living of the Indian society. In the years 1991–2015, India was overtaken only by China in terms of the economic growth dynamics. At the beginning of the second decade of the 21st century India ranked third in the world in terms of GDP (based on purchasing power parity) after the USA and China.

Source

https://www.researchgate.net/publication/314651526_The_Social_Effects_Of_The_Economic_Transformation_In_India_An_Attempt_At_Measurement_and_Evaluation

141.



**IBPS RRB PO/Clerk
2021 Course** (Batch 4)

START FREE TRIAL

Which of the following describes the central theme of the passage correctly?

- A. The economic reform in India and its effects.
- B. The improvement of the Indian Economy under the New Economic Policy.
- C. The failure of India's socialism.
- D. The post-independence economic scenario in India.
- E. None of the above

142. Which of the given options can be used to complete the blank labelled (A) in the most appropriate way, contextually and grammatically?

- A. was introduced
- B. was beginning
- C. came into existence
- D. Both A and B
- E. Both A and C

143. Which of the following statements correctly summarizes why Indian socialism is considered a failure by the author?

- I. The central nature of the Indian economic system under Indian socialism resulted in excessive red tape and bureaucracy which delayed implementation of proper and profitable financial plans.
 - II. Dependence of the private sector on the public sector under socialism lessened profits as free market was unavailable.
 - III. Socialism resulted in giving India free access to the international markets to garner knowledge but without the ability to sell goods which led to stagnation of the economy.
- A. Only III
 - B. Both I and II
 - C. Only I
 - D. Only II
 - E. None of the above.

144. Which of the following statements is false with respect to the given passage?

- A. In spite of the new economic policy, India continues to rely on the Centre's Five-Year Plans.
- B. There was a marked decrease in India's share of GDP in Asia between 1950 and 1985
- C. Liberalisation and deregulation were the key aspects of the New Economic Policy.
- D. The Indian standard of living has been exponentially increased because of the New Economic Policy.
- E. None of the above

145. Which of the following correctly describes the tone of the passage?

- A. Animated
- B. Benevolent
- C. Objective
- D. Apologetic
- E. Dogmatic

Direction: In the following passage, there are blanks, each of which has been numbered. These numbers are printed below the passage and against each, five words are suggested, one of which fits the blank appropriately.

Many people (###Q1###) vaccine efficacy to mean the percentage of people who would not get the disease after vaccination. Sometimes, it is also interpreted as the percent of possibility that a vaccinated person would be protected from the disease. However, it is not as straightforward. To understand vaccine (###Q2###), one has to first know a little bit about randomised controlled trials, a type of research design, commonly used for clinical trials – in this case, for Covid-19 vaccines. In RCTs, the study participants are randomly assigned into two comparable groups. In one,



**IBPS RRB PO/Clerk
2021 Course (Batch 4)**

START FREE TRIAL

the experimental group, the actual vaccine is (###Q3###). The other, the control group, gets a (###Q4###) – a neutral, unharmful substance that is not a vaccine. The process takes place in optimal conditions, which means that it occurs in an environment that is scientifically controlled and is similar for both experimental and control groups. If the outcome in the experimental group, in (###Q5###) terms, is significantly better than the outcome in the control group, the vaccine would be called efficacious.

146.

Find out the appropriate word in each case.

- A. transcribe
- B. interpret
- C. resolve
- D. falsify
- E. misconstrue

Direction: In the following passage, there are blanks, each of which has been numbered. These numbers are printed below the passage and against each, five words are suggested, one of which fits the blank appropriately.

Many people (###Q1###) vaccine efficacy to mean the percentage of people who would not get the disease after vaccination. Sometimes, it is also interpreted as the percent of possibility that a vaccinated person would be protected from the disease. However, it is not as straightforward. To understand vaccine (###Q2###), one has to first know a little bit about randomised controlled trials, a type of research design, commonly used for clinical trials – in this case, for Covid-19 vaccines. In RCTs, the study participants are randomly assigned

into two comparable groups. In one, the experimental group, the actual vaccine is (###Q3###). The other, the control group, gets a (###Q4###) – a neutral, unharmful substance that is not a vaccine. The process takes place in optimal conditions, which means that it occurs in an environment that is scientifically controlled and is similar for both experimental and control groups. If the outcome in the experimental group, in (###Q5###) terms, is significantly better than the outcome in the control group, the vaccine would be called efficacious.

147. Find out the appropriate word in each case.

- A. effect
- B. affect
- C. ergonomics
- D. efficacy
- E. affinity

148. Find out the appropriate word in each case.

- A. distributed
- B. revealed
- C. directed
- D. regulated
- E. administered

149. Find out the appropriate word in each case.

- A. placebo
- B. gazebo
- C. dummy
- D. nocebo
- E. prototype

150. Find out the appropriate word in each case.

- A. assumed
- B. critical
- C. statistical
- D. potential
- E. absolute



**IBPS RRB PO/Clerk
2021 Course (Batch 4)**

START FREE TRIAL

Direction: Read the sentence to find out whether there is an error in it. The error, if any, will be in one part of the sentence. The number corresponding to that part will be your answer. If the given sentence is correct as it is, mark the answer as 'No error'. Ignore the errors of punctuation, if any.

151.

The student had high hopes (1)/ for the experiment, (2)/ despite it being (3)/ to early to predict the result. (4)

- A. 1
- B. 2
- C. 3
- D. 4
- E. No error

152. The teacher allowed her students (1)/ a sneak peak (2)/ into the events she had planned (3)/ for the camping trip. (4)

- A. 1
- B. 2
- C. 3
- D. 4
- E. No error

153. The principal decided (1)/ that it was high time (2)/ to teaching the unruly students (3)/ a lesson. (4)

- A. 1
- B. 2
- C. 3
- D. 4
- E. No error

Direction: Read the sentence to find out whether there is an error in it. The error, if any, will be in one part of the sentence. The number corresponding to that part will be your answer. If the given sentence is correct as it is, mark the answer as 'No error'. Ignore the errors of punctuation, if any.

154. It was difficult for her to loose (1)/ the race, but she decided (2)/ to

take it in her stride (3)/ and train harder. (4)

- A. 1
- B. 2
- C. 3
- D. 4
- E. No error

155. She could have finished her homework (1)/ before going to bed, (2)/ but she decided to do it (3)/ in the morning. (4)

- A. 1
- B. 2
- C. 3
- D. 4
- E. No error

Direction: Rearrange the following six sentences (A), (B), (C), (D), (E) and (F) in the proper sequence to form a meaningful paragraph. Then answer the questions given below them.

A. According to the statement, the wolf (*Canis lupus*), will become a fully protected species in the eastern European country of Slovakia from 1st June 2021.

B. The decision was a result of a massive campaign by 31 non-profits for granting full protection to wolves, including WWF-Slovakia.

C. It had approved the hunting of 50 wolves for the 2020-2021 season, while the quota for the previous year was 35.

D. An important press statement, after a lot of consideration as well as facing massive opposition, was passed by the World Wildlife Fund on May 11, 2021.

E. Slovakia's agriculture ministry, until the ban was imposed on the hunting, granted quotas to hunt wolves and as a result, the hunters have legally killed almost 1,800 wolves since 2000.



**IBPS RRB PO/Clerk
2021 Course (Batch 4)**

START FREE TRIAL

156. Which of the following will be the THIRD statement after rearrangement?

- A. A
- B. B
- C. C
- D. D
- E. E

157. Which of the following will be the FIRST statement after rearrangement?

- A. A
- B. B
- C. C
- D. D
- E. E

158. Which of the following will be the FOURTH statement after rearrangement?

- A. A
- B. B
- C. C
- D. D
- E. E

159. Which of the following will be the SECOND statement after rearrangement?

- A. A
- B. B
- C. C
- D. D
- E. E

160. Which of the following will be the FIFTH statement after rearrangement?

- A. A
- B. B
- C. C
- D. D
- E. E

161. When you turn on the computer, the boot routine will perform this test _____.

- A. RAM test
- B. Disk drive test
- C. Memory test
- D. Power-on self-test
- E. None of these

162. A cookie is _____.

- A. stores information about the user's web activity
- B. stores software developed by the user
- C. stores the password of the user
- D. stores the command used by the user
- E. None of these

163. Which device consists of electronic circuits that interpret and execute program instructions?

- A. Central Processing Unit
- B. Input
- C. Output
- D. Pointer
- E. None of these above

164. Softcopy is the intangible output, so then what is hardcopy?

- A. The physical parts of the computer
- B. The printed parts of the computer
- C. The printed output
- D. The physical output devices
- E. None of the above

165. A _____ is a device that not only provides surge protection but also furnishes your computer with battery backup power during a power outage.

- A. Surge strip
- B. USB
- C. UPS
- D. Battery strip
- E. None of these

166. Linux is an example of _____.

- A. freeware
- B. open source software
- C. shareware
- D. complimentary
- E. None of these



167. In most WANs, the network contains numerous cables of telephone lines, each one connecting a pair of _____.

- A. Packet
- B. Star topology
- C. Router
- D. Antennas
- E. None of these

168. A computer program that translates one program instructions at a time into machine language is called a/an _____.

- A. Interpreter
- B. CPU
- C. Compiler
- D. Simulator
- E. None of these

169. Computer memory that temporarily stores information is called the _____.

- A. RAM
- B. CPU
- C. ROM
- D. IBM
- E. None of these

170.

In shortcut, Shift+ Delete is used to _____.

- A. Delete the select item permanently without replacing the item in the Recycle bin
- B. Copy the selected item
- C. Rename the selected item
- D. Create a shortcut to the selected item
- E. None of these

171. Which of the following is a base of hexadecimal number?

- A. 8
- B. 2
- C. 10
- D. 16
- E. 24

172. Switch is a network device whose responsibility is to _____.

- A. Protect from virus attack
- B. turn of the power to network
- C. Connect Network devices
- D. Boot the network
- E. None of these

173. The software tools that enable a user to interact with a computer for specific purposes are known as _____.

- A. Hardware
- B. Networked Software
- C. Shareware
- D. Applications
- E. None of these

174. A computer used at supermarkets, departmental stores and restaurant etc is called _____ terminal.

- A. P-O-S
- B. Dumb
- C. Intelligent
- D. Smart
- E. Calculating

175. What is a term used for a half byte?

- A. bit
- B. nibble
- C. bug
- D. word
- E. None of these

176. **BIOS** stands for:

- A. Basic Input Output Storage
- B. Basic Input Output System
- C. Basic Internal Output System
- D. Basic Inner Output System
- E. Basic Input Outer System

177. A hacker that changes or forges information in an electronic resource, is engaging in _____.

- A. denial of service
- B. sniffing



**IBPS RRB PO/Clerk
2021 Course** (Batch 4)

START FREE TRIAL

- C. terrorism
- D. data diddling
- E. None of these

178. A goal of normalization is to _____.

- A. minimize the number of relationships
- B. minimize the number of entities
- C. minimize the number of tables
- D. minimize the number of redundancy
- E. None of these

179. 'Handshaking' in Networking parlance means _____.

- A. connecting computers to a hub
- B. distributed networks
- C. having same operating system on different computers
- D. sending e-mail
- E. receiving e-mails

180. _____ are bundles of related software packages that are sold together.

- A. Personal productivity tools
- B. Word and PowerPoint
- C. Screen savers
- D. Excel and WordPerfect
- E. Software suites

181. In Excel, charts are created using which option

- A. Chart Wizard
- B. Pivot Table
- C. Pie Chart
- D. Bar Graphs
- E. None of these

182. A data warehouse _____.

- A. Contains numerous naming conventions and formats
- B. Is organised around important subject areas
- C. Contains only current data
- D. Can be updated by end users
- E. Explains some observed event or condition

183. Which area in an excel window allows entering values and formulas?

- A. Title bar
- B. Menu bar
- C. Formula bar
- D. Standard bar
- E. None of these

184. The Third Generation Computer was made with _____.

- A. Vacuum Tube
- B. Discrete Components
- C. Integrated circuits
- D. Bio Chips
- E. None of these

185. _____ is one reason for problems of data integrity.

- A. Data availability constraints
- B. Data inconsistency
- C. Security constraints
- D. Unauthorised access of data
- E. Data redundancy

186. Which of the following refers to the process of a computer receiving information from a server on the Internet?

- A. gathering
- B. uploading
- C. inputting
- D. outputting
- E. downloading

187. The digital telecommunications term ISDN is an abbreviation for _____.

- A. Integrated Standard Digital Networks
- B. Internet Services Data Network
- C. Interactive Standard Dynamic Networks
- D. Integrated Services Digital Network
- E. None of these

188. The secret code that restricts entry to some programs _____.



- A. password
- B. passport
- C. entry-code
- D. access-code
- E. None of these

189. _____ refers to the unauthorized copying and distribution of software.

- A. Hacking
- B. Software Piracy
- C. Software literacy
- D. Cracking
- E. Copyright

190. In Excel, a _____ is identified by the cell in the upper-left corner and the cell in the lower-right corner, separated by a colon.

- A. worksheet
- B. value
- C. cell reference
- D. range
- E. None of these

191. Oracle is an example of _____ application software.

- A. Database
- B. word processing
- C. project management
- D. presentation graphics
- E. Desktop

192. Specialised programs that assist users in locating information on the Web are called _____.

- A. information engines
- B. search engines
- C. web browsers
- D. resource locators
- E. None of these

193. With the help of proper software, the mouse can also be used to _____.

- A. Draw picture
- B. make ideal graphics
- C. Both 1 and 2
- D. Listening
- E. None of these

194. A field that uniquely identifies records in the table is known as _____.

- A. Primary Key
- B. Candidate key
- C. Unique Key
- D. Special key
- E. None of these

195. Who among the following person has defined the term 'computer virus'?

- A. Tom Kilburn
- B. Charles Babbage
- C. Konrad Zuse
- D. Frederick Cohen
- E. None of these

196. _____ is a measure of how much the strength of the signal is reduced in passing through a medium.

- A. Frequency
- B. Bandwidth
- C. Attenuation
- D. Amplification
- E. None of these

197. Which device uses a handheld operating system?

- A. A Tablet
- B. A Personal Computer
- C. a Laptop
- D. A mainframe
- E. None of these

198. Which of the following file name extension suggests that the file is Backup copy of another file?

- A. TXT
- B. COM
- C. BAS
- D. BAK
- E. None of these

199. What is backup?

- A. Adding more components to your network



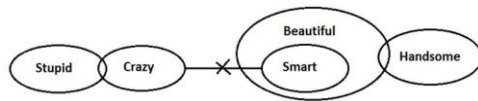
- B. Protecting data by copying it from the original source to a different destination
- C. Filtering old data from the new data
- D. Accessing data on tape
- E. None of the above

200. The ability to recover and read deleted or damaged files from a criminal's computer is an example of

- a law enforcement specialty called_____.
- A. robotics
 - B. simulation
 - C. computer forensics
 - D. animation
 - E. None of these

###ANSWERS###

1. Ans. E.

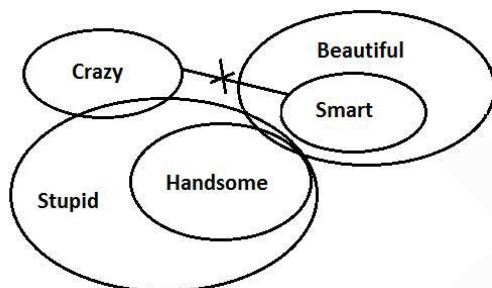


Conclusions:

I. Some Stupid are not Smart. – It is true as only a few Stupid are Crazy and no Crazy are Smart.

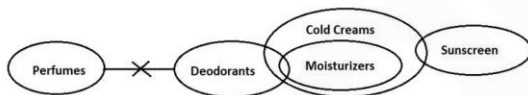
II. No Smart are Handsome. – It is false as we don't know any direct relation between Smart and Handsome.

III. All Handsome being Stupid is a possibility. – It is true as shown in figure given below:



Thus, both conclusions I and III follow.

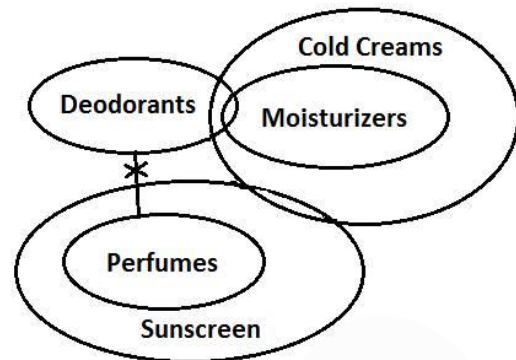
2. Ans. B.



Conclusions:

I. Some Deodorants are Sunscreen. – It is false as we don't know any direct relation between Deodorants and Sunscreen.

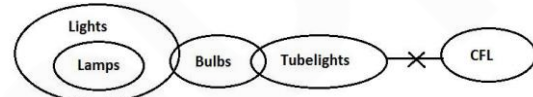
II. All Perfumes being Sunscreen is a possibility. – It is true as shown in figure given below:



III. No Moisturizers are Perfumes. – It is false as we don't know any direct relation between Moisturizers and Perfumes.

Thus, only conclusion II follows.

3. Ans. C.



Conclusions:

I. No Lamps are Tubelights. – It is false as we don't know any direct relation between Lamps and Tubelights.

II. Some CFL are not Bulbs. – It is false as we don't know any direct relation between CFL and Bulbs.

III. Some Lights are not Bulbs. – It is true as only a few Lights are Bulbs that means some Lights are not Bulbs.

Thus, only conclusion III follows.

4. Ans. C.

1) T sits second to the right of Q.

2) Q sits fifth from an end.



**IBPS RRB PO/Clerk
2021 Course** (Batch 4)

START FREE TRIAL

Case 1

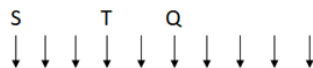


Case 2

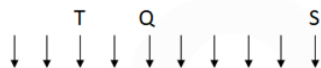


- 3) Four people sit between S and Q.
4) More than two people sit between T and S.
(Here, case 1 will be eliminated and we will continue with case 2)

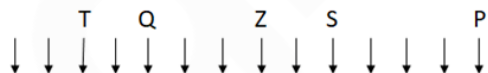
Case 1



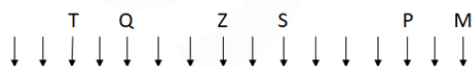
Case 2



- 5) Three people sit between S and P, who is not an immediate neighbor of Q.
6) Five people sit between Z and P.
7) At most two people sit to the left of P.



- 8) Seven people sit between M and Z.

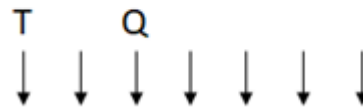


Therefore, option C is the correct answer.

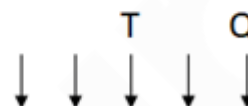
5. Ans. D.

- 1) T sits second to the right of Q.
2) Q sits fifth from an end.

Case 1

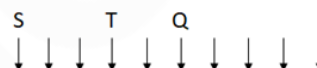


Case 2

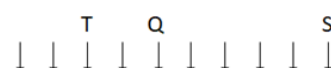


- 3) Four people sit between S and Q.
4) More than two people sit between T and S.
(Here, case 1 will be eliminated and we will continue with case 2)

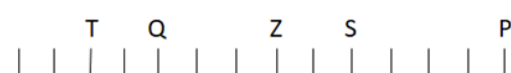
Case 1



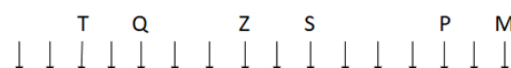
Case 2



- 5) Three people sit between S and P, who is not an immediate neighbor of Q.
6) Five people sit between Z and P.
7) At most two people sit to the left of P.



- 8) Seven people sit between M and Z.



Therefore, option D is the correct answer.

6. Ans. B.

- 1) T sits second to the right of Q.

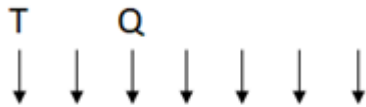


**IBPS RRB PO/Clerk
2021 Course** (Batch 4)

START FREE TRIAL

2) Q sits fifth from an end.

Case 1

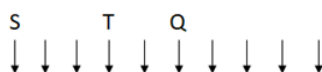


Case 2

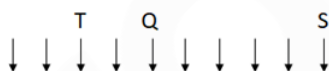


3) Four people sit between S and Q.
4) More than two people sit between T and S.
(Here, case 1 will be eliminated and we will continue with case 2)

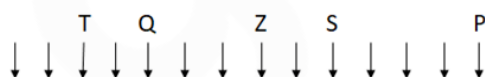
Case 1



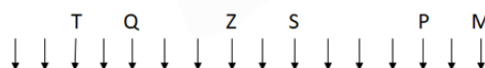
Case 2



5) Three people sit between S and P, who is not an immediate neighbor of Q.
6) Five people sit between Z and P.
7) At most two people sit to the left of P.



8) Seven people sit between M and Z.



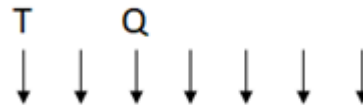
Therefore, option B is the correct answer.

7. Ans. C.

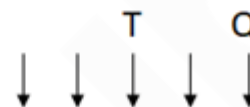
1) T sits second to the right of Q.

2) Q sits fifth from an end.

Case 1

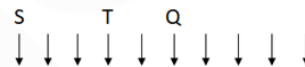


Case 2

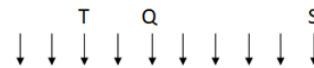


3) Four people sit between S and Q.
4) More than two people sit between T and S.
(Here, case 1 will be eliminated and we will continue with case 2)

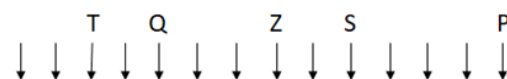
Case 1



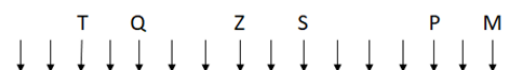
Case 2



5) Three people sit between S and P, who is not an immediate neighbor of Q.
6) Five people sit between Z and P.
7) At most two people sit to the left of P.



8) Seven people sit between M and Z.



Therefore, option C is the correct answer.

8. Ans. C.

Logic behind the steps:



**IBPS RRB PO/Clerk
2021 Course** (Batch 4)

START FREE TRIAL

Step 1: Words are arranged according to the last letter in ascending order

Step 2: According to the number of letters in the word in descending order. If two words have the same number of letters, then they are arranged in reverse dictionary order.

Step 3: The vowels in the letters are replaced by the previous letters in English alphabetical series and then arranged according to the dictionary. (A=Z; E=D; I=H; O=N; U=T)

Step 4: Number = (1st letter P.V. + Last letter P.V.) in English alphabet x 2

Input: Promotion After Immediately Riverdale Fantastic

Step 1: Fantastic Riverdale Promotion After Immediately

Step 2: Immediately Riverdale Promotion Fantastic After

Step 3: Fzntzsthc hmmddhztdly prnmnthnn rhvdrdzld zftdr

Step 4: 18 66 60 44 88

Clearly, 'Fzntzsthc hmmddhztdly prnmnthnn rhvdrdzld zftdr' is the correct one.

9. Ans. C.

Logic behind the steps:

Step 1: Words are arranged according to the last letter in ascending order

Step 2: According to the number of letters in the word in descending order. If two words have the same number of letters, then they are arranged in reverse dictionary order.

Step 3: The vowels in the letters are replaced by the previous letters in English alphabetical series and then arranged according to the dictionary. (A=Z; E=D; I=H; O=N; U=T)

Step 4: Number = (1st letter P.V. + Last letter P.V.) in English alphabet x 2

Input: Promotion After Immediately Riverdale Fantastic

Step 1: Fantastic Riverdale Promotion After Immediately

Step 2: Immediately Riverdale Promotion Fantastic After

Step 3: Fzntzsthc hmmddhztdly prnmnthnn rhvdrdzld zftdr

Step 4: 18 66 60 44 88

Clearly, three numbers are divisible by 11 in the last step.

10. Ans. E.

Logic behind the steps:

Step 1: Words are arranged according to the last letter in ascending order

Step 2: According to the number of letters in the word in descending order. If two words have the same number of letters, then they are arranged in reverse dictionary order.

Step 3: The vowels in the letters are replaced by the previous letters in English alphabetical series and then arranged according to the dictionary. (A=Z; E=D; I=H; O=N; U=T)

Step 4: Number = (1st letter P.V. + Last letter P.V.) in English alphabet x 2

Input: Promotion After Immediately Riverdale Fantastic

Step 1: Fantastic Riverdale Promotion After Immediately

Step 2: Immediately Riverdale Promotion Fantastic After

Step 3: Fzntzsthc hmmddhztdly prnmnthnn rhvdrdzld zftdr

Step 4: 18 66 60 44 88

Clearly, 'Riverdale' is 4th from the right in step 2.

11. Ans. A.

Logic behind the steps:

Step 1: Words are arranged according to the last letter in ascending order

Step 2: According to the number of letters in the word in descending order. If two words have the same number of letters, then they are arranged in reverse dictionary order.



**IBPS RRB PO/Clerk
2021 Course (Batch 4)**

START FREE TRIAL

Step 3: The vowels in the letters are replaced by the previous letters in English alphabetical series and then arranged according to the dictionary. (A=Z; E=D; I=H; O=N; U=T)

Step 4: Number = (1st letter P.V. + Last letter P.V.) in English alphabet x 2

Input: Promotion After Immediately Riverdale Fantastic

Step 1: Fantastic Riverdale Promotion After Immediately

Step 2: Immediately Riverdale Promotion Fantastic After

Step 3: Fzntzsthc h m m d d h z t d l y p r n m n t h n n r h v d r d z l d z f t d r

Step 4: 18 66 60 44 88

Clearly, 'Prnmnthnn' is 3rd from the left in step 3.

12. Ans. D.

'Almost' = 'GC#21'

1) code for the first alphabet of the code = reverse letter of the last alphabet of the given word

2) code for the second alphabet of the code = next to next alphabet of the first alphabet according to dictionary, of the given word

3) code for the symbol =

= if total alphabets are in even number

@ = if total alphabets are in odd number

4) code for the last number = addition of place value of first alphabet and last alphabet of the given word in the alphabet series.

Therefore, option D is the correct answer.

13. Ans. C.

'Almost' = 'GC#21'

'Almost' = 'GC#21'

1) code for the first alphabet of the code = reverse place value letter of the last alphabet of the given word

2) code for the second alphabet of the code = next to next alphabet of the first alphabet according to dictionary, of the given word

3) code for the symbol =

= if total alphabets are in even number

@ = if total alphabets are in odd number

4) code for the last number = addition of place value of first alphabet and last alphabet of the given word in the alphabet series.

Therefore, option C is the answer.

14. Ans. C.

'Almost' = 'GC#21'

1) code for the first alphabet of the code = reverse place value letter of the last alphabet of the given word

2) code for the second alphabet of the code = next to next alphabet of the first alphabet according to dictionary, of the given word

3) code for the symbol =

= if total alphabets are in even number

@ = if total alphabets are in odd number

4) code for the last number = addition of place value of first alphabet and last alphabet of the given word

Therefore, option C is the correct answer.

15. Ans. B.

Persons: A, B, C, D, E, F, G, H and J

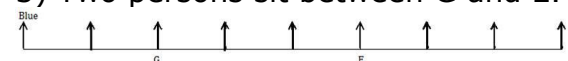
Colors: Pink, Yellow, Green, Blue, Red, Black, Brown, White and Violet

Steps:

1) The one who likes blue sits on the leftmost place.

2) G sits on the 3rd position from the left end.

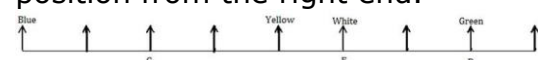
3) Two persons sit between G and E.



4) The one who likes white sits on the 6th position from the left end.

5) The one, who likes yellow, sits just to the left of the one who likes white.

6) D who likes green sits on the 2nd position from the right end.



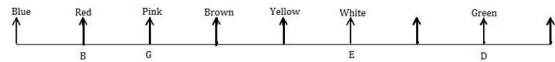
**IBPS RRB PO/Clerk
2021 Course (Batch 4)**

START FREE TRIAL

7) The one who likes brown sits on the 4th position from the left end.

8) The one who likes pink sits exactly between the one who likes brown and the one who likes red, but not on the 5th position from the left end.

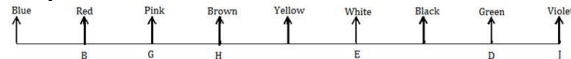
9) B sits on an even position from the left end but B doesn't like brown.



10) H sits on an even position from the left. The only place left for H is 4th position from the left.

11) The one who likes black does not sit at the rightmost position.

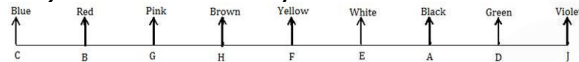
12) J likes violet.



12) A sits on an odd position from the left end but not on the leftmost position.

13) A does not sit on the 5th position from the left end.

14) C doesn't like yellow.



Clearly, C sits on the leftmost place.

16. Ans. C.

Persons: A, B, C, D, E, F, G, H and J
Colors: Pink, Yellow, Green, Blue, Red, Black, Brown, White and Violet
Steps:

1) The one who likes blue sits on the leftmost place.

2) G sits on the 3rd position from the left end.

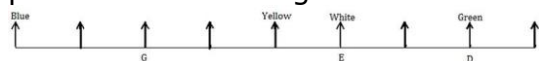
3) Two persons sit between G and E.



4) The one who likes white sits on the 6th position from the left end.

5) The one, who likes yellow, sits just to the left of the one who likes white.

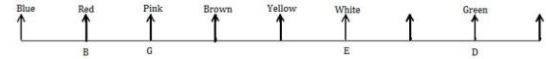
6) D who likes green sits on the 2nd position from the right end.



7) The one who likes brown sits on the 4th position from the left end.

8) The one who likes pink sits exactly between the one who likes brown and the one who likes red, but not on the 5th position from the left end.

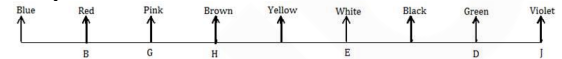
9) B sits on an even position from the left end but B doesn't like brown.



10) H sits on an even position from the left. The only place left for H is 4th position from the left.

11) The one who likes black does not sit at the rightmost position.

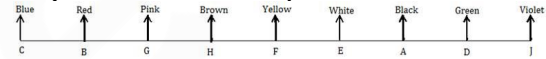
12) J likes violet.



12) A sits on an odd position from the left end but not on the leftmost position.

13) A does not sit on the 5th position from the left end.

14) C doesn't like yellow.



Clearly, 4 persons are sitting between A and B (Red).

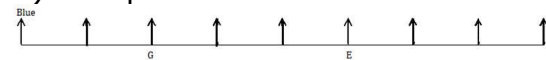
17. Ans. B.

Persons: A, B, C, D, E, F, G, H and J
Colors: Pink, Yellow, Green, Blue, Red, Black, Brown, White and Violet
Steps:

1) The one who likes blue sits on the leftmost place.

2) G sits on the 3rd position from the left end.

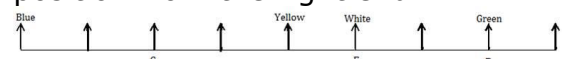
3) Two persons sit between G and E.



4) The one who likes white sits on the 6th position from the left end.

5) The one, who likes yellow, sits just to the left of the one who likes white.

6) D who likes green sits on the 2nd position from the right end.



7) The one who likes brown sits on the 4th position from the left end.

8) The one who likes pink sits exactly between the one who likes brown and

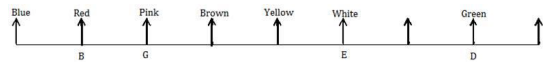


**IBPS RRB PO/Clerk
2021 Course (Batch 4)**

START FREE TRIAL

the one who likes red, but not on the 5th position from the left end.

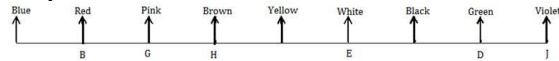
9) B sits on an even position from the left end but B doesn't like brown.



10) H sits on an even position from the left. The only place left for H is 4th position from the left.

11) The one who likes black does not sit at the rightmost position.

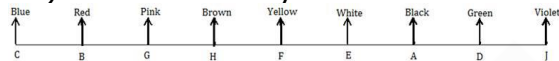
12) J likes violet.



12) A sits on an odd position from the left end but not on the leftmost position.

13) A does not sit on the 5th position from the left end.

14) C doesn't like yellow.



Clearly, only D sits on an even position (8th) from the left end.

18. Ans. E.

Persons: A, B, C, D, E, F, G, H and J
Colors: Pink, Yellow, Green, Blue, Red, Black, Brown, White and Violet
Steps:

1) The one who likes blue sits on the leftmost place.

2) G sits on the 3rd position from the left end.

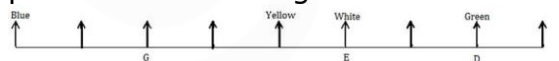
3) Two persons sit between G and E.



4) The one who likes white sits on the 6th position from the left end.

5) The one, who likes yellow, sits just to the left of the one who likes white.

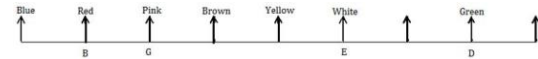
6) D who likes green sits on the 2nd position from the right end.



7) The one who likes brown sits on the 4th position from the left end.

8) The one who likes pink sits exactly between the one who likes brown and the one who likes red, but not on the 5th position from the left end.

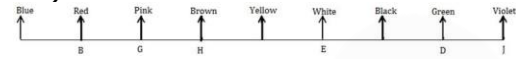
9) B sits on an even position from the left end but B doesn't like brown.



10) H sits on an even position from the left. The only place left for H is 4th position from the left.

11) The one who likes black does not sit at the rightmost position.

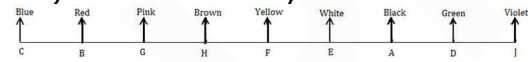
12) J likes violet.



12) A sits on an odd position from the left end but not on the leftmost position.

13) A does not sit on the 5th position from the left end.

14) C doesn't like yellow.



Clearly, F sits second to the left of A.

19. Ans. D.

Persons: A, B, C, D, E, F, G, H and J
Colors: Pink, Yellow, Green, Blue, Red, Black, Brown, White and Violet
Steps:

1) The one who likes blue sits on the leftmost place.

2) G sits on the 3rd position from the left end.

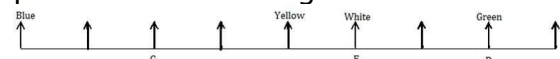
3) Two persons sit between G and E.



4) The one who likes white sits on the 6th position from the left end.

5) The one, who likes yellow, sits just to the left of the one who likes white.

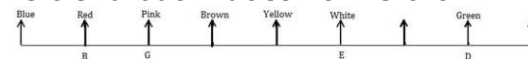
6) D who likes green sits on the 2nd position from the right end.



7) The one who likes brown sits on the 4th position from the left end.

8) The one who likes pink sits exactly between the one who likes brown and the one who likes red, but not on the 5th position from the left end.

9) B sits on an even position from the left end but B doesn't like brown.



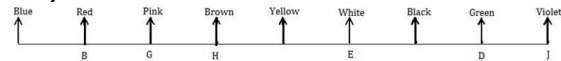
IBPS RRB PO/Clerk
2021 Course (Batch 4)

START FREE TRIAL

10) H sits on an even position from the left. The only place left for H is 4th position from the left.

11) The one who likes black does not sit at the rightmost position.

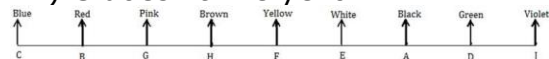
12) J likes violet.



12) A sits on an odd position from the left end but not on the leftmost position.

13) A does not sit on the 5th position from the left end.

14) C doesn't like yellow.



Clearly, 6 persons sit between B and J.

20. Ans. D.

Putting '<', '=', '>' and '≤' respectively in the place of blanks we get,

Statement: $S < T = A = R \leq K$

$S < R \rightarrow$ Definitely True

$K \geq T \rightarrow$ Definitely True

21. Ans. C.

Putting '>', '=', '<', '>' and '>' respectively in the blanks we get,

Statement: $C > L = O = T > H > S$

$C < T \rightarrow$ False

$L < S \rightarrow$ False

$O < H \rightarrow$ False

22. Ans. D.

$D = C > B \geq E \leq H < G \leq F$

Therefore, option D is the correct answer.

23. Ans. C.

While figuring out the course of action of a given statement one should look for the following points.

- A correct course of action should either lessen the problem or improve the situation created by the problem.
- A simple problem must have a straightforward course of action and not a complex one which may create more

problems than to solve or reduce it.

- A course of action should be possible and should relate to the practical aspect of life and hence the given problem.

Let's consider the options given,

I statement can be a COA as it's the responsibility of regulators to investigate any discrepancy. Forming a committee to investigate the facebook's action is the right course of action to check the authenticity of the accusation. Thus, this course of action follows.

The II statement suggest that users of facebook should refrain from sharing the private information with the facebook as there are accusation of leaking the data to chinese companies. It is logical and straightforward course of action. Thus follows.

The last statement i.e. III suggests that facebook should write apologies to it's users for leaking their data. According to the statement these are acusation and has not been proved as of now (as statement do not give any indication of these acusation to be true). Thus last statement donot follows.

24. Ans. A.

The correct answer is **option A**, i.e. **The UK home office told the Indian authorities that India's request to extradite Modi had been certified. The Indian agencies are now awaiting Modi's formal arrest.**

'Inference' is a conclusion reached on the basis of evidence and reasoning. We first make sure to read the statement carefully and then see what immediate inferences can be drawn based on our first reading. The next step is to look at the statements



**IBPS RRB PO/Clerk
2021 Course (Batch 4)**

START FREE TRIAL

given in the options, analyze them and see if they seem relevant with respect to the information/data provided to us.

Option (A) is an appropriate inference that can be drawn on the basis of the information provided. It is in the same direction as the given statement and carries the idea further with India's hoping for the arrest.

Option (C) can be rejected as no information is evident from the given context which supports the fact that Nirav Modi was spotted in London's West End earlier this month by Britain's The Telegraph newspaper. It is baseless and is thus rejected.

Option (D) can be eliminated as no information supporting the fact that Modi has travelled outside UK thrice, is evident from the given context.

From the given assumptions (A) is the most appropriate deduction that can be made.

As all the other options except (A) are irrelevant with respect to the data provided in the statement. Thus, the correct answer is option A.

25. Ans. C.

The correct answer is **option C, I are strong**, i.e. both I and II are strong in the sense to weaken the idea presented in the given statement.

We first make sure to read the statement carefully and then see what immediate inferences can be drawn based on our first reading. The next step is to look at the arguments given in the options, analyze them and see if they seem relevant with respect to the information/data provided to us. Finally, it is very important to study the question closely.

In the question it is written that which of the following '**weaken(s)**' the given statement thus, we must look for an option choice which weakens the idea of the statement.

Following the aforementioned steps, we must analyze the given statement and the corresponding question closely.

The given statement is about data security and India's views on it that the data generated in the country is a national asset, and citizens and the government have a sovereign right over it. From the statement, it is evident that we must look for the assumption which weakens this fact. The argument I weakens the statement as the policy only applies to the data stored in India while does not have jurisdiction over the data stored overseas. This deficiency of policy may hinder the desired effect.

The argument II strengthens the statement as it states the necessity of creating the policy.

Argument (III) is irrelevant and can be rejected as it does not signify the harm. Moreover, it is more in the direction of correcting the mistakes and thus does not weaken the given scenario.

Thus, the correct answer is option C.

26. Ans. D.

Seven boxes: M, N, O, P, Q, R and S.
Weight: 12, 10, 18, 20, 24 and 5.

1) More than two boxes are placed above 12kg box.

2) Only two boxes are placed between 12kg and 20 kg box, which is immediately below box M.

3) Only one box is between 12kg and box R.

4) Box O is immediately above box R.

5) Neither O nor S is 20kg box.

Case 1:



**IBPS RRB PO/Clerk
2021 Course** (Batch 4)

START FREE TRIAL

O	
R	
	12kg
M	
	20kg

Case 2:

M	
	20kg
	12kg
O	
R	

- 6) Box S is immediately above the box whose weight is 5kg.
 7) Weight of box S is neither 20kg nor 12kg.
 8) Box N is immediately above Box Q. Only one box is between box N and the box whose weight is 10 kg which is below box N.
 9) Only two boxes are kept between 10kg box and 8kg box.

Case 1:

O	
R	
N	
Q	12kg
S	10kg
M	5kg
	20kg

Case 2:

M	
	20kg
S	8kg
N	5kg
Q	12kg
O	10kg
R	

- 10) The box whose weight is 18 kg is neither placed at the top nor at the bottom.
 (Hence, case 2 will be eliminated, we can further proceed with case 1)

(Finally, the weight of box O is 24 kg and weight of box P is 20 kg)

O	24kg
R	8kg
N	18kg
Q	12kg
S	10kg
M	5kg
P	20kg

Clearly, the weight of the box which is placed in the middle of the stack is 12kg.

27. Ans. A.

Seven boxes: M, N, O, P, Q, R and S.
 Weight: 12, 10, 18, 20, 24 and 5.

- 1) More than two boxes are placed above 12kg box.
- 2) Only two boxes are placed between 12kg and 20 kg box, which is immediately below box M.
- 3) Only one box is between 12kg and box R.
- 4) Box O is immediately above box R.
- 5) Neither O nor S is 20kg box.

Case 1:

O	
R	
	12kg
M	
	20kg

Case 2:

M	
	20kg
	12kg
O	
R	

- 6) Box S is immediately above the box whose weight is 5kg.
 7) Weight of box S is neither 20kg nor 12kg.
 8) Box N is immediately above Box Q. Only one box is between box N and



**IBPS RRB PO/Clerk
2021 Course (Batch 4)**

START FREE TRIAL

the box whose weight is 10 kg which is below box N.

9) Only two boxes are kept between 10kg box and 8kg box.

Case 1:

O	
R	
N	
Q	12kg
S	10kg
M	5kg
	20kg

Case 2:

M	
	20kg
S	8kg
N	5kg
Q	12kg
O	10kg
R	

10) The box whose weight is 18 kg is neither placed at the top nor at the bottom.

(Hence, case 2 will be eliminated, we can further proceed with case 1)

(Finally, the weight of box O is 24 kg and weight of box P is 20 kg)

O	24kg
R	8kg
N	18kg
Q	12kg
S	10kg
M	5kg
P	20kg

Clearly, Weight of box N and Q is equal to the weight of box S and Box P among the given options.

28. Ans. D.

Seven boxes: M, N, O, P, Q, R and S.
Weight: 12, 10, 18, 20, 24 and 5.

1) More than two boxes are placed above 12kg box.

2) Only two boxes are placed between 12kg and 20 kg box, which is immediately below box M.

3) Only one box is between 12kg and box R.

4) Box O is immediately above box R.

5) Neither O nor S is 20kg box.

Case 1:

O	
R	
	12kg
M	
	20kg

Case 2:

M	
	20kg
	12kg
O	
R	

6) Box S is immediately above the box whose weight is 5kg.

7) Weight of box S is neither 20kg nor 12kg.

8) Box N is immediately above Box Q. Only one box is between box N and the box whose weight is 10 kg which is below box N.

9) Only two boxes are kept between 10kg box and 8kg box.

Case 1:

O	
R	
N	
Q	12kg
S	10kg
M	5kg
	20kg

Case 2:

M	
	20kg
S	8kg
N	5kg
Q	12kg
O	10kg
R	



IBPS RRB PO/Clerk
2021 Course (Batch 4)

START FREE TRIAL

10) The box whose weight is 18 kg is neither placed at the top nor at the bottom.

(Hence, case 2 will be eliminated, we can further proceed with case 1)

(Finally, the weight of box O is 24 kg and weight of box P is 20 kg)

O	24kg
R	8kg
N	18kg
Q	12kg
S	10kg
M	5kg
P	20kg

Clearly, no box is kept above box O.

29. Ans. A.

Seven boxes: M, N, O, P, Q, R and S.
Weight: 12, 10, 18, 20, 24 and 5.

1) More than two boxes are placed above 12kg box.

2) Only two boxes are placed between 12kg and 20 kg box, which is immediately below box M.

3) Only one box is between 12kg and box R.

4) Box O is immediately above box R.

5) Neither O nor S is 20kg box.

Case 1:

O	
R	
	12kg
M	
	20kg

Case 2:

M	
	20kg
	12kg
O	
R	

6) Box S is immediately above the box whose weight is 5kg.

7) Weight of box S is neither 20kg nor 12kg.

8) Box N is immediately above Box Q. Only one box is between box N and the box whose weight is 10 kg which is below box N.

9) Only two boxes are kept between 10kg box and 8kg box.

Case 1:

O	
R	
N	
Q	12kg
S	10kg
M	5kg
	20kg

Case 2:

M	
	20kg
S	8kg
N	5kg
Q	12kg
O	10kg
R	

10) The box whose weight is 18 kg is neither placed at the top nor at the bottom.

(Hence, case 2 will be eliminated, we can further proceed with case 1)

(Finally, the weight of box O is 24 kg and weight of box P is 20 kg)

O	24kg
R	8kg
N	18kg
Q	12kg
S	10kg
M	5kg
P	20kg

Clearly, box M contains least weight.

30. Ans. E.

Seven boxes: M, N, O, P, Q, R and S.
Weight: 12, 10, 18, 20, 24 and 5.

1) More than two boxes are placed above 12kg box.

2) Only two boxes are placed between 12kg and 20 kg box, which is immediately below box M.

3) Only one box is between 12kg and box R.



**IBPS RRB PO/Clerk
2021 Course (Batch 4)**

START FREE TRIAL

- 4) Box O is immediately above box R.
5) Neither O nor S is 20kg box.

Case 1:

O	
R	
	12kg
M	
	20kg

Case 2:

M	
	20kg
	12kg
O	
R	

- 6) Box S is immediately above the box whose weight is 5kg.
7) Weight of box S is neither 20kg nor 12kg.
8) Box N is immediately above Box Q. Only one box is between box N and the box whose weight is 10 kg which is below box N.
9) Only two boxes are kept between 10kg box and 8kg box.

Case 1:

O	
R	
N	
Q	12kg
S	10kg
M	5kg
	20kg

Case 2:

M	
	20kg
S	8kg
N	5kg
Q	12kg
O	10kg
R	

- 10) The box whose weight is 18 kg is neither placed at the top nor at the bottom.

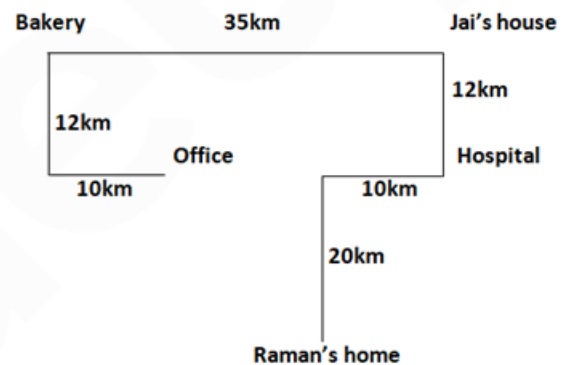
(Hence, case 2 will be eliminated, we can further proceed with case 1)

(Finally, the weight of box O is 24 kg and weight of box P is 20 kg)

O	24kg
R	8kg
N	18kg
Q	12kg
S	10kg
M	5kg
P	20kg

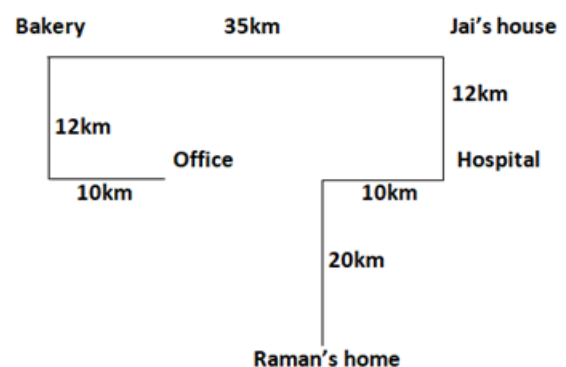
Clearly, all the statements regarding Q are true.

31. Ans. D.



Therefore, option D is the correct answer.

32. Ans. C.



In all expect in the option C the latter is in the north west of the former.

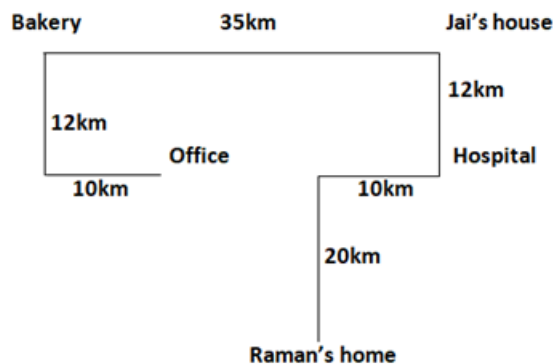
Therefore, option C is the correct answer.



**IBPS RRB PO/Clerk
2021 Course** (Batch 4)

START FREE TRIAL

33. Ans. A.



Therefore, option A is the correct answer.

34. Ans. D.

The correct answer is option D, i.e. None of the above.

A course of action is something that needs to be done considering the present scenario in mind.

From the information provided we get a clear idea that no problem has been posed regarding which a suitable action can be taken and because of this fact the possibility of a possible course of action is ruled out.

The given statement talks about the sixth elections that just happened in Nigeria. It also captures the fact that APC defeated his closest rival PDP, by about four million votes and PDP chief is planning to question the results in court. And other supporting information is also stated. Thus, in this scenario a suitable course of action could have been from PDP planning to go to court or from APC preparing for its stand against the allegations.

Option A is a general statement and does not suggest any course of action. Thus, it is rejected. On similar grounds, option B can also be eliminated.

Option C draws a comparison between the process followed in India and Nigeria. Thus, it also in no sense

suggests any course of action and is thus rejected.

Hence, all the course of action stated in the given options can be ruled out and the most correct answer choice is option D

35. Ans. E.

The correct answer is option E, i.e. With more than 70 civic organisations monitoring the elections, the allegations claimed by PDP won't stand long.

'Inference' is a conclusion reached on the basis of evidence and reasoning.

We first make sure to read the statement carefully and then see what immediate inferences can be drawn based on our first reading. The next step is to look at the statements given in the options, analyze them and see if they seem relevant with respect to the information/data provided to us.

Option (A) can be rejected as the facts stated in the option choice are not evident from the given context. We cannot infer anything on our own thus, it is eliminated.

Option (B) is also rejected as half of the information stated in it is backed up from the given context but the fact that each state has an elected governor and a legislative assembly is not evident from the given context.

Option (C) is factually incorrect and is thus eliminated. It states wrong information.

Option (D) can be eliminated as it is contradictory to the information provided as in the given context, we are talking about 70 civic organisations monitoring the elections, which enhanced the credibility of the elections and the given option talks about the fact that elections were fraught with all kinds of flaws. These are two contradicting ideas. Moreover, no information about the nature of the elections in



**IBPS RRB PO/Clerk
2021 Course (Batch 4)**

START FREE TRIAL

the past is supported in the given context. Thus, it is rejected.

Option (E) is the correct inference that can be made on the basis of the information stated. As stated in the given context that a coalition of more than 70 civic organisations monitored the elections, which enhanced the credibility of the elections, thereby the claims or the allegations of the losing PDP against APC won't be able to stand long. It is a suitable inference on the basis of the information provided and is thus the correct answer choice.

Thus, the most correct answer choice is option E and rest of the options can be rejected.

36. Ans. D.

The correct answer is option D, i.e. Among the 91 political parties registered, PDP lost the election to ADP and made claims regarding the elections being militarised.

The given statement talks about the sixth elections that just happened in Nigeria. It also captures the fact that APC defeated his closest rival PDP, by about four million votes and PDP chief is planning to question the results in court. And other supporting information is also stated. Thus, a suitable answer choice must be relevant to this information provided. Option A can be rejected as no information supporting the facts stated can be inferred from the given context.

Option D is contextually relevant to the information provided. It is a summary of the information stated in the given context and is thus appropriately relevant and is the suitable answer choice.

Option E can be rejected as it is a factually incorrect as from the given context it is evident that a coalition of more than 70 civic

organisations monitored the elections whereas the given option states that a coalition of less than 70 civic organisations monitored the elections. Thus, it is eliminated.

Thus, the most correct answer choice is option D and rest of the options can be rejected.

37. Ans. C.

Case 1:

If we follow all the given conditions and reach to the position where Amra was born after vickey which is not fitted here so we abort this case.

1965 →

1966 → Lakshya

1972 → Ahana

1984 →

1989 →

1993 → Vickey

1999 → Kismat

2002 → Kajal

Case 2:

If we reach to the information where given that Chintu is younger then Amra which is not fitted here so we abort this case.

1965 →

1966 →

1972 →

1984 →

1989 →

1993 → Vickey

1999 → Kismat

2002 → Kajal

Case 3:

This case follows all the given conditions.

1965 → Archana

1966 → Vickey

1972 → Kismat

1984 → Amra

1989 → Lakshya

1993 → Chintu

1999 → Aayu

2002 → Kajal

38. Ans. D.

Case 1:



**IBPS RRB PO/Clerk
2021 Course (Batch 4)**

START FREE TRIAL

If we follow all the given conditions and reach to the position where Amra was born after vickey which is not fitted here so we abort this case.

1965 →
1966 → Lakshya
1972 → Ahana
1984 →
1989 →
1993 → Vickey
1999 → Kismat
2002 → Kajal

Case 2:

If we reach to the information where given that Chintu is younger then Amra which is not fitted here so we abort this case.

1965 →
1966 →
1972 →
1984 →
1989 →
1993 → Vickey
1999 → Kismat
2002 → Kajal

Case 3:

This case follows all the given conditions.

1965 → Archana
1966 → Vickey
1972 → Kismat
1984 → Amra
1989 → Lakshya
1993 → Chintu
1999 → Aayu
2002 → Kajal

39. Ans. B.

Case 1:

If we follow all the given conditions and reach to the position where Amra was born after vickey which is not fitted here so we abort this case.

1965 →
1966 → Lakshya
1972 → Ahana
1984 →
1989 →
1993 → Vickey
1999 → Kismat

2002 → Kajal

Case 2:

If we reach to the information where given that Chintu is younger then Amra which is not fitted here so we abort this case.

1965 →
1966 →
1972 →
1984 →
1989 →
1993 → Vickey
1999 → Kismat
2002 → Kajal

Case 3:

This case follows all the given conditions.

1965 → Archana
1966 → Vickey
1972 → Kismat
1984 → Amra
1989 → Lakshya
1993 → Chintu
1999 → Aayu
2002 → Kajal

40. Ans. E.

Case 1:

If we follow all the given conditions and reach to the position where Amra was born after vickey which is not fitted here so we abort this case.

1965 →
1966 → Lakshya
1972 → Ahana
1984 →
1989 →
1993 → Vickey
1999 → Kismat
2002 → Kajal

Case 2:

If we reach to the information where given that Chintu is younger then Amra which is not fitted here so we abort this case.

1965 →
1966 →
1972 →
1984 →
1989 →



**IBPS RRB PO/Clerk
2021 Course (Batch 4)**

START FREE TRIAL

1993 → Vickey
1999 → Kismat
2002 → Kajal

Case 3:

This case follows all the given conditions.

1965 → Archana
1966 → Vickey
1972 → Kismat
1984 → Amra
1989 → Lakshya
1993 → Chintu
1999 → Aayu
2002 → Kajal

41. Ans. D.

From the pie chart,
Number of male candidates in
January = 25% of 80 = 20

And the table,

Number of female candidates in
January = $25 \times 2 - 20 = 30$

Similarly,

Month	Male candidates	Female candidates
January	20	30
February	16	20
March	12	18
April	8	24
May	24	16

Number of female candidates who
appeared for an interview in June =
 $16 \times 0.75 = 12$

Number of candidates = $\frac{12}{0.24} = 50$

Number of male candidates who
appeared for an interview in June =
 $50 - 12 = 38$

Hence, the answer is option D.

42. Ans. A.

From the pie chart,

Number of male candidates in
January = 25% of 80 = 20

And the table,

Number of female candidates in
January = $25 \times 2 - 20 = 30$

Similarly,

Month	Male candidates	Female candidates
January	20	30
February	16	20
March	12	18
April	8	24
May	24	16

Required percentage = $\frac{24 - 20}{20} \times 100 = 20\%$

Hence, the answer is option A.

43. Ans. C.

From the pie chart,

Number of male candidates in
January = 25% of 80 = 20

And the table,

Number of female candidates in
January = $25 \times 2 - 20 = 30$

Similarly,

Month	Male candidates	Female candidates
January	20	30
February	16	20
March	12	18
April	8	24
May	24	16

Required average = $\frac{30 + 18 + 24}{3} = 24$

Hence, the answer is option C.

44. Ans. B.

From the pie chart,

Number of male candidates in
January = 25% of 80 = 20

And the table,

Number of female candidates in
January = $25 \times 2 - 20 = 30$

Similarly,

Month	Male candidates	Female candidates
January	20	30
February	16	20
March	12	18
April	8	24
May	24	16

Required ratio = $(16 + 12 + 8) : (30 + 18) = 36 : 48 = 3 : 4$

Hence, the answer is option B.

45. Ans. D.

From the pie chart,

Number of male candidates in
January = 25% of 80 = 20

And the table,



**IBPS RRB PO/Clerk
2021 Course (Batch 4)**

START FREE TRIAL

Number of female candidates in January = $25 \times 2 - 20 = 30$
Similarly,

Month	Male candidates	Female candidates
January	20	30
February	16	20
March	12	18
April	8	24
May	24	16

Number of male candidates that appeared for interview in August = $16 \times \frac{7}{4} = 28$

Number of female candidates that appeared for interview in August = $16 \times \frac{10}{4} = 40$

Required difference = $40 - 28 = 12$
Hence, the answer is option D.

46. Ans. C.

From the pie chart,
Number of male candidates in January = 25% of 80 = 20

And the table,
Number of female candidates in January = $25 \times 2 - 20 = 30$

Similarly,

Month	Male candidates	Female candidates
January	20	30
February	16	20
March	12	18
April	8	24
May	24	16

Required time = $\frac{45 \times 36 - 20 \times 52}{16} = 36.25$ minutes = 36 minutes 15 seconds

Hence, the answer is option C.

47. Ans. C.

Pattern of the series is:

$$10000 \times 0.3 = 3000$$

$$3000 \times 0.3 \times 2 = 1800$$

$$1800 \times 0.3 \times 3 = 1620$$

$$1620 \times 0.3 \times 4 = 1944$$

Hence, the answer is option C.

48. Ans. B.

Pattern of the series is:

$$900 - 2^2 = 896$$

$$896 - 4^2 = 880$$

$$880 - 6^2 = 844$$

$$844 - 8^2 = 780$$

$$780 - 10^2 = 680$$

Hence, the answer is option B.

49. Ans. E.

Pattern of the series is:

$$64 \times 1 = 64$$

$$64 \times (1 + 1.5) = 160$$

$$160 \times (2.5 + 2.5) = 800$$

$$800 \times (5 + 3.5) = 6800$$

$$6800 \times (8.5 + 4.5) = 88400$$

Hence, the answer is option E.

50. Ans. D.

Pattern of the series is:

$$13 \times 3 + 1^2 = 40$$

$$40 \times 4 + 2^3 = 168$$

$$168 \times 5 + 3^2 = 849$$

$$849 \times 6 + 4^3 = 5158$$

$$5158 \times 7 + 5^2 = 36131$$

Hence, the answer is option D.

51. Ans. E.

Pattern of the series is:

$$9450 \div 3 = 3150$$

$$3150 \div 4 = 787.5$$

$$787.5 \div 5 = 157.5$$

$$157.5 \div 6 = 26.25$$

$$26.25 \div 7 = 3.75$$

Hence, the answer is option E.

52. Ans. D.

Let the present age of Rajiv be x years.

Present age of Rajiv's sister = (x + 5) years

Age of Rajiv's father = (x + 33) years

Age of Rajiv's mother = (x + 31) years

When x = 15,

$$\text{Required sum} = x + 33 + x + 31 =$$

$$(33 + 15) + (15 + 31) = 94 \text{ years}$$

Hence, the answer is option D.

53. Ans. C.

$$\text{Speed of train C} = \frac{540}{12} = 45 \text{ m/s}$$

$$\text{Speed of train B} = 45 \times 2 = 90 \text{ m/s}$$

$$\text{Speed of train A} = \frac{90}{7} \times 7 = 63 \text{ m/s}$$

$$\text{Length of train A} = 63 \times 8 = 504 \text{ m}$$

$$\text{Length of train B} = 504 - 144 = 360 \text{ m}$$



IBPS RRB PO/Clerk
2021 Course (Batch 4)

START FREE TRIAL

Hence, option C is correct.

54. Ans. B.

Part of the tank that will be filled in 4

$$\frac{4}{16} = \frac{1}{4}$$

hours = $\frac{1}{4}$

$$\frac{1}{4} = \frac{3}{4}$$

$\frac{3}{4}$ th of the tank is filled by pipe A and C in 18 hours.

So, the time taken by pipe A and C to

$$\frac{18}{3} \times 4 = 24$$

fill the whole tank = 24 hours

Let the capacity of the tank be 48 litres

Amount of the work done by pipe A,

$$\frac{48}{16} = 3$$

litres

Amount of the work done by pipe A

$$\frac{48}{24} = 2$$

litres

Amount of the work done by pipe B in

$$\frac{1}{1.5} = \frac{2}{3}$$

one hour = $\frac{2}{3}$ litres

Amount of the work done by pipe A in

$$2 - \frac{2}{3} = \frac{4}{3}$$

litres

Time taken by pipe A alone to fill the

$$\frac{48 \times 3}{4} = 36$$

litres

Hence, option B is correct.

55. Ans. D.

According to the data provided in the

$$\frac{A-60}{40} = \frac{5}{1}$$

$$\Rightarrow A - 60 = 200$$

$$\Rightarrow A = 260$$

Again,

$$\frac{260+B}{50} = \frac{6}{1}$$

$$\Rightarrow 260 + B = 300$$

$$\Rightarrow B = 40$$

Hence, option D is correct.

56. Ans. A.

According to the data provided in the question, we get

$$\Rightarrow X + 3816 = X \left(1 + \frac{12}{100}\right)^2$$

$$\Rightarrow X + 3816 = X \left(1 + \frac{3}{25}\right)^2$$

$$\Rightarrow 625X + 3816 \times 625 = 784X$$

$$\Rightarrow 159X = 3816 \times 625$$

$$\Rightarrow X = 15000$$

$$\text{Sum invested by Ankur} = 15000 + 5000 = \text{Rs. } 20000$$

$$\text{Required simple interest} = \frac{20000 \times 18 \times 3}{100}$$

$$= \text{Rs. } 10800$$

Hence, option A is correct.

57. Ans. D.

Let the speed of the stream be x km/h

Speed of the boat in still water = 3.5x km/h

Speed of the boat in downstream = x + 3.5x = 4.5x km/h

Speed of the boat in upstream = 3.5x - x = 2.5x km/h

Sum of the speed of boat in downstream and upstream = (4.5x + 2.5x) = 7x km/h

$$\Rightarrow 84 = 7x$$

$$\Rightarrow x = 12$$

Speed of the boat in downstream = 4.5 × 12 = 54 km/h

Speed of the boat in upstream = 2.5 × 12 = 30 km/h

According to the data provided in the

question, we get

$$\frac{D}{54} + \frac{D+24}{30} = 12$$

$$\Rightarrow \frac{5D + 9D + 216}{270} = 12$$

$$\Rightarrow 14D + 216 = 12 \times 270$$

$$\Rightarrow 14D = 3240 - 216$$

$$\Rightarrow 14D = 3024$$

$$\Rightarrow D = 216$$

$$\text{Required time} = \frac{216-51}{30} = 5.5 \text{ hours}$$



IBPS RRB PO/Clerk
2021 Course (Batch 4)

START FREE TRIAL

Hence, option D is correct.

58. Ans. C.

According to the data provided in the question, we get

$$\Rightarrow \frac{4 \times 84\% \times 90\%}{7 \times 80\% \times (100-d)\%} = \frac{9}{16}$$

$$\Rightarrow \frac{54}{(100-d)} = \frac{9}{16}$$

$$\Rightarrow 96 = 100 - d$$

$$\Rightarrow d = 4$$

Hence, option C is correct.

59. Ans. D.

Bus P:

Total number of seats = $40 \times 3 = 120$

Number of vacant Aisle seats = $120 \times 20\% = 24$

Number of occupied Aisle seats = $40 - 24 = 16$

Number of occupied Middle seats = $40 \times 50\% = 20$

Number of vacant Middle seats = $40 - 20 = 20$

Number of vacant Window seats = $\frac{2}{2}$

$$(16 + 20) \times \frac{2}{3} = 24$$

Number of occupied Window seats = $40 - 24 = 16$

Bus Q:

Total number of seats = $40 \times 3 = 120$

Number of vacant Middle seats = $16 + 10 = 26$

Number of occupied Middle seats = $40 - 26 = 14$

Number of occupied Window seats = $\frac{(24 + 20 + 24)}{2}$

$$= 34$$

Number of vacant Window seats = $40 - 34 = 6$

Number of occupied Aisle seats = $\frac{40 + 12}{2}$

$$= 26$$

Number of vacant Aisle seats = $40 - 26 = 14$

Bus R:

Total number of vacant seats = $120 \times 37.5\% = 45$

Total number of occupied seats = $120 - 45 = 75$

Number of vacant Middle seats = $40 \times 50\% = 20$

Number of occupied Middle seats = $40 - 20 = 20$

Number of occupied Aisle seats = $75 \times \frac{2}{5} = 30$

Number of vacant Aisle seats = $40 - 30 = 10$

Number of vacant Window seats = $45 - 20 - 10 = 15$

Number of occupied Window seats = $40 - 15 = 25$

Seats	Bus P			Bus Q			Bus R		
	Window	Middle	Aisle	Window	Middle	Aisle	Window	Middle	Aisle
Vacant seats	24	20	24	6	26	14	15	20	10
Occupied seats	16	20	16	34	14	26	25	20	30
Total seats	40	40	40	40	40	40	40	40	40

From the table,

Required number of occupied seats = $16 + 20 + 16 + 34 + 14 + 26 + 25 + 20 + 30 = 201$

Hence, option D is correct.

60. Ans. B.

Bus P:

Total number of seats = $40 \times 3 = 120$

Number of vacant Aisle seats = $120 \times 20\% = 24$

Number of occupied Aisle seats = $40 - 24 = 16$

Number of occupied Middle seats = $40 \times 50\% = 20$

Number of vacant Middle seats = $40 - 20 = 20$

Number of vacant Window seats = $\frac{2}{2}$

$$(16 + 20) \times \frac{2}{3} = 24$$

Number of occupied Window seats = $40 - 24 = 16$

Bus Q:

Total number of seats = $40 \times 3 = 120$

Number of vacant Middle seats = $16 + 10 = 26$

Number of occupied Middle seats = $40 - 26 = 14$

Number of occupied Window seats = $\frac{(24 + 20 + 24)}{2}$

$$= 34$$



**IBPS RRB PO/Clerk
2021 Course (Batch 4)**

START FREE TRIAL

Number of vacant Window seats = 40
- 34 = 6

Number of occupied Aisle seats =
 $\frac{40 + 12}{2} = 26$

Number of vacant Aisle seats = 40 -
26 = 14

Bus R:

Total number of vacant seats = 120 ×
37.5% = 45

Total number of occupied seats = 120
- 45 = 75

Number of vacant Middle seats = 40
× 50% = 20

Number of occupied Middle seats = 40
- 20 = 20

Number of occupied Aisle seats =
 $75 \times \frac{2}{5} = 30$

Number of vacant Aisle seats = 40 -
30 = 10

Number of vacant Window seats = 45
- 20 - 10 = 15

Number of occupied Window seats =
40 - 15 = 25

Seats	Bus P			Bus Q			Bus R		
	Window	Middle	Aisle	Window	Middle	Aisle	Window	Middle	Aisle
Vacant seats	24	20	24	6	26	14	15	20	10
Occupied seats	16	20	16	34	14	26	25	20	30
Total seats	40	40	40	40	40	40	40	40	40

From the table,

Total occupied seats in bus Q = 34 +
14 + 26 = 74

Required cost = 74 × 1500 = Rs.
111000

Hence, option B is correct.

61. Ans. B.

Bus P:

Total number of seats = 40 × 3 = 120

Number of vacant Aisle seats = 120 ×
20% = 24

Number of occupied Aisle seats = 40
- 24 = 16

Number of occupied Middle seats = 40
× 50% = 20

Number of vacant Middle seats = 40
- 20 = 20

Number of vacant Window seats =
 $\frac{16 + 20}{2} = 18$

(16 + 20) × $\frac{2}{3}$ = 24

Number of occupied Window seats =
40 - 24 = 16

Bus Q:

Total number of seats = 40 × 3 = 120

Number of vacant Middle seats = 16
+ 10 = 26

Number of occupied Middle seats = 40
- 26 = 14

Number of occupied Window seats =
 $\frac{24 + 20 + 24}{2} = 34$

Number of vacant Window seats = 40
- 34 = 6

Number of occupied Aisle seats =
 $\frac{40 + 12}{2} = 26$

Number of vacant Aisle seats = 40 -
26 = 14

Bus R:

Total number of vacant seats = 120 ×
37.5% = 45

Total number of occupied seats = 120
- 45 = 75

Number of vacant Middle seats = 40
× 50% = 20

Number of occupied Middle seats = 40
- 20 = 20

Number of occupied Aisle seats =
 $75 \times \frac{2}{5} = 30$

Number of vacant Aisle seats = 40 -
30 = 10

Number of vacant Window seats = 45
- 20 - 10 = 15

Number of occupied Window seats =
40 - 15 = 25

Seats	Bus P			Bus Q			Bus R		
	Window	Middle	Aisle	Window	Middle	Aisle	Window	Middle	Aisle
Vacant seats	24	20	24	6	26	14	15	20	10
Occupied seats	16	20	16	34	14	26	25	20	30
Total seats	40	40	40	40	40	40	40	40	40

Total vacant seats = 24 + 20 + 24 +
6 + 26 + 14 + 15 + 20 + 10 = 159

Total loss = 159 × 800 = Rs. 127200

Hence, option B is correct.

62. Ans. D.



**IBPS RRB PO/Clerk
2021 Course (Batch 4)**

START FREE TRIAL

Bus P:

Total number of seats = $40 \times 3 = 120$

Number of vacant Aisle seats = $120 \times 20\% = 24$

Number of occupied Aisle seats = $40 - 24 = 16$

Number of occupied Middle seats = $40 \times 50\% = 20$

Number of vacant Middle seats = $40 - 20 = 20$

Number of vacant Window seats = $(16 + 20) \times \frac{2}{3} = 24$

Number of occupied Window seats = $40 - 24 = 16$

Bus Q:

Total number of seats = $40 \times 3 = 120$

Number of vacant Middle seats = $16 + 10 = 26$

Number of occupied Middle seats = $40 - 26 = 14$

Number of occupied Window seats = $\frac{(24 + 20 + 24)}{2} = 34$

Number of vacant Window seats = $40 - 34 = 6$

Number of occupied Aisle seats = $\frac{40 + 12}{2} = 26$

Number of vacant Aisle seats = $40 - 26 = 14$

Bus R:

Total number of vacant seats = $120 \times 37.5\% = 45$

Total number of occupied seats = $120 - 45 = 75$

Number of vacant Middle seats = $40 \times 50\% = 20$

Number of occupied Middle seats = $40 - 20 = 20$

Number of occupied Aisle seats = $75 \times \frac{2}{5} = 30$

Number of vacant Aisle seats = $40 - 30 = 10$

Number of vacant Window seats = $45 - 20 - 10 = 15$

Number of occupied Window seats = $40 - 15 = 25$

Seats	Bus P			Bus Q			Bus R		
	Window	Middle	Aisle	Window	Middle	Aisle	Window	Middle	Aisle
Vacant seats	24	20	24	6	26	14	15	20	10
Occupied seats	16	20	16	34	14	26	25	20	30
Total seats	40	40	40	40	40	40	40	40	40

Number of occupied seats in bus R = $25 + 20 + 30 = 75$

Number of seats occupied by females in bus R = $75 \times 40\% = 30$

Number of seats occupied by females below the age of 25 in bus R = $30 \times 60\% = 18$

Hence, option D is correct.

63. Ans. C.

Bus P:

Total number of seats = $40 \times 3 = 120$

Number of vacant Aisle seats = $120 \times 20\% = 24$

Number of occupied Aisle seats = $40 - 24 = 16$

Number of occupied Middle seats = $40 \times 50\% = 20$

Number of vacant Middle seats = $40 - 20 = 20$

Number of vacant Window seats = $(16 + 20) \times \frac{2}{3} = 24$

Number of occupied Window seats = $40 - 24 = 16$

Bus Q:

Total number of seats = $40 \times 3 = 120$

Number of vacant Middle seats = $16 + 10 = 26$

Number of occupied Middle seats = $40 - 26 = 14$

Number of occupied Window seats = $\frac{(24 + 20 + 24)}{2} = 34$

Number of vacant Window seats = $40 - 34 = 6$

Number of occupied Aisle seats = $\frac{40 + 12}{2} = 26$

Number of vacant Aisle seats = $40 - 26 = 14$

Bus R:



**IBPS RRB PO/Clerk
2021 Course (Batch 4)**

START FREE TRIAL

Total number of vacant seats = $120 \times 37.5\% = 45$

Total number of occupied seats = $120 - 45 = 75$

Number of vacant Middle seats = $40 \times 50\% = 20$

Number of occupied Middle seats = $40 - 20 = 20$

Number of occupied Aisle seats = $75 \times \frac{2}{5} = 30$

Number of vacant Aisle seats = $40 - 30 = 10$

Number of vacant Window seats = $45 - 20 - 10 = 15$

Number of occupied Window seats = $40 - 15 = 25$

Seats	Bus P			Bus Q			Bus R		
	Window	Middle	Aisle	Window	Middle	Aisle	Window	Middle	Aisle
Vacant seats	24	20	24	6	26	14	15	20	10
Occupied seats	16	20	16	34	14	26	25	20	30
Total seats	40	40	40	40	40	40	40	40	40

Difference between the vacant seats of bus P and R = $24 - 15 = 9$

Required percentage = $\frac{9}{15} \times 100 = 60\%$

Hence, option C is correct.

64. Ans. C.

Statement I:

According to the data provided in the question, we get

$$\begin{aligned} (135000 - X) &= \frac{X \times 4 \times 2}{100} \\ \Rightarrow 1350000 - 100X &= 8X \\ \Rightarrow 1350000 &= 108X \\ \Rightarrow X &= 125000 \end{aligned}$$

Statement I alone is sufficient to answer the question.

Statement II:

According to the data provided in the question, we get

$$\begin{aligned} 10000 &= \frac{X \times 4 \times 2}{100} \\ \Rightarrow 1000000 &= 8X \\ \Rightarrow X &= 125000 \end{aligned}$$

Statement II alone is sufficient to answer the question.

Data in either statement I alone or statement II alone is sufficient to answer the question.

Hence, option C is correct.

65. Ans. B.

Let the height of the cylinder be $3x$ cm and radius of the cylinder be r cm.

Statement I:

Radius of the cylinder = x cm

Statement I alone is not sufficient to answer the question.

Statement II:

Curved surface area = $6\pi rx$

$$924 = 6 \times \frac{22}{7} \times r \times x$$

$$rx = 49 \dots (1)$$

Total surface area = $2\pi r(r + 3x)$

$$1232 = 2 \times \frac{22}{7} \times r(r + 3x)$$

$$196 = r^2 + 3rx$$

$$196 = r^2 + 147$$

$$r^2 = 49$$

$$r = 7$$

After putting the value of r in equation 1, we get

$$x = 7$$

Height of the cylinder = $3x$ cm = 21 cm

Statement II alone is sufficient to answer the question.

Hence, option B is correct.

66. Ans. D.

Statement I:

Let the cost price of the product be Rs. $100x$

Marked price of the product = Rs. $125x$

Selling price of the product = Rs. $112.5x$

Statement I alone is not sufficient to answer the question.

Statement II:

Selling price of the product = Rs. 450

$$\text{Marked price of the product} = \frac{450}{90} \times 100 = \text{Rs. } 500$$

Statement II alone is not sufficient to answer the question.



**IBPS RRB PO/Clerk
2021 Course (Batch 4)**

START FREE TRIAL

Statement I and II together:

Marked price of the product = Rs. 500

$$\text{Cost price of the product} = \frac{500}{125} \times 100 = \text{Rs. 400}$$

Statement I and II both are necessary to answer the question.

Hence, option D is correct.

67. Ans. C.

City	Total number of people	Number of people use Desktop	Number of people use Laptop	Number of people use Mac book
A	$500 \times 24\% = 120$	$120 \times 35\% = 42$	$120 \times 40\% = 48$	$120 - 42 - 48 = 30$
B	$500 \times 18\% = 90$	$90 \times 30\% = 27$	$90 \times 50\% = 45$	$90 - 27 - 45 = 18$
C	$500 \times 28\% = 140$	$140 \times 20\% = 28$	$140 \times 25\% = 35$	$140 - 28 - 35 = 77$
D	$500 \times 30\% = 150$	$150 \times 32\% = 48$	$150 \times 48\% = 72$	$150 - 48 - 72 = 30$

$$48 + 45 + 35 + 72$$

$$\text{Required average} = \frac{200}{4} = 50$$

Hence, option C is correct.

68. Ans. A.

City	Total number of people	Number of people use Desktop	Number of people use Laptop	Number of people use Mac book
A	$500 \times 24\% = 120$	$120 \times 35\% = 42$	$120 \times 40\% = 48$	$120 - 42 - 48 = 30$
B	$500 \times 18\% = 90$	$90 \times 30\% = 27$	$90 \times 50\% = 45$	$90 - 27 - 45 = 18$
C	$500 \times 28\% = 140$	$140 \times 20\% = 28$	$140 \times 25\% = 35$	$140 - 28 - 35 = 77$
D	$500 \times 30\% = 150$	$150 \times 32\% = 48$	$150 \times 48\% = 72$	$150 - 48 - 72 = 30$

Total number of people who use Mac book in city A and B together = $30 + 18 = 48$

$$\text{Required percentage} = \frac{48}{500} \times 100 = 9.6\%$$

Hence, option A is correct.

69. Ans. D.

City	Total number of people	Number of people use Desktop	Number of people use Laptop	Number of people use Mac book
A	$500 \times 24\% = 120$	$120 \times 35\% = 42$	$120 \times 40\% = 48$	$120 - 42 - 48 = 30$
B	$500 \times 18\% = 90$	$90 \times 30\% = 27$	$90 \times 50\% = 45$	$90 - 27 - 45 = 18$
C	$500 \times 28\% = 140$	$140 \times 20\% = 28$	$140 \times 25\% = 35$	$140 - 28 - 35 = 77$
D	$500 \times 30\% = 150$	$150 \times 32\% = 48$	$150 \times 48\% = 72$	$150 - 48 - 72 = 30$

Number of males who uses desktop in city C = $28 \times 75\% = 21$

Hence, option D is correct.

70. Ans. B.

City	Total number of people	Number of people use Desktop	Number of people use Laptop	Number of people use Mac book
A	$500 \times 24\% = 120$	$120 \times 35\% = 42$	$120 \times 40\% = 48$	$120 - 42 - 48 = 30$
B	$500 \times 18\% = 90$	$90 \times 30\% = 27$	$90 \times 50\% = 45$	$90 - 27 - 45 = 18$
C	$500 \times 28\% = 140$	$140 \times 20\% = 28$	$140 \times 25\% = 35$	$140 - 28 - 35 = 77$
D	$500 \times 30\% = 150$	$150 \times 32\% = 48$	$150 \times 48\% = 72$	$150 - 48 - 72 = 30$

From the table,

Number of desktop users in city D = 48

Number of Dell desktop users in city D = $48 \times 25\% = 12$

Number of Lenovo desktop users in city D = $48 \times 37.5\% = 18$

Number of HP desktop users in city D = $48 - 12 - 18 = 18$

Required difference = $18 - 12 = 6$

Hence, option B is correct.

71. Ans. B.

City	Total number of people	Number of people use Desktop	Number of people use Laptop	Number of people use Mac book
A	$500 \times 24\% = 120$	$120 \times 35\% = 42$	$120 \times 40\% = 48$	$120 - 42 - 48 = 30$
B	$500 \times 18\% = 90$	$90 \times 30\% = 27$	$90 \times 50\% = 45$	$90 - 27 - 45 = 18$
C	$500 \times 28\% = 140$	$140 \times 20\% = 28$	$140 \times 25\% = 35$	$140 - 28 - 35 = 77$
D	$500 \times 30\% = 150$	$150 \times 32\% = 48$	$150 \times 48\% = 72$	$150 - 48 - 72 = 30$

Required ratio = $90 : (30 + 18) = 15 : 8$

Hence, option B is correct.

72. Ans. D.

City	Total number of people	Number of people use Desktop	Number of people use Laptop	Number of people use Mac book
A	$500 \times 24\% = 120$	$120 \times 35\% = 42$	$120 \times 40\% = 48$	$120 - 42 - 48 = 30$
B	$500 \times 18\% = 90$	$90 \times 30\% = 27$	$90 \times 50\% = 45$	$90 - 27 - 45 = 18$
C	$500 \times 28\% = 140$	$140 \times 20\% = 28$	$140 \times 25\% = 35$	$140 - 28 - 35 = 77$
D	$500 \times 30\% = 150$	$150 \times 32\% = 48$	$150 \times 48\% = 72$	$150 - 48 - 72 = 30$

The total number of people uses laptop and Mac book in city D together = $30 + 72 = 102$

Difference = $120 - 102 = 18$

$$\text{Required percentage} = \frac{18}{120} \times 100 = 15\%$$

Hence, option D is correct.

73. Ans. B.

Abhishek invested the amount in the business for 8 months.

According to the data provided in the question, we get

$$\frac{12500 \times 12}{24} = \frac{25}{24}$$

$$\Rightarrow X \times 8$$

$$\Rightarrow 12500 \times 12 \times 3 = 25X$$

$$\Rightarrow X = 18000$$

Profit share ratio of Rajeev, Pankaj and Abhishek = $(12500 \times 12) : (16000 \times 12) : (18000 \times 8) = 25 : 32 : 24$

$$\text{Total profit} = \frac{24000}{32} \times (25 + 32 + 24) = \text{Rs. 60750}$$

Hence, option B is correct.

74. Ans. C.

If the profit is 50%, then the selling price of the article = $1500 \times 150\% = \text{Rs. 2250}$

$$\text{Marked price of the article} = \frac{2250}{(100 - X)} \times 100 \dots (1)$$

If the profit is $33\frac{1}{3}\%$, then the selling price of the article = $1500 \times 133\frac{1}{3}\% = \text{Rs. 2000}$



**IBPS RRB PO/Clerk
2021 Course (Batch 4)**

START FREE TRIAL

$$\text{Marked price of the article} = \frac{2000}{(100-2X)} \times 100 \quad \dots(2)$$

From equation (1) and (2)

$$\frac{2250}{(100-X)} \times 100 = \frac{2000}{(100-2X)} \times 100$$

$$\Rightarrow 2250(100 - 2X) = 2000(100 - X)$$

$$\Rightarrow 225000 - 4500X = 200000 - 2000X$$

$$\Rightarrow 25000 = 2500X$$

$$\Rightarrow X = 10$$

$$\text{Marked price of the article} = \frac{2250}{90} \times 100 = \text{Rs. 2500}$$

Hence, option C is correct.

75. Ans. A.

Let the total income be Rs. 100x

Amount spent on food = Rs. 30x

Amount spent on rent = Rs. 25x

Remaining income = Rs. 100x - 30x - 25x = Rs. 55x

Amount spent on education = 55x × 40% = Rs. 22x

Saving = 55x - 22x = Rs. 33x

$$\Rightarrow 3630 = 33x$$

$$\Rightarrow x = 110$$

$$\text{Required difference} = (30 - 22) \times 110 = \text{Rs. 880}$$

Hence, option A is correct.

76. Ans. E.

Let the length of the rectangle be 11x m

Breadth of the rectangle = 6x m

According to the data provided in the question, we get

$$\Rightarrow (11x - 2)(6x + 6) = 1260$$

$$\Rightarrow 66x^2 + 66x - 12x - 12 = 1260$$

$$\Rightarrow 66x^2 + 54x = 1272$$

$$\Rightarrow 11x^2 + 9x - 212 = 0$$

$$\Rightarrow 11x^2 - 44x + 53x - 212 = 0$$

$$\Rightarrow 11x(x - 4) + 53(x - 4) = 0$$

$$\Rightarrow (11x + 53)(x - 4) = 0$$

$$\Rightarrow x = 4, -\frac{53}{11}$$

Length and breadth can't be negative.

So, the value of x = 4

Length of the rectangle = 44 m

Breadth of the rectangle = 24 m

$$\text{Perimeter of the rectangle} = 2 \times (44 + 24) = 136 \text{ m}$$

Hence, option E is correct.

77. Ans. C.

Total age of A, B, C, D and E = 54 × 5 = 270 years

Total age of A, B, C, D, E and F = 51 × 6 = 306 years

Total age of B and E = 48 × 2 = 96 years

Age of F = 306 - 270 = 36 years

Total age of A, C, D = 270 - 96 = 174 years

Total age of A, C, D and F = 174 + 36 = 210

$$\text{Required average} = \frac{210}{4} = 52.5 \text{ years}$$

Hence, option C is correct.

78. Ans. D.

Let the total work be 96 units (LCM of 32 and 96)

Amount of the work done by Anant in

$$\frac{96}{32} \text{ one day} = 3 \text{ units}$$

Amount of the work done by Sahil in

$$\frac{96}{96} \text{ one day} = 1 \text{ unit}$$

Time taken by Anant and Sahil to

$$\frac{96}{3+1} \text{ complete a work} = 24 \text{ days}$$

Time taken by Anant and Sahil to

complete 75% of the work = 18 days

So, X = 18

Time taken by Chitra to complete

25% of the work = (18 - 6) = 12 days

Time taken by Chitra to complete the

$$\frac{12}{25} \times 100 \text{ work} = 48 \text{ days}$$

Amount of the work done by Chitra in

$$\frac{96}{48} \text{ one day} = 2 \text{ units}$$

Time taken by Sahil and Chitra to

$$\frac{96}{2+1} \text{ complete the work together} = 32 \text{ days}$$

Hence, option D is correct.

79. Ans. B.



**IBPS RRB PO/Clerk
2021 Course (Batch 4)**

START FREE TRIAL

Number of ways of picking three masks out of 16 masks = ${}^{16}C_3 = 560$
 Number of ways of picking 3 masks of same colour = ${}^4C_3 + {}^5C_3 + {}^7C_3 = (4 + 10 + 35) = 49$

Probability of picking three masks of same color = $\frac{49}{560} = \frac{7}{80}$

Required probability = 1 - probability of picking three masks of same colour

$$\Rightarrow 1 - \frac{7}{80} = \frac{73}{80}$$

Hence, option B is correct.

80. Ans. A.

Total cost price of the article = Rs. (x + 2250)

Marked price of the article = (x + 2250) × 1.80 = Rs. (1.8x + 4050)

Selling price of the article = (1.8x + 4050) × 0.80 × 0.7

AT,

$$x + 2250 + 744 = (1.8x + 4050) \times 0.80 \times 0.7$$

$$x + 2994 = 1.008x + 2268$$

$$0.008x = 726$$

$$x = 90,750$$

81. Ans. A.

- International Mountain Day is celebrated every year on 11th December by the United Nations.
- This year the day is being celebrated under the theme "Mountain Biodiversity".
- The UN declared the International Year of Mountains in 2002.
- The first international day was celebrated for the first time the following year, 2003.
- The mountains are of utmost importance and these are home to 15% of the world's population and host about half of the world's biodiversity hotspots.

82. Ans. C.

Maximum limit of tarun under mudra bank loan yojana is 10 Lakhs.

The scheme is further classified into three categories namely Shishu, Kishor and Tarun.

▪ **Shishu scheme-** This is the category that is required by most startups. This category is suitable for those who are about to start their business and they require a financial support. They can avail a loan of up to **Rs. 50,000.**

▪ **Kishor scheme-** This is meant for those who have already started their business, but they require the money for getting established. Such units can avail a loan of **Rs. 50,000 up to Rs. 5 lakhs.**

▪ **Tarun scheme-** Those businesses which are already established and they are completely set up, but they require some financial support so that they can continue their business as it is. These business units can avail a loan of **up to Rs. 10 lakh.**

83. Ans. C.

- The Reserve Bank of India (RBI) released guidelines for 'on tap' Licensing of Small Finance Banks in the Private Sector. Now payments banks willing to convert themselves into small finance banks (SFBs) can apply for such a licence only after 5 years of operations.
- The licensing window will be open on-tap. In the guideline, the RBI has double the minimum capital for setting up an SFB to ₹200 crores.
- For primary (urban) co-operative banks (UCBs), non-banking financial companies, micro-financial institutions (MFIs), local regional bank/payment banks which wish to become SFBs the minimum required capital condition of Rs 200 crore will not be applicable.
- But the UCBs want to become SFB will require net worth ₹100 crores, which will have to be increased to



**IBPS RRB PO/Clerk
2021 Course (Batch 4)**

START FREE TRIAL

₹200 crores within five years from the date of commencement of business.

84. Ans. B.

- The book titled 'A Song of India' authored by Ruskin Bond to be released on July 20, 2020, which will mark the 70th year of the author's literary career.

- The book is the 4th instalment in his memoir series.

- The book portrays his unknown life before he became a successful author. It is published by Puffin Books, an imprint of Penguin Random House India.

85. Ans. D.

World Population day is an annual event, observed on July 11 every year, which seeks to raise awareness of global population issues. The event was established by the Governing Council of the United Nations Development Programme in 1989.

86. Ans. A.

- * The book titled 'How to Be a Writer' authored by Ruskin Bond was published by HarperCollins India. The book gives practical advice for every person who is aspiring to write and be published.

- * The book gives a glimpse into the writing credo of Ruskin Bond, the author who has over 70 years of successful writing career.

- * The book has been written in the humorous style of Ruskin Bond.

- * As per Ruskin Bond, to become a writer, the person must have the following qualities-love of books, languages and life, an observant eye, a good memory, enthusiasm, optimism and persistence.

87. Ans. B.

Special Drawing Right SDR. The SDR is an international reserve asset, created by the IMF in 1969 to supplement its member countries' official reserves. As of March 2016, 204.1 billion SDRs (equivalent to

about \$285 billion) had been created and allocated to members. SDRs can be exchanged for freely usable currencies.

88. Ans. D.

- Economic development, Caring Society and Aspirational India are the themes of Budget 2020-2021.

- In this Budget our finance focuses on the economic development of the country with people care for one another.

89. Ans. E.

- The government is going to come out with a decision on 74% Foreign Direct Investment (FDI) in defence and a notification is likely in the next few days.

- The second draft of the Defence Procurement Procedure (DPP) 2020, now renamed as the Defence Acquisition Procedure (DAP) 2020, was put out in public domain for comments from stakeholders and public.

90. Ans. B.

- The Statue of Unity is a colossal statue of Indian statesman and independence activist Sardar Vallabhbhai Patel (1875-1950) who was the first Home Minister of independent India.

- It is located in the state of Gujarat, India. It is the world's tallest statue with a height of 182 metres (597 ft).

- It is located on a river island facing the Sardar Sarovar Dam on river Narmada in Kevadiya colony, 100 kilometres (62 mi) southeast of the city of Vadodara.

- It was designed by Indian sculptor Ram V. Sutar and was inaugurated by Indian Prime Minister Narendra Modi on 31 October 2018, the 143rd anniversary of Patel's birth.

91. Ans. A.

- Who Will Cry When You Die is a book written by Indian born writer Robin Sharma. The book was first published



**IBPS RRB PO/Clerk
2021 Course (Batch 4)**

START FREE TRIAL

in 1999. This was the third book written by the author in the series The Monk Who Sold His Ferrari.

92. Ans. C.

- The 2020 G20 Presidency will focus discussions, forums, working groups and Ministerial Meetings under the theme of "Realizing Opportunities of the 21st Century for All".

- The Summit was held under the chairmanship of Saudi Arabia.

93. Ans. B.

- Keeping in view the overall inflation and rise in agriculture input cost over the years since 2010, it has been decided to raise the limit for collateral free agricultural loans from the existing level of ₹1 lakh to ₹1.6 lakh.

94. Ans. C.

- Capital Small Finance Bank (formerly Capital Local Area Bank Ltd) is India's first small finance bank started its banking operations in April 2016 in Jalandhar, Punjab.

- The bank got the license of Small Finance Bank from Reserve Bank of India (RBI) in March 2016.

95. Ans. E.

- WHO's global strategy towards eliminating cervical cancer aims to set the world on the right track by 2030, but it is just the beginning.

- At this pace, global elimination of cervical cancer is not predicted until 2120.

- While high HPV vaccination coverage is the primary prevention intervention, ensuring every woman has two cervical screenings in her life would accelerate elimination by 11 – 31 years, depending on the country.

- If no action is taken, cervical cancer deaths will rise almost 50% by 2030. Approval of the draft global strategy at the WHO World Health Assembly in 2020, and investment in mechanisms to deliver it, is vital.

96. Ans. A.

- The 2019 Cricket World Cup final was held between England and New Zealand.

- England won the trophy under the captain Eoin Morgan.

- Under his captaincy, England won the 2019 ICC Cricket World Cup, the first time they had won the tournament.

- As of December 2019, Morgan is the all-time leading run scorer and most capped player for England in ODI matches.

97. Ans. C.

- Operation Trident was an offensive operation launched by the Indian Navy on Pakistan's port city of Karachi during the Indo-Pakistani War of 1971. Operation Trident saw the first use of anti-ship missiles in combat in the region.

98. Ans. B.

- As per the "Digital Quality of Life Index 2020", in terms of e-infrastructure, India occupies 79th place, ranking below countries including Guatemala and Sri Lanka.

- India has ranked the 9th position in terms of Internet affordability.

- In terms of e-government, India occupies the 15th place globally.

- In terms of Internet Quality, India has been ranked 78th position.

- Overall, India ranked 57th on the Digital Quality of Life Index 2020.

- Denmark ranked first in this index.

- The index was prepared by Surfshark.

99. Ans. A.

- Ten Public Sector Undertaking (PSU) banks were amalgamated into four banks.

- With this, the number of public sector banks in India come down to 12 from 27.

- Oriental Bank of Commerce (OBC) and United Bank of India merged into Punjab National Bank (PNB).



**IBPS RRB PO/Clerk
2021 Course (Batch 4)**

START FREE TRIAL

- Syndicate Bank merged into Canara Bank, which will make it the fourth-largest public sector lender.

- Indian Bank was merged with Allahabad Bank.

- Union Bank of India merged with Andhra Bank and Corporation Bank.

100. Ans. D.

- In 2020-21, the Ministry of Defence has been allocated Rs 4,71,378 crore.

- This includes expenditure for salaries of armed forces and civilians, pensions, modernisation of armed forces, production establishments, maintenance and research and development organisations.

101. Ans. A.

- The Ministry of Micro, Small and Medium Enterprises (MSME) has launched CHAMPIONS - Creation and Harmonious Application of Modern Processes for Increasing the Output and National Strength portal.

- It is a Technology driven Control Room-Cum-Management Information System. The system utilising modern ICT tools is aimed at assisting Indian MSMEs march into big league as National and Global CHAMPIONS.

102. Ans. B.

- Introduced in 2015, the Pilgrimage Rejuvenation and Spiritual Augmentation Drive (PRASAD) is a government scheme that focuses on identifying and developing the pilgrim sites across the country to enrich the religious tourism experience.

- It was launched by Union Ministry of Tourism.

103. Ans. B.

- In the backdrop of the disruption in normal classroom teaching owing to Covid-19 lockdown, the Indian Institute of Technology (IIT), Kanpur has developed an innovative virtual classroom aid titled 'Mobile Masterjee'.

- The classroom-to-home teaching setup is designed to record the

lectures/instructions by the teachers while using smartphones.

- 'Mobile Masterjee' can capture the videos in horizontal (table) and vertical (blackboard) positions.

104. Ans. C.

- * The government is committed to doubling farmers' income by 2022 and the budget aims to boost the income of people and enhance their purchasing power.

- * Finance Minister announced 16 action points plan for farmers, towards the goal of doubling farmers income.

- * These measures are underlined by the FM for the agriculture sector

- * The government allocated 2.83 lakh crore rupees for agriculture and allied activities, irrigation and rural development in 2020-21 budget.

105. Ans. A.

- * Prime Minister Shri Narendra Modi launched the technology platform CHAMPIONS which stands for Creation and Harmonious Application of Modern Processes for Increasing the Output and National Strength.

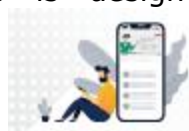
- * As the name suggests, the portal is basically for making the smaller units big by solving their grievances, encouraging, supporting, helping and handholding. It is a real one-stop-shop solution of MSME Ministry.

- * This ICT based system is set up to help the MSMEs in present difficult situation and also to handhold them to become national and international champions.

106. Ans. C.

- * MGNREGA scheme was started in the year 2006 under Mahatma Gandhi National Rural Employment Guarantee Act (MGNREGA), 2005.

- * It legally guarantees 100 days of employment given to an adult member of every rural household; mostly unskilled and manual work.



**IBPS RRB PO/Clerk
2021 Course (Batch 4)**

START FREE TRIAL

* It is also known as Mahatma Gandhi National Rural Employment Guarantee Act, 2005 (MGNREGA).

107. Ans. D.

* Prime Minister (PM) Narendra Modi virtually inaugurated 2 Railway projects for the Eastern Dedicated Freight Corridor (EDFC) namely the 351-Kms long New Bhaupur-New Khurja section in Uttar Pradesh (UP) which has been built at a cost of INR 5,750 crores and Operational Control Centre (OCC) at Prayagraj, Uttar Pradesh.

* It is expected to be one of the largest control centers in the world.

* Union Minister for Railways, Piyush Goyal & Chief Minister of Uttar Pradesh, Yogi Adityanath were present during the event.

108. Ans. B.

* The Central Vigilance Commission (CVC) has constituted Advisory Board for Banking Frauds (ABBF) headed by former Vigilance Commissioner T M Bhasin to examine bank fraud over Rs 50 crore and recommend action.

* The panel in its previous avatar called the Advisory Board on Bank, Commercial and Financial Frauds.

* The ABBF, formed in consultation with the RBI, would function as the first level of examination of all large fraud cases before recommendations or references are made to the investigative agencies by the respective public sector banks (PSBs).

109. Ans. B.

Under its School Bag Policy 2020, the state government has prescribed weight limits for school bags for students of different classes. School bags should not be more than 10% of the bodyweight of students across classes I to X and there should be no bags in pre-primary students.

110. Ans. C.

* To meet the growing need of micro and small enterprises, five public sector banks have decided to extend in-principle approval of loan up to ₹5 crore under the "PSB Loans in 59 Minutes" scheme.

* The loans will be approved by State Bank of India, Union Bank of India, Oriental Bank of Commerce, Corporation Bank, and Andhra Bank on the psbloansin59minutes.com.

* The portal was launched by the Narendra Modi government in November to provide loans up to ₹1 crore to micro, small and medium enterprises (MSMEs) in just 59 minutes or less than an hour.

* The platform has helped reduce turnaround time for loan processes in such a way that MSMEs get an eligibility letter and an in-principle approval in 59 minutes and can choose the bank of their choice. After the approval letter is received, the loan is expected to be disbursed in 7-8 working days. The value of the contactless business loans offered range from ₹1 lakh to ₹5 crore. The rate of interest starts at 8.5%.

111. Ans. D.

Priority sector loans to the following borrowers are eligible to be considered under Weaker Sections category:-

1. Small and Marginal Farmers
2. Artisans, village and cottage industries where individual credit limits do not exceed ₹ 0.1 million
3. Beneficiaries under Government Sponsored Schemes such as National Rural Livelihoods Mission (NRLM), National Urban Livelihood Mission (NULM) and Self Employment Scheme for Rehabilitation of Manual Scavengers (SRMS)



**IBPS RRB PO/Clerk
2021 Course (Batch 4)**

START FREE TRIAL

4. Scheduled Castes and Scheduled Tribes

5. Beneficiaries of Differential Rate of Interest (DRI) scheme

6. Self Help Groups

7. Distressed farmers indebted to non-institutional lenders

8. Distressed persons other than farmers, with loan amount not exceeding ₹ 0.1 million per borrower to prepay their debt to non-institutional lenders

9. Individual women beneficiaries up to ₹ 0.1 million per borrower

10. Persons with disabilities

11. Overdraft limit to PMJDY account holder upto ₹ 10,000/- with age limit of 18-65 years.

12. Minority communities as may be notified by Government of India from time to time

112. Ans. A.

The Ministry of Heavy Industries and Public Enterprises is an executive agency of the Government of India that administers 48 central public sector enterprises (PSEs) and assists them in their effort to improve capacity utilization and increase profitability, generate resources and re-orient strategies to become more competitive. The ministry serves as an interface between PSEs and other agencies for long-term policy formulation. The ministry also encourages the restructuring of PSEs to make their operations competitive and viable on a long-term and sustainable basis.

113. Ans. C.

* The Reserve Bank of India (RBI) has released the National Strategy for Financial Education (NSFE) for the next five years (2020-2025).

* Under this, the central bank has recommended a '5-Core Actions' approach for dissemination of financial education in the country. The first such strategy for

implementation was released in the year 2013.

* On June 18, 2020, as per RBI, the strategy has been approved by the FSDC-SC in its 24th meeting. However, the document was made public on August 20, 2020.

114. Ans. E.

* The scheme will help in enhancing fish production from 137.58 lakh metric tons (2018-19) to 220 lakh metric tons by 2024-25.

* The scheme will sustain average annual growth of about 9% in fish production

* The scheme will help in boosting an increase in the contribution of GVA of the fisheries sector to the Agriculture GVA from 7.28% in 2018-19 to about 9% by 2024-25.

* The scheme will double export earnings from Rs.46,589 crores (2018-19) to about Rs.1,00,000 crores by 2024-25.

* The scheme will improve productivity in aquaculture from the present national average of 3 tonnes to about 5 tonnes per hectare.

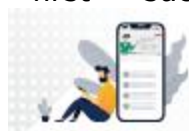
* The scheme will decrease the post-harvest losses from the reported 20-25% to about 10%.

* The scheme will help in the improvement of domestic fish consumption from about 5-6 kg to about 12 kg per capita.

115. Ans. A.

The 'Aarogya Setu' tracking app, which is already available on Google Play Store on Android smartphones and App Store for iPhones, will help track the coronavirus infection by using the smartphone's GPS system and Bluetooth and provide information that will help in determining if you have been near a Covid-19 infected person or not.

First spotted by The Next Web, the application determines if you are at risk by scanning through a database



**IBPS RRB PO/Clerk
2021 Course (Batch 4)**

START FREE TRIAL

of known cases across India, and also via location.

116. Ans. A.

* The Reserve Bank of India has published its first ever 'nowcast,' which is an estimate of GDP based on high-frequency data.

* According to the report Gross domestic product contracted 8.6% in the quarter ended September.

* The economy had slumped about 24% in April to June.

117. Ans. A.

* Prime Minister Narendra Modi dedicated to the nation the 306-km Madar-Rewari link of the Western Dedicated Freight Corridor; and flagged off 1.5-km, double stack loaded train between New Ateli in Haryana and New Kishangarh in Rajasthan on the freight corridor.

* It is a big achievement, said Modi, making India one of the select countries to have implemented such a project (run 1.5 km long double stack containers under electric wire).

118. Ans. D.

* UNESCO's Education Sector is the largest in UNESCO with some 400 staff working at the Paris headquarters and spread across a global network of 53 field offices and specialized institutes and centres.

* Since 2015, UNESCO has a new role leading the coordination and monitoring of the Global Education 2030 Agenda. The vision of the Education Sector, under the authority of the Assistant Director-General for Education, is captured in Sustainable Development Goal 4, which aims to "ensure inclusive and equitable quality education and promote lifelong learning opportunities for all". The roadmap for the agenda is the Framework for Action.

* With its close links with education ministries and other partners in 193

countries, UNESCO is in a key position to press for action and change.

119. Ans. B.

* Government bonds are bonds issued by the central government and supervised by the Reserve Bank of India (RBI).

* When the government is in need of finance for any project which is for the welfare of the public, the government will sell the bonds to the public to raise the fund.

* The government would pay the regular or fixed interest rate to the investors who buy the bonds. The face value of the bonds will be paid to investors on the maturity date.

* Government bonds in India offer many benefits to investors. Read more to know the benefits, and how to buy government bonds in India.

120. Ans. B.

* With an aim to provide last mile electrical connectivity and ensure electrification of all the willing rural and urban households, the Prime Minister launched Pradhan Mantri Sahaj Bijli Har Ghar Yojana, also known as Saubhagya Scheme.

* The nodal agency for implementation of the scheme across the country would be – the Rural Electrification Corporation Limited (REC).

121. Ans. C.

The given sentence in the passage is incorrect as it uses the wrong preposition (between) to establish the relation between the action and the actors.

Option A is incorrect as the verb 'increased' is a past tense verb being used to describe a present continuous situation.

Option B is incorrect as the article 'an' is missing preceding the verb 'increase'. Also, a preposition like 'in' is required to link the verb with the situation.



**IBPS RRB PO/Clerk
2021 Course (Batch 4)**

START FREE TRIAL

Option C is correct as the among is the correct preposition to use to establish the relation between the action and the actors. *Between* is used when naming distinct, individual items (can be 2, 3, or more). *Among* is used when the items are part of a group, or are not specifically named (MUST be 3 or more).

Option D is incorrect as it uses the wrong preposition (across) to establish the relation between the action and the actors. Across is used to express position or orientation.

Thus, option C is the correct answer.

122. Ans. D.

Intricacy means the quality of being intricate or complex. The meaning of the given options are as follows –

Involution - the process of complicating something, or the state of being complicated.

Simplicity - the quality of being simple.

Comprehensible - able to be understood in a simple manner.

From the above meanings it is clear that *simplicity* and *comprehensible* are antonyms for *intricacy*. Hence, options II and III are both correct.

Thus, option D is the correct answer.

123. Ans. E.

The following line from the passage states – ‘... a significant percentage of young adults were found to be "financially precarious" because they had poor financial literacy and lacked money management skills and income stability.’

From the above line we can say based on facts that financial precariousness in young adults occur due to three things –

- Poor financial literacy
- Lack of money management skills
- Income instability

Thus, the three given statements are all correct as answers for the given

question. This makes option E the correct answer.

124. Ans. A.

The given passage is a study on the financial awareness among modern day youth. The passage points out that it has been observed that often the youth lack financial literacy. It points out that in the modern world today owing to changes in the social support structures, investments are no longer managed by governments or the employers. The financial services and goods have also increased and are more complex than previous times. This puts the onus of financial investment and management on the individuals' shoulders. Hence it is necessary to have financial literacy in the modern world. These points are covered in statement I making it the correct answer.

Hence option A is the correct answer.

125. Ans. B.

The given passage is a study on the financial awareness among modern day youth. The passage points out that it has been observed that often the youth lack financial literacy. The passage points out that the financial markets have been rapidly globalised and this has led to the requirement that people need to be financially aware. So, statement A is true.

Statement B is false as the last paragraph of the passage clearly states that – ‘Most of the people availing personal loans are professionals in the age group of 25 - 45 years.’

Statement III is true as the passage points out that the study with respect to gauging financial illiteracy in youth has shown that – ‘... is prevalent even in well-developed financial markets like Germany, the Netherlands, Sweden, Japan, Italy, New Zealand, and the United States.’



**IBPS RRB PO/Clerk
2021 Course (Batch 4)**

START FREE TRIAL

So, both statements I and III are true making option B the correct answer.

126. Ans. B.

The blank needs to be filled by a phrase that contains the -ing form of the verb in it, since the blank is preceded by 'was', denoting that the sentence is in past continuous tense. This makes options B, C, and E eligible choices. But since there is no comparison, option C gets eliminated. Similarly, option E confuses the tense of the sentence. Thus, option B is the most appropriate choice for the blank.

127. Ans. A.

The phrase in the blank needs to be in the past tense to match the tone of the verb 'enthralled'. This makes option A the most appropriate choice for the blank.

Note: 'had going' is incorrect since it denotes neither past perfect tense nor past perfect continuous tense appropriately.

128. Ans. D.

The phrase in the blank needs to contain an adverb that will maintain parallelism with 'slowly' (since they are joined by the conjunction 'but'). This leaves only option D as the most appropriate choice for the blank. Thus, option D is the correct answer.

129. Ans. C.

Options A and E makes no sense contextually. Options B and D, if used in the blank, will make no grammatical sense since 'woken up' needs to be preceded by 'was' to be grammatically correct, while 'was arose' is a mismatch of tenses.

Thus, option C is the only and the most appropriate choice for the blank.

130. Ans. D.

If you make no bones about something, you talk openly about it, rather than trying to keep it a secret. Statement I is incorrect because "made no bones" refers to lack of attempt by Jon.

Statement II is incorrect because "made no bones" refers to lack of change in the judge's decision.

Statement III is correct because "made no bones" refers to Ashi keeping her wish of having a divorce from her husband.

Hence, the correct answer is D.

131. Ans. B.

If you say that one place is a **stone's throw** from another, you mean that the places are close to each other.

Statement I is incorrect because "stone's throw" is used as a measure of time.

Statement III is incorrect because "stone's throw" describes the street, not the distance between the street and the Taj.

Statement II is correct because "stone's throw" describes the distance between the bookstore and the school, thus two places.

Hence, the correct answer is B.

132. Ans. B.

The idiom "have one's (own) way" means "to do what one wants to do (despite objection from others)".

The idiom is correctly used in both sentence I and II.

But in sentence III the correct use should be "go all the way" as the sentence implies that they wanted to get to the end.

The idiom "go all the way" means 'To travel the entire distance, achieve everything possible'.

Hence, the correct answer is option B.

133. Ans. B.

The idiom "fray at the edges" means "to become weaker; to become ineffective, to become unsuccessful (gradually)".

The idiom is correctly used in both sentence I and II.

But in sentence III the correct use should be "joined the fray" as the



IBPS RRB PO/Clerk
2021 Course (Batch 4)

START FREE TRIAL

sentence implies that the person wanted to agitate against the superior.

The idiom "join the fray" means 'to participate in a fight or argument that had already started'.

Hence, the correct answer is option B.

134. Ans. D.

Here, A-F forms a meaningful and grammatically correct sentence.

Segment A points out how the subject resorted to shoddy workmanship. Shoddy means badly made or done. So, its logical that it should join with segment F.

Segments B and D cannot join as there is no preposition to link them.

Segment C cannot join with Segment E as effect is a noun used to indicate the result of a change. If the verb affect which implies to impact or change, then it would have been grammatically and conceptually correct.

Hence, option D is the correct answer.

135. Ans. A.

Here, B-E and C-D form a meaningful and grammatically correct sentence.

Segment B names a certain personality and ends with the adverb greatly. It should be followed by the segment that begins with a verb or an adjective and mentions something in relation to the personality. This makes segment E the correct segment to join to segment B.

Segment C describes how parents are best. It ends with the adjective best, which shows that the segment joining it should begin with a noun. To maintain continuity, segment D is the correct choice as it describes certain characters that can be attributed to parents.

Segment A and F are not connected conceptually.

Hence, option A is the correct answer.

136. Ans. B.

Here, A-D, B-E and C-F form a meaningful and grammatically correct sentence.

Segment A talks about how something conditions the love for the country. Hence, logically it should fit with segment D which mentions respecting the whole community.

Segment B talks about how many books exist. It should join with segment E which points out how there is a paucity of time to read all of them.

Segment C points out the benefits of a food (almond) and hence should join with segment F which mentions another such benefit.

Hence, option B is the correct answer.

137. Ans. E.

Here, A-E and C-F form a meaningful and grammatically correct sentence.

Segment A talks about how a certain well-known statue was gift. For what this gift was given is mentioned in segment E.

Segment B talks about how patriotism is considered to be an old concept. But none of the segments in column II can end this segment is a logical manner.

Segment C points out how tea has certain properties that help to prevent cell damage. It correctly joins with segment F which mentions how the properties prevent the cell damage.

Hence, option E is the correct answer.

138. Ans. D.

The correct answer is D.

Note that in the first place we need an adjective. On this basis option B stands ruled out.

The verb believe always takes a preposition 'in' when we have a noun placed after it. So, it also needs to be changed. And 'focus' given in option C also takes a preposition 'on', so it gets negated. Now a psychology cannot 'effect' gender issues.



**IBPS RRB PO/Clerk
2021 Course (Batch 4)**

START FREE TRIAL

Considering the given context, we are here talking psychology, hence in the third place 'psychological' interests makes most sense. Also, 'Egalitarian' when (used about a person, system, society, etc.) means following the principle that everyone should have equal rights. Accordingly, the verb 'neglect' fits appropriately.

139. Ans. C.

The correct answer is C.

140. Ans. B.

The correct answer is B.

141. Ans. A.

The given passage talks about the economic transformation that has happened in India post-Independence. It critically points out the issues that the Indian economic system faced the model called 'Indian socialism'. It goes on to point out the main features of the New Economic Policy which was adopted in the 1990s. It discusses both the impact of the adoption and the current scenario. So, the central theme of the passage deals with the transformation that has occurred in the Indian economy and its resulting effects. Hence, option A is the correct answer.

142. Ans. E.

The sentence with the blank talks about how the decentralisation of the state occurred with the initiation of democratic local self-government. This implies that the given blank should be filled with a phrase that means the beginning of the government. Options A and C can both be used in the blank as both *introduced* and *existence* refer to beginning of something new. But option B cannot be used as the verb form is wrong.

So, option E is the correct answer.

143. Ans. B.

The given passage talks about the economic transformation that has

happened in India post-Independence. It critically points out the issues that the Indian economic system faced the model called 'Indian socialism'. The author talks about the total authoritarian nature of the central government in India under the socialism format. So, we can infer that statement I is a correct reason as to why the Indian economy faltered under socialism.

The author also points out that – 'The private sector, which functioned pursuant to the rules of the free market, systematically shrunk and was highly dependent on the public sector.' So, statement II is also a fitting answer.

Statement III is an incorrect inference from the given facts in the passage as India had faced severe restrictions on international trade under socialism.

Since, statements I and II are correct answers, option B is the correct answer.

144. Ans. A.

It is evident that options B, C and D are all true with respect to the given passage.

In option A, the Five-Year Plans are central concept, made and maintained by the central government. They were used in the era of Indian socialism. The new economic policy is more about liberalisation and decentralisation. Thus, option A is false, making it the correct answer.

145. Ans. C.

The given passage talks about the economic transformation that has happened in India post-Independence. It critically points out the issues that the Indian economic system faced the model called 'Indian socialism'. It goes on to point out the main features of the New Economic Policy which was adopted in the 1990s. It discusses both the impact of



**IBPS RRB PO/Clerk
2021 Course (Batch 4)**

START FREE TRIAL

the adoption and the current scenario. It presents a positive feedback on the improvement of the economic system. It does this based on facts and not conjecture. Hence, 'objective' which means without prejudice; without discrimination; fair; based on fact is the best word to describe the tone of the passage.

Animated means full of life or excitement.

Benevolent means sympathetic.

Apologetic means apologizing for past or present mistakes.

Dogmatic means inclined to lay down principles as undeniably true.

146. Ans. B.

The opening statement of the passage seems to talk about an assumption or interpretation that people have. The word 'misconstrue' is opposite in meaning to interpret and is a negative term. Thus, the correct word to be used in the passage would be 'interpret'. The remaining options mean the following:-

Transcribe: put (thoughts, speech, or data) into written or printed form

Resolve: settle or find a solution to (a problem or contentious matter)

Falsify: alter (information, a document, or evidence) so as to mislead

147. Ans. D.

The correct word to be used in the passage will be 'efficacy' because it refers to 'the ability to produce a desired or intended result'. The success of a vaccine is attributed by its efficacy.

148. Ans. E.

In medical terms, the word 'administered' means dispense or apply (a remedy or drug). Since the passage talks about giving a vaccine shot to a group of people, it would be the most appropriate choice of word.

149. Ans. A.

The correct word would be 'placebo', it refers to a substance that is not medicine, but that is given to someone who is told that it is a medicine, used to test the effect of a drug or to please a patient. The remaining words are not used in medical terminology.

150. Ans. C.

The given statement talks about a possible outcome, which can be concluded based on a data. The closest term to data or analysis is statistics and thus, statistical will be the most appropriate choice. The words 'assumed,' 'potential,' or 'absolute' cannot be used for an inference.

151. Ans. D.

The error lies in the fourth part of the sentence. The first 'to' needs to be replaced by the adverb 'too' to best qualify the following adverb 'early'.

Thus, option D is the correct answer.

152. Ans. B.

The error lies in the second part of the sentence. The phrase 'sneak peek' means an opportunity to see something before it is officially available. The error lies in the use of the word 'peak', meaning the summit, to denote 'peek'.

Thus, option B is the correct answer.

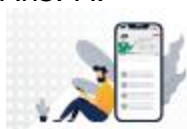
153. Ans. C.

The error lies in the third part of the sentence. The particle 'to' is always followed by the base form of the verb (in this case 'teach') to form an infinitive.

Thus, option C is the correct answer.

154. Ans. A.

The error lies in the first part of the sentence. 'Loose' means not firmly held or fastened in place, and is contextually inappropriate. It needs to be replaced by 'lose' meaning to fail to succeed in a game, competition, etc. Thus, option A is the correct answer.



IBPS RRB PO/Clerk
2021 Course (Batch 4)

START FREE TRIAL

155. Ans. E.

The sentence is contextually and grammatically correct.

Thus, option E is the correct answer.

156. Ans. B.

The correct sequence of the passage is DABEC.

Statement D introduces the topic of the passage, an important press statement. This is logically followed by A as it begins with the portion 'according to the statement'. Statement A talks about wolf being a fully protected species. Now logically this decision must have been a result of something. This makes B the third sentence of the passage. This is followed statement E which talks about how the agriculture ministry allowed people to hunt wolves. This is followed by statement C as it has the pronoun 'it'. The pronoun refers to the agriculture ministry mentioned in sentence E. Thus, the sequence of the passage is DABEC.

157. Ans. D.

The correct sequence of the passage is DABEC.

Statement D introduces the topic of the passage, an important press statement. This is logically followed by A as it begins with the portion 'according to the statement'. Statement A talks about wolf being a fully protected species. Now logically this decision must have been a result of something. This makes B the third sentence of the passage. This is followed statement E which talks about how the agriculture ministry allowed people to hunt wolves. This is followed by statement C as it has the pronoun 'it'. The pronoun refers to the agriculture ministry mentioned in sentence E. Thus, the sequence of the passage is DABEC.

158. Ans. E.

The correct sequence of the passage is DABEC.

Statement D introduces the topic of the passage, an important press statement. This is logically followed by A as it begins with the portion 'according to the statement'. Statement A talks about wolf being a fully protected species. Now logically this decision must have been a result of something. This makes B the third sentence of the passage. This is followed statement E which talks about how the agriculture ministry allowed people to hunt wolves. This is followed by statement C as it has the pronoun 'it'. The pronoun refers to the agriculture ministry mentioned in sentence E. Thus, the sequence of the passage is DABEC.

159. Ans. A.

The correct sequence of the passage is DABEC.

Statement D introduces the topic of the passage, an important press statement. This is logically followed by A as it begins with the portion 'according to the statement'. Statement A talks about wolf being a fully protected species. Now logically this decision must have been a result of something. This makes B the third sentence of the passage. This is followed statement E which talks about how the agriculture ministry allowed people to hunt wolves. This is followed by statement C as it has the pronoun 'it'. The pronoun refers to the agriculture ministry mentioned in sentence E. Thus, the sequence of the passage is DABEC.

160. Ans. C.

The correct sequence of the passage is DABEC.

Statement D introduces the topic of the passage, an important press statement. This is logically followed by A as it begins with the portion 'according to the statement'. Statement A talks about wolf being a fully protected species. Now logically



**IBPS RRB PO/Clerk
2021 Course (Batch 4)**

START FREE TRIAL

this decision must have been a result of something. This makes B the third sentence of the passage. This is followed statement E which talks about how the agriculture ministry allowed people to hunt wolves. This is followed by statement C as it has the pronoun 'it'. The pronoun refers to the agriculture ministry mentioned in sentence E. Thus, the sequence of the passage is DABEC.

161. Ans. D.

A **power-on self-test (POST)** is a process performed by firmware or software routines immediately after a computer or other digital electronic device is **powered on**.

162. Ans. A.

Cookies are small files which are stored on a **user's computer**. They are designed to hold a **modest amount of data** specific to a **particular client** and website, and can be accessed either by the **web server** or the client computer.

163. Ans. A.

The **central processing unit** consists of electronic circuits that interpret and execute program instructions, as well as communicate with the input, output, and **storage devices**.

164. Ans. C.

A **hard copy** is a printed copy of information from a computer. Sometimes referred to as a **printout**, a hard copy is so-called because it exists as a physical object.

165. Ans. C.

UPS (Uninterrupted power supply) is a back-up power supply that in case of power failure or fluctuations allows enough time for an orderly shutdown of the system or for stand by generator to start up.

166. Ans. B.

Linux is an example of **open source** software. Open source software is software that can be **freely used**,

changed and shared (in modified or unmodified form) by anyone.

167. Ans. C.

WAN spans a large geographical area. Often a country or continent. The host are connected by a communication subnet. This subnet consists of 2 distinct components : Transmission lines and switching elements. So, it WAN's the network numerous cables of telephone lines. Each one connecting a pair of routers if two routers that do not share a cable nevertheless with to communicate they must do this indirectly.

168. Ans. A.

A **computer program** that translates one program instructions at a time into machine language is called an **Interpreter**.

169. Ans. A.

Random-access memory takes the form of **integrated circuits**. RAM is normally associated with **volatile types** of memory ,where stored **information is lost** if power is removed.

170. Ans. A.

In shortcut, **Shift+ Delete** is used to Delete selected item permanently without placing the item in the Recycle Bin.

171. Ans. D.

The hexadecimal numeral system is a numeral system made up of 16 symbols (**base 16**). It uses **sixteen distinct symbols**, most often the symbols **0–9** to represent values **zero to nine**, and A, B, C, D, E, F (or alternatively a, b, c, d, e, f) to represent values ten to fifteen.

172. Ans. C.

A **network switch** is a computer networking device that connects devices together on a **computer network**, by using packet **switching to receive**, process and **forward data** to the destination device.

173. Ans. D.



**IBPS RRB PO/Clerk
2021 Course (Batch 4)**

START FREE TRIAL

An **application program** is a computer program designed to perform a group of coordinated functions, tasks, or activities for the benefit of the user.

174. Ans. A.

A **point-of-sale** (POS) terminal is a **computerized replacement** for a cash register. Much more complex than the **cash registers** of even just a few years ago, the POS system can include the ability to **record** and track **customer orders**, process credit and debit cards, connect to other systems in a network, and manage inventory.

Note:- Generally, a **POS terminal** has as its core a **personal computer**, which is provided with **application-specific programs** and I/O devices for the particular environment in which it will serve.

A POS system for a restaurant, for example, is likely to have **all menu** items stored in a **database** that can be **queried for information** in a number of ways.

175. Ans. B.

A **nibble** is a four-bit aggregation. It is also known as **half-byte**.

176. Ans. B.

- The BIOS an acronym for **Basic Input/Output System** and also known as the System BIOS, ROM BIOS or PC BIOS) is a type of firmware used during the booting process (power-on startup) on IBM PC compatible computers.
- The BIOS firmware is built into personal computers (PCs), and it is the first software they run when powered on.

So, option B is the correct answer.

177. Ans. D.

A **Data diddling** (also called false **data** entry) occurs when someone with access to information of some sort changes this information before it is entered into a computer.

178. Ans. D.

Normalization is a process of organizing the data in **database** to avoid data redundancy, insertion anomaly, update anomaly & deletion anomaly.

179. Ans. A.

Handshaking is a networking process where **two computers** establish a connection. Handshaking occurs when packets of data are exchanged between two computers.

Note: Handshaking is the action of exchanging standardized signals between devices in a computer network to regulate the transfer of data.

180. Ans. E.

A **software suite** is a collection of computer **programs** (usually application software or programming software) of related functionality, often sharing a more-or-less common user interface and some ability to **smoothly exchange data** with each other.

181. Ans. A.

The chart wizard is a wizard found in the Microsoft Excel program that takes users step-by-step through the process of creating a chart in Microsoft Excel. The Chart Wizard is accessible on the "Insert Menu" and then you choose "Chart".

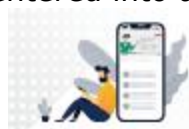
182. Ans. B.

In computing, a data warehouse (DW or DWH), also known as an enterprise data warehouse (EDW), is a system used for reporting and data analysis. DWs are central repositories of integrated data from one or more disparate sources

183. Ans. C.

In MS Excel, the **Formula Bar** is **used to do all** like entering a formula, editing a formula, entering a data in cell, etc. MS Excel is used to create calculation based worksheets.

184. Ans. C.



**IBPS RRB PO/Clerk
2021 Course** (Batch 4)

START FREE TRIAL

The computers of the third generation used **integrated circuits** (IC's) in place of **transistors**. A single **IC** has many **transistors**, **resistors**, and **capacitors** along with the associated circuitry.

Note: The period of the **third generation** was **1965-1971**.

185. Ans. E.

Data redundancy is the existence of data that is additional to the actual data and permits correction of errors in stored or transmitted data. The additional data can be simply a complete copy of the actual data, or only select pieces of data that allow detection of errors and reconstruction of lost or damaged data up to a certain level.

186. Ans. E.

Downloading is a Process of a computer receiving information, such as a Web page, from a server on the Internet.

187. Ans. D.

Integrated Services Digital Network (ISDN) is a set of communication standards for simultaneous digital transmission of voice, video, data, and other network services over the traditional circuits of the public switched telephone network.

188. Ans. A.

A **password** is the **secret code** that restricts entry to some programs. It is a without spaced sequence of **characters used** to determine that a computer user **requesting access** to a computer system is really that particular user.

189. Ans. B.

A term used to describe the act of illegally using, copying or distributing software without ownership or legal rights. The majority of software today is purchased as a one-site license, meaning that only one computer may

have that software installed on it at one time.

190. Ans. D.

In Excel, a **range** is identified by the cell in the **upper-left corner** and the cell in the lower-right corner, separated by a **colon**.

Note: The range is treated as a **single unit**, you can make the same change, or combination of changes to more than one cell at a time.

191. Ans. A.

A **database** is a collection of information that is organized so that it can easily be accessed, managed, and updated. Databases can be classified according to types of content, bibliographic, full-text, numeric and images.

Oracle Database is a multi-model database management system produced and marketed by Oracle Corporation.

192. Ans. B.

Search engines are the programs that **search documents** for specified keywords and return a list of the documents where the keywords were found. A **web search engine** is a software system that is designed to search for information on the World Wide Web.

Note:- Google and Yahoo are the major search engines used throughout the World.

193. Ans. C.

With the help of proper software, the mouse can also be used to draw pictures and make the ideal graphics.

Computer mouse works with a computer only if the proper device driver installed, but special software is needed for a more advanced mouse that has more functions.

.

194. Ans. A.

A **primary key** is a field in a table which **uniquely** identifies each



**IBPS RRB PO/Clerk
2021 Course** (Batch 4)

START FREE TRIAL

row/record in a database table. **Primary keys** must contain **unique values**.

195. Ans. D.

Frederick B. Cohen is an American **computer scientist** and best known as the **inventor of computer virus** defense techniques. He gave the definition of "**computer virus**".

196. Ans. C.

Attenuation is a general term that refers to **any reduction** in the strength **of a signal**. Attenuation occurs with any type of signal, whether digital or analog.

197. Ans. A.

A tablet (along with smartphone) is one of the most commonly used handheld devices. It uses handheld OS like Android, iOS, Symbian etc

198. Ans. D.

'**.BAK**' is a file name extension used to signify a backup copy of a file. This common '**.bak**' the naming scheme makes it possible to retrieve the original contents of the file.

199. Ans. B.

Backup refers to the process of making copies of data or data files from the original source to a different destination to use in the event the original data or data files are lost or destroyed.

200. Ans. C.

Computer forensics is the practice of collecting, analyzing and reporting on digital data in a way that is legally admissible. **Note:** It can be used in the detection and prevention of crime and in any dispute where evidence is stored digitally.



**IBPS RRB PO/Clerk
2021 Course** (Batch 4)

START FREE TRIAL