

IBPS RRB Office Assistant Mains 2020 Previous Year Solved Papers (in English)



Direction: Study the following information and answer the following questions.

Eleven boxes are placed one above the other. T is placed above W. Seven boxes are placed between Y and Q, which is placed above V. Seven boxes are placed between P and X. Only four boxes are placed above T. Two boxes are placed between R and U, which is placed above X. Seven boxes are placed between Z and S, which is placed two places below Q. Five boxes are placed between V and P, which is placed at the topmost position. More than Two boxes are placed between R and W.

1.
How many boxes are placed between R and X?
A. 5
B. 4
C. 3
D. 7
E. None of the above
2. Which box is placed at the bottom most position?
A. Y
B. Z
C. P
D. X
E. None of the above
3. Which of the following box is placed immediately below T?
A. V
B. Y
C. Q
D. U
E. W
4. Which box is three places above V?
A. S
B. R
C. Y
D. Z

E. None of the above

5. If P is related to S, T is related to W, then W is related to _

- A. U
B. V
C. Z
D. S
E. X

Direction: Study the following information and answer the given question.

6.

How many such pairs of letters are there in the word PREMATURE each of which has as many letters between them in the word (in both forward and backward directions) as in the English alphabet?

- A. 2
B. 1
C. 3
D. 0
E. More than 3

Direction: Study the following information and answer to the following questions.

In an artificial language, "White Laptop Blue Pad" is coded as "qr ef ab kl"

"Green Sky Colour Blue" is coded as "op uv ef st"

"Blue Pad Laptop Green" is coded as "ef ab op kl"

7.

How is "Blue" coded in that language?

- A. gr
B. ab
C. ef
D. kl
E. uv

8. How is "Sky" coded in that language?

- A. uv



**IBPS RRB PO/Clerk
2021 Course** (Batch 4)

START FREE TRIAL

- B. op
- C. st
- D. either uv or st
- E. ef

9. The code "ab kl" means _____.

- A. Laptop Pad
- B. Green Pad
- C. Blue Laptop
- D. Cannot be determined
- E. None of the above

Direction: Study the following information and answer the following questions.

Eight people i.e. A, B, C, D, E, F, G and H were born on two different dates i.e. 7th and 28th of February, April, July and November of the same year but not necessarily in the same order.

Two people were born between C and G who was born in the month having least number of days. At least one person was born between F and D. F was born just after C. D was born after F. B was born in the same month of C but not on the same date as of G. The number of people born before G is same as the number of people born after A. E was born after G on an even numbered date. H was not born just before C.

10. How many people were born after C?

- A. Three
- B. One
- C. Two
- D. None
- E. Four

11. How many people were born between C and H?

- A. One
- B. Two
- C. Four

- D. Three
- E. None

12. Who was born on 28th July?

- A. G
- B. E
- C. B
- D. C
- E. None of these

13. H was born on which date?

- A. 7th November
- B. 28th April
- C. 28th February
- D. 7th July
- E. None of these

14. How many people were born after D?

- A. Four
- B. Three
- C. One
- D. Two
- E. None

Direction: Study the following information and answer the given questions.

Point A is 15m to the South of point B, which is 15m to the West of point C. Point F is 25m to the West of point E, which is 25m to the South of point C. Point G, which is towards the West of point B, is towards the North of point F.

15. What is the direction between G and F?

- A. 30m
- B. 25m
- C. 20m
- D. Cannot be determined
- E. None of the above

16. In which direction is C with respect to G?

- A. East



**IBPS RRB PO/Clerk
2021 Course (Batch 4)**

START FREE TRIAL

- B. West
- C. North
- D. South
- E. None of the above

17. In which direction is point E with respect to point B?

- A. South-East
- B. South-West
- C. North-West
- D. South
- E. None of the above

Direction: Study the following information and answer the following questions.

Nine people are sitting around a circular table, four of them are facing the center while others are facing outside the center. P sits second to the right of Z, who faces inside. Three people sit between Y and R, who sits immediate left of Z. One person sits between Q and M, Q faces outside the center. O and M are immediate neighbors. G sits third to the left of K, who sits immediate right of M. Y and K are not immediate neighbors. More than one person sits between G and Q, G is facing the center. Three people sit between O and G. Both G and Y are adjacent to P. O and R are facing the same direction but opposite to Y.

18. How many people are seated between Y and R, when counted clockwise from Y?

- A. 3
- B. 4
- C. 5
- D. 6
- E. 7

19. Who among the following faces outside the centre?

- A. O

- B. P
- C. Q
- D. None of the above
- E. All of the above

20. Who sits 5th to the right of O?

- A. Y
- B. P
- C. Z
- D. G
- E. None of the above

21. _____ sits 7th to the left of R.

- A. M
- B. G
- C. Z
- D. K
- E. None of the above

22. Four of the following five are alike in a certain way and thus forms a group. Find the one that does not belong to that group.

- A. YP
- B. ZR
- C. KM
- D. QO
- E. PG

23. If it is possible to make a meaningful word using the second, fifth, seventh and eighth letters of the word 'BUTTERFLY', then which letter is third from the left of the word thus formed? If no such word be formed, mark the answer as 'Y'. If more than one word can be formed, mark the answer as 'X'.

- A. L
- B. U
- C. X
- D. M
- E. E

Direction: In each of the questions given below, some conclusions are



**IBPS RRB PO/Clerk
2021 Course (Batch 4)**

START FREE TRIAL

given. Select the option according to which all the given conclusions follow.
24.

Conclusions:

- I. $P \geq H$
- II. $P < D$
- III. $D > R$
- A. $P \geq V, N < D, V = W, D > B, N > P, B \geq R, W \geq H$
- B. $P \geq V, N < D, V = W, D < B, N > P, B \geq R, W \geq H$
- C. $P \geq V, N < D, V = W, D > B, N > P, B \geq R, W < H$
- D. $P \geq V, N > D, V = W, D > B, N > P, B \geq R, W \geq H$
- E. None of these

25. Conclusions:

- I. $J > E$
- II. $D > K$
- III. $E > I$
- A. $D > E, F = G, H < I, E < G, J \geq F, D > I, K = H$
- B. $D < E, F = G, H > I, E < G, J \geq F, D > I, K = H$
- C. $D < E, F = G, H < I, E < G, J \leq F, D > I, K = H$
- D. $D < E, F = G, H < I, E < G, J \geq F, D > I, K = H$
- E. None of these

26. Conclusions:

- I. $X > W$
- II. $U > Y$
- III. $V \leq Q$
- A. $V < X, Q \geq Y, X = T, U > Q, V \leq J, T > W, Y < J$
- B. $V < X, Q \geq Y, X = T, U > Q, V \leq J, T > W, Y = J$
- C. $V < X, Q \leq Y, X = T, U > Q, V \leq J, T > W, Y = J$
- D. $V < X, Q \geq Y, X = T, U < Q, V \leq J, T > W, Y = J$
- E. None of these

27. Conclusions:

- I. $S < J$
- II. $M > N$

III. $X < J$

- A. $P \geq S, X > N, N < D, J = M, S < X, J > D$
- B. $P \geq S, X < N, N < D, J > M, S < X, J > D$
- C. $P \geq S, X < N, N < D, J = M, S < X, J > D$
- D. $P \geq S, X < N, N < D, J = M, S > X, J > D$
- E. None of these

Direction: Study the following information and answer the following questions.

Six people live in a building having six floors. One person lives on one floor. The ground floor is numbered as 1, and the floor above it numbered as 2, till to the top floor which is numbered as 6. Each one of them likes different colours.

The one, who likes Pink, lives on the even-numbered floor. Three people live between R and the one, who likes Pink. Two people live between the one, who likes Red and R, who does not like Blue. One person lives between the one, who likes Red and Y, who does not live near to R. Two people live between Y and H, who does not like Blue and Brown. E lives immediately below P, who does not like Green. Three people live between K and the one, who likes Black.

28.

Who amongst the following like Brown?

- A. P
- B. K
- C. R
- D. E
- E. None of these

29. H likes which amongst the following colour?

- A. Blue
- B. Green



**IBPS RRB PO/Clerk
2021 Course (Batch 4)**

START FREE TRIAL

- C. Red
- D. Pink
- E. None of these

30. How many people live between H and the one who like Brown?

- A. Three
- B. One
- C. None
- D. Two
- E. Four

31. The one who likes Black lives on which amongst the following floor?

- A. 3rd
- B. 4th
- C. 1st
- D. 2nd
- E. 5th

32. How many people live below the one who likes Green?

- A. One
- B. Three
- C. Four
- D. None
- E. Two

Direction: Study the following information and answer the given questions.

In a three-generation family, nine members i.e. A, B, C, D, E, F, G, H, and I. I is a son of E. G is the father of C who is the brother-in-law of I. A belongs to the first generation. F has only two children – they are of different gender. F is the mother-in-law of I. B and H are the grandsons of S. D is the daughter in law of E who is the mother of only one child. People belongs to first generation are married.

33.

Who among the following is the mother of B?

- A. F

- B. E
- C. D
- D. A
- E. None of the above

34. How many members are unmarried in the family?

- A. Four
- B. Three
- C. Two
- D. None
- E. More than Four

35. How is G related to D?

- A. Father
- B. Grandfather
- C. Uncle
- D. Brother
- E. Cannot be determined

Direction: Study the following information and answer the following questions.

Eight people i.e., M, N, O, P, Q, R, S and T enrolled in 3 different courses i.e. BSc, B Com and BA. Not more than three people enrolled in a same course. Minimum two people enrolled in each course. They like different colors i.e., Blue, Black, White, Yellow, Grey, Green, Pink and Silver but not necessary in same order.

O likes Green but does not enrolled in BA and B Com. P enrolled in BSc but does not like Silver, Black and White colors. T likes blue but does not enrolled in BSc and BA. The course in which T enrolled contains two more people in it. M enrolled in BA and does not like Black, Silver and Blue. N likes Black and does not enrolled with P and T in same course. Q likes Grey and enrolled with P. The one who likes White and Silver enrolled in B Com. One of the people who enrolled in BA likes Yellow. R likes White but does not enrolled with N and P.



**IBPS RRB PO/Clerk
2021 Course (Batch 4)**

START FREE TRIAL

36. Who likes White colour?
A. R
B. T
C. O
D. P
E. None of these
37. Who amongst the following enrolled in BA?
A. S and M
B. M, N and Q
C. M and N
D. P, T and R
E. None of these
38. M likes which amongst the following colour?
A. Grey
B. Green
C. Black
D. Yellow
E. None of these
39. Which amongst the following pair is correct?
A. M-Yellow-B Com
B. P-Pink-B Com
C. O-Green-BA
D. Q-Grey-BSc
E. All are true
40. Who amongst the following likes Pink colour?
A. R
B. S
C. P
D. M
E. None of these
41. The age of A, 6 years ago was equal to the age of B, 18 years ago and age of A, 18 years ago was equal to the present age of C. If D is 8 years older than C, then B is how much older or younger than D?
A. 30 years
B. 24 years

- C. 22 years
D. 28 years
E. None of these

42. Neha spends 25% of her monthly income on EMI, 40% of the remaining on bills and she gave the remaining amount to her mother and father in the ratio of 3 : 2 respectively. If the difference between the amount of EMI and the amount that she gave to her mother is Rs. 840, what is the monthly income of Neha?
A. Rs. 42000
B. Rs. 40000
C. Rs. 48000
D. Rs. 50000
E. None of these

43. In a business, the amount invested by B is double of that by A and the amount invested by C is equal to the total amount invested by A and B together. B invested the amount for twice the period than that of A and C invested the amount 6 months less than that of B. If the ratio of the profits of B to C is 8 : 3, A invested the amount for how much time?
A. 3 months
B. 6 months
C. 5 months
D. 4 months
E. None of these

$$\frac{Q^2}{R}$$

44. Given Equation: $P = \frac{Q^2}{R}$
If value of Q is increased by 20% and value of R is increased by 60% then what will be the change in value of P?
A. value of P increased by 10%
B. Cannot find value of P
C. value of P remain constant
D. value of P decreased by 10%
E. None of these

45. The cost price of an article is Rs. 900 and the marked price of the



**IBPS RRB PO/Clerk
2021 Course (Batch 4)**

START FREE TRIAL

article is Rs. 1100. If the profit percentage and the discount percentage is equal, then find the profit earned on the article.

- A. Rs. 120
- B. Rs. 90
- C. Rs. 100
- D. Rs. 80
- E. None of these

46. The difference between a unit digit and ten's place of a two-digit number is 5. If the number is increased to 4 times and 3 is subtracted from the given number, the number will reverse. What is the original two-digit number?

- A. 38
- B. 16
- C. 49
- D. 18
- E. None of these

47. A work is assigned to a contractor to construct a 12 km long road. The contractor hires 100 workers to complete the work in 15 days. After 9 days, he realizes that only 5 km road is constructed. How many additional workers are needed to finish the work on time?

- A. 90
- B. 120
- C. 110
- D. 140
- E. None of these

48. A man invested Rs. X in scheme A on simple interest at the rate of 10% p.a. and Rs. (X + 500) in scheme B on compound interest at the rate of 10% p.a. The amount received after 2 years from scheme B is Rs. 620 more than that from scheme A. Find the sum invested in scheme B.

- A. Rs. 2000
- B. Rs. 1800
- C. Rs. 1500

- D. Rs. 1200
- E. None of these

49. A, B and C are three containers having equal quantity of water. From container A half of the quantity, from

$\frac{1}{3}$ container B $\frac{1}{3}$ rd of the quantity and no mixture is taken from container C and all the taken mixture mixed and distributed equally in all the containers. The quantity of the mixed water in container C is what part of the quantity of water in container C initially?

- A. $\frac{5}{18}$
- B. $\frac{5}{6}$
- C. $\frac{2}{9}$
- D. $\frac{5}{12}$
- E. None of these

50. The length of a rectangle is 3m more than that of breadth. If the length is increased by 3m and breadth is decreased by 2m, the area remains unchanged. What is area of rectangle?

- A. 200 m²
- B. 150 m²
- C. 180 m²
- D. 210 m²
- E. None of these

###COMMON###51###55###**Direction:** Read the given information carefully and answer the questions that follow.

In the table given below, shows the number of employees in 5 different companies (A, B, C, D and E) and the ratio of males to females in them.



**IBPS RRB PO/Clerk
2021 Course (Batch 4)**

START FREE TRIAL

Company	Total number of employees	Male : Female
A	80	5 : 3
B	110	15 : 7
C	120	7 : 5
D	105	6 : 1
E	135	11 : 4

Note: Total number of employees in a company = Total number of male employees + Total number of female employees

51.

Total number of employees in companies A and C together is approximately how much percent more than the number of male employees in companies B and C together?

- A. 38%
- B. 26%
- C. 14%
- D. 34%
- E. 41%

52. What is the difference between the total number of male employees from companies A and D together to that of the number of female employees from company E?

- A. 102
- B. 104
- C. 110
- D. 112
- E. None of these

53. The total number of female employees from companies A, B, and C together is approximately what percent of the total number of female employees from companies D and company E together?

- A. 200%
- B. 225%
- C. 260%
- D. 280%
- E. 325%

54. In another company F, the number of female employees is $33\frac{1}{3}\%$ more

than male employees in company B and the number of male employees is $\frac{2}{5}$

163% less than female employees in company A. What is the ratio of the number of employees in company F and number of female employees in company C?

- A. 4 : 3
- B. 2 : 1
- C. 3 : 2
- D. 5 : 2
- E. 7 : 4

55. Average salary of male employees in company C is Rs. 1200000 per annum. If the average salary of all the employees in company C is Rs. 1000000 per annum, what is the average salary (per annum) of female employees in company C?

- A. Rs. 600000
- B. Rs. 720000
- C. Rs. 840000
- D. Rs. 960000
- E. None of these

Direction: Find the wrong number in the given series.

56.

1000, 992, 965, 901, 776, 556, 217

- A. 776
- B. 217
- C. 556
- D. 1000
- E. 901

57. 56, 70, 50, 64, 44, 60, 38

- A. 44
- B. 60
- C. 38
- D. 64
- E. 50

58. 5, 16, 29, 46, 63, 88, 117

- A. 63
- B. 117
- C. 88



**IBPS RRB PO/Clerk
2021 Course** (Batch 4)

START FREE TRIAL

- D. 46
E. 29

59. 10, 6, 3.5, 5, 16, 120, 1904

- A. 120
B. 5
C. 16
D. 6
E. 10

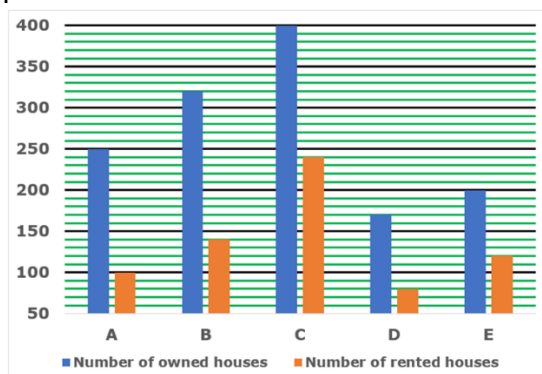
60. 6, 17, 49, 149, 446, 1337, 4010

- A. 1337
B. 149
C. 446
D. 4010
E. 49

Direction: Read the given information carefully and answer the questions that follow.

A survey took place in 5 different cities to find out the data of people owning houses in the 5 cities.

The bar-graph given below shows the number of houses (in thousands) owned by people and number of owners that had rented their house in 5 different cities (A, B, C, D, E) according to the survey that took place.



It was also found out that the owners of a house in a city were either living in them or rented their house. Also, owner and tenant are not living together in any house.

61.

What is the difference between the number of people that were staying in their owned house in city A and the number of people that had rented their house in city D?

- A. 130000
B. 110000
C. 90000
D. 80000
E. 70000

62. What is the ratio of the number of people that owned a house in city E and the number of people that rented their house in city B?

- A. 9 : 5
B. 5 : 8
C. 10 : 7
D. 5 : 11
E. None of these

63. Number of people staying in their own houses in city C is what percentage more than the number of people that rented their houses in city E?

- A. 25%
B. 30%
C. 35%
D. 40%
E. None of these

64. In another city F, the number of rented houses and owned houses are 40% less than and 30% more than the number of people that are staying in their houses in city B. What is the number of people that are staying in their houses in city F?

- A. 90
B. 108
C. 126
D. 144
E. 162

65. If among the people living on rent in city E, 20% pay less than Rs. 10000 rent and 45% pay more than Rs.



**IBPS RRB PO/Clerk
2021 Course (Batch 4)**

START FREE TRIAL

10000 rent, what is the total cumulative rent generated from people who pay Rs. 10000 rent?

- A. Rs. 42000000
- B. Rs. 4200000
- C. Rs. 35000000
- D. Rs. 3500000
- E. None of these

Direction: What approximate value will come in place of the question mark (?) in the following question? (You are not expected to calculate the exact value)

66.

$$24.998 \times 6.02 \times ? = 3599$$

- A. 30
- B. 24
- C. 20
- D. 38
- E. 40

67. $\sqrt{?} \times 9.01 + 5.99\% \text{ of } 249 = 78$

- A. 64
- B. 100
- C. 49
- D. 36
- E. 25

68. $194.031 + 1549.02 + 49.06 = ?$

- A. 1872
- B. 1682
- C. 1532
- D. 1792
- E. 1732

$$\frac{75\% \text{ of } 541 - 45.09}{8.01} = ?$$

69.

- A. 60
- B. 55
- C. 45
- D. 70
- E. 40

$$\frac{71.99 + 108.05}{14.01 - 7.99} = ?$$

- 70.
- A. 40

- B. 20
- C. 24
- D. 30
- E. 36

Direction: Read the information given below and answer the questions that follow.

Two shops A and B sell pizzas and burgers only on Sunday and Monday. The number of pizzas sold by shop B on Sunday was 64 which is equal to the number of burgers sold by shop A on Sunday. The number of burgers sold by shop A on Monday is 20% more than the number of pizzas sold by shop A on Monday. The number of pizzas sold by shop A on Sunday is 40 more than the number of pizzas sold by shop B on Sunday. The average number of pizzas sold by shop A on Sunday, Monday and burgers sold by shop B on Monday is 120. The total number of pizzas sold were 400 which were 50 less than the total number of burgers sold. Number of burger and pizzas sold by shop B were 352.

71.

What is the sum of the number of pizzas sold on Monday by shop A and number of burgers sold by shop B on Monday?

- A. 286
- B. 284
- C. 256
- D. 214
- E. 186

72. Number of pizzas sold by shop B on Monday is what percentage of number of burgers sold by shop A on Monday?

- A. 83.3%
- B. 57.8%
- C. 54.7%
- D. 45.6%
- E. 35.6%



**IBPS RRB PO/Clerk
2021 Course (Batch 4)**

START FREE TRIAL

73. What is the average of number of burgers sold by shop B on Sunday and the number of pizzas sold by shop A on Sunday?

- A. 94
- B. 102
- C. 105
- D. 142
- E. 165

74. Another shop C sold $33\frac{1}{3}\%$ more pizzas on Monday than shop A on Monday. The same shop C sold 25% more burgers on Monday than shop B on Sunday. What was the number of pizzas and burgers sold by shop C on Monday?

- A. 325
- B. 290
- C. 350
- D. 260
- E. None of these

75. If shop A sold every burger for Rs. 25 and every pizza for Rs. 50, what was the revenue generated by shop A on Sunday and Monday?

- A. Rs. 18000
- B. Rs. 18800
- C. Rs. 19800
- D. Rs. 21600
- E. Rs. 23400

76. If on Tuesday, number of burgers sold by shop A were 20% more than the number of pizzas sold by shop A on Monday and number of pizzas sold by shop A were 25% more than the number of pizzas sold on Sunday, then what is the difference between the number of burgers and pizzas sold by shop A on Tuesday?

- A. 70
- B. 60
- C. 50
- D. 40

E. 30

77. The speed of two trains A and B are 54 km/h and 36 km/h respectively. Train A can cross a pole in 16 seconds and train B can cross a pole in 30 seconds. Find the time taken by train A and train B to cross each other when they are running in opposite direction.

- A. 18.4 seconds
- B. 20.5 seconds
- C. 24 seconds
- D. 21.6 seconds
- E. None of these

78. The speed of the current is 3.5 km/h. If a boat goes downstream 168 km in 16 hours, then how much distance it will go in upstream direction in 18 hours?

- A. 72 km
- B. 60 km
- C. 63 km
- D. 60 km
- E. None of these

79. Anushka alone can complete 80% of the work in 32 days while the efficiency of Anushka is 80% more than that of Bhanu. If Anushka, Bhanu and Chitra together can complete the whole work in 18 days, find the time taken by Chitra to complete 75% of work.

- A. 45 days
- B. 60 days
- C. 50 days
- D. 40 days
- E. 42 days

80. There are x green balls, $(x + 4)$ yellow balls and $2x$ black balls in a box. If the probability of choosing a

black ball from the bag is $\frac{4}{9}$ then what is the total number of balls in the bag?

A. 40



**IBPS RRB PO/Clerk
2021 Course (Batch 4)**

START FREE TRIAL

- B. 32
- C. 24
- D. 36
- E. 35

81. What is the highest denomination note ever printed by the RBI?

- A. Rs. 1,00,000
- B. Rs. 10,000
- C. Rs. 5,000
- D. Rs. 1,000
- E. Rs 2,000

82. Which of the following ministries has constituted the National Council for Transgender Persons, a requirement under the Transgender Persons (Protection of Rights) Act, 2019?

- A. Ministry of Personnel, Public Grievances and Pensions
- B. Ministry of Prime Minister's Office
- C. Ministry of Skill Development and Entrepreneurship
- D. Ministry of Social Justice and Empowerment
- E. Ministry of Women and Child Development

83. What is the revised overdraft limit under Pradhan Mantri Jan Dhan Yojana?

- A. Rs 5,000
- B. Rs 20,000
- C. Rs 10,000
- D. Rs 2,000
- E. Rs 1,000

84. If two parallel lines are drawn on the front part of a cheque, it is called _____.

- A. Crossed Cheque
- B. Open Cheque
- C. Slate Cheque
- D. Traveller Cheque
- E. Self cheque

85.

The Public Provident Fund is savings-cum-tax-saving instrument in India, introduced by the National Savings Institute of the Ministry of Finance in 1968. What is the minimum amount to be invested in PPF account?

- A. Rs. 100
- B. Rs. 500
- C. Rs. 1000
- D. Rs. 200
- E. None of these

86. Which of the following young mathematicians has been awarded the Ramanujan Award, 2020?

- A. Franklin James
- B. Carolina Araujo
- C. Neelmani Pandey
- D. Ramesh Kumar
- E. None of the above

87. In which state Hornbill Festival is celebrated?

- A. Sikkim
- B. Mizoram
- C. Assam
- D. Nagaland
- E. Karnataka

88. In which year the National Dairy Development Board (NDDB) was established through an act of parliament with the headquarters at Anand (Gujarat) ?

- A. 1961
- B. 1965
- C. 1967
- D. 1968
- E. 1970

89. Bharat Sanchar Nigam Limited (BSNL) has launched a Unified Payments Interface (UPI) based payment platform, Bharat InstaPay in partnership with which bank?

- A. State Bank of India
- B. Canara Bank
- C. Union Bank of India
- D. Bank of Baroda



**IBPS RRB PO/Clerk
2021 Course (Batch 4)**

START FREE TRIAL

E. Punjab National Bank

90. Which of the following states hosted India's first Seaplane Project?

- A. Maharashtra
- B. Gujarat
- C. Odisha
- D. Goa
- E. None of the above/More than one of the above

91. According to Census 2011, India has a rural population of-

- A. 21.96 %
- B. 31.16 %
- C. 35.22 %
- D. 68.84 %
- E. 28.64%

92. The Full form of FCCB is

- A. Foreign currency convertible bonds
- B. Foreign countries convertible bonds
- C. Foreign companies convertible bonds
- D. Foreign Convertible Currency Bonds
- E. None of the above

93. What is the maximum deposit allowed in India Post Payment Bank (IPPB)?

- A. Rs. 10,000
- B. Rs. 50,000
- C. Rs. 1 lakh
- D. Rs. 5 lakh
- E. No limit

94. Under Pradhan Mantri Fasal Bima Yojana (PMFBY) what percentage of the premium has to be paid by a farmer, for Kharif crops?

- A. 5%
- B. 3%
- C. 1.5%
- D. 2%
- E. 0.5%

95. International Tiger Day is celebrated on-

- A. 16 September
- B. 19 July
- C. 29 July
- D. 12 August
- E. None of the above/More than one of the above

96. Who is the author of the book 'Overdraft: Saving the Indian Saver'?

- A. S Jaishankar
- B. Viral Acharya
- C. BP Kanungo
- D. Urjit Patel
- E. None of the Above

97. Which company does not come under Hinduja group?

- A. Ashok Leyland
- B. IndusInd Bank
- C. NxtDigital Ltd
- D. Cyqrex Systems Private Limited
- E. HSBC

98. Singapore Central Bank is known as _____

- A. Developmental Bank of Singapore
- B. United Bank of Singapore
- C. OCBC Bank
- D. Monetary Authority of Singapore
- E. None of the above

99. When will India host G20 summit?

- A. 2021
- B. 2022
- C. 2023
- D. 2024
- E. 2025

100. Which of the following is not a G7 nation?

- A. Canada
- B. Australia
- C. Japan
- D. UK
- E. US

101. What is the full form of OTT?



**IBPS RRB PO/Clerk
2021 Course (Batch 4)**

START FREE TRIAL

- A. Over-The-Top
- B. On-The-Top
- C. Over-The-Transformation
- D. On-The-Transition
- E. None of the above

102. What is the deposit limit of Payment Banks?

- A. Rs 5 Lakhs
- B. Rs 3 Lakhs
- C. Rs 1 Lakh
- D. Rs 10,000
- E. Rs 50,000

103. ASHA is a trained female community health activist. What is the full form of ASHA?

- A. Association of Social and Health Agencies
- B. Accredited Social Health Activist
- C. Affiliated Social Help Agency
- D. Accord of Social and Health association
- E. None of the above

104. K S Chitra has been conferred with Padma Bhushan award for 2021. She was awarded for distinguished service in which of the following fields?

- A. Literature and Education
- B. Dance
- C. Social Worker
- D. Art and Music
- E. Trade and Industry

105. Who is the Prime Minister of Iceland?

- A. Bjarni Benediktsson
- B. Benedikt Jóhannesson
- C. Katrin Jakobsdottir
- D. Micheál Martin
- E. Jacinda Kate Laurell Ardern

106. Hiroshima Day is celebrated on

- A. 6 August
- B. 6 July

- C. 6 September
- D. 6 December
- E. 12 January

107. Asia's First Solar Power-Enabled Textile Mill to come up in which state of India?

- A. Gujarat
- B. Karnataka
- C. Andhra Pradesh
- D. Maharashtra
- E. Kerala

108. What is the full form of MSP?

- A. Minimum support prices
- B. Maximum support prices
- C. Market support prices
- D. Minimum supporting prices
- E. None of the above

109. Which state's 'Human by Nature Print Campaign' bagged the Prestigious Pacific Asia Travel Association (PATA) Grand Title Winner 2020 for Marketing?

- A. Karnataka
- B. Kerala
- C. Rajasthan
- D. Maharashtra
- E. Odisha

110. Pradhan Mantri Krishi Sinchayee Yojana was launched in which year?

- A. 2013
- B. 2014
- C. 2015
- D. 2016
- E. 2017

111. The temple of Angkor Wat is situated in which of the following countries?

- A. Indonesia
- B. Cambodia
- C. Vietnam
- D. Malaysia

112. The person to whom cheque is paid is called _____.



**IBPS RRB PO/Clerk
2021 Course (Batch 4)**

START FREE TRIAL

- A. Drawer
- B. Drawee
- C. Payee
- D. Debtor

113. Padma Bhushan awardee Soumitra Chatterjee passed away recently, he was associated with which field?

- A. Actor
- B. Journalist
- C. Politician
- D. Football Player
- E. Vocalist

114. Which technology is used in paywave or "Tap and Go" service?

- A. Radio Frequency Identification (RFID) technology
- B. Near field Communication (NFC)
- C. Straight Through Processing technology
- D. Host Card Emulation (HCE) technology
- E. None of the above

115. NAFIS survey conducted by which Organization?

- A. SIDBI
- B. SEBI
- C. RBI
- D. NABARD
- E. NITI Aayog

116. Which is the only Indian city placed on the World's 100 Best Cities Ranking by Resonance Consultancy Ltd?

- A. Indore
- B. Delhi
- C. Bengaluru
- D. Hyderabad
- E. Chennai

117. The Rural Self Employment Training institute provide training the youth range between what age group?

- A. 18-30 years
- B. 18-35 years
- C. 18-45 years
- D. 20-35 years
- E. 25-45 years

118. Substandard assets are those which should not be extended by _____.

- A. 3 months
- B. 4 months
- C. 6 months
- D. 12 months
- E. 18 months

119. Who are not included in Poshan Abhiyan?

- A. Children
- B. Pregnant women
- C. Lactating mothers
- D. Adolescent Girls
- E. All of the above

120. National Productivity Council comes under administrative control of which ministry?

- A. Ministry of Commerce and Industry
- B. Ministry of Finance
- C. Ministry of Labour and Employment
- D. Ministry of Rural Development
- E. Ministry of Social Justice and Empowerment

Direction: Rearrange the following six sentences (A), (B), (C), (D), (E) and (F) in the proper sequence to form a meaningful paragraph. Then answer the questions given below them.

A) And increasingly, we have placed a new demand on these forests – to save us from human-caused climate change.

B) This everyday miracle has spurred hopes that plants can act as a natural brake on climate change, capturing much of the carbon dioxide emitted by fossil fuel burning.



**IBPS RRB PO/Clerk
2021 Course (Batch 4)**

START FREE TRIAL

C) Plants absorb carbon dioxide from the atmosphere, transforming it into leaves, wood, and roots.

D) Our society asks so much of fragile ecosystems, which control freshwater availability and are home to two-thirds of the planet's terrestrial biodiversity.

E) Across the world, governments, companies, and conservation charities have pledged to conserve or plant massive numbers of trees.

121. Which of the following will be the LAST statement after rearrangement?

- A. A
- B. B
- C. C
- D. D
- E. E

122. Which of the following will be the SECOND statement after rearrangement?

- A. A
- B. B
- C. C
- D. D
- E. E

123. Which of the following will be the FOURTH statement after rearrangement?

- A. A
- B. B
- C. C
- D. D
- E. E

124. Which of the following will be the THIRD statement after rearrangement?

- A. A
- B. B
- C. C
- D. D
- E. E

125. Which of the following will be the FIRST statement after rearrangement?

- A. A
- B. B
- C. C
- D. D
- E. E

Direction: Read the sentence to find out whether there is an error in it. The error, if any, will be in one part of the sentence. The number corresponding to that part will be your answer. If the given sentence is correct as it is, mark the answer as 'No error'. Ignore the errors of punctuation, if any.

126.

Their was a rumour (1)/ afloat that the houses (2)/ on the block would be demolished (3)/ to build a mall. (4)

- A. 1
- B. 2
- C. 3
- D. 4
- E. No error

127. The fundraiser ball (1)/ was thrown to raise funds (2)/ for new equipments (3)/ for the Physics laboratory. (4)

- A. 1
- B. 2
- C. 3
- D. 4
- E. No error

128. The streets (1)/ were waterlogged (2)/ because it was rain (3)/ since morning. (4)

- A. 1
- B. 2
- C. 3
- D. 4
- E. No error

Direction: Read the sentence to find out whether there is an error in it. The



**IBPS RRB PO/Clerk
2021 Course (Batch 4)**

START FREE TRIAL

error, if any, will be in one part of the sentence. The number corresponding to that part will be your answer. If the given sentence is correct as it is, mark the answer as 'No error'. Ignore the errors of punctuation, if any.

129. It would seem that (1)/ the presentation had (2)/ its desired affect (3)/ on the audience. (4)

- A. 1
- B. 2
- C. 3
- D. 4
- E. No error

130. In those days, (1)/ even going to school (2)/ was considered to be (3)/ a great achievement for a woman (4)

- A. 1
- B. 2
- C. 3
- D. 4
- E. No error

Direction: Four statements, rearranged in different ways in the alternatives, are given. Choose the option in which the statements have been arranged in the most appropriate way to form a grammatically correct and contextually meaningful sentence.

131. I was running late for work. I behaved badly with him. Later I felt bad. I decided I should apologize to him.

- A. I was running late for work and behaved badly with him but later I felt bad and decided I should apologize to him.
- B. I felt bad for behaving badly with him but I was running late for work so I decided I should apologize to him.
- C. I felt bad and I decided to apologize to him for I had behaved badly although I was running late for work.

D. I behaved badly with him as I was running late for work and this made me feel bad and I decided I should apologize to him.

E. None of these

132. She had a very successful corporate career. She had a happy marriage. She had two beautiful, healthy children. She decided to end her life by consuming poison.

A. She decided to end her life by consuming poison but she had a very successful corporate career, a happy marriage and two beautiful, healthy children.

B. She had a very successful corporate career and a happy marriage as well as two beautiful, healthy children but despite all this, she decided to end her life by consuming poison.

C. Despite having a very successful corporate career, a happy marriage and two beautiful, healthy children, she decided to end her life by consuming poison.

D. A very successful corporate career, a happy marriage and two beautiful, healthy children were not enough to stop her from ending her life by consuming poison.

E. None of these

133. We drive cars. Cars create exhaust. This exhaust is dangerous for the ozone level in the atmosphere. Ozone is critical for human existence.

A. We drive cars that create exhaust which is dangerous for the ozone level in the atmosphere even though ozone is critical for human existence.

B. Exhaust from cars that we drive is dangerous for the ozone level in the atmosphere which is critical for human existence.

C. We drive cars that create exhaust that is dangerous for the ozone level



**IBPS RRB PO/Clerk
2021 Course (Batch 4)**

START FREE TRIAL

in the atmosphere that is critical for human existence.

D. Although ozone is critical for human existence, the exhaust from cars we drive is dangerous for ozone level in the atmosphere.

E. None of these

134. As the storm contracts, it grows taller. It also changes color. It becomes more intense orange. Scientists are not sure why this is happening.

A. As the storm contracts, it also grows taller and changes color, becoming a more intense orange although scientists are not sure yet why this is happening.

B. Scientists are not sure why the storm grows taller and changes color to become a more intense orange when the storm is contracting.

C. As the storm contracts, it grows taller, changes color and becomes more intense orange and scientists are not sure why this is happening.

D. The storm grows taller and changes color, becoming more intense orange but scientists are not sure why this happens when it is contracting.

E. None of these

Direction: Four statements, rearranged in different ways in the alternatives, are given. Choose the option in which the statements have been arranged in the most appropriate way to form a grammatically correct and contextually meaningful sentence.

135. Martha Stewart is a popular TV celebrity. Her television show is filmed at her home. This irritates her neighbours. Some of them have made their displeasure known about this.

A. The filming of Martha Stewart's television show at her home irritates

her neighbours some of whom have made their displeasure known about this to Martha Stewart who is a popular TV celebrity.

B. Although Martha Stewart is a popular TV celebrity, the filming of her television show at her home irritates her neighbours and some of whom have made their displeasure known about this.

C. Martha Stewart, despite being a popular TV celebrity, irritates her neighbours by filming her television show at her home and some of her neighbours have made their displeasure known about this.

D. Martha Stewart is a popular TV celebrity whose television show is filmed at her home and this irritates her neighbours and some of whom have made their displeasure known about this.

E. None of these

Direction: Read the given passage carefully and answer the questions that follow. Certain words are printed in bold to help you locate them while answering some of these.

The most sought-after qualities in new job candidates have long included points such as education, motivation, experience, dependability, and confidence. More recently, emotional intelligence has entered the **roster** as one of the most desirable traits in individuals in today's workforce. Emotional intelligence, or EQ, is defined as the "ability to identify and manage one's own emotions, as well as the emotions of others."

There are four distinct categories of emotional intelligence which each offer unique benefits within a working environment.

Self-Awareness allows us to understand ourselves. An employee



**IBPS RRB PO/Clerk
2021 Course (Batch 4)**

START FREE TRIAL

with self-awareness has an articulate understanding of their own strengths, weaknesses, drivers, values, and their impact on others in the workplace. They appreciate receiving constructive criticism, and are highly motivated to improve their own performance, and to be a positive influence on the rest of the workforce. Self-Management enables us to feel negative emotions and prevent them from having a disruptive impact. An employee with good self-management skills will never let frustration or anger get in the way of them doing their best work. Additionally, they will feel comfortable bringing problems within the workplace to management's attention, and speak up for themselves and others in an appropriate and professional tone.

Social Awareness is what makes us great team players. An employee with acute social awareness ____**(A)**____ uncomfortable, disengaged, or aren't saying something they want to say. They put the wellbeing of the group before their own success, and will make space for group thought by facilitating a truly collaborative environment. They are service oriented, a great listener, and particularly good in public-facing roles.

Relationship Management is at its most basic applied empathy. An employee with relationship management skills is automatically an expert in conflict resolution. They can remain calm in the face of another's distress, and will be able to diffuse the situation through humour or empathetic listening. They are highly influential in the workplace, and usually make great candidates for management positions.

Although the downside of higher EQ remains largely unexplored, there are many reasons for being cautious about a one-size-fits-all or higher-is-always-better take on EQ.

There is a negative correlation between EQ and many of the traits that **predispose** individuals toward creativity and innovation. Creativity has long been associated with attributes that are characteristic of *low* EQ: artistic moodiness, nonconformism, hostile impulsivity, and an excitable personality. While it is of course possible for creative people to be emotionally intelligent, the more common pattern for people with higher EQ is to be great at following processes, building relations, and working with others.

At first glance, high EQ scorers may seem to do well when it comes to giving and receiving feedback, for both involve social interaction. Scratch under the surface, however, and you will see that their high interpersonal sensitivity and empathic concern may make it hard for her to deliver critical or negative feedback to others. In addition, high EQ scores can be hard to shake up, since they are generally so calm, adjusted, and positive.

High EQ may help to empathize and deliver a message that feels right to the audience — this is often a good thing. Taken too far, however, it can slide from influencing others to engaging in tactics of manipulation. The risk of overusing one's social skills is in focusing heavily on the emotional aspects of communication while neglecting logical arguments and the more transactional aspects of communication.

Sources:

<https://hbr.org/2017/01/the->



**IBPS RRB PO/Clerk
2021 Course** (Batch 4)

START FREE TRIAL

downsides-of-being-very-emotionally-intelligent
<https://www.checkster.com/blog/emotional-intelligence-in-the-workplace>

136.

Which of the following given traits is most essential in a good leader?

- A. Self-awareness
- B. Self-Management
- C. Social Awareness
- D. Relationship Management
- E. All of the given options

Direction: Read the given passage carefully and answer the questions that follow. Certain words are printed in bold to help you locate them while answering some of the these.

The most sought-after qualities in new job candidates have long included points such as education, motivation, experience, dependability, and confidence. More recently, emotional intelligence has entered the **roster** as one of the most desirable traits in individuals in today's workforce. Emotional intelligence, or EQ, is defined as the "ability to identify and manage one's own emotions, as well as the emotions of others."

There are four distinct categories of emotional intelligence which each offer unique benefits within a working environment.

Self-Awareness allows us to understand ourselves. An employee with self-awareness has an articulate understanding of their own strengths, weaknesses, drivers, values, and their impact on others in the workplace. They appreciate receiving constructive criticism, and are highly motivated to improve their own performance, and to be a positive influence on the rest of the workforce.

Self-Management enables us to feel negative emotions and prevent them from having a disruptive impact. An employee with good self-management skills will never let frustration or anger get in the way of them doing their best work. Additionally, they will feel comfortable bringing problems within the workplace to management's attention, and speak up for themselves and others in an appropriate and professional tone.

Social Awareness is what makes us great team players. An employee with acute social awareness **(A)** uncomfortable, disengaged, or aren't saying something they want to say. They put the wellbeing of the group before their own success, and will make space for group thought by facilitating a truly collaborative environment. They are service oriented, a great listener, and particularly good in public-facing roles.

Relationship Management is at its most basic applied empathy. An employee with relationship management skills is automatically an expert in conflict resolution. They can remain calm in the face of another's distress, and will be able to diffuse the situation through humour or empathetic listening. They are highly influential in the workplace, and usually make great candidates for management positions.

Although the downside of higher EQ remains largely unexplored, there are many reasons for being cautious about a one-size-fits-all or higher-is-always-better take on EQ.

There is a negative correlation between EQ and many of the traits that **predispose** individuals toward creativity and innovation. Creativity has long been associated with



**IBPS RRB PO/Clerk
2021 Course** (Batch 4)

START FREE TRIAL

attributes that are characteristic of low EQ: artistic moodiness, nonconformism, hostile impulsivity, and an excitable personality. While it is of course possible for creative people to be emotionally intelligent, the more common pattern for people with higher EQ is to be great at following processes, building relations, and working with others.

At first glance, high EQ scorers may seem to do well when it comes to giving and receiving feedback, for both involve social interaction. Scratch under the surface, however, and you will see that their high interpersonal sensitivity and empathic concern may make it hard for her to deliver critical or negative feedback to others. In addition, high EQ scores can be hard to shake up, since they are generally so calm, adjusted, and positive.

High EQ may help to empathize and deliver a message that feels right to the audience — this is often a good thing. Taken too far, however, it can slide from influencing others to engaging in tactics of manipulation. The risk of overusing one's social skills is in focusing heavily on the emotional aspects of communication while neglecting logical arguments and the more transactional aspects of communication.

Sources:

<https://hbr.org/2017/01/the-downsides-of-being-very-emotionally-intelligent>

<https://www.checkster.com/blog/emotional-intelligence-in-the-workplace>

137. Which of the following can be a downside of being socially aware?

- A. Unable to work all by themselves.
- B. Being easily manipulated.
- C. Being invasive with their team members.

- D. Forcing others to speak.
- E. None of these.

138. Which of the following statement (s) is/are NOT TRUE in accordance with the information provided in the passage?

- I. People with high EQ cannot be creative.
 - II. Self-management helps us hide our insecurities.
 - III. Artists generally do not conform to the rules of society.
- A. Only I
 - B. Only III
 - C. Both II & III
 - D. Both I & II
 - E. All are correct

139. Which of the following statements is true about "transactional aspects of communication" with reference to the given passage?

- A. It refers to the logical arguments put forth in a conversation.
- B. It is used to communicate with seniors.
- C. It is a sign of professionalism in an individual.
- D. It is used to disengage a conflict.
- E. It is the result of impulse speaking.

140. Why does the author warn about a one-size-fits-all take on EQ?

- I. Seemingly positive traits can have negative effects under different circumstances.
 - II. Grouping together all employees reduces individuality.
 - III. Further studies on EQ might reveal more flaws.
- A. Only I
 - B. Both I & II
 - C. All I, II & III
 - D. Both II & III
 - E. Only III



**IBPS RRB PO/Clerk
2021 Course (Batch 4)**

START FREE TRIAL

141. Which of the following words from the passage is most OPPOSITE in meaning to the given word?

PREDISPOSE

- A. Cling
- B. Linger
- C. Dissuade
- D. Mingle
- E. Fuse

142. According to the passage, which of the following is/are a positive effect of constructive criticism?

- A. Create an envious environment.
- B. Both C & D
- C. Instil confidence among peers.
- D. Improvement of self-performance.
- E. Desired trait in employees fit for leadership roles.

143. Which of the following is/are correctly inferred from the given passage?

- I. High EQ was not a desirable trait in the past.
 - II. Clients prefer socially aware employees.
 - III. Stubbornness is an attitude common in high EQ scorers.
- A. Only I
 - B. Only III
 - C. Both II & III
 - D. Both I & II
 - E. All are correct

Direction: Read the given passage carefully and answer the questions that follow. Certain words are printed in bold to help you locate them while answering some of the these.

The most sought-after qualities in new job candidates have long included points such as education, motivation, experience, dependability, and confidence. More recently, emotional intelligence has entered the **roster** as one of the most desirable traits in individuals in

today's workforce. Emotional intelligence, or EQ, is defined as the "ability to identify and manage one's own emotions, as well as the emotions of others."

There are four distinct categories of emotional intelligence which each offer unique benefits within a working environment.

Self-Awareness allows us to understand ourselves. An employee with self-awareness has an articulate understanding of their own strengths, weaknesses, drivers, values, and their impact on others in the workplace. They appreciate receiving constructive criticism, and are highly motivated to improve their own performance, and to be a positive influence on the rest of the workforce.

Self-Management enables us to feel negative emotions and prevent them from having a disruptive impact. An employee with good self-management skills will never let frustration or anger get in the way of them doing their best work. Additionally, they will feel comfortable bringing problems within the workplace to management's attention, and speak up for themselves and others in an appropriate and professional tone.

Social Awareness is what makes us great team players. An employee with acute social awareness (A) uncomfortable, disengaged, or aren't saying something they want to say. They put the wellbeing of the group before their own success, and will make space for group thought by facilitating a truly collaborative environment. They are service oriented, a great listener, and particularly good in public-facing roles.

Relationship Management is at its most basic applied empathy. An



**IBPS RRB PO/Clerk
2021 Course** (Batch 4)

START FREE TRIAL

employee with relationship management skills is automatically an expert in conflict resolution. They can remain calm in the face of another's distress, and will be able to diffuse the situation through humour or empathetic listening. They are highly influential in the workplace, and usually make great candidates for management positions.

Although the downside of higher EQ remains largely unexplored, there are many reasons for being cautious about a one-size-fits-all or higher-is-always-better take on EQ.

There is a negative correlation between EQ and many of the traits that **predispose** individuals toward creativity and innovation. Creativity has long been associated with attributes that are characteristic of *low* EQ: artistic moodiness, nonconformism, hostile impulsivity, and an excitable personality. While it is of course possible for creative people to be emotionally intelligent, the more common pattern for people with higher EQ is to be great at following processes, building relations, and working with others.

At first glance, high EQ scorers may seem to do well when it comes to giving and receiving feedback, for both involve social interaction. Scratch under the surface, however, and you will see that their high interpersonal sensitivity and empathic concern may make it hard for her to deliver critical or negative feedback to others. In addition, high EQ scores can be hard to shake up, since they are generally so calm, adjusted, and positive.

High EQ may help to empathize and deliver a message that feels right to the audience — this is often a good thing. Taken too far, however, it can slide from influencing others to

engaging in tactics of manipulation. The risk of overusing one's social skills is in focusing heavily on the emotional aspects of communication while neglecting logical arguments and the more transactional aspects of communication.

Sources:

<https://hbr.org/2017/01/the-downsides-of-being-very-emotionally-intelligent>

<https://www.checkster.com/blog/emotional-intelligence-in-the-workplace>

144. Which of the given options can be used to complete the blank labelled (A) in the most appropriate way, contextually and grammatically?

- A. can tell when others are
- B. could tell when others were
- C. can be told when others were
- D. could told when others are
- E. could be told when others were

145. Which of the following is the MOST SIMILAR in meaning to the given word as used in the passage?

ROSTER

- A. Rota
- B. Book
- C. Agenda
- D. List
- E. Tally

Direction: In the given statement some words have been highlighted. These words may not be at the correct place making the sentence grammatically and contextually incorrect. Choose the option which represents the correct sequence of words, which will make the sentence grammatically and contextually correct. If the sentence is correct as it is, choose E i.e. 'No rearrangement required' as your answer.

146.



**IBPS RRB PO/Clerk
2021 Course (Batch 4)**

START FREE TRIAL

After an hour-long sleep, Rehan **feet** (A) up to find his dog **woke** (B) nestled at his **comfortably**. (C)

- A. CAB
- B. BCA
- C. ABC
- D. ACB
- E. No rearrangement required

147. The newly appointed football coach **pep** (A) his team on with his **goaded** (2) talks until their final **victory**. (C)

- A. ABC
- B. CAB
- C. ACB
- D. BAC
- E. No rearrangement required

148. The **play** (A), which was written by William Shakespear in the 16th centure, became **famous** (B) for its clever use of **satire**. (C)

- A. ACB
- B. BAC
- C. CAB
- D. CBA
- E. No rearrangement required

149. At the beach, the children of Mr. and Mrs. Iyer, were **built** (A) of the **proud** (B) sandcastle they had **elaborate**. (C)

- A. BCA
- B. ABC
- C. ACB
- D. CBA
- E. No rearrangement required

150. Shubham, along with his friends Shreya and Ayush, **flew** (A) stared at the kite as it **hopelessly** (B) away into the **horizon**. (C)

- A. ABC
- B. BAC
- C. CAB
- D. CBA
- E. No rearrangement required

Direction: In the following question, a word is given along with its usage in sentences given in the options. Choose the option in which the use of the given word is contextually and grammatically correct. If the word's usage in any of the sentences is not correct, choose 'None of the above' as your option.

151.

Review

- A. The new restaurant received bad feedback from its review.
- B. The university is conducting a review of the curriculum for the upcoming year.
- C. Suranjana finally watched the movie that released last review.
- D. The company decided to make fundamental changes after few employees review.
- E. None of the above

152. Support

- A. The Prime Minister during the political crisis, needed her support and not her criticism.
- B. The employment minister promised his voters that the support would generate new jobs.
- C. Robin did go and did something support but we both know her boss deserved it.
- D. Tom's lack of compassion towards the new-born cats support Mary.
- E. None of the above

153. Free

- A. After getting laid off at the job, Roshan cannot afford to free a new car right now.
- B. Kunal was a strict judge, and he didn't allow any word to escape his free.
- C. It is not hard to free the fact the government has failed its people when they needed it the most.



**IBPS RRB PO/Clerk
2021 Course** (Batch 4)

START FREE TRIAL

D. Ramesh can spend the money he won at the lottery with a free conscience.
E. None of the above

154. Aspire

A. Ruby's mother has a driver's license, yet she doesn't aspire.
B. The goal of any motivational speaker is to make their audiences to aspire to be something better.
C. Subodh was the best cook in the city, and women had an irresistible aspire towards him.
D. The wrestler said he was about to aspire his opponent down.
E. None of the above

155. Miniscule

A. A few minutes, and then the baby would be miniscule asleep.
B. Ashwin made a deal with a miniscule stranger in order to sell his old laptop.
C. The budget allotted towards education and health is miniscule compared to the military budget of country.
D. My brother emailed about his miniscule arrival at Darjeeling with his wife.
E. None of the above

Direction: In the given question, five words are printed in bold and are numbered A, B, C, D and E. The positions of some highlighted words may be incorrect and need to be exchanged with another highlighted to make the sentence correct. Find the words that need to be exchanged.
156.

It is increasingly **apparent** (A) that various state and local **authorities** (B) will soon have no **other** (C) choice except to shut down activities to **cope** (D) with this frightening **surge** of cases (E).

A. A-C
B. C-D & B-C
C. C-E
D. A-B & C-E
E. No exchange required

157. With Iran **sanctions** (A) that the USA should remove **insisting** (B) first and Washington asking Iran to take the first step by **restarting** (C) its compliance with the **remains** (D), the divide between the two sides **pact** (E) huge.

A. B - D
B. C - D
C. A - B & D - E
D. No exchange required
E. A - E & B - C

158. The **vacuum** (A) that is being created with the **departure** (B) of the US's military machine must be filled with **stability** (C) that are not **inimical** (D) to the peace, prosperity and **forces** (E) of Afghanistan and its neighbours.

A. No exchange required
B. C - E
C. A - C
D. C - D & B - C
E. A - B & D - E

159. Jonathan is **mindful** (A) that Shashi Tharoor has **accused** (B) the British of **loot** (C) the railways to **facilitate** (D) getting **building** (E) out of India.

A. No exchange required
B. C - E
C. A - C
D. C - D & B - C
E. A - B & D - E

160. India's **federal** (A) power structure was greatly **strengthened** (B) in the 1990s as a **result** (C) of a **realities** (D) accommodation of new political **grudging** (E).



**IBPS RRB PO/Clerk
2021 Course** (Batch 4)

START FREE TRIAL

A. A – D & B – E

B. A – D

C. B – C

D. No exchange required

E. D – E

161. _____ are often delivered to a PC through an email attachment and are often designed to do harm.

A. Viruses

B. Spam

C. Portals

D. SMS messages

E. None of these

162. SMPS stands for _____.

A. Switched Mode Power Supply

B. Start Mode Power Supply

C. Store Mode Power Supply

D. Single Mode Power Supply

E. None of these

163. _____ are specially designed computer chips that reside inside other devices, such as your car or your electronic thermostat.

A. Servers

B. Embedded computers

C. Robotic computers

D. Mainframes

E. None of these

164. The hardware device or software program that sends messages between networks is known as a _____.

A. Bridge

B. Backbone

C. Router

D. Gateway

E. None of these

165. Managers use sophisticated tool to combat cyberslacking, especially involving the internet. Such tools include _____.

A. Web filters

B. Surveillance Software

C. Proxy Server

D. Packet sniffer

E. All of the above

166. Which of the following is not a method of accessing the web?

A. modem

B. ISDN

C. DSL

D. CPU

E. None of these

167. Who is the creator of PASCAL language?

A. Dijkstra

B. Niklaus Wirth

C. D. Khuth

D. Aho

E. Dennis Ritchie

168. A repair for a known software bug, usually available at no charge on the internet, is called a(n) _____.

A. version

B. patch

C. tutorial

D. FAQ

E. None of these

169. What is the base of hexadecimal number system?

A. 2

B. 8

C. 16

D. 10

E. None of these

170. _____ this is the act of copying or downloading a program from a network and making multiple copies of it.

A. Network piracy

B. Plagiarism

C. Software piracy

D. Site-license piracy

E. None of these

171. _____ is a power saving state designed primarily for laptops. It



**IBPS RRB PO/Clerk
2021 Course (Batch 4)**

START FREE TRIAL

saves your open documents and programs to your hard disk and turns off our computer.

- A. Sleep
- B. Hibernate
- C. Suitcase
- D. Snooze
- E. None of these

172. Pressing CTRL + 9 in Excel _____.

- A. Prints 9
- B. Prints
- C. Prints 9 followed by spaces
- D. Inserts 9 cells at the current location
- E. Hides the current row

173. Which type of memory holds only that program and data that CPU is presently processing?

- A. CMOS
- B. ROM
- C. RAM
- D. ASCII
- E. CD

174. Softcopy is the intangible output, so then what is hardcopy?

- A. The physical parts of the computer
- B. The printed parts of the computer
- C. The printed output
- D. The physical output devices
- E. None of the above

175. The altering of data so that it is not usable unless the changes are undone is _____.

- A. Ergonomics
- B. Biometrics
- C. Compression
- D. Encryption
- E. None of these

176. One nibble is equal to _____ bits.

- A. 4
- B. 8

- C. 12
- D. 16
- E. None of these

177. Which type of software is used in the design of products, structures, civil engineering drawings and maps?

- A. CAD programs
- B. desktop programs
- C. drawing programs
- D. painting programs
- E. video/audio programs

178. Firewalls are used to protect against _____.

- A. Unauthorised attacks
- B. Virus attacks
- C. Data-driven attacks
- D. Fire attacks
- E. None of these

179. The main function of the ALU is to _____.

- A. perform arithmetic and logical operations
- B. store data and information for future use
- C. control computer output, such as printing
- D. monitor all computer activities
- E. None of the above

180. Which of the following are types of sound files?

- A. LOG files
- B. DAT files
- C. WAV files
- D. DRV files
- E. None of these

181. What kind of Protocol is used to provide Internet access from mobile?

- A. TCP/IP
- B. ISD
- C. WAP
- D. HTTP
- E. None of these



**IBPS RRB PO/Clerk
2021 Course** (Batch 4)

START FREE TRIAL

182. World Computer Literacy Day is observed on _____.

- A. December 2
- B. November 4
- C. September 2
- D. November 2
- E. None of these

183. Malicious software is known as _____.

- A. Badware
- B. Malware
- C. Malicious ware
- D. Iiigalware
- E. None of these

184. The database administrator's function in an organization is _____.

- A. to be responsible for the more technical aspects of managing the information contained in organizational databases
- B. to be responsible for the executive level aspect of decisions regarding the information management
- C. to show the relationship among entity classes in a data warehouse
- D. to define which data mining tools must be used to extract data
- E. None of the above

185. The amount of time required by a storage device to retrieve data and programs is its _____.

- A. retrieval speed
- B. capacity
- C. memory
- D. storage
- E. access speed

186. Second generation computers are made of _____.

- A. Vacuum Tubes
- B. Transistors
- C. LSI
- D. VLSI
- E. None of these

187. Red triangle at the top right corner of a cell indicates _____.

- A. There is an error in the cell
- B. There is a comment associated with the cell
- C. The font color of the text in cell is red
- D. The cell can't accept formula
- E. None of these.

188. Primary key is a _____.

- A. Common key
- B. Unique key
- C. Input key
- D. Output key
- E. None of these

189. _____ is not a graphic file format that allows animation to be viewed on a computer.

- A. GIF
- B. PNG
- C. MP8
- D. WMF
- E. EMF

190. What does the .org domain represents?

- A. Education domain
- B. organization domain
- C. Network domain
- D. Government domain
- E. None of these

191. One-way authentication is based on _____.

- A. Possession of a secret (Password)
- B. Possession of an artifact
- C. Unique physiological or behavioral characteristics of the user
- D. All of the above
- E. None of these

192. _____ is not a web browser.

- A. Java
- B. Mozilla
- C. Netscape navigator
- D. Internet explorer



**IBPS RRB PO/Clerk
2021 Course (Batch 4)**

START FREE TRIAL

E. None of these

193.

Kernel is a central component of _____.

- A. A part of CPU
- B. An operating system
- C. A hardware
- D. A register
- E. None of these

194. Google+ is another alternative to which of the following site ?

- A. Bing
- B. Amazon
- C. Yahoo
- D. Facebook
- E. None of these

195. Which of the following is not true about RAM?

- A. RAM is the same as hard disk storage
- B. RAM is a temporary storage area
- C. RAM is volatile
- D. RAM stands for Random Access Memory
- E. Information stored in RAM is gone when you turn the computer off

196. If you wished to limit what you would see on an Excel worksheet, what data function would you use?

- A. Sort
- B. Filter
- C. Conditional format
- D. Data analysis
- E. None of these

197. IDE stands for _____.

- A. Integrate Disk Error
- B. Input Data Error
- C. Integrated Development Environment
- D. Integrated Disk Environment
- E. None of these

198. Integrated Circuit (IC) chips used in computers are made with _____.

- A. Copper
- B. Aluminium
- C. Gold
- D. Silicon
- E. Silver

199. Expansion cards are inserted into _____.

- A. slots
- B. peripheral devices
- C. CPU
- D. The back of the computer
- E. pegs

200. Office LANs that are spread geographically apart on a large scale can be connected using a corporate _____.

- A. CAN
- B. LAN
- C. DAN
- D. WAN
- E. TAN



**IBPS RRB PO/Clerk
2021 Course** (Batch 4)

START FREE TRIAL

###ANSWERS###

1. Ans. A.

P
Q
R
S
T
U
V
W
X
Y
Z

2. Ans. B.

P
Q
R
S
T
U
V
W
X
Y
Z

3. Ans. D.

P
Q
R
S
T
U
V
W
X
Y
Z

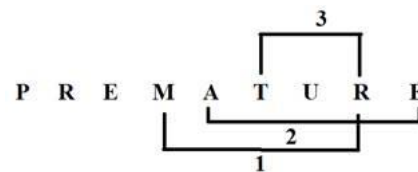
4. Ans. A.

P
Q
R
S
T
U
V
W
X
Y
Z

5. Ans. C.

P
Q
R
S
T
U
V
W
X
Y
Z

6. Ans. C.



7. Ans. C.

Code	Meaning
Ef	Blue
Kl	Pad
Ab	Laptop
Op	Green
Gr	White
St	Colour/Sky
Uv	Sky/Colour

8. Ans. D.



**IBPS RRB PO/Clerk
2021 Course** (Batch 4)

START FREE TRIAL

Code	Meaning
Ef	Blue
Kl	Pad
Ab	Laptop
Op	Green
Gr	White
St	Colour/Sky
Uv	Sky/Colour

9. Ans. A.

Code	Meaning
Ef	Blue
Kl	Pad
Ab	Laptop
Op	Green
Gr	White
St	Colour/Sky
uv	Sky/Colour

10. Ans. A.

Date and Month	People
7 th February	H
28 th February	G
7 th April	B
28 th April	E
7 th July	C
28 th July	F
7 th November	A
28 th November	D

11. Ans. D.

Date and Month	People
7 th February	H
28 th February	G
7 th April	B
28 th April	E
7 th July	C
28 th July	F
7 th November	A
28 th November	D

12. Ans. B.

Date and Month	People
7 th February	H
28 th February	G
7 th April	B
28 th April	E
7 th July	C
28 th July	F
7 th November	A
28 th November	D

13. Ans. E.

Date and Month	People
7 th February	H
28 th February	G
7 th April	B
28 th April	E
7 th July	C
28 th July	F
7 th November	A
28 th November	D

14. Ans. E.

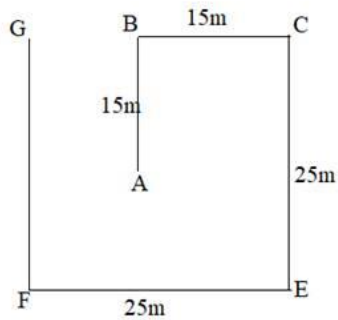
Date and Month	People
7 th February	H
28 th February	G
7 th April	B
28 th April	E
7 th July	C
28 th July	F
7 th November	A
28 th November	D

15. Ans. B.

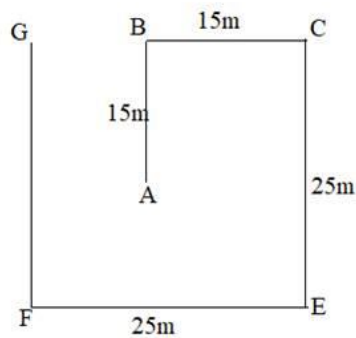


**IBPS RRB PO/Clerk
2021 Course (Batch 4)**

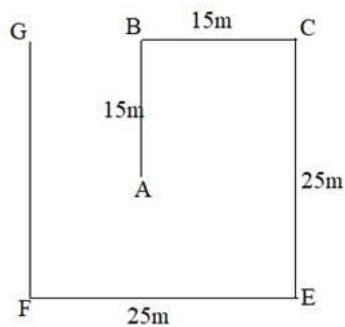
START FREE TRIAL



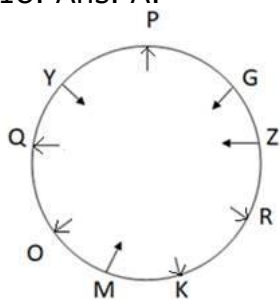
16. Ans. A.



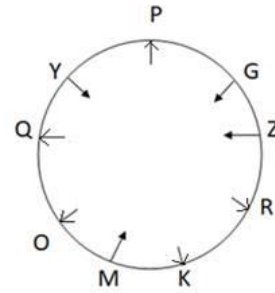
17. Ans. A.



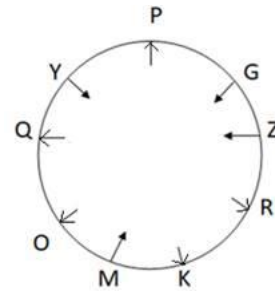
18. Ans. A.



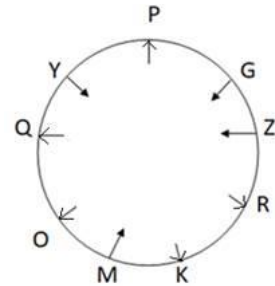
19. Ans. E.



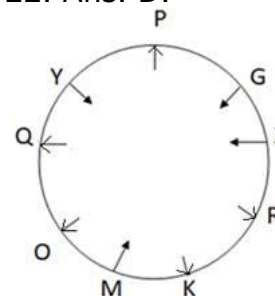
20. Ans. C.



21. Ans. B.



22. Ans. D.



23. Ans. C.

The second, fifth, seventh and eighth letters of the word 'BUTTERFLY' are U, E, F and L

The meaningful words that can be formed using these letters are FLUE and FUEL.

Hence, the answer is X as more than one words are formed.

24. Ans. A.

$P \geq V = W \geq H$



**IBPS RRB PO/Clerk
2021 Course (Batch 4)**

START FREE TRIAL

$$P < N < D$$

$$D > B \geq R$$

Therefore, option A is the correct answer.

25. Ans. D.

$$J \geq F = G > E$$

$$K = H < I < D$$

$$I < D < E$$

Therefore, option D is the correct answer.

26. Ans. B.

$$X = T > W$$

$$U > Q \geq Y$$

$$V \leq J = Y \leq Q$$

Therefore, option B is the correct answer.

27. Ans. C.

$$S < X < N < D < J$$

$$N < D < J = M$$

Therefore, option C is the correct answer.

28. Ans. C.

Floor	People	Colour
6	R	Brown
5	K	Blue
4	H	Green
3	P	Red
2	E	Pink
1	Y	Black

29. Ans. B.

Floor	People	Colour
6	R	Brown
5	K	Blue
4	H	Green
3	P	Red
2	E	Pink
1	Y	Black

30. Ans. B.

Floor	People	Colour
6	R	Brown
5	K	Blue
4	H	Green
3	P	Red
2	E	Pink
1	Y	Black

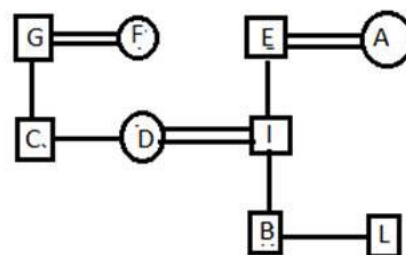
31. Ans. C.

Floor	People	Colour
6	R	Brown
5	K	Blue
4	H	Green
3	P	Red
2	E	Pink
1	Y	Black

32. Ans. B.

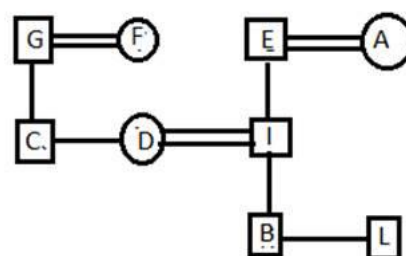
Floor	People	Colour
6	R	Brown
5	K	Blue
4	H	Green
3	P	Red
2	E	Pink
1	Y	Black

33. Ans. C.



D is the mother of B.

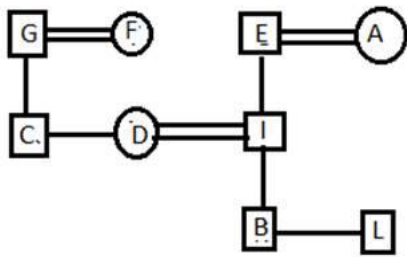
34. Ans. B.



**IBPS RRB PO/Clerk
2021 Course** (Batch 4)

START FREE TRIAL

35. Ans. A.



36. Ans. A.

People	Colour	Course
O	Green	BSc
P	Pink	BSc
T	Blue	B Com
R	White	B Com
S	Silver	B Com
M	Yellow	BA
N	Black	BA
Q	Grey	BSc

37. Ans. C.

People	Colour	Course
O	Green	BSc
P	Pink	BSc
T	Blue	B Com
R	White	B Com
S	Silver	B Com
M	Yellow	BA
N	Black	BA
Q	Grey	BSc

38. Ans. D.

People	Colour	Course
O	Green	BSc
P	Pink	BSc
T	Blue	B Com
R	White	B Com
S	Silver	B Com
M	Yellow	BA
N	Black	BA
Q	Grey	BSc

39. Ans. D.

People	Colour	Course
O	Green	BSc
P	Pink	BSc
T	Blue	B Com
R	White	B Com
S	Silver	B Com
M	Yellow	BA
N	Black	BA
Q	Grey	BSc

40. Ans. C.

People	Colour	Course
O	Green	BSc
P	Pink	BSc
T	Blue	B Com
R	White	B Com
S	Silver	B Com
M	Yellow	BA
N	Black	BA
Q	Grey	BSc

41. Ans. C.

Let the present age of C be x years

Present age of D = (x + 8) years

Age of A, 18 years ago = x years

Present age of A = x + 18 years

Age of A, 6 years ago = (x + 18 - 6)
= (x + 12) years

Age of B, 18 years ago = x + 12 years

Present age of B = x + 12 + 18 = x + 30 years

So, B is (x + 30 - x - 8) = 22 years older than D.

Hence, option C is correct.

42. Ans. A.

Let the monthly income of Neha be Rs. 100x

Amount that she spent on EMI = 100x
× 25% = Rs. 25x

Remaining amount = Rs. 75x

Amount that she spent on bills = 75x
× 40% = Rs. 30x

Remaining amount = Rs. 45x



**IBPS RRB PO/Clerk
2021 Course (Batch 4)**

START FREE TRIAL

Amount that she gave to her mother

$$= \frac{45x}{5} \times 3 = \text{Rs. } 27x$$

According to the data provided in the question, we get

$$\Rightarrow 27x - 25x = 840$$

$$\Rightarrow x = 420$$

Monthly income of Neha = $100x = \text{Rs. } 42000$

Hence, option A is correct.

43. Ans. D.

Let the amount invested by A be Rs. x.

Amount invested by B = Rs. $2x$

Amount invested by C = Rs. $3x$

Let the time period of investment A be y months

The time period of investment B = $2y$ months

The time period of investment C = $(2y - 6)$ months

Ratio of profit share of B to C = $(2y \times 2x) : 3x \times (2y - 6)$

$$\Rightarrow 8 : 3 = 4y : (6y - 18)$$

$$\Rightarrow 8 \times (6y - 18) = 4y \times 3$$

$$\Rightarrow 12y - 36 = 3y$$

$$\Rightarrow 9y = 36$$

$$\Rightarrow y = 4$$

A invested the amount for 4 months.

Hence, option D is correct.

44. Ans. D.

New value of Q = $1.2Q$

New value of R = $1.6R$

$$\text{New value of P} = \frac{1.2Q \times 1.2Q}{1.6R} = \frac{1.44Q^2}{1.6R}$$

$$= \frac{\frac{Q^2}{R} - \frac{1.44Q^2}{1.6R}}{\frac{Q^2}{R}}$$

Percentage change in P =

$$\frac{\frac{0.16Q^2}{1.6R}}{\frac{Q^2}{R}} \times 100$$

$$\times 100 = \frac{R}{R} = 10\%$$

P is decreased by 10%.

Hence, option D is correct.

45. Ans. B.

Let the discount percentage and profit percentage is x%.

According to the data provided in the question, we get:

$$900 \times (100 + x)\% = 1100 \times (100 - x)\%$$

$$\Rightarrow 900 + 9x = 1100 - 11x$$

$$\Rightarrow 20x = 200$$

$$\Rightarrow x = 10$$

Profit and discount percentage = 10% each

Profit earned on the article = $900 \times 10\% = \text{Rs. } 90$

Hence, option B is correct.

46. Ans. B.

Let the ten's digit and unit's digit of the original number be x and y respectively.

ATQ

$$(10x + y) \times 4 - 3 = 10y + x$$

$$\Rightarrow 40x + 4y - 3 = 10y + x$$

$$\Rightarrow 39x - 6y = 3 \dots (1)$$

$$y - x = 5 \dots (2)$$

Using equations (1) and (2)

$$x = 1, y = 6$$

So, original number = $10x + y = 10 \times 1 + 6 = 16$

Hence, option B is correct.

47. Ans. C.

Let additional workers needed to finish the work be x.

According to the data provided in the question, we get

$$\frac{100 \times 9}{5} = \frac{(100 + x) \times 6}{7}$$

$$\Rightarrow 2100 = 1000 + 10x$$

$$\Rightarrow 1100 = 10x$$

$$\Rightarrow x = 110$$

So, 110 additional workers are needed to finish the work on time.

Hence, option C is correct.

48. Ans. A.

Amount received from scheme A after

$$2 \text{ years} = X + \frac{X \times 10 \times 2}{100} = \text{Rs. } 1.2X$$



**IBPS RRB PO/Clerk
2021 Course (Batch 4)**

START FREE TRIAL

Amount received from scheme B after

$$2 \text{ years} = (X + 500) \times \left(1 + \frac{10}{100}\right)^2 = 1.21X + 605$$

According to the data provided in the question, we get

$$\Rightarrow 605 + 1.21X - 1.20X = 620$$

$$\Rightarrow 0.01X = 15$$

$$\Rightarrow X = 1500$$

$$\text{Sum invested in scheme B} = 1500 + 500 = \text{Rs. } 2000$$

Hence, option A is correct.

49. Ans. A.

Let the quantity of mixture in each container A, B and C be x litres

Quantity of water taken from

$$\text{container A and B} = \frac{x}{2} + \frac{x}{3} = \frac{5x}{6}$$

Taken water is distributed equally in each container. So, the quantity is

$$\text{mixed in container C} = \frac{\frac{5x}{6}}{3} = \frac{5x}{18}$$

$$\text{Required value} = \frac{\frac{5x}{18}}{\frac{5}{18}} = x = 18$$

Hence, option A is correct.

50. Ans. C.

Let the breadth of the rectangle be x m

$$\text{Length of the rectangle} = (x + 3) \text{ m}$$

According to the data provided in the question, we get

$$\Rightarrow x \times (x + 3) = (x + 6) \times (x - 2)$$

$$\Rightarrow x^2 + 3x = x^2 - 2x + 6x - 12$$

$$\Rightarrow x = 12$$

$$\text{Length of the rectangle} = 15 \text{ m}$$

$$\text{Breadth of the rectangle} = 12 \text{ m}$$

$$\text{Area of the rectangle} = 15 \times 12 = 180 \text{ m}$$

Hence, option C is correct.

51. Ans. A.

In company A:

$$\text{Number of male employees} = 80 \times \frac{5}{8} = 50$$

$$\text{Number of female employees} = 80 - 50 = 30$$

Similarly,

Company	Total number of employees	Male employees	Female employees
A	80	50	30
B	110	75	35
C	120	70	50
D	105	90	15
E	135	99	36

$$\text{Required percentage} = \frac{80 + 120 - 75 - 70}{75 + 70} \times 100 = 37.93\% \approx 38\%$$

$$\times 100 = 37.93\% \approx 38\%$$

Hence, the answer is option A.

52. Ans. B.

In company A:

$$\text{Number of male employees} = 80 \times \frac{5}{8} = 50$$

$$\text{Number of female employees} = 80 - 50 = 30$$

Similarly,

Company	Total number of employees	Male employees	Female employees
A	80	50	30
B	110	75	35
C	120	70	50
D	105	90	15
E	135	99	36

$$\text{Required difference} = 50 + 90 - 36 = 104$$

Hence, the answer is option B.

53. Ans. B.

In company A:

$$\text{Number of male employees} = 80 \times \frac{5}{8} = 50$$

$$\text{Number of female employees} = 80 - 50 = 30$$

Similarly,

Company	Total number of employees	Male employees	Female employees
A	80	50	30
B	110	75	35
C	120	70	50
D	105	90	15
E	135	99	36

$$\text{Required percentage} = \frac{30 + 35 + 50}{15 + 36} \times 100 = 225.49\% \approx 225\%$$

Hence, the answer is option B.

54. Ans. D.

In company A:

$$\text{Number of male employees} = 80 \times \frac{5}{8} = 50$$

$$\text{Number of female employees} = 80 - 50 = 30$$

Similarly,



**IBPS RRB PO/Clerk
2021 Course (Batch 4)**

START FREE TRIAL

Company	Total number of employees	Male employees	Female employees
A	80	50	30
B	110	75	35
C	120	70	50
D	105	90	15
E	135	99	36

In company F

$$\text{Number of female employees} = 75 \times \frac{4}{3} = 100$$

$$\text{Number of male employees} = 30 \times \frac{5}{6} = 25$$

$$\text{Required ratio} = (100 + 25) : 50 = 125 : 50 = 5 : 2$$

Hence, the answer is option D.

55. Ans. B.

In company A:

$$\text{Number of male employees} = 80 \times \frac{5}{8} = 50$$

$$\text{Number of female employees} = 80 - 50 = 30$$

Similarly,

Company	Total number of employees	Male employees	Female employees
A	80	50	30
B	110	75	35
C	120	70	50
D	105	90	15
E	135	99	36

$$\text{Average salary of female employees in company C} = \frac{1000000 \times 120 - 1200000 \times 70}{50} = \text{Rs.}$$

$$720000$$

Hence, the answer is option B.

56. Ans. C.

The pattern of the series:

$$1000 - 8 = 992$$

$$992 - 27 = 965$$

$$965 - 64 = 901$$

$$901 - 125 = 776$$

$$776 - 216 = 560$$

$$560 - 343 = 217$$

Hence, option C is correct.

57. Ans. B.

The pattern of the series:

$$56 + 14 = 70$$

$$70 - 20 = 50$$

$$50 + 14 = 64$$

$$64 - 20 = 44$$

$$44 + 14 = 58$$

$$58 - 20 = 38$$

Hence, option B is correct.

58. Ans. A.

The pattern of the series:

$$5 + 11 = 16$$

$$16 + 13 = 29$$

$$29 + 17 = 46$$

$$46 + 19 = 65$$

$$65 + 23 = 88$$

$$88 + 29 = 117$$

Hence, option A is correct.

59. Ans. D.

$$10 \times 0.5 - 0.5 = 4.5$$

$$4.5 \times 1 - 1 = 3.5$$

$$3.5 \times 2 - 2 = 5$$

$$5 \times 4 - 4 = 16$$

$$16 \times 8 - 8 = 120$$

$$120 \times 16 - 16 = 1904$$

Hence, option D is correct.

60. Ans. E.

$$6 \times 3 - 1 = 17$$

$$17 \times 3 - 1 = 50$$

$$50 \times 3 - 1 = 149$$

$$149 \times 3 - 1 = 446$$

$$446 \times 3 - 1 = 1337$$

$$1337 \times 3 - 1 = 4010$$

Hence, option E is correct.

61. Ans. E.

City	Number of owners (in thousands)	Rented (in thousands)	Number of owners staying in their house (in thousands)
A	250	100	250 - 100 = 150
B	320	140	320 - 140 = 180
C	400	240	400 - 240 = 160
D	170	80	170 - 80 = 90
E	200	120	200 - 120 = 80

$$\text{Required difference} = (150 - 80) \times 1000 = 70 \times 1000 = 70000$$

Hence, the answer is option E.

62. Ans. C.

City	Number of owners (in thousands)	Rented thousand
A	250	100
B	320	140
C	400	240
D	170	80
E	200	120



**IBPS RRB PO/Clerk
2021 Course (Batch 4)**

START FREE TRIAL

Required ratio = $200 \times 1000 : 140 \times 1000 = 10 : 7$

Hence, the answer is option C.

63. Ans. E.

City	Number of owners (in thousands)	Rented (in thousands)	Number of owners staying in their house (in thousands)
A	250	100	$250 - 100 = 150$
B	320	140	$320 - 140 = 180$
C	400	240	$400 - 240 = 160$
D	170	80	$170 - 80 = 90$
E	200	120	$200 - 120 = 80$

$$\text{Required percentage} = \frac{(160 - 120) \times 1000}{120 \times 1000} \times 100 = \frac{1}{3} = 33\%$$

64. Ans. C.

City	Number of owners (in thousands)	Rented (in thousands)	Number of owners staying in their house (in thousands)
A	250	100	$250 - 100 = 150$
B	320	140	$320 - 140 = 180$
C	400	240	$400 - 240 = 160$
D	170	80	$170 - 80 = 90$
E	200	120	$200 - 120 = 80$

Number of rented houses in city F =

$$180 \times (100 - 40)\% = 108$$

Number of owned houses in city F =

$$180 \times (100 + 30)\% = 234$$

Number of people that are staying in their houses in city F = $234 - 108 = 126$

65. Ans. E.

City	Number of owners (in thousands)	Rented (in thousands)	Number of owners staying in their house (in thousands)
A	250	100	$250 - 100 = 150$
B	320	140	$320 - 140 = 180$
C	400	240	$400 - 240 = 160$
D	170	80	$170 - 80 = 90$
E	200	120	$200 - 120 = 80$

Number of people who pay Rs. 10000 rent = $(100 - 20 - 45)\% \times 120 \times 1000 = 42000$

Total cumulative rent generated from people who pay Rs. 10000 = $42000 \times 10000 = \text{Rs. } 420000000$

66. Ans. B.

$$24.998 \times 6.02 \times ? = 3599$$

By approximation, we get

$$25 \times 6 \times ? \approx 3600$$

$$\Rightarrow ? \approx 24$$

Hence, option B is correct.

67. Ans. C.

By approximation, we get:

$$\sqrt{?} \times 9 + 6\% \text{ of } 250 = 78$$

$$\Rightarrow \sqrt{?} \times 9 + 15 = 78$$

$$\Rightarrow \sqrt{?} \times 9 = 63$$

$$\Rightarrow \sqrt{?} = 7$$

$$\Rightarrow ? = 49$$

68. Ans. D.

$$194.031 + 1549.02 + 49.06 = ?$$

By approximation, we get

$$194 + 1549 + 49 \approx ?$$

$$\Rightarrow ? \approx 1792$$

Hence, option D is correct.

69. Ans. C.

By approximation, we get:

$$(75\% \text{ of } 540 - 45)$$

$$? = \frac{8}{(405 - 45)}$$

$$= \frac{8}{360}$$

$$= \frac{8}{360}$$

$$= 8$$

$$= 45$$

$$= 45$$

70. Ans. D.

$$71.99 + 108.05$$

$$14.01 - 7.99 = ?$$

By approximation, we get

$$72 + 108$$

$$14 - 8 \approx ?$$

$$\frac{180}{6} \approx ?$$

$$\Rightarrow ? \approx 30$$

$$\Rightarrow ? \approx 30$$

Hence, option D is correct.

71. Ans. C.

Number of pizzas sold by shop A on Monday be x.

Number of burgers sold by shop A on Monday = $1.2x$

Number of pizzas sold by shop A on Sunday = 64

Number of burgers sold by shop A on Sunday = $64 + 40 = 104$

Number of pizzas sold by shop B on Monday = $120 \times 3 - x - 104 = 256 - x$

Number of burgers sold by shop B on Monday = $400 - x - 104 - 64 = 232 - x$



IBPS RRB PO/Clerk
2021 Course (Batch 4)

START FREE TRIAL

Number of burgers sold by shop B on Sunday = $400 + 50 - 256 + x - 64 - 1.2x = 130 - 0.2x$

Number of burger and pizzas sold by shop B = $232 - x + 64$

+ $256 - x + 130 - 0.2x$

$\Rightarrow 352 = 682 - 2.2x$

$\Rightarrow x = 150$

Number of burgers sold by shop B on Monday = $256 - x = 106$

Number of pizzas sold by shop B on Monday = $232 - x = 82$

Number of burgers sold by shop B on Sunday = $130 - 0.2x = 100$

Number of burgers sold by shop A on Monday = $1.2x = 150 \times 1.2 = 180$

Number of pizzas sold by shop A on Monday = $x = 150$

Dish/Shop	A		B	
Day	Monday	Sunday	Monday	Sunday
Pizzas	150	104	82	64
Burgers	180	64	106	100

From the table,

Required sum = $150 + 106 = 256$

Hence, the answer is option C.

72. Ans. D.

Number of pizzas sold by shop A on Monday be x .

Number of burgers sold by shop A on Monday = $1.2x$

Number of burgers sold by shop A on Sunday = 64

Number of pizzas sold by shop A on Sunday = $64 + 40 = 104$

Number of burgers sold by shop B on Monday = $120 \times 3 - x - 104 = 256 - x$

Number of pizzas sold by shop B on Monday = $400 - x - 104 - 64 = 232 - x$

Number of burgers sold by shop B on Sunday = $400 + 50 - 256 + x - 64 - 1.2x = 130 - 0.2x$

Number of burger and pizzas sold by shop B = $232 - x + 64$

+ $256 - x + 130 - 0.2x$

$\Rightarrow 352 = 682 - 2.2x$

$\Rightarrow x = 150$

Number of burgers sold by shop B on Monday = $256 - x = 106$

Number of pizzas sold by shop B on Monday = $232 - x = 82$

Number of burgers sold by shop B on Sunday = $130 - 0.2x = 100$

Number of burgers sold by shop A on Monday = $1.2x = 150 \times 1.2 = 180$

Number of pizzas sold by shop A on Monday = $x = 150$

Dish/Shop	A		B	
Day	Monday	Sunday	Monday	Sunday
Pizzas	150	104	82	64
Burgers	180	64	106	100

From the table,

Required percentage = $\frac{82}{180} \times 100 = 45.6\%$

73. Ans. B.

Number of pizzas sold by shop A on Monday be x .

Number of burgers sold by shop A on Monday = $1.2x$

Number of burgers sold by shop A on Sunday = 64

Number of pizzas sold by shop A on Sunday = $64 + 40 = 104$

Number of burgers sold by shop B on Monday = $120 \times 3 - x - 104 = 256 - x$

Number of pizzas sold by shop B on Monday = $400 - x - 104 - 64 = 232 - x$

Number of burgers sold by shop B on Sunday = $400 + 50 - 256 + x - 64 - 1.2x = 130 - 0.2x$

Number of burger and pizzas sold by shop B = $232 - x + 64$

+ $256 - x + 130 - 0.2x$

$\Rightarrow 352 = 682 - 2.2x$

$\Rightarrow x = 150$

Number of burgers sold by shop B on Monday = $256 - x = 106$

Number of pizzas sold by shop B on Monday = $232 - x = 82$

Number of burgers sold by shop B on Sunday = $130 - 0.2x = 100$



IBPS RRB PO/Clerk
2021 Course (Batch 4)

START FREE TRIAL

Number of burgers sold by shop A on Monday = $1.2x = 150 \times 1.2 = 180$
 Number of pizzas sold by shop A on Monday = $x = 150$

Dish/Shop	A		B	
Day	Monday	Sunday	Monday	Sunday
Pizzas	150	104	82	64
Burgers	180	64	106	100

From the table,

$$\text{Required average} = \frac{100 + 104}{2} = 102$$

74. Ans. A.

Number of pizzas sold by shop A on Monday be x .

Number of burgers sold by shop A on Monday = $1.2x$

Number of burgers sold by shop A on Sunday = 64

Number of pizzas sold by shop A on Sunday = $64 + 40 = 104$

Number of burgers sold by shop B on Monday = $120 \times 3 - x - 104 = 256 - x$

Number of pizzas sold by shop B on Monday = $400 - x - 104 - 64 = 232 - x$

Number of burgers sold by shop B on Sunday = $400 + 50 - 256 + x - 64 - 1.2x = 130 - 0.2x$

Number of burger and pizzas sold by shop B = $232 - x + 64 + 256 - x + 130 - 0.2x$
 $\Rightarrow 352 = 682 - 2.2x$
 $\Rightarrow x = 150$

Number of burgers sold by shop B on Monday = $256 - x = 106$

Number of pizzas sold by shop B on Monday = $232 - x = 82$

Number of burgers sold by shop B on Sunday = $130 - 0.2x = 100$

Number of burgers sold by shop A on Monday = $1.2x = 150 \times 1.2 = 180$

Number of pizzas sold by shop A on Monday = $x = 150$

Dish/Shop	A		B	
Day	Monday	Sunday	Monday	Sunday
Pizzas	150	104	82	64
Burgers	180	64	106	100

Using the table,

Number of pizzas and burgers sold by

shop C on Monday = $150 \times \frac{4}{3} + 100 \times 1.25 = 325$

75. Ans. B.

Number of pizzas sold by shop A on Monday be x .

Number of burgers sold by shop A on Monday = $1.2x$

Number of burgers sold by shop A on Sunday = 64

Number of pizzas sold by shop A on Sunday = $64 + 40 = 104$

Number of burgers sold by shop B on Monday = $120 \times 3 - x - 104 = 256 - x$

Number of pizzas sold by shop B on Monday = $400 - x - 104 - 64 = 232 - x$

Number of burgers sold by shop B on Sunday = $400 + 50 - 256 + x - 64 - 1.2x = 130 - 0.2x$

Number of burger and pizzas sold by shop B = $232 - x + 64 + 256 - x + 130 - 0.2x$
 $\Rightarrow 352 = 682 - 2.2x$
 $\Rightarrow x = 150$

Number of burgers sold by shop B on Monday = $256 - x = 106$

Number of pizzas sold by shop B on Monday = $232 - x = 82$

Number of burgers sold by shop B on Sunday = $130 - 0.2x = 100$

Number of burgers sold by shop A on Monday = $1.2x = 150 \times 1.2 = 180$

Number of pizzas sold by shop A on Monday = $x = 150$

Dish/Shop	A		B	
Day	Monday	Sunday	Monday	Sunday
Pizzas	150	104	82	64
Burgers	180	64	106	100

Using the table,

Revenue generated by pizzas sold by shop A = $(150 + 104) \times 50 = \text{Rs. } 12700$



IBPS RRB PO/Clerk
2021 Course (Batch 4)

START FREE TRIAL

Revenue generated by burgers sold by shop A = $(180 + 64) \times 25 = \text{Rs. } 6100$

Required revenue = $12700 + 6100 = \text{Rs. } 18800$

76. Ans. C.

Number of pizzas sold by shop A on Monday be x.

Number of burgers sold by shop A on Monday = $1.2x$

Number of burgers sold by shop A on Sunday = 64

Number of pizzas sold by shop A on Sunday = $64 + 40 = 104$

Number of burgers sold by shop B on Monday = $120 \times 3 - x - 104 = 256 - x$

Number of pizzas sold by shop B on Monday = $400 - x - 104 - 64 = 232 - x$

Number of burgers sold by shop B on Sunday = $400 + 50 - 256 + x - 64 - 1.2x = 130 - 0.2x$

Number of burger and pizzas sold by shop B = $232 - x + 64$

+ $256 - x + 130 - 0.2x$

$\Rightarrow 352 = 682 - 2.2x$

$\Rightarrow x = 150$

Number of burgers sold by shop B on Monday = $256 - x = 106$

Number of pizzas sold by shop B on Monday = $232 - x = 82$

Number of burgers sold by shop B on Sunday = $130 - 0.2x = 100$

Number of burgers sold by shop A on Monday = $1.2x = 150 \times 1.2 = 180$

Number of pizzas sold by shop A on Monday = $x = 150$

Dish/Shop	A		B	
Day	Monday	Sunday	Monday	Sunday
Pizzas	150	104	82	64
Burgers	180	64	106	100

On Tuesday,

Number of burgers sold by shop A = $150 \times 1.2 = 180$

Number of pizzas sold by shop A = $104 \times 1.25 = 130$

Required difference = $180 - 130 = 50$

77. Ans. D.

Length of train A = $54 \times \frac{5}{18} \times 16 = 240$ m

Length of train B = $36 \times \frac{5}{18} \times 30 = 300$ m

Required time = $\frac{240 + 300}{(54 + 36) \times \frac{5}{18}} = \frac{540}{25} = 21.6$ seconds

Hence, option D is correct.

78. Ans. C.

Downstream speed of the boat = $\frac{168}{16} = 10.5$ km/h

Speed of the boat in still water = $10.5 - 3.5 = 7$ km/h

Speed of the boat in upstream = $7 - 3.5 = 3.5$ km/h

Required distance = $3.5 \times 18 = 63$ km

Hence, option C is correct.

79. Ans. A.

Time taken by Anushka to complete

the whole work = $\frac{32}{80} \times 100 = 40$ days

Time taken by Bhanu to complete the whole work = $40 \times 180\% = 72$ days

Let the total work be 360 (LCM of 40, 72 and 18) units.

Amount of work done by Anushka in one day = $\frac{360}{40} = 9$ units

Amount of work done by Bhanu in one day = $\frac{360}{72} = 5$ units

Amount of work done by Anushka, Bhanu and Chitra in one day = $\frac{360}{18} = 20$ units

Amount of the work done by Chitra in one day = $20 - 9 - 5 = 6$ units

Time taken by Chitra to complete the work = $\frac{360}{6} = 60$ days



IBPS RRB PO/Clerk
2021 Course (Batch 4)

START FREE TRIAL

Time taken by Chitra to complete the 75% of the work = $60 \times 75\% = 45$ days

Hence, option A is correct.

80. Ans. C.

Total number of balls in the bag = $x + x + 4 + 2x = 4x + 4$

Probability of picking a black ball = $\frac{4}{9}$

ATQ,

$$\frac{2x}{4x + 4} = \frac{4}{9}$$

$$\Rightarrow 18x = 16x + 16$$

$$\Rightarrow 2x = 16$$

$$\Rightarrow x = 8$$

Total number of balls in the bag = $4 \times 8 + 4 = 36$ balls

Hence, option C is correct.

81. Ans. B.

- Rs. 10,000 is the highest denomination note ever printed by the RBI.

- RBI was established in 1935.

- The first RBI governor was Osborne Smith and First Indian RBI governor was CD Deshmukh.

82. Ans. D.

- The national council for transgender persons has been set up by the Centre under the Transgender Persons (Protection of Rights) Act, 2019 to assist the community with better facilities.

- The Ministry of Social Justice and Empowerment has set up this council to cater to the transgender community with various essential needs.

- The Union Minister of social justice will be the head of the commission.

- The commission will have representatives from ten central departments, five states, and members of the transgender community.

- The council will also have joint secretary-level members from various ministries like health, home,

minority affairs, education, rural development, etc.

83. Ans. C.

To make the Pradhan Mantri Jan Dhan Yojana (PMJDY) scheme more attractive, the finance ministry decided to double the overdraft facility from Rs 5,000 to Rs 10,000.

The PMJDY was launched by Prime Minister Narendra Modi on 15 August 2014 as a national mission for financial inclusion to ensure access of financial services like bank accounts, insurance and pensions to the masses.

84. Ans. A.

If two parallel lines are drawn on the front part of a cheque, it is called a 'Crossed' Cheque. In this type of a cheque, the payee cannot withdraw money in cash but money can transfer in payee account. This type of cheque is endorsable.

85. Ans. B.

A minimum yearly deposit of Rs. **500** is required to open and maintain a PPF account. A PPF account holder can deposit a maximum of Rs **1.5 lacs** in his/her PPF account (including those accounts where he is the guardian) per financial year. There must be a guardian for PPF accounts opened in the name of minor children. Parents can act as guardians in such PPF accounts of minor children. Any amount deposited in excess of Rs 1.5 lacs in a financial year won't earn any interest. The amount can be deposited in lump sum or in a maximum of 12 installments per year. The current interest rate will be 7.1% and effective from April 2020 to June 2020.

86. Ans. B.

Brazilian mathematician Dr Carolina Araujo was awarded the 'Ramanujan Award for Young Mathematician of the year 2020' at a ceremony organized



**IBPS RRB PO/Clerk
2021 Course** (Batch 4)

START FREE TRIAL

through video conference by the Department of Science and Technology on 9 December 2020. His scope focuses on 'Birational Geometry', which aims to classify and describe the structure of algebraic varieties. He is a mathematician of the Institute for Pure and Applied Mathematics (IMPA) of Rio de Janeiro (Brazil).

87. Ans. D.

- The Hornbill Festival is celebrated every year in the Naga Heritage village of Kisama, Nagaland.

- The festival coincides with the Statehood Day of Nagaland which is observed on December 1.

- It is tourism promotional extravaganza to revive, protect and preserve the richness and uniqueness of the Naga heritage. It is also called as the 'Festival of Festivals'.

88. Ans. B.

.

89. Ans. A.

- Bharat Sanchar Nigam Limited (BSNL) in partnership with the State Bank of India (SBI) has launched a Unified Payments Interface (UPI) based payment platform, Bharat InstaPay to enable all types of channel partners of BSNL to digitize their payment transactions on a round the clock basis/ real-time basis.

- In particular it will help the prepaid sellers to buy the services immediately for sale.

- It will improve BSNL's credibility towards partners, & will help in growth of partners' business at a faster pace.

90. Ans. B.

- * India's first seaplane service was started in Gujarat from 31 October on the birth anniversary of Sardar Vallabhbhai Patel.

- * It connects Sabarmati Riverfront in Ahmedabad to the Statue of Unity in Kevadia.

- * The service has been operated by Spicejet Airlines.

91. Ans. D.

According to Census 2011, Urban Distribution Persons (in %):

- Rural: 68.84 %

- Urban: 31.16 %

92. Ans. A.

The Full form of FCCB is Foreign currency convertible bonds

FCCB is a simple way traversed by several companies to aggregate their capital.

93. Ans. C.

The maximum deposit allowed in India Post Payment Bank (IPPB) is Rs. 1 lakh.

According to the guidelines, payments banks can open small savings accounts and accept deposits of up to **Rs.1 lakh** per individual customer and provide remittance services.

94. Ans. D.

There will be a uniform premium of only 2% to be paid by farmers for all Kharif crops and 1.5% for all Rabi crops. In case of annual commercial and horticultural crops, the premium to be paid by farmers will be only 5%. The premium rates to be paid by farmers are very low and balance premium will be paid by the Government to provide full insured amount to the farmers against crop loss on account of natural calamities.

Objectives

- To provide insurance coverage and financial support to the farmers in the event of failure of any of the notified crop as a result of natural calamities, pests & diseases.

- To stabilise the income of farmers to ensure their continuance in farming.



**IBPS RRB PO/Clerk
2021 Course** (Batch 4)

START FREE TRIAL

- To encourage farmers to adopt innovative and modern agricultural practices.

- To ensure flow of credit to the agriculture sector.

95. Ans. C.

Since 2010, International Tiger Day is celebrated on 29 July every year. It is an annual celebration to raise awareness about tiger conservation.

96. Ans. D.

- Former RBI governor Urjit Patel has authored a book titled 'Overdraft: Saving the Indian Saver'. The book will be published by HarperCollins India.

97. Ans. E.

* Ashok Leyland, IndusInd Bank, NxtDigital Ltd and Cyqurex Systems Private Limited are the part of Hinduja Groups.

98. Ans. D.

* Monetary Authority of Singapore (MAS) is the central bank and financial regulatory authority of Singapore.

* It administers the various statutes pertaining to money, banking, insurance, securities and the financial sector in general, as well as currency issuance.

* It was established in 1971.

99. Ans. C.

* G20 summit of 2020 was hosted by Saudi Arabia recently.

* G20 summits are to be held in Italy in 2021, Indonesia in 2022, India in 2023 and Brazil in 2024.

100. Ans. B.

* China is not a G7 nation

* Group of Seven (G7) is an intergovernmental organization consisting of Canada, France, Germany, Italy, Japan, the United Kingdom and the United States.

101. Ans. A.

* Full form of OTT: Over-The-Top

* It refers to the delivery of content over the internet rather than through a traditional cable or broadcast provider.

102. Ans. C.

* Payments banks is a new Indian model of banks conceptualised by the Reserve Bank of India (RBI).

* It can have restricted deposit of ₹100,000.

103. Ans. B.

* Full form of ASHA is Accredited Social Health Activist.

* The ASHA scheme is presently in place in 33 states (except Goa, Chandigarh & Puducherry).

104. Ans. D.

* Popular playback singer KS Chithra has been conferred with Padma Vibhushan in 2021 for her contribution to Indian film music.

* She won the Padma Shri, one of the highest civilian honour in 2005.

105. Ans. C.

* Katrin Jakobsdottir is the Prime Minister of Iceland.

* She is the current prime minister of Iceland since 2017.

* Iceland is a Nordic island country in the North Atlantic Ocean.

* Capital of Iceland: Reykjavík.

106. Ans. A.

* Hiroshima Day is observed on August 6 every year to promote "peace politics".

* The day is a reminder of the bombing attack on Hiroshima and Nagasaki by the United States during World War II in 1945.

107. Ans. D.

• Jai Bhawani women's cooperative textile mill which is set to come up at Parbhani, Maharashtra will be the first Textile Mill in Asia which will operate on Solar Power.

• The Textile Mill is spread across Thirty acres of land and will process cotton to cloth.



**IBPS RRB PO/Clerk
2021 Course (Batch 4)**

START FREE TRIAL

- Once Functional, the mill will provide jobs to many women in the district.
 - Ginning, Pressing, Weaving and Spinning of cotton will be done in the mill itself.
 - It is being set up at a cost of INR 100 Crores and will add momentum to the industrial sector in the district.
 - Parbhani is the leading cotton producing district in Maharashtra. Majority of the farmers grow cotton as it is seen as a profitable investment.
108. Ans. A.
- The full form of MSP is given in the first line of the passage and it is minimum support prices. Hence, option A is correct.
109. Ans. B.
- Kerala Tourism's 'Human by Nature Print Campaign' bagged the Prestigious Pacific Asia Travel Association (PATA) Grand Title Winner 2020 for Marketing.
 - The awards were announced during a presentation ceremony of Virtual PATA Travel Mart 2020 in Beijing.
 - The PATA Awards are supported and sponsored by Macao Government Tourist Office (MGTO).
 - 'Human by Nature' was a marketing strategy to revive tourism that was hit by the 2018 floods and the Nipah outbreak.
 - Showcasing culture and daily life of the people, it was conceptualised and scripted by Stark Communications.
 - The campaign had helped Kerala Tourism achieve record growth of 17.2% in tourism arrivals in 2019, the highest in 24 years.
110. Ans. C.
- 'Pradhan Mantri Krishi Sinchayee Yojana' was launched on 1 July 2015 with the motto of 'Har Khet Ko Paani'. The overarching vision of Pradhan Mantri Krishi Sinchayee Yojana (PMKSY) is to ensure access to some

means of protective irrigation to all agricultural farms in the country, to produce 'per drop more crop', thus bringing much desired rural prosperity. Amongst various objectives in the Scheme are convergence of investments in irrigation at the field level, physical access of water on the farm, and expansion of cultivable area under assured irrigation (Har Khet ko pani), enhancement of the adoption of precision-irrigation, reduction of wastage of water etc.

111. Ans. B.

The temple of Angkor Wat is situated in Cambodia. The stories of the Ramayana and Mahabharata are narrated on the walls of the temple.

112. Ans. C.

- **Payee** is the party who presents the cheque for payment. He is the person who receives money from bank.

- He is the party in favour of whom cheque is issued.

- The maker of a cheque is called as Drawer.

- And the person to whom the cheque is directed to pay is Drawee.

113. Ans. A.

- Iconic actor Soumitra Chatterjee passed away due to Covid-19 complications at the age of 85.

- He had tested Covid-19 positive on October 6 and was hospitalised for forty days. Known for his collaborations with Oscar winning director Satyajit Ray, Chatterjee had been awarded several prestigious awards for his contributions to the field of cinema.

- Let us take you through the list of some of the coveted awards granted to the legendary actor.

114. Ans. B.

- Over the years, card payments in India have become popular and contactless cards like Visa's payWave



**IBPS RRB PO/Clerk
2021 Course (Batch 4)**

START FREE TRIAL

and Mastercard's PayPass are also becoming mainstream.

- These contactless cards today are gaining a lot of traction. They are not only helping people make small transactions quickly but are also doing away with the need for PINs.
- Contactless cards are embedded with integrated circuits that can store and process data and communicate with a terminal using Near Field Communication (NFC) technology.
- These cards also have an antenna and magnetic strip embedded in the plastic that completes a transaction.

115. Ans. D.

NABARD All India Financial Inclusion Survey (NAFIS), conducted by National Bank for Agriculture and Rural Development (NABARD), revealed that farm households register higher income than the families solely dependent on non-farm livelihood activities in rural areas.

116. Ans. B.

- Vancouver-based Resonance Consultancy Ltd., which deals in real estate, released its "World's Best Cities for 2021" list, naming London as the best city.
- London was followed by USA's New York. Only one Indian city Delhi, made it to the list, taking the 62nd position.
- Paris (France), Moscow (Russia), Tokyo (Japan), Dubai (UAE), Singapore, Barcelona (Spain), Los Angeles (USA), and Madrid (Spain) took the third, fourth, fifth, sixth, seventh, eighth, ninth, and tenth rank respectively. The other cities that were named are Rome (Italy) and Toronto (Canada).
- India has only one representative on the list. Delhi is ranked 62 on the list, as per the Indian Express report.

117. Ans. C.

- RSETIs is a unique initiative which not only provides training but also extends continuous support for 2 years.

- RSETIs identifies, improves, trains and assists rural youth to generate self-employment as an alternative career and a source of livelihood.

- RSETIs trains youth in the age group between 18-45 years, irrespective of caste, creed or religion.

- RSETIs have trained over 24.30 lakh unemployed candidates, of which 15.42 lakh candidates have successfully settled with a settlement percentage of 69%.

118. Ans. D.

A non performing asset (NPA) is a loan or advance for which the principal or interest payment remained overdue for a period of 90 days.

Description: Banks are required to classify NPAs further into Substandard, Doubtful and Loss assets.

1. Substandard assets: Assets which has remained NPA for a period less than or equal to 12 months.

2. Doubtful assets: An asset would be classified as doubtful if it has remained in the substandard category for a period of 12 months.

3. Loss assets: As per RBI, "Loss asset is considered uncollectible and of such little value that its continuance as a bankable asset is not warranted, although there may be some salvage or recovery value."

119. Ans. D.

POSHAN Abhiyaan is a multi-ministerial convergence mission with the vision to ensure attainment of malnutrition free India by 2022. The objective of POSHAN Abhiyaan to reduce stunting in identified Districts of India with the highest malnutrition



**IBPS RRB PO/Clerk
2021 Course (Batch 4)**

START FREE TRIAL

burden by improving utilization of key Anganwadi Services and improving the quality of Anganwadi Services delivery. Its aim to ensure holistic development and adequate nutrition for pregnant women, mothers and children.

120. Ans. A.

National Productivity Council of India (NPC), established in the year 1958, is an autonomous organization under Department for Promotion of Industry & Internal Trade, Ministry of Commerce and Industry, Government of India. Besides undertaking research in the area of productivity, NPC has been providing consultancy and training services in areas of Industrial Engineering, Agri-Business, Economic Services, Quality Management, Human Resources Management, Information Technology, Technology Management, Energy Management, Environmental Management etc., to the Government and Public & Private sector organizations. NPC is a constituent of the Tokyo-based Asian Productivity Organisation (APO), an Inter-Governmental Body of which the Government of India is a founding member.

121. Ans. E.

The paragraph needs to have a theme for discussion, which is being provided by statement D, making it the first in sequence. Statement A will follow next since it continues the claim made in statement D (asks so much of fragile ecosystems), and adds to it by saying "And increasingly, we have placed a new demand..." Of the three remaining statements, statement C will come first since it makes a general statement about plants. Statement B will follow by providing more information on 'this everyday miracle', thereby referring

to the absorption of CO₂ by plants. Statement E comes as a conclusion to the paragraph that compiles the society's demand from plants with the need to conserve them.

Thus, the sequence of the rearranged paragraph will be **DACBE**.

Thus, option E is the correct answer.

122. Ans. A.

The paragraph needs to have a theme for discussion, which is being provided by statement D, making it the first in sequence. Statement A will follow next since it continues the claim made in statement D (asks so much of fragile ecosystems), and adds to it by saying "And increasingly, we have placed a new demand..." Of the three remaining statements, statement C will come first since it makes a general statement about plants. Statement B will follow by providing more information on 'this everyday miracle', thereby referring to the absorption of CO₂ by plants. Statement E comes as a conclusion to the paragraph that compiles the society's demand from plants with the need to conserve them.

Thus, the sequence of the rearranged paragraph will be **DACBE**.

Thus, option A is the correct answer.

123. Ans. B.

The paragraph needs to have a theme for discussion, which is being provided by statement D, making it the first in sequence. Statement A will follow next since it continues the claim made in statement D (asks so much of fragile ecosystems), and adds to it by saying "And increasingly, we have placed a new demand..." Of the three remaining statements, statement C will come first since it makes a general statement about plants. Statement B will follow by providing more information on 'this everyday miracle', thereby referring



**IBPS RRB PO/Clerk
2021 Course** (Batch 4)

START FREE TRIAL

to the absorption of CO₂ by plants. Statement E comes as a conclusion to the paragraph that compiles the society's demand from plants with the need to conserve them.

Thus, the sequence of the rearranged paragraph will be **DACBE**.

Thus, option B is the correct answer.

124. Ans. C.

The paragraph needs to have a theme for discussion, which is being provided by statement D, making it the first in sequence. Statement A will follow next since it continues the claim made in statement D (asks so much of fragile ecosystems), and adds to it by saying "And increasingly, we have placed a new demand..." Of the three remaining statements, statement C will come first since it makes a general statement about plants. Statement B will follow by providing more information on 'this everyday miracle', thereby referring to the absorption of CO₂ by plants. Statement E comes as a conclusion to the paragraph that compiles the society's demand from plants with the need to conserve them.

Thus, the sequence of the rearranged paragraph will be **DACBE**.

Thus, option C is the correct answer.

125. Ans. D.

The paragraph needs to have a theme for discussion, which is being provided by statement D, making it the first in sequence. Statement A will follow next since it continues the claim made in statement D (asks so much of fragile ecosystems), and adds to it by saying "And increasingly, we have placed a new demand..." Of the three remaining statements, statement C will come first since it makes a general statement about plants. Statement B will follow by providing more information on 'this everyday miracle', thereby referring

to the absorption of CO₂ by plants. Statement E comes as a conclusion to the paragraph that compiles the society's demand from plants with the need to conserve them.

Thus, the sequence of the rearranged paragraph will be **DACBE**.

Thus, option D is the correct answer.

126. Ans. A.

'Their' is a possessive pronoun denoting that something belongs to a group of people. 'There' is often used as a pronoun to introduce a word or a clause. In the given sentence, 'there' needs to replace 'their' since it is introducing the clause 'a rumour afloat'.

Thus, option A is the correct answer.

127. Ans. C.

The error lies in the use of the word 'equipments'. 'Equipment', meaning a set of necessary tools, clothing, etc. for a particular purpose, is an uncountable noun, and does not have a plural form.

Thus, option C is the correct answer.

128. Ans. C.

The error lies in the use of the wrong form of the verb. To complement the auxiliary 'was', 'raining' needs to be used to form the past continuous tense.

Thus, option C is the correct answer.

129. Ans. C.

Effect: the **result** of a particular influence. (in this case, the influence of the presentation)

Affect: to have an **influence** on someone or something. (I was deeply affected by this documentary).

The context of the sentence requires 'effect' to replace 'affect'.

Thus, option C is the correct answer.

130. Ans. E.

The sentence is grammatically and contextually correct. Thus, option E is the correct answer.

131. Ans. A.



IBPS RRB PO/Clerk
2021 Course (Batch 4)

START FREE TRIAL

Only A works here – all the other options present a very complicated way of combining the 4 parts. A combines the 4 parts logically and in the most efficient manner without diluting the intended implication of the statement.

Therefore, option A is the correct answer to this question.

132. Ans. C.

The subject of the sentence is that she had decided to end her life by consuming poison, what made this very shocking is that all other aspects of her life – job, marriage and children were highly satisfactory. C is the only option that combines all the 4 sentence parts in the most logical and correct way while making the intended meaning very clear.

Therefore, option C is the correct answer to this question.

133. Ans. B.

The main subject of the sentence set is that exhaust from cars is dangerous for ozone in the atmosphere is a critical ingredient for human existence. Of the given options, sentence B expresses this perfectly and in the most optimum manner.

Therefore, option B is the correct answer to this question.

134. Ans. A.

Only A combines the 4 sentence parts perfectly – maintaining grammatical logic as well as retaining the inherent meaning. In the other options, either the meaning gets wrongly conveyed (B – makes it seem that scientists are not sure why the storm grows taller) or the combining is incoherent (C, D) Therefore, option A is the correct answer to this question.

135. Ans. B.

From the given options, B is clearly the most suitable option. In the other options, the linking of the sentences is not proper. B expresses the implied

meaning most coherently and correctly without being too long drawn out.

Therefore, option B is the correct answer to this question.

136. Ans. E.

All the given options are desired in a good leader. The given options are parameters of a person with higher EQ. People with high EQ are better able to improve not only themselves but their whole team, creating a positive influence. They are reliable by both the management and the staff and are adept at conflict resolutions. Hence, the correct answer is E.

137. Ans. B.

"They put the wellbeing of the group before their own success..." This might be misused by others to achieve their goals and leave the rest of them behind. Hence, the correct answer is B.

138. Ans. D.

Only option III is correct. The reasons are as follows:

I: "While it is of course possible for creative people to be emotionally intelligent..." This shows that people with high EQ will be creative. Their number, however, can be less. So, option I is false.

II: "Self-Management enables us to feel negative emotions and prevent them from having a disruptive impact." When we 'feel' emotions, we do not hide them, but rather process them. Insecurity can be one such negative emotion. Self-management helps us feel or process it and not affect our professional lives. So, option II is false.

III: Artists are creative people, which is an attribute associated with low EQ. Such people also show nonconformism. So, option III is true. Hence, the correct answer is D.



**IBPS RRB PO/Clerk
2021 Course (Batch 4)**

START FREE TRIAL

139. Ans. A.

"The risk of overusing one's social skills is in focusing heavily on the emotional aspects of communication while neglecting logical arguments and the more transactional aspects of communication." This indicates that when we remove emotions from a conversation all that remains is logic. There might be "other transactional aspects", but logic is definitely one of them. Hence, the correct answer is A.

140. Ans. C.

All the options correctly provide the reasons behind the caution. The reasons are as follows:

I: "Relationship Management", which is "...at its most basic applied empathy", is considered as a positive trait. But under different circumstances, "...it can slide from influencing others to engaging in tactics of manipulation."

II: "...the more common pattern for people with higher EQ is to be great at following processes, building relations, and working with others" shows that people with higher EQ are more likely to be working towards a common goal, rather than follow their individual aims. This will definitely affect their individuality.

III: "Although the downside of higher EQ remains largely unexplored, there are many reasons for being cautious about a one-size-fits-all..." This suggests that we already have enough reasons to be cautious about one-size-fits-all EQ, despite the subject not being studied thoroughly. The author suggests that if this trend continues, we might discover more flaws.

Hence, the correct answer is C.

141. Ans. C.

Predispose means make someone liable or inclined to a specified attitude, action, or condition.

Cling means adhere or stick firmly or closely to; be hard to part or remove from.

Linger means stay in a place longer than necessary because of a reluctance to leave.

Dissuade means persuade (someone) not to take a particular course of action.

Mingle means mix or cause to mix together.

Fuse means to melt or make two things melt together, especially at a high temperature.

Hence, the correct answer is C.

142. Ans. B.

People who appreciate receiving constructive criticism, are likely "...to improve their own performance...", which means option C is true. They are also a "...positive influence on the rest of the workforce." This is because once their peers see these employees improve themselves through constructive criticism, they also get motivated to do so, which in return instils confidence, and thus, option D is also true. Hence, the correct answer is B.

143. Ans. E.

All the given options are correct. The reasons are as follows:

I: "More recently, emotional intelligence has entered the roster as one of the most desirable traits..." shows that this requirement did not exist until recent times. So, option I is true.

II: Socially aware employees "...are service oriented, a great listener, and particularly good in public-facing roles." Engaging with a client is a public-facing role. The remaining traits make the client feel well attained at. So, option II is true.

III: "In addition, high EQ scores can be hard to shake up..." this could be seen as stubbornness where the



**IBPS RRB PO/Clerk
2021 Course (Batch 4)**

START FREE TRIAL

employee might not want to change their opinion. So, option III is true. Hence, the correct answer is E.

144. Ans. A.

Since, we are talking about facts, the correct tense should be simple present tense for both the verbs ("can" and "are"). Only option A has both verbs in simple present tense. Hence, the correct answer is A.

145. Ans. D.

Roster means an itemized list.

Rota means a list showing when each of a number of people has to do a particular job.

Book means a set of records or accounts.

Agenda means a list of items to be discussed at a formal meeting.

List means a number of connected items or names written or printed consecutively, typically one below the other.

Tally means a current score or amount.

Hence, the correct answer is D.

146. Ans. B.

The word at position A needs to be a verb. This makes 'woke' the best choice for position A to complete the phrase 'woke up'. The word at position B needs to be an adverb to aptly qualify the following verb 'nestled'. This task is accomplished by 'comfortably'. The word at position C needs to be a noun to become the indirect object of the sentence. Thus, 'feet' is the best choice for position C. Thus, the rearranged sequence of the words will be **BCA**, making option B the most appropriate answer.

147. Ans. D.

The word at position A needs to be verb to best denote the action of the coach. Thus, 'goaded' is the best choice for position A. This leaves 'pep' for position B, where it fits in perfectly to complete the phrase 'pep talk'

meaning a short speech intended to encourage people to work harder or try to win a game or competition.

Thus, the rearranged sequence of words will be BAC, making option D the correct answer.

148. Ans. E.

The emboldened words are correctly placed in their given positions. Thus, option E is the correct answer.

149. Ans. A.

The word at position A needs to be an adjective to denote the feeling of the children. This task is best accomplished by 'proud'. The word at position B needs to be an adjective to best qualify the noun 'sandcastle'. This is accomplished by 'elaborate', leaving the verb 'built' for position C, where it fits aptly to complement the auxiliary 'had'.

Thus, the sequence of the words after rearrangement is BCA, making option A the correct answer.

150. Ans. B.

The word at position A needs to be an adverb to best qualify the following verb 'stared', while the word at position B needs to be a verb to best denote the action of the kite. Exchanging the words at A and B makes them contextually appropriate.

Thus, the rearranged sequence of words will be BAC, making option B the correct answer.

151. Ans. B.

The term review means to recheck. Thus, it fits perfectly in sentence B.

In sentence A, 'review' must be replaced with 'customer'.

In sentence C, 'review' must be replaced with 'week'.

In sentence D, 'review' must be replaced with 'complained'.

Thus option B is the correct answer.

152. Ans. A.



IBPS RRB PO/Clerk
2021 Course (Batch 4)

START FREE TRIAL

The term 'support' only fits in sentence A.

In Sentence B, 'policy' must replace 'Support'.

In Sentence C 'rash', must replace 'Support'

In Sentence D 'surprised', must replace 'Support'

153. Ans. D.

The term free is only used appropriately in sentence D.

In Sentence A, 'buy' must replace 'free'.

In Sentence b 'lips/mouth' must replace 'free'

In Sentence C 'accept' must replace 'free'.

Thus, option D is the correct answer.

154. Ans. B.

The term aspire means to direct one's hopes or ambitions towards achieving something.

Thus, it only fits in sentence B.

In Sentence A, 'drive' must replace 'aspire'.

In Sentence C 'attraction' must replace 'aspire'.

In Sentence D 'take' must replace 'aspire' as the phrase is 'take down'.

Thus, option B is the correct answer.

155. Ans. C.

The term miniscule means extremely small or tiny.

Thus, it only fits in sentence C.

In sentence A, 'sound' must replace 'miniscule'.

In sentence B, 'random/shady' must replace 'miniscule'.

In sentence D, 'delayed' must replace 'miniscule'.

Thus, option C is the correct answer.

156. Ans. E.

The given sentence is giving perfect sense. The context of the sentence is that it is obvious that soon, there will be no choice left to the state and local authorities to restrict the activities in order to manage with the disturbing

surge of cases. Hence, option E is the right answer choice.

157. Ans. C.

A-B and D-E will need replacement to make the sentence grammatically correct and contextually meaningful. The context of the sentence is Iran is insisting USA to remove the sanctions first while Washington is asking Iran to take the first step and resume its compliance with the pact, the dispute between USA and Iran remains to be huge. 'Sanctions' should come in place of 'insisting' and 'remains' should come in place of 'pact' to make the sentence contextually meaningful and grammatically correct. Hence, option C is the right answer choice.

158. Ans. B.

The context of the sentence is that the void created by the departure of the US military machine should be filled forces that are not contrary to the peace, prosperity and permanency of Afghanistan and its neighbours. In this context, C-E i.e. 'forces-stability' will interchange each other to make the sentence grammatically correct and contextually meaningful. Hence, B will be right answer choice.

159. Ans. B.

The given sentence above intends to state that Jonathan is aware of the fact that Shashi Tharoor has accused the British of building the railways so that they can smoothen the process of getting the loot out of India. In this context, C-E should be interchanged to make the sentence grammatically correct and contextually meaningful. Hence, B will be right answer choice.

160. Ans. E.

The above given sentence intends to state that India's federal power structure was highly reinforced during the 1990s as an outcome of a reluctant placing of new political



IBPS RRB PO/Clerk
2021 Course (Batch 4)

START FREE TRIAL

realities. Hence, D-E should interchange each other to make the sentence grammatically correct and contextually meaningful. Hence, E will be right answer choice.

161. Ans. A.

Viruses are often **delivered to a PC** through an **email attachment** and are often designed to do harm.

Note:- A **computer virus** is a **malware program** that, when executed, replicates by inserting copies of itself into other **computer programs**, data files, or the boot sector of the hard drive; when this replication succeeds, the **affected areas** are then said to be "**infected**".

162. Ans. A.

A **switched-mode power supply** is an **electronic power supply** that incorporates a switching regulator to **convert electrical power** efficiently. An **SMPS transfers power** from a source, like mains power, to a load, such as a **personal computer**, while **converting voltage** and current characteristics.

163. Ans. B.

Embedded computers are computers that are a part of a machine or device. Embedded computers generally execute a program that is stored in nonvolatile memory and is only intended to operate a specific machine or device.

164. Ans. C.

A router is a device that forwards data packets along networks. A router is connected to at least two networks, commonly two LANs or WANs or a LAN and its ISP's network. Routers are located at gateways, the places where two or more networks connect.

165. Ans. E.

Cyber slacking is a term used when employees use their work internet connection for personal reasons for excessive amounts of time. Cyber

slacking can cause a number of problems, from the obvious loss of productivity to legal liability as well as virus infection.

166. Ans. D.

CPU(central Processing Unit) is a **part** of the **computer**. All the others can be used to **access** the net.

167. Ans. B.

Pascal is a historically influential imperative and **procedural programming language**, designed in 1968–69 and **published in 1970** by **Niklaus Wirth** as a small and efficient language intended to encourage good programming practices using structured programming and data structuring.

168. Ans. B.

A **patch** is a piece of software designed to update a **computer program** or its supporting data to **fix** or improve it.

169. Ans. C.

The **hexadecimal numeral system**, is a numeral system made up of base 16.

170. Ans. C.

Software piracy is the illegal/unauthorized copying or distribution of copy righted software. This can be done by copying, downloading, sharing, selling, or installing multiple copies onto personal or work computers.

171. Ans. B.

Hibernation is a power-saving state designed primarily for laptops. While **sleep** puts your work and **settings in memory** and draws a small amount of power, hibernation puts your **open documents** and programs on your hard disk and then turns off your computer.

172. Ans. E.

In Excel, move somewhere in a row you want to hide and press **Ctrl+9**. The entire current row is hidden and



**IBPS RRB PO/Clerk
2021 Course** (Batch 4)

START FREE TRIAL

you don't need to select the entire row, just have your cursor somewhere in the row.

173. Ans. C.

Random-access memory (RAM) is a form of computer data storage. A random-access memory device allows data items to be accessed (read or written) in almost the same amount of time irrespective of the physical location of data inside the memory.

174. Ans. C.

A **hard copy** is a printed copy of information from a computer. Sometimes referred to as a **printout**, a hard copy is so-called because it exists as a physical object.

175. Ans. D.

Encryption is the most effective way to achieve **data security**. To read an encrypted file you must have access to a **secret key** or password that enables you to decrypt it.

176. Ans. A.

In computing, a **nibble** is a **four-bit** aggregation. It is also known as **half-byte**.

177. Ans. A.

Computer-aided design (CAD) is the use of computer systems to assist in the creation, modification, analysis, or optimization of a design.

Note:- CAD software is used to increase the productivity of the designer, improve the quality of design, improve communications through documentation, and to create a database for manufacturing. CAD output is often in the form of electronic files for print, machining, or other manufacturing operations.

178. Ans. A.

Firewalls are frequently used to prevent **unauthorized** Internet users from accessing private networks **connected to the Internet**, especially intranets.

Note:- All messages entering or leaving the intranet pass through the firewall, which examines each message and blocks those that do not meet the specified security criteria.

179. Ans. A.

An Arithmetic Logic Unit (ALU) is a digital electronic circuit that performs arithmetic and bitwise logical operations on integer binary numbers. It is a fundamental building block of the Central Processing Unit (CPU) found in many computers.

180. Ans. C.

It's easy to get overwhelmed with the multiplicity of audio file types, each with a different extension .wav, .mid, .kar, .mp3 to name just the more common ones.

181. Ans. C.

WAP (Wireless Application Protocol) is a **technical standard** for accessing information over a **mobile** wireless network.

182. Ans. A.

World Computer Literacy Day which falls each year on **December 2nd** aims to curb the digital divide that exists in the world.

183. Ans. B.

Malicious software (malware) is any software that gives partial to full control of your computer to do whatever the malware creator wants. Malware can be a virus, worm, trojan, adware, spyware, rootkit, etc.

184. Ans. A.

A database administrator is a person responsible for the design, implementation, maintenance and repair of an organization's database.

185. Ans. E.

Access speed measures the **amount of time** required by the storage device to retrieve data and programs.

186. Ans. B.

Transistors replaced vacuum tubes and ushered in the **second**



**IBPS RRB PO/Clerk
2021 Course (Batch 4)**

START FREE TRIAL

generation of computers. The transistor was far superior to the **vacuum tube**, allowing computers to become **smaller**, faster, cheaper, more energy-efficient and more reliable than their **first-generation** predecessors.

187. Ans. B.

A red triangle in the upper-right corner of a cell indicates that a comment is in the cell. If you rest the mouse pointer over the triangle, you can view the text of the comment.

188. Ans. B.

- A **primary key** is a key in a relational database that is **unique for each record**.

- It is a unique identifier, such as a driver license number, telephone number or vehicle identification number (VIN).

- A relational database must always have one and only one primary key.

189. Ans. C.

The PNG, JPEG, WMF, EMF and GIF formats are most often used to display images on the Internet.

190. Ans. B.

The domain name org is a generic top-level domain (gTLD) of the Domain Name System (DNS) used in the Internet. The name is truncated from organization.

Note: The domain ".org" was one of the original top-level domains,[1] with com, us, edu, gov, mil and net, established in January 1985.

191. Ans. A.

One way or single factor **authentication** is the traditional security process that requires one of the following elements before granting access to the users. There are "something user have" (including keys or token cards) Something user know (including passwords) or something user are (including

fingerprints, voiceprints or retinal scan like iris.

192. Ans. A.

A **web browser** is a software application for retrieving, presenting and traversing information resources on the World Wide Web.

193. Ans. B.

Kernel is a central component of an **operating system** which acts as an interface between the **user applications** and the **hardware**. It is also called as **the heart** of the operating system.

194. Ans. D.

Google+ is an interest-based **social network** that is owned and operated by **Google Inc.** **Facebook** is another **social network** site.

195. Ans. A.

- Random-access memory (RAM) is a form of computer data storage. A random-access memory device allows data items to be accessed (read or written) in almost the same amount of time irrespective of the physical location of data inside the memory.

- In contrast, with other direct-access data storage media such as hard disks, CD-RWs, DVD-RWs and the older drum memory, the time required to read and write data items varies significantly depending on their physical locations on the recording medium, due to mechanical limitations such as media rotation speeds and arm movement delays.

196. Ans. B.

Using Microsoft Excel's AutoFilter feature is a quick and simple way to sort through larger quantities of data. Filters support a variety of criteria with which to sort your data. To start, you'll need to generate a dataset. Then all that's left is selecting the target and activating AutoFilter by pressing the "Filter" button located on the "Data" tab, and customizing the



**IBPS RRB PO/Clerk
2021 Course** (Batch 4)

START FREE TRIAL

filter however you like. This process can be mastered in minutes, ultimately increasing your Excel efficiency.

197. Ans. C.

An **integrated development environment** (IDE) is a software application that provides comprehensive facilities to **computer programmers** for software development.

198. Ans. D.

An **integrated circuit**, commonly referred to as an **IC**, is a microscopic array of **electronic circuits** and components that has been diffused or implanted onto the surface of a single crystal, or chip, of semiconducting material such as **silicon**.

199. Ans. A.

The **expansion card** in computing is a printed circuit board that can be inserted into an **expansion slot** on a computer motherboard.

An expansion card is used to give a computer additional capabilities, such as enhanced video performance via a graphics card.

200. Ans. D.

A **wide area network** (WAN) is a telecommunications **network** that extends over a **large geographical** distance. Wide area networks are often established with leased telecommunication circuits.

In essence, this mode of telecommunication allows a business to **effectively carry** out its daily function regardless of location.



**IBPS RRB PO/Clerk
2021 Course** (Batch 4)

START FREE TRIAL