

# Home Assignment for SSC & Railway Exam 2020 Aspirants



1. Select the number that can replace the question mark (?) in the following series.

17, 20, 15, 22, 13, ?

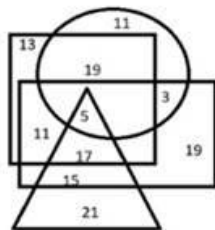
- A. 2
- B. 4
- C. 24
- D. 22

2. Four words have been given, out of which three are alike in some manner, while one is different. Select the odd word.

- A. Virtue
- B. Righteousness
- C. Probity
- D. Conduct

3. The given Venn diagram represents artists in a circus:

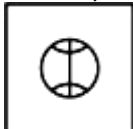
The triangle represents clowns, the circle represents acrobats, the rectangle represents males and the square represents ringmasters. The numbers given in the diagram represent the number of persons in that particular category.



How many male clowns are also ringmasters, but NOT acrobats?

- A. 17
- B. 5
- C. 11
- D. 15

4. From the given answer figures, select the one in which the question figure is hidden/embedded.

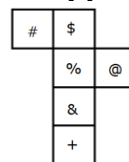


- A.
- B.
- C.
- D.

5. Select the option that depicts how the given transparent sheet of paper would appear if it is folded at the dotted line.

- 
- A.
- B.
- C.
- D.

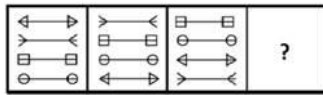
6. A cube is made by folding the given sheet. In the cube so formed, which of the following pairs of symbols will be on opposite sides?

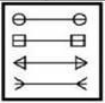
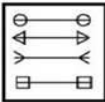
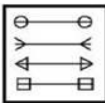
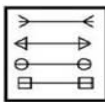


- A. @ and %
- B. & and %
- C. # and @
- D. \$ and +

**Gradeup Green Card**  
Unlimited Access to All 350+ SSC & Railways Mock Tests

7. Select the figure that can replace the question mark (?) in the following series.



- A. 
- B. 
- C. 
- D. 

8. Four words have been given, out of which three are alike in some manner and one is different. Select the odd word.

- A. Asia
- B. Africa
- C. Europe
- D. Russia

9. How many triangles are there in the given figure?



- A. 12
- B. 13
- C. 15
- D. 18

10. Consider the given statement/s to be true and decide which of the given conclusions/assumptions can definitely be drawn from the given statement.

**Statement:**

Poverty is a symptom as well as a consequence of social disorder.

**Assumptions:**

- I. Poverty is a type of social order
- II. Poverty is related to social order
- A. only I assumption is correct
- B. only assumption II is correct
- C. Both assumptions I and II are correct
- D. Neither assumption I nor II is correct

11. Read the passage and answer the questions that follow:

To the great delight of children, schools were being hurriedly closed, Children of all ages and sizes were running helter-skelter, screaming joyously, 'No school, no school. Tiger, tiger!' They were shouting and laughing and even enjoyed being scared. They seemed to welcome me. I felt like joining them, and bounded away from the restaurant door and trotted along with them, at which they gleefully cued, "The tiger is coming to eat us: let us get back to the school!"

I followed them through their school gate while they ran up and shut themselves In the school hall securely I ascended the steps of the school, saw an open door at the far end of a veranda, and walked in. It happened to be the headmaster's room. I believed, as I noticed a very dignified man jumping on his table and heaving himself up into an attic. I walked in and flung myself on the cool floor, having a partiality for cool stone floor, with my head under the large desk — which gave me the feeling of being back in the Mempi cave .. As I drowsed. I was aware of cautious steps and hushed voices all around. I was in no mood to bother about anything. All I wanted was a little moment of sleep: the daylight was dazzling. In half sleep I heard the doors of the room being shut and bolted and locked. I didn't care. I slept. While I slept a great deal of consultation was going on. I learnt about It later through my Master, who was in the crowd - the crowd which had gathered after making sure that I had been properly locked up — and was watching. The headmaster seems to have remarked some days later, "Never dreamt in my wildest mood that d have to yield my place



**Gradeup Green Card**  
Unlimited Access to All 350+ SSC & Railways Mock Tests

to a tiger." A wag had retorted. "Might be one way of maintaining better discipline among the boys."

What probably caused the greatest excitement among the children?

- A. Learning that the school would be closed
- B. Seeing a tiger getting into the school
- C. Watching the tiger run after them
- D. Knowing the tiger was coming to eat them

12. What was the tiger's reaction to the frenzy around him?

- A. He just wanted to sleep.
- B. He wanted to go back to his cave.
- C. He looked for someone to attack.
- D. He was afraid of being caught.

13. Where was the tiger just before he ran towards the school?

- A. In a cave
- B. In the forest
- C. In a restaurant
- D. At the zoo

14. Which word describes the tone of the narrative when the headmaster's reaction to the tiger's arrival is mentioned?

- A. Humorous
- B. Intimate
- C. Solemn
- D. Threatening

15. What did a mischievous person say about the headmaster?

- A. He should keep the school closed for some time.
- B. He should allow the tiger to sleep peacefully.
- C. The school would be better managed by the tiger than by him.
- D. He should leave the place and go because of his fear of the tiger.

16. **In the sentence identify the segment which contains the grammatical error.**

The both children go to the same school.

- A. The both
- B. children go

- C. to the
- D. same school

17. **In the sentence identify the segment which contains the grammatical error.**

We had a long discussion at a cup of coffee.

- A. of coffee
- B. at a cup
- C. We had
- D. a long discussion

18. **Find a word that is the synonym of- DEIFY**

- A. face
- B. worship
- C. flatter
- D. challenge

19. Find a word that is the synonym of - FATUOUS

- A. fastidious
- B. fantastic
- C. funny
- D. silly

20. In the following question, out of the given four alternatives, select the alternative which best expresses the meaning of the Idiom/Phrase.

To fall flat

- A. To flatter
- B. To fall in love with someone
- C. To have no effect
- D. To give bad news

21. Select the most appropriate meaning of the given idiom.

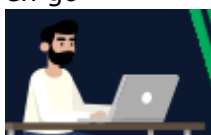
Go for a song

- A. one's favourite music
- B. happy go lucky attitude
- C. sold cheaply
- D. something which is prohibitively expensive

22. What is the simplified value of

$$\frac{\sqrt{\operatorname{cosec} A - 1}}{\sqrt{\operatorname{cosec} A + 1}} ?$$

- A. cosec A



**Gradeup Green Card**

Unlimited Access to All 350+ SSC & Railways Mock Tests

- B.  $\sec A - \tan A$
- C.  $\operatorname{cosec}^2 A$
- D.  $\tan A - \operatorname{cosec} A$

23. If  $\sin \theta = 20/29$ , then what is the value of  $\cos \theta$ ?

- A.  $29/21$
- B.  $21/29$
- C.  $21/20$
- D.  $20/29$

24. If the 10-digit number  $897359y7x2$  is divisible by 72, then what is the value of  $(3x - y)$ , for the possible greatest value of  $y$ ?

- A. 8
- B. 3
- C. 7
- D. 5

25. By selling 18 table fans for Rs.11,664 a man incurs a loss of 10%. How many fans should he sell for Rs.17,424 to earn 10% profit?

- A. 22
- B. 23
- C. 18
- D. 20

26. The price of cooking oil increased by 25%. Find by how much percentage a family must reduce its consumption in order to maintain the same budget?

- A. 30%
- B. 20%
- C. 70%
- D. 80%

27. A trader had 960 kgs of rice. He sold a part of it at 20% profit and the rest at 8% profit, so that he made a total profit of

12%. How much rice (in kgs) did he sell at 8% profit?

- A. 460
- B. 560
- C. 540
- D. 640

28. A water tap fills a tub in 'p' hours and a sink at the bottom empties it in 'q' hours. If  $p < q$  and both tap and sink are open, the tank is filled in 'r' hours, then

- A.  $\frac{1}{r} = \frac{1}{p} + \frac{1}{q}$
- B.  $\frac{1}{r} = \frac{1}{p} - \frac{1}{q}$
- C.  $r = p + q$
- D.  $r = p - q$

29. The total numbers of males and females in a town is 70,000. If the number of males is increased by 6% and that of the females is increased by 4%, then the total numbers of males and females in the town would become 73520. What is the difference between the number of males and females in the town, in the beginning?

- A. 1800
- B. 2000
- C. 1400
- D. 1500

30. Sudha saves 15% of her income. If her expenditure increases by 20% and savings increase by 60%, then by what percent has her income increased?

- A. 35
- B. 24
- C. 30
- D. 26



**Gradeup Green Card**

Unlimited Access to All 350+ SSC & Railways Mock Tests



# Gradeup Green Card

## Features:

- › 350+ Full-Length Mocks
- › 30+SSC & Railways Exams Covered
- › Tests Available in English & Hindi
- › Performance Analysis & All India Rank
- › Previous Year Question Papers in Mock Format
- › Available on Mobile & Desktop

