

IBPS क्लर्क मुख्य 2018

मेमोरी आधारित प्रश्न पत्र



Direction (1 – 8): Read the following passage carefully and answer the questions that follow. The office has extended its roots beyond the pigeonhole. The number of telecommuting workers has increased 115% in a decade, according to a new report from Global Workplace Analytics and FlexJobs that translates to 3.9 million workers, or almost 3% of the total U.S. workforce, working from home at least half the time in 2015, an increase from 1.8 million in 2005. "The brunt of remote work is dynamic; employers really need to concentrate on it and not turn a blind eye to it any longer," Sara Sutton Fell, CEO of FlexJobs. While a majority of companies are presenting telecommuting options, larger companies are the most likely to offer the option to workers. In fact, it's Uncle Sam that has the largest percentage of telecommuters at 3.1%. "The federal government has been a really nice model in terms of setting the tone on why it's a benefit."

Far-flung working has become more commonplace, specifically in the mortgage and real estate industry, human resources and recruiting, and accounting and finance. Each industry saw remote job listings flourish more than 20% last year. Employers in the Northeast, particularly in New England and Mid-Atlantic regions, are the most likely to offer flexible workplace options, the report found. "The middle class norm changed from one parent working and one staying at home to two working parents being more common and growth in single-parent families are big factors driving telecommuting to save time when and where you can," said Sutton Fell. The Great Recession also played a role.

"We saw a dramatic increase in the types of jobs that employers were hiring for that allowed telecommuting and other flexibility," said Sutton Fell.

Telecommuters tend to be a little bit older than the average employee: half are 45 or older. They're also more educated and earn more than non-telecommuters. The average yearly income for most telecommuters is \$4,000 more than non-telecommuters, according to the report. Remote work is gender neutral with 52% of work-at-home employees being female. "There is still this stigma associated with an antiquated view that telecommuting is just a work-from-home mom thing or for lower level jobs or not as dedicated workers," said Sutton Fell. "This is a very professional and viable option and it's not going anywhere." Telecommuting is most common among management positions. Professional, scientific and technical services industries have the highest percentage of telecommuters relative to their share of the workforce. Being allowed to work outside the office is good for both workers and employers. Working outside the office allow employees to have better work-life balance and improves their health and wellness, according to the report. It also saves them time and money.

Telecommuting full time brings in more than \$4,000 in savings each year thanks to reduced expenses on things like gas, parking and public transit costs and dry cleaning. By not having to go into the office every day, workers gain back the equivalent of 11 days per year. Employers also see savings from allowing flexible scheduling. Allowing a worker to telecommute half the time can save an employer more than \$11,000 a year. "It's a benefit when it comes to recruiting and retentions and offering competitive advantages with globalisation and the efficiency of being a forward-looking company," said Sutton Fell.

Source:

<https://money.cnn.com/2017/06/21>



IBPS PO & Clerk Combo
टेस्ट सीरीज़

अटेम्प्ट करें

- /pf/jobs/working-from-home/index.html?category=pf-jobs
1. Which of the following issues has been highlighted in this passage?
A. Brain Drain
B. The declining jobs in the United States
C. Work-from-home facility
D. Maternity leaves given to female employees
E. None of the above
 2. Which of the following is a major advantage of the new age telecommuting option?
A. The employees get more income due to this option.
B. There is less dependency on office and its facilities and more self-analysis.
C. One gets more leaves which can be utilised by working from home.
D. It enhances the overall well being by improving the fitness quotient.
E. Resources are conserved since less is required to manage a smaller workforce in the office.
 3. Which of the following statements from the passage defines that the fall-out of telecommuting is red-blooded?
A. The brunt of the remote work is dynamic.
B. Far-flung working has become more commonplace.
C. Being allowed to work outside the office if good for both workers and employers.
D. Employers see savings from allowing flexible scheduling.
E. The federal government has been a really nice model in terms of setting the tone on why it's a benefit.
 4. "The office has extended its roots beyond the pigeonhole." Which of the following best describes the given statement?
A. With growth, the office area is increasing.
B. The government has invested to provide funds to give lavish working spaces to individuals.
C. The office is just not confined to the four-walled rigid infrastructure but has expanded its cover by including remote working options.
D. The remote working options has helped the employees deal with in-office disturbances.
E. None of these
 5. According to Sutton Fell, which of the following gave way to the new working conditions in the United States?
i. She regarded the Great Recession as the major precursor for the new and flexible job listings.
ii. The changing technology which pushed for the remote working.
iii. The change from single working parent to both of the people working in a household for better future prospects and hence flexibility given to them.
iv. People are leading a sedentary lifestyle and hence are able to give less time in the office leading to offices rolling out telecommuting options.
v. Women needed to be treated equally hence in order to give them equal say in the workplace, telecommute was provided.
A. Only I B. Both iv and v
C. Only iii D. Both i and iii
E. All of the above
 6. Which common benefit does remote working bring to both the employees and the employers?
A. Lesser taxation- Due to a new rule being passed stating people who stay at home will be charged less taxes.
B. More savings- Reduced amount spent on travelling by employees while employers reduce their expenses on workers leading to more savings.
C. More comfort- Both the employees and employers have an ease of comfort. Employers don't have to deal with office laziness by workers and employees can rest and work at the same time.
D. More expenditure- The employees earn more and spend more while employers get more work done in less salaries.
E. Sustainable development- The less

- use of transportation, electricity in offices help judicious use of resources
7. "Telecommuting is just a work-from-home mom thing or for lower level jobs or not as dedicated workers". What is the subject's perspective regarding the statement?
- A. The subject calls the statement in question by putting forth the perspective that telecommuting is a gender-neutral snap and will reap fruits to the entire workforce.
B. The subject backs the statement and calls telecommuting implausible for the individual as well as the employer.
C. The subject keeps up with the statement with the perspective that telecommuting would result in lesser productivity as not everyone can be relied upon.
D. The subject sticks by the statement and states that the efficiency of the individuals cannot be determined by their gender and that everyone should be treated equally.
E. None of these

Direction: In the following question, five statements have been given. Identify the pair of statements which are grammatically correct and also carry the same meaning.

8. 1) As consumerism, especially at century's end, becomes an increased individualistic and private affair, we risk losing key virtues that stabilize and promote social life.
2) Consumerism is kindled, only when people, through the mediums of advertising and marketing, come to mythically believe they have certain "needs" that can only be satisfied through consumption.
3) Consumerists, as a character-cultivating way of life, encourage the least attractive human traits—avarice, aggression, and self-centeredness.
4) We all fall prey to consumerism, and it is especially important for parents to have been teaching their children to discern the real messages behind airbrushed ads and images.

5) Consumerism comes into existence when various marketing strategies contribute to the creation of artificial wants among consumers.

- A. 1 and 2 B. 2 and 3
C. 4 and 5 D. 2 and 5
E. 3 and 4

Direction: In the following question, five statements have been given. Identify the pair of statements which are grammatically correct and also carry the same meaning.

9. 1) Each religion follows its own calendar for deciding the day on which the festival is to be celebrated, for example, the Hindu festivals is determined by the lunar Hindu calendar.
2) Diwali, one of the much prominent Hindu festivals of India, is celebrated with a lot of pomp and show.
3) Among all the countries of the world, India is the one with a large geographical area, supporting people from all communities and religions of the world and we celebrate festivals of each religion with equal zeal and vigour, making festivals a frequent occurrence in the Indian lives.
4) India could well be called the land of festivals and the amalgamation of different cultures, languages and religions ensures that there is a festival being celebrated in some part of India almost every week.
5) India is still a predominantly rural nation and much of its festivals are characterized by the welcoming of seasons.

- A. 1 and 2 B. 2 and 3
C. 4 and 5 D. 5 and 1
E. 3 and 4

Direction: In the following question, five statements have been given. Identify the pair of statements which are grammatically correct and also carry the same meaning.

10. 1) Competitive advertisement is an aggressive form of marketing and is quiet different for creative advertisement, whose soul purpose is entertainment.

2) While creative advertisement might be entertaining, comparative advertisement, one of the aggressive forms of marketing, is a whole new ball game altogether.

3) Competitive advertisement is an aggressive form of marketing and is quite different from creative advertisement, whose sole purpose is entertainment.

4) While creative advertisement might be entertaining, comparative advertisement, one of the aggressive form of marketing, is a whole new ball game altogether.

5) Even though creative advertisement might be entertaining, comparative advertisement, one of the aggressive forms of marketing, is a whole new ball game altogether.

- A. 1 and 2 B. 2 and 3
C. 4 and 5 D. 2 and 5
E. 3 and 4

Direction: In the following question, five statements have been given. Identify the pair of statements which are grammatically correct and also carry the same meaning.

11. 1) Little do people know, just like the rest of the country that there are hundreds in the North Eastern states of our country who have been displaced from their homes due to severe floods.
2) Just like the rest of the country that there are hundreds in the North Eastern states of our country who have been displaced from their homes due to severe floods and very less is known about them.
3) A very little is known about the hundreds of people in the North Eastern states of our country who have been rendered homeless due to severe floods.
4) Very little is known about the hundreds of people in the North Eastern states of our country who have been rendered homeless due to severe floods.
5) Misplaced from their homes due to severe floods, little is known that just like the rest of the country, there are

hundreds in the North Eastern states of our country who have been misplaced.

- A. 1 and 4 B. 2 and 3
C. 4 and 5 D. 2 and 5
E. 3 and 4

Direction: In the following question, a word is given that is followed by three statements. All these three statements carry the given word. Identify the sentence(s) in which the word fits to make them grammatically correct and meaningful.

12. Hamper

I. The Centre's move to direct oil marketing companies to lower auto fuel price **hampers** the confidence of oil companies in investments made in India.

II. Metro Railway services were **hampered** for 15 minutes on Monday afternoon.

III. High street retailers, Marks & Spencer and John Lewis & Partners, have also released their own **hampers** which are far more affordable than the luxury offerings.

- A. Only I B. Both I and II
C. Only III D. Both II and III
E. All I, II and III

Direction: In the following question, a word is given followed by three statements. All these three statements carry the given word which has been highlighted. Identify the sentence(s) in which the word fits contextually to convey a logical meaning.

13. Century

1) Making a **century** and propelling his team to a win was a fitting reply from the captain.

2) Following a **century**-old tradition the husband decided to visit the hilltop temple with his wife.

3) The **century** was filled with a great diversity of animals.

- A. Only 1 B. Only 2
C. Both 1 and 2 D. Both 2 and 3
E. All

Direction: In the following question, a word is given followed by three statements. All these three statements carry the given word which has been highlighted. Identify the sentence(s) in which the word fits contextually to convey a logical meaning.

14. **Date**

- 1) Her **date** with her classmate had been uneventful and he hadn't asked her out since.
 - 2) The poor kid didn't even have a real birthday, only an arbitrarily chosen **date**.
 - 3) The shirt may be pricey but it will never **date**.
- A. Only 1 B. Only 3
C. Both 1 and 2 D. Both 2 and 3
E. All 1, 2 and 3

Direction: In the given question, four words are given of which two are most nearly the same or opposite in meaning. Find the two words and indicate your answer by marking the option which represents the correct combination.

15. A) Audacity
B) Annoy
C) Assort
D) Amuse

- A. A-B B. B-D
C. A-D D. B-C
E. A-C

Direction: Four words, out of which two are most nearly the same or opposite in meaning, are given. Find the pair and indicate the answer by marking the option that represents the correct combination.

16. A. Blame
B. Incarcerator
C. Blimey
D. Inculcate

- A. A - B B. B - D
C. A - D D. B - C
E. A - C

Direction: Four words, out of which two are most nearly the same or opposite in meaning, are given. Find the pair and indicate the answer by

marking the option that represents the correct combination.

17. A) Permit
B) Plough
C) Bar
D) Beacon

- A. A-B B. B-D
C. A-D D. B-C
E. A-C

Direction: In the given question, four words are given of which two are most nearly the same or opposite in meaning. Find the two words and indicate your answer by marking the option which represents the correct combination.

18. A) Crave
B) Abjure
C) Exceed
D) Crass

- A. A-B B. A-C
C. B-C D. A-D
E. B-D

Direction: A sentence with two blanks is given, each blank indicating that something has been omitted. Choose the words that best fit the meaning of the sentence as a whole.

19. In the _____ of its journey of 139 years, this newspaper has remained contemporary yet classic by effecting periodic design changes and taking a lead to _____ new technology without compromising its core values that are intrinsically wedded to the cardinal principles of journalism.

- A. beauty, follow
B. totality, adapting
C. era, grab
D. entirety, embrace
E. whole, clasp

Direction: A sentence with two blanks is given, each blank indicating that something has been omitted. Choose the words that best fit the meaning of the sentence as a whole.

20. In the early 2000s, dozens of the world's premier experts on sports-related concussions started meeting to _____ studies about concussions, with plans to issue a consensus set of guidelines on how

best to _____ and deal with the condition.

- A. review, identify
- B. ponder, debate
- C. brood, establish
- D. concentrate, organize
- E. grasp, distract

Direction: A sentence with two blanks is given, each blank indicating that something has been omitted. Choose the words that best fit the meaning of the sentence as a whole.

21. PM Modi's hectic external engagements were to _____ the notion that a former Chief Minister with little diplomatic experience could not make it to the high table as well as counter a campaign by pro-Congress intellectuals to _____ him a visa to travel to the West because of his so-called role in Gujarat riots.
- A. Dispel, deny
 - B. Scattered, approve
 - C. Join, deny
 - D. Dismiss, agree
 - E. Congratulate, grant

Direction: A sentence with two blanks is given, each blank indicating that something has been omitted. Choose the words that best fit the meaning of the sentence as a whole.

22. If a startup founder could peer 8 years into the future and see a company that has become the symbol for _____ culture, one that has raised over \$8 billion on a valuation of \$67 billion, that has a worldwide presence in hundreds of cities, millions of app downloads, 12,000 full time employees and thousands more working for your service, _____ are they would start it.
- A. Disruptive, Chances
 - B. Vibrant, Excuses
 - C. Extinct, Possibilities
 - D. Big, Probabilities
 - E. None of the above

Direction: A sentence with two blanks is given, each blank indicating

that something has been omitted. Choose the words that best fit the meaning of the sentence as a whole.

23. Brokerage houses have given a mixed response to the consumer goods sector, with most saying GST taxes are neutral to positive, _____ that since many companies enjoy excise duty exemption, clarity is _____ on these in the excise-free zones under GST.
- A. Saying, Expected
 - B. Speaking, Demanded
 - C. Separating, Desired
 - D. Adding, Awaited
 - E. Separating, Awaited

Direction: The given question has a statement with two highlighted words/ phrases. Choose the most appropriate option from the given alternatives which can help replace the highlighted words to make the statement grammatically and logically correct. If the given sentence is correct as it is, mark 'No correction required' as the answer.

24. The remuneration for the services offered by the veterans is **affectionate** when compared with the monetary **aspirations** in other job sectors.
- A. affiliate, probations
 - B. disproportionate, compensations
 - C. variable, policies
 - D. irrelevant, relevance
 - E. No correction required

Direction: The given question has a statement with two highlighted words/ phrases. Choose the most appropriate option from the given alternatives which can help replace the highlighted words to make the statement grammatically and logically correct. If the given sentence is correct as it is, mark 'no correction required' as the answer.

25. Recordings of the financial data made it clear that the **recurrence** in the economy has very little to do with the **hopes** taken by the financial experts.
- A. heightening, proposals
 - B. breakout, offers

- C. flattening, drapes
- D. improvement, measures
- E. No correction required

Direction: The given question has a statement with two highlighted words/ phrases. Choose the most appropriate option from the given alternatives which can help replace the highlighted words to make the statement grammatically and logically correct. If the given sentence is correct as it is, mark 'no correction required' as the answer.

26. The report from the governing council clearly **related** that the minister was involved in undue **advantage** of his kin throughout his tenure in the office.
- A. transpired, elation
 - B. produced, aspects
 - C. stated, favouring
 - D. proclaimed, presentation
 - E. No correction required

Direction: The given question has a statement with two highlighted words/ phrases. Choose the most appropriate option from the given alternatives which can help replace the highlighted words to make the statement grammatically and logically correct. If the given sentence is correct as it is, mark 'no correction required' as the answer.

27. Recovering from the drought was very **difficult** in itself, but when the bankers started to act **stringently** for loan recovery, the farmers were distraught.
- A. inspiring, reluctantly
 - B. disgusting, laxly
 - C. important, proportionately
 - D. easy, strictly
 - E. No correction required

Direction: Five statements labelled A, B, C, 1 and 2 are given below. Among them, statements A, B and C are in the correct order. Identify the positions of 1 and 2 so as to make a logically coherent paragraph.

28. A) It is disconcerting to see that, in recent times, serious questions are

being raised about India's secularism.

B) It is for the first time since Independence that the Hindu Rashtra ideology is being talked about so openly, defiantly and persistently.

C) The Supreme Court itself has expressed apprehensions in this regard

1. India's survival as a multireligious, multilingual, multiracial, multicultural society will depend on how successful it is in working its secularism.

2. It opines that the country with the legacy of a successful secular fabric, faces the perils of losing one of her much-cherished credentials.

- A. 21ABC
- B. 12ABC
- C. 2ABC1
- D. ABC12
- E. 1ABC2

Direction: Five statements labelled A, B, C, 1 and 2 are given below. Among them, statements A, B and C are in the correct order. Identify the positions of 1 and 2 so as to make a logically coherent paragraph.

29. A) This has led to a growth of regionalism in the country where every region thinks it in terms of the number of regional political parties in different parts of the country.
- B) These regional parties have a special appeal for the peoples of their areas.

C) They are thus able to send a sizeable chunk of their representatives to the Lok Sabha and the Rajya Sabha.

1) India is a land full of diversities and the people in different states of the country have their own ways of life, their languages and political views.

2) Every state contributes a limited number of representatives to the Lok Sabha.

- A. 21ABC
- B. 12ABC
- C. 2ABC1
- D. ABC12
- E. 1ABC2

Direction: Five statements labelled A, B, C, 1 and 2 are given below. Among them, statements A, B and C

are in the correct order. Identify the positions of 1 and 2 so as to make a logically coherent paragraph.

30. A) An area drained by a river and its tributaries is called a drainage basin.
B) The drainage system is related to a number of factors like slope of land, geological structure, amount and velocity of water.
C) A river through its drainage system performs several tasks.
1) The drainage system refers to the system of flow of surface water mainly through rivers.
2) These are excess water removal from a particular area, transportation of sediments from one place to other, providing natural source for irrigation and maintaining the water table of a region.
- A. ABC21 B. 12ABC
C. 2ABC1 D. ABC12
E. 1ABC2

Direction: Five statements labelled A, B, C, 1 and 2 are given below. Among them, statements A, B and C are in the correct order. Identify the positions of 1 and 2 so as to make a logically coherent paragraph.

31. (A) The Swedish Academy, which awards the Nobel prize for literature, is meant to be a source of stability: Members are appointed for life.
(B) But it's been melting down rather spectacularly and publicly over the last year.
(C) Accusations of sexual harassment by more than a dozen women against photographer Jean-Claude Arnault, the husband of academy member Katarina Frostenson, have toppled the institution and revealed it to be riddled with cronyism and abuses of power.
(1) It's a fact so embarrassing that the Nobel prize in literature will not even be given out this year as the Academy attempts to salvage its prestige.
(2) Of the 18 chairs in the academy, there are only 10 remaining with active members—in large part

because of departures in the wake of the scandal.

- A. 21ABC B. 1ABC2
C. 2ABC1 D. ABC12
E. ABC21

Direction : Select the phrase / connector from the given three options which can be used to form a single sentence from the two sentences given below, implying the same meaning as expressed in the statement sentences.

32. There is a United Nations meeting in Geneva next week on autonomous weapons. More than 20 countries have already called for a total ban on killer robots.
I. The boycott comes ahead of
II. Even though the use of AI in militaries around the world has sparked fears,
III. While support builds for an outright ban on autonomous weapons,
Pick out the option which when used to start a sentence combines both the above sentences in one.
- A. Both I and II
B. Both I and III
C. Both II and III
D. Only II
E. None of these

Direction: Select the phrase/connector from the given three options which can be used to form a single sentence from the two sentences given below, implying the same meaning as expressed in the statement sentences.

33. You may already know the professional teeth whitening cost can be high — much more expensive than at-home alternatives. In-office teeth whitening is one of the safest and most effective whitening methods.
I. If you've considered whitening your teeth,
II. Teeth whitening doesn't have to be expensive while
III. If you're looking for an alternative to professional bleaching in a dental office as

Pick out the option which when used to start a sentence combines both the above sentences in one.

- A. Only I B. Only II
C. Only III D. All of the above
E. None of the above

Direction : Select the phrase / connector from the given three options which can be used to form a single sentence from the two sentences given below, implying the same meaning as expressed in the statement sentences.

34. A proposed resolution of impeachment of the Chief Justice of India is a matter of grave concern. It brings to the fore issues that directly impinge on the independence of the judiciary.

I. The euphoria in some circles over II. There must be some safeguards before

III. Since a fearless judge is the bedrock of an independent judiciary, Pick out the option which when used to start a sentence combines both the above sentences in one.

- A. Both I and II
B. Both II and III
C. Both I and III
D. Only I
E. All of the above

Direction : Select the phrase / connector from the given three options which can be used to form a single sentence from the two sentences given below, implying the same meaning as expressed in the statement sentences.

35. The size of contingency funds at the disposal of the IMF to lend to countries in need of help, as well as the power of individual countries to influence lending decisions and tap into the funds themselves is determined by quotas. Though developing countries hold less than half the overall quota at the moment, with their rapidly increasing economic heft they have demanded a greater share.

I. Quotas determine
II. Economy determine
III. Development of a country determine

- A. Only I B. Only II
C. Only III D. Both II and III
E. Both I and II

Direction (36 – 45) : Read the given passage carefully and answer the questions that follow. The need for more effective information security practices is increasingly evident with each security breach reported in the media. When adopting new technologies like cloud computing, virtualization, or IT outsourcing, enterprises are facing imminent security threats and must adjust their security processes, policies, and architectures accordingly. Among the many options available to help customers to achieve this goal, organizations should consider the value of ethical hacking services, which are rapidly gaining attention as an essential security practice that should be performed on a regular basis. "The elevated threat landscape therefore, urgently dictates the need for a comprehensive, real-world assessment of an organization's security posture. This assessment is a first vital step to enact effective security policies, procedures, and infrastructure that will prevent or mitigate the effects of a data breach." Ethical hacking offers an objective analysis of an organization's information security posture for organizations of any level of security expertise. The ethical hacking organization has no knowledge of the company's systems other than what they can gather. Hackers must scan for weaknesses, test entry points, priorities targets, and develop a strategy that best leverages their resources. The objectiveness of this kind of security assessment has a direct impact on the value of the whole evaluation. However, businesses still remain skeptical

about the risk inherent with inviting a third-party to attempt to access sensitive systems and resources. To reduce this fear, businesses should hire only ethical hacking companies that implement practices to ensure privacy and confidentiality. They should also be accredited by international trade organizations such as the EC-Council and ISC. Ethical hacking and ethical hacker are terms used to describe hacking performed by a company or individual to help identify potential threats on a computer or network. An ethical hacker attempts to bypass system security and search for any weak points that could be exploited by malicious hackers. This information is then used by the organization to improve the system security, in an effort to minimize or eliminate any potential attacks. The term "ethical hacker" has received criticism at times from people who say that there is no such thing as an "ethical" hacker. Hacking is hacking, no matter how you look at it and those who do the hacking are commonly referred to as computer criminals or cyber criminals. However, the work that ethical hackers do for organizations has helped improve system security and can be said to be quite effective and successful. Individuals interested in becoming an ethical hacker can work towards a certification to become a Certified Ethical Hacker, or CEH. In a search for ways to reduce the fear and worry of being hacked, organizations have come to the realization that an effective way to evaluate security threats is to have independent security experts attempt to hack into their computer systems. In the case of computer security, these tiger teams or ethical hackers would use the same tools and techniques as an attacker, but rather than damage the system or steal information, they would evaluate the system security and report the vulnerabilities they found and

provide instructions for how to remedy them. From the early days of computers, ethical hacking has been used as an evaluation of system security. Many early ethical hacks were conducted by the United States Military to carry out security evaluations on their operating systems to determine whether they should employ a two-level (secret/top secret) classification system. However, with the growth of computing and networking in the early 1990's, computer and network vulnerability studies began to appear outside of the military organization. In December of 1993, two computer security researchers, Dan Farmer from Elemental Security and Wietse Venema from IBM, suggested that the techniques used by hackers can be used to assess the security of an information system. They wrote a report that was shared publicly on the Internet which described how they were able to gather enough information to compromise security and they provided several examples of how this information could be gathered and exploited to gain control of a system, and how such an attack could be prevented. An ethical hacker should set simple goals, such as finding unauthorized wireless access points or obtaining information from a wired network system. In any case, the goals should be articulate and well communicated. Written permission is required and should state that an ethical hacker is authorized to perform a test according to the plan. It should also say that the organization will provide legal and organizational support in case criminally charges or lawsuits arise. This is conditional on staying within the bounds of the approved plan. An ethical hacker is bound to confidentiality and non-disclosure of information they may uncover. Ethical hackers must also be compliant with their organization's governance and local laws. An ethical hack must not be performed when



IBPS PO & Clerk Combo
टेस्ट सीरीज़

अटेम्प्ट करें

the company policy or the law for that matter, explicitly forbids it.
Source:

<https://www.varanoid.com/the-importance-of-ethical-hacking/>
<https://crescentke.com/2017/02/22/what-is-ethical-hacking-and-is-it-important/>

36. What is the main idea of the passage?
- Cyber threats are increasing with time.
 - Technology needs to be controlled in certain areas to provide more security.
 - Growing importance and methods of ethical hacking
 - Laws related to ethical hacking
 - Cyber crimes and the best way to handle them
37. What is the most ideal way of working for an ethical hacker?
- Thinking like a malicious hacker and breaking into systems.
 - An ideal ethical hacker must regularly check the security of an organization.
 - An ideal ethical hacker must give proper importance to privacy and confidentiality.
 - An ethical hacker must always maintain the border line that one should not cross and this is what distinguishes an ethical hacker from a hacker.
 - Ethical hackers must work only when organizations have asked them to help them out.
38. Which of the following can be inferred to be a major reason of increasing the problem of hacking?
- Lack of ethics among people
 - Increased use and accessibility of technology
 - Lack of proper laws in the country
 - Excessive unauthorized access of some web pages
 - Lack of planning and privacy among people
39. Which of the following is the most important step in order to ensure that ethical hackers are not being a problem for the organization?
- Certification to specialized people.
 - Security of the organization should

be kept the topmost priority.
C. Computing and networking should be enhanced.

D. Completely following the laws.

E. Authorized access by ethical hackers.

40. What is the major difference between hackers and ethical hackers?
- Hackers are not hired by organizations whereas the ethical hackers are hired by organizations for better security.
 - Hackers are the unprofessional, uncertified people whereas the ethical hackers are the professional certified ones.
 - Hackers have some malicious purpose whereas the ethical hackers report the weaknesses and vulnerabilities to the organization on finding any.
 - Hackers use specific techniques whereas the ethical hackers use a common set of techniques that had been popular for some time.
 - Hackers do not work for any specific organization whereas the ethical ones work for specific organizations.

निर्देश: नीचे दिए गए प्रत्येक प्रश्न के बाद दो कथन I और II दिए गए हैं। आपको यह निर्धारित करना है कि प्रश्न का उत्तर देने के लिए कथन में दी गई जानकारी पर्याप्त है या नहीं। आपको सर्वोत्तम संभावित उत्तर चुनने के लिए दी गई जानकारी और अपने गणित के ज्ञान का उपयोग करना है।

41. निर्धारित करें 'Z' एक धनात्मक पूर्णांक है या नहीं?

i. $Z^7 > Z$

ii. $Z^8 > Z$

A. मैं दी गई जानकारी प्रश्न का उत्तर देने के लिए अकेले पर्याप्त है, जबकि कथन II में दी गई जानकारी प्रश्न का उत्तर देने के लिए अकेले पर्याप्त नहीं है।

B. मैं दी गई जानकारी प्रश्न का उत्तर देने के लिए अकेले पर्याप्त है, जबकि कथन I में दी

- गई जानकारी प्रश्न का उत्तर देने के लिए अकेले पर्याप्त नहीं है।
 C. या तो कथन I या कथन II में दी गई जानकारी अकेले प्रश्न का उत्तर देने के लिए पर्याप्त है।
 D. दोनों कथनों I और II में दी गई जानकारी प्रश्न का उत्तर देने के लिए आवश्यक है।
 E. दोनों कथनों I और II में दी गई जानकारी साथ में प्रश्न का उत्तर देने के लिए पर्याप्त नहीं है।
42. $4\frac{1}{a} + 4\frac{1}{b} = ?$
 i. a और b के व्युत्क्रम का योगफल $6/5$ के बराबर है।
 ii. 'a' और 'b' का गुणनफल 5 के बराबर है।
 A. में दी गई जानकारी प्रश्न का उत्तर देने के लिए अकेले पर्याप्त है, जबकि कथन II में दी गई जानकारी प्रश्न का उत्तर देने के लिए अकेले पर्याप्त नहीं है।
 B. में दी गई जानकारी प्रश्न का उत्तर देने के लिए अकेले पर्याप्त है, जबकि कथन I में दी गई जानकारी प्रश्न का उत्तर देने के लिए अकेले पर्याप्त नहीं है।
 C. या तो कथन I या कथन II में दी गई जानकारी अकेले प्रश्न का उत्तर देने के लिए पर्याप्त है।
 D. दोनों कथनों I और II में दी गई जानकारी प्रश्न का उत्तर देने के लिए आवश्यक है।
 E. दोनों कथनों I और II में दी गई जानकारी साथ में प्रश्न का उत्तर देने के लिए पर्याप्त नहीं है।
43. किसी कार्य को समाप्त करने में 14 पुरुषों द्वारा लिए गए दिनों की संख्या ज्ञात करें?
 i. यदि उसी कार्य को 18 महिलाएं 24 दिनों में करती हों।
 ii. यदि उसी कार्य को 28 बच्चे 56 दिनों में करते हों।
 A. में दी गई जानकारी प्रश्न का उत्तर देने के लिए अकेले पर्याप्त है, जबकि कथन II में दी

- गई जानकारी प्रश्न का उत्तर देने के लिए अकेले पर्याप्त नहीं है।
 B. में दी गई जानकारी प्रश्न का उत्तर देने के लिए अकेले पर्याप्त है, जबकि कथन I में दी गई जानकारी प्रश्न का उत्तर देने के लिए अकेले पर्याप्त नहीं है।
 C. या तो कथन I या कथन II में दी गई जानकारी अकेले प्रश्न का उत्तर देने के लिए पर्याप्त है।
 D. दोनों कथनों I और II में दी गई जानकारी प्रश्न का उत्तर देने के लिए आवश्यक है।
 E. दोनों कथनों I और II में दी गई जानकारी साथ में प्रश्न का उत्तर देने के लिए पर्याप्त नहीं है।
44. यदि 25 गेंदों वाले एक कलश से एक गेंद यदृच्छा निकाली जाए, तो लाल गेंद निकालने की प्रायिकता ज्ञात करें,
 i. कलश में 10 पीली और 8 हरी गेंद हैं।
 ii. कलश में सभी रंगीन गेंद हैं।
 A. में दी गई जानकारी प्रश्न का उत्तर देने के लिए अकेले पर्याप्त है, जबकि कथन II में दी गई जानकारी प्रश्न का उत्तर देने के लिए अकेले पर्याप्त नहीं है।
 B. में दी गई जानकारी प्रश्न का उत्तर देने के लिए अकेले पर्याप्त है, जबकि कथन I में दी गई जानकारी प्रश्न का उत्तर देने के लिए अकेले पर्याप्त नहीं है।
 C. या तो कथन I या कथन II में दी गई जानकारी अकेले प्रश्न का उत्तर देने के लिए पर्याप्त है।
 D. दोनों कथनों I और II में दी गई जानकारी प्रश्न का उत्तर देने के लिए आवश्यक है।
 E. दोनों कथनों I और II में दी गई जानकारी साथ में प्रश्न का उत्तर देने के लिए पर्याप्त नहीं है।
45. क्या 'W' एक पूर्णांक है?
 i. $3W$ एक विषम संख्या है।
 ii. $2W$ एक सम संख्या है।

- A. में दी गई जानकारी प्रश्न का उत्तर देने के लिए अकेले पर्याप्त है, जबकि कथन II में दी गई जानकारी प्रश्न का उत्तर देने के लिए अकेले पर्याप्त नहीं है।
- B. में दी गई जानकारी प्रश्न का उत्तर देने के लिए अकेले पर्याप्त है, जबकि कथन I में दी गई जानकारी प्रश्न का उत्तर देने के लिए अकेले पर्याप्त नहीं है।
- C. या तो कथन I या कथन II में दी गई जानकारी अकेले प्रश्न का उत्तर देने के लिए पर्याप्त है।
- D. दोनों कथनों I और II में दी गई जानकारी प्रश्न का उत्तर देने के लिए आवश्यक है।
- E. दोनों कथनों I और II में दी गई जानकारी साथ में प्रश्न का उत्तर देने के लिए पर्याप्त नहीं

निर्देश : नीचे दोनों कॉलेजों में लड़कों और लड़कियों से संबंधित जानकारी दी गई है- सेंट जेवियर कॉलेज और विजया कॉलेज में लड़कियों की औसत संख्या 210 है और दोनों कॉलेजों में लड़कों की कुल संख्या 810 है। सेंट जेवियर कॉलेज में और विजया कॉलेज में क्रमशः लड़कियों की संख्या लड़कों की संख्या की $\frac{2}{3}$ और लड़कियों की संख्या लड़कों की संख्या की $\frac{2}{5}$ है।

46. सेंट जेवियर कॉलेज में लड़कियों की संख्या के संदर्भ में विजया कॉलेज में लड़कियों की संख्या का प्रतिशत ज्ञात करें?
- A. 50% B. 62.5%
- C. 75% D. 66 23%
- E. 87.5%

निर्देश: नीचे दोनों कॉलेजों में लड़कों और लड़कियों से संबंधित जानकारी दी गई है- सेंट जेवियर कॉलेज और विजया कॉलेज में लड़कियों की औसत संख्या 210 है और दोनों कॉलेजों में लड़कों की कुल संख्या 810 है। सेंट जेवियर कॉलेज में और विजया कॉलेज में

क्रमशः लड़कियों की संख्या लड़कों की संख्या की $\frac{2}{3}$ और लड़कियों की संख्या लड़कों की संख्या की $\frac{2}{5}$ है।

47. 'X' कॉलेज में लड़कों की कुल संख्या ज्ञात करें यदि सेंट जेवियर कॉलेज और X कॉलेज में लड़कियों की औसत संख्या 320 हो। और इसके अलावा कॉलेज 'X' में विद्यार्थियों की कुल संख्या सेंट जेवियर कॉलेज में विद्यार्थियों की कुल संख्या से 25% अधिक है।
- A. 450 B. 400
- C. 375 D. 350
- E. 300
48. विजया कॉलेज में विद्यार्थियों की कुल संख्या और सेंट जेवियर कॉलेज में विद्यार्थियों की कुल संख्या के बीच अंतर ज्ञात करें?
- A. 15 B. 20
- C. 25 D. 30
- E. 35
49. विजया कॉलेज में लड़कों की संख्या और 'Y' कॉलेज में लड़कों की संख्या के बीच अनुपात 9:13 है और 'Y' कॉलेज में लड़कियों की संख्या विजया कॉलेज में लड़कियों की संख्या से 20% कम है। 'Y' कॉलेज में विद्यार्थियों की कुल संख्या ज्ञात करें?
- A. 784 B. 794
- C. 789 D. 798
- E. 778

निर्देश: नीचे दोनों कॉलेजों में लड़कों और लड़कियों से संबंधित जानकारी दी गई है- सेंट जेवियर कॉलेज और विजया कॉलेज में लड़कियों की औसत संख्या 210 है और दोनों कॉलेजों में लड़कों की कुल संख्या 810 है। सेंट जेवियर कॉलेज में और विजया कॉलेज में क्रमशः लड़कियों की संख्या लड़कों की संख्या की $\frac{2}{3}$ और लड़कियों की संख्या लड़कों की संख्या की $\frac{2}{5}$ है।

50. विजया कॉलेज में लड़कों की संख्या सेंट जेवियर कॉलेज में लड़कों की संख्या से कितने प्रतिशत अधिक है?
- A. 32.5% B. 20%
C. 50% D. 37.5%
E. 25%
51. 15 पुरुष किसी कार्य को 'X' दिनों में पूरा कर सकते हैं। 21 महिलाएं उसी कार्य को 'X - 4' दिनों में पूरा कर सकती हैं। 35 पुरुष उसी कार्य को 'Y' दिनों में पूरा कर सकते हैं और 63 महिलाएं उसी कार्य को 'Y-4' दिनों में पूरा कर सकती हैं। 'X' का मान ज्ञात करें?
- A. 14 B. 18
C. 28 D. 24
E. 32
52. वस्तु A का क्रय मूल्य वस्तु B के क्रय मूल्य का दो गुना है और दुकानदार दोनों वस्तु का मार्क अप मूल्य क्रय मूल्य से 20% अधिक अंकित करता है। यदि बिक्री के समय दुकानदार 9 रुपये की छूट देता हो और कुल पर 17% लाभ प्राप्त करता हो तो वस्तु A का क्रय मूल्य ज्ञात करें।
- A. 100 B. 200
C. 150 D. 250
E. 50
53. 4 लड़कियों और 5 लड़कों की सहायता से 5 व्यक्तियों की एक कमेटी का गठन किया जाना है। कमेटी में लड़कों की संख्या लड़कियों की संख्या से कम होने की प्रायिकता ज्ञात करें।
- A. $\frac{3}{14}$ B. $\frac{7}{13}$
C. $\frac{3}{5}$ D. $\frac{5}{14}$
E. इनमें से कोई नहीं
54. एक रेलगाड़ी को 25 किमी/घंटे की चाल से एक प्लेटफॉर्म पार करने में 18 सेकेंड लगते हैं और इसे विपरीत दिशा में 5 किमी/घंटे की चाल से जाते एक आदमी को पार करने में 12 सेकेंड लगते हैं। रेलगाड़ी की लंबाई प्लेटफॉर्म की लंबाई से कितनी अधिक है? (मीटर में)

- A. 50 B. 75
C. 100 D. 125
E. 150
55. सतीश, भव्या और अभिषेक ने क्रमशः 15000 रुपये, 18000 रुपये और 24000 रुपये के साथ एक साझेदारी में प्रवेश किया। अभिषेक उनके साथ 'x' महीने बाद शामिल हुआ और भव्या वर्ष की समाप्ति के 'x' महीने पहले चली गई। यदि वे वर्ष के अंत में लाभ साझा करते हों और वे लाभ क्रमशः 10:9:12 के अनुपात में साझा करते हों तो 'x' का मान ज्ञात करें?
- A. 4 महीने B. 6 महीने
C. 9 महीने D. 3 महीने
E. 8 महीने
56. साक्षी की वर्तमान आयु उसके विवाह के समय की आयु की $\frac{5}{4}$ गुना है और उसके पुत्र की आयु उसकी आयु की $\frac{1}{5}$ है। साक्षी का विवाह 6 वर्ष पहले हुआ था। 10 वर्ष बाद साक्षी की आयु का उसके पुत्र की आयु से अनुपात ज्ञात करें?
- A. 3: 1 B. 5: 2
C. 5: 3 D. 3: 2
E. 4: 1
57. राम ने योजना 'A' में 18000 रुपये निवेश किए जो 15% वार्षिक साधारण ब्याज प्रदान करती है और योजना 'B' में 15000 रुपये निवेश किए जो 18% वार्षिक चक्रवृद्धि ब्याज प्रदान करती है। इन दोनों योजनाओं से दो वर्ष बाद प्राप्त होने वाले ब्याज के बीच अंतर ज्ञात करें?
- A. 468 B. 396
C. 456 D. 486
E. 482
58. एक तांबे और एल्युमीनियम की मिश्र धातु में 40% तांबा है। तांबे और जस्ते की एक अन्य मिश्र धातु में तांबे और जस्ते का अनुपात 2:7 है। इन दोनों मिश्र धातुओं को 5:3 में मिश्रित किया गया। अंतिम मिश्र धातु में एल्युमीनियम की मात्रा तांबे की मात्रा से कितने प्रतिशत अधिक/कम है?

- A. $11\frac{1}{9}\%$ B. $11\frac{1}{3}\%$
 C. 12% D. 13%
 E. 12.5%
59. 5 किमी/घंटे और 10 किमी/घंटे की रफ्तार से यात्रा कर रही दो नाव एक दूसरे की ओर बढ़ना शुरू करती हैं। वे अभी एक दूसरे से 20 किमी की दूरी पर हैं। टकराने से एक मिनट पहले वे एक दूसरे से कितनी दूर (किमी में) होंगी?
 A. $\frac{1}{12}$ B. $\frac{1}{6}$
 C. $\frac{1}{4}$ D. $\frac{1}{3}$
 E. इनमें से कोई नहीं
60. एक बेलन के संपूर्ण पृष्ठीय क्षेत्रफल (वर्ग मीटर में) ज्ञात करें, यदि बेलन के आयतन और पृष्ठीय क्षेत्रफल क्रमशः 616 घन मीटर और 352 वर्ग मीटर हो।
 A. 429 B. 419
 C. 435 D. 421
 E. 417
61. पहली और दूसरी मिश्र धातु में जस्ते और तांबे का अनुपात क्रमशः 1:2 और 2:3 है। एक नई मिश्र धातु के निर्माण के लिए इन दोनों मिश्र धातु को किस अनुपात में मिलाया जाए जिससे परिणामी मिश्र धातु में तत्वों का अनुपात 5:8 हो जाए?
 A. 7: 11 B. 3: 10
 C. 5: 11 D. 9: 11
 E. इनमें से कोई नहीं
62. 40 आदमियों वाला पहला समूह प्रतिदिन 8 घंटे कार्य करते हुए किसी कार्य को 15 दिनों में पूरा कर सकता है। उन दिनों की संख्या ज्ञात करें जिसमें 60 आदमियों वाला दूसरा समूह प्रतिदिन 4 घंटे कार्य करते हुए दो गुना कार्य कर सकता है। मान लीजिए कि पहले समूह के 3 आदमी 2 घंटे में उतना ही कार्य करते हैं जितना कि दूसरे समूह के 4 आदमी 3 घंटों में करते हैं।
 A. 60 दिन B. 40 दिन
 C. 80 दिन D. 70 दिन
 E. 75 दिन
63. यदि एक नाव धारा की दिशा में 75 किमी की दूरी तय करने में उतना ही समय लेती हो जितना धारा की विपरीत दिशा में 60 किमी की दूरी तय करने में लगता है तो ज्ञात करें धारा की दिशा में नाव की चाल शांत जल में नाव की चाल की कितनी प्रतिशत है?
 A. $111\frac{1}{9}\%$ B. $112\frac{1}{2}\%$
 C. 113% D. 140%
 E. 110%
64. दो रेलगाड़ियां हैं। पहली रेलगाड़ी एक खंभे को 24 सेकेंड में पार करती है। समान लंबाई की दूसरी रेलगाड़ी एक प्लेटफॉर्म को 30 सेकेंड में पार करती है लेकिन दूसरी रेलगाड़ी की चाल पहली रेलगाड़ी की चाल से 20% अधिक है। रेलगाड़ी की लंबाई और प्लेटफॉर्म की लंबाई के बीच अनुपात ज्ञात करें।
 A. 2: 1 B. 3: 1
 C. 2: 3 D. 3: 2
 E. 1: 2
65. दो पाइप A और B एक टंकी को 36 मिनट में भर सकते हैं। यदि दोनों पाइप 30 मिनट तक कार्य करें और इसके बाद पाइप B को बंद कर दिया जाए तो टंकी 40 मिनट में भर जाएगी। पाइप B को टंकी भरने में लगा समय ज्ञात करें?
 A. 45 मिनट B. 60 मिनट
 C. 75 मिनट D. 90 मिनट
 E. 85 मिनट
- निर्देश:** निम्न प्रश्न में प्रश्न चिन्ह (?) के स्थान पर क्या अनुमानित मान आएगा? (आपसे सटीक मान की गणना करने की अपेक्षा नहीं है)
66. $(421.98 + 478.21 + 1416.93 + 545.98 + 737.09) \div (? \times 3.931) = 60.029$
 A. 6 B. 8
 C. 9 D. 12
 E. 15

67. $\sqrt{256} \times 19.17 + 8.15 \times 13.78 = ?$
 A. 406 B. 450
 C. 432 D. 416
 E. 392
68. $16.217 \times 23.88 + ? = 18.98 \times 32.12$
 A. 216 B. 224
 C. 200 D. 228
 E. 250
69. $27.897 \times 16.21 = ? \times 13.98 + 69.87$
 A. 15 B. 22
 C. 27 D. 32
 E. 39
70. $272.112 + 189.98 + 84.101 = ? \times 12.89 \times 6.11$
 A. 5 B. 7
 C. 9 D. 11
 E. 13

निर्देश (71 - 75) : निम्नलिखित संख्या श्रृंखलाओं में प्रश्नवाचक चिन्ह (?) के स्थान पर क्या मान आएगा?

71. 117.5, 117, 119, 111, 143, ?
 A. 9 B. 12
 C. 15 D. 18
 E. 21
72. 15, 12, 31, 148, ?
 A. 1039 B. 1011
 C. 1012 D. 1024
 E. 1027
73. 1, 13, 83, 419, 1679, ?
 A. 5029 B. 5039
 C. 5019 D. 5049
 E. 5059
74. 12, 25, 48, 99, 194, 393, ?
 A. 780 B. 786
 C. 792 D. 783
 E. 789
75. 3, 11, 31, 69, 131, ?

- A. 215 B. 217
 C. 221 D. 223
 E. 213

निर्देश (76 - 80) : नीचे दी गई तालिका छह विभिन्न थिएटरों में बेची गई टिकटों की संख्या, बच्चों को बेची गई टिकटों की संख्या और शेष वयस्कों (पुरुष और महिला) को बेची गई टिकटों की संख्या को दर्शाती है। दी गई जानकारी का ध्यानपूर्वक अध्ययन करें और निम्नलिखित प्रश्नों के उत्तर दें:

| थिएटर | बच्चों को बेची गई टिकटें | वयस्कों (पुरुष : महिला) को बेची गई टिकटें |
|-------|--------------------------|---|
| C1 | 15 | 06:07 |
| C2 | 10 | 03:04 |
| C3 | 20 | 02:03 |
| C4 | 14 | 06:05 |
| C5 | 8 | 05:04 |
| C6 | 12 | 09:08 |

नोट : प्रत्येक थिएटर में कुल 80 टिकट बेचे गए।

76. C3 और C6 थिएटर द्वारा पुरुषों को बेचे गए टिकटों की कुल संख्या तथा C3 और C5 थिएटर द्वारा महिलाओं को बेचे गए टिकटों की कुल संख्या के बीच अनुपात ज्ञात करें?
 A. 14 : 19 B. 15 : 17
 C. 20 : 23 D. 16 : 19
 E. 14 : 17
77. C2 और C4 थिएटर से टिकट खरीदने वाली महिलाओं की कुल संख्या C5 थिएटर से टिकट खरीदने वाले पुरुषों की संख्या से कितने प्रतिशत अधिक है?
 A. $33\frac{1}{3}\%$ B. 50%
 C. $66\frac{2}{3}\%$ D. 75%
 E. 87.5%
78. यदि बच्चों, पुरुषों और महिलाओं के लिए प्रति टिकट का मूल्य क्रमशः 150 रुपये, 200 रुपये

और 250 रुपये हो तो C4 थिएटर द्वारा अर्जित कुल राजस्व ज्ञात करें?

- A. 16600 B. 15400
C. 16800 D. 15800
E. 16400

79. C1, C2 और C3 थिएटर से टिकट खरीदने वाले पुरुषों की औसत संख्या ज्ञात करें?

- A. 30 B. 28
C. 32 D. 34
E. 36

80. C4, C5 और C6 थिएटर से टिकट खरीदने वाले पुरुषों की कुल संख्या इन्हीं थिएटरों से टिकट खरीदने वाली महिलाओं की संख्या से कितनी अधिक है?

- A. 18 B. 20
C. 21 D. 24
E. 26

निर्देश: निम्नलिखित प्रत्येक प्रश्न में, दो समीकरण (i) और (ii) दिए गए हैं। आपको दोनों समीकरणों को हल करना है और उत्तर देना है।

81. (i) $2x^2 - 5x + 3 = 0$
(ii) $3y^2 - 4y + 1 = 0$
A. $x > y$ B. $x \geq y$
C. $x < y$ D. $x \leq y$
E. $x = y$ या x और y के बीच कोई संबंध स्थापित नहीं किया जा सकता।

निर्देश: निम्नलिखित प्रत्येक प्रश्न में, दो समीकरण (i) और (ii) दिए गए हैं। आपको दोनों समीकरणों को हल करना है और उत्तर देना है।

82. (i) $x^2 - 17x + 72 = 0$
(ii) $y^2 - 27y + 180 = 0$
A. $x > y$ B. $x \geq y$
C. x D. $x \leq y$
E. $x = y$ या x और y के बीच कोई संबंध स्थापित नहीं किया जा सकता।

निर्देश: निम्नलिखित प्रत्येक प्रश्न में, दो समीकरण (i) और (ii) दिए गए हैं। आपको दोनों समीकरणों को हल करना है और उत्तर देना है।

83. (i) $(x - 12)^2 = 0$
(ii) $y^2 - 21y + 108 = 0$
A. $x > y$ B. $x \geq y$
C. x D. $x \leq y$
E. $x = y$ या x और y के बीच कोई संबंध स्थापित नहीं किया जा सकता।

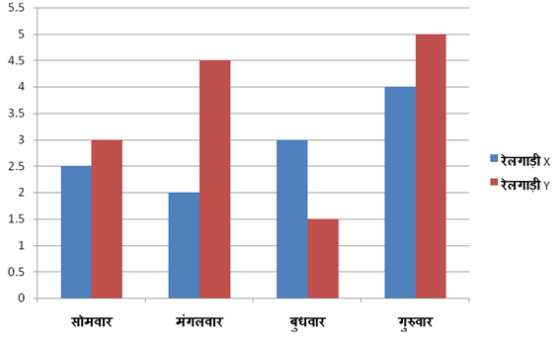
निर्देश: निम्नलिखित प्रत्येक प्रश्न में, दो समीकरण (i) और (ii) दिए गए हैं। आपको दोनों समीकरणों को हल करना है और उत्तर देना है।

84. (i) $2x^2 + 7x + 5 = 0$
(ii) $3y^2 + 12y + 9 = 0$
A. $x > y$ B. $x \geq y$
C. $x < y$ D. $x \leq y$
E. $x = y$ या x और y के बीच कोई संबंध स्थापित नहीं किया जा सकता।

निर्देश: निम्नलिखित प्रत्येक प्रश्न में, दो समीकरण (i) और (ii) दिए गए हैं। आपको दोनों समीकरणों को हल करना है और उत्तर देना है।

85. (i) $x^2 + 2x - 35 = 0$
(ii) $y^2 + 15y + 56 = 0$
A. $x > y$ B. $x \geq y$
C. $x < y$ D. $x \leq y$
E. $x = y$ या x और y के बीच कोई संबंध स्थापित नहीं किया जा सकता।

निर्देश (86 - 90) : नीचे दिया गया बार आरेख दो रेलगाड़ियों द्वारा विभिन्न दिनों में लिए गए समय (घंटे में) को दर्शाता है। दी गई जानकारी का ध्यानपूर्वक अध्ययन करें और निम्नलिखित प्रश्नों के उत्तर दें।



नोट: प्रत्येक रेलगाड़ी प्रत्येक दिन 450 किलोमीटर की दूरी तय करती हैं।

86. मंगलवार को रेलगाड़ी 'X' की गति सोमवार को रेलगाड़ी 'Y' की गति से कितने प्रतिशत अधिक है?
- A. $66\frac{2}{3}\%$ B. 75%
C. $33\frac{1}{3}\%$ D. 50%
E. 87.5%
87. मंगलवार को रेलगाड़ी 'Y' और बुधवार को रेलगाड़ी 'X' की औसत गति ज्ञात करें?
- A. 140 B. 130
C. 135 D. 120
E. 150
88. शुक्रवार को रेलगाड़ी 'X' की गति में 60% की वृद्धि हो गई और रेलगाड़ी 'Y' की गति गुरुवार की तुलना में 25% बढ़ गई, तो दोनों रेलगाड़ियों द्वारा समान दूरी तय करने में लिए गए समय का योग ज्ञात करें?
- A. 6.5 घंटे B. 7.5 घंटे
C. 6 घंटे D. 7 घंटे
E. 8 घंटे
89. मंगलवार को रेलगाड़ी 'X' की गति बुधवार को रेलगाड़ी 'Y' की गति से कितनी कम है?
- A. 50 कि.मी./घंटे B. 60 कि.मी./घंटे
C. 75 कि.मी./घंटे D. 85 कि.मी./घंटे
E. 100 कि.मी./घंटे
90. यदि मंगलवार के दिन रेलगाड़ी 'X' की गति में 60% की वृद्धि कर दी जाए तो रेलगाड़ी 'X' की गई दूरी को कितने समय में तय कर सकती है?

- A. 3 घंटे B. 2.5 घंटे
C. 1.5 घंटे D. 1.25 घंटे
E. 1.75 घंटे

निर्देश (91 - 95) : नीचे दी गई जानकारी का ध्यानपूर्वक अध्ययन करें तथा इसके आधार पर प्रश्नों के उत्तर दें।

दस विभिन्न कॉलेजों से दस विद्यार्थी क्रमशः E, F, G, H, I, J, K, L, M और N हैं लेकिन आवश्यक नहीं है कि इसी क्रम में हों। प्रत्येक विद्यार्थी सप्ताह के सोमवार से शुक्रवार तक परीक्षा देता है। प्रत्येक विद्यार्थी दो पालियों में से या तो सुबह 7.00 बजे या सुबह 10.00 बजे परीक्षा देता है। केवल दो व्यक्ति ही J और N के बीच परीक्षा में भाग लेते हैं। I और K शुक्रवार को परीक्षा में भाग नहीं लेते हैं। M मंगलवार सुबह 7.00 बजे परीक्षा में भाग लेता है। L सुबह 10.00 बजे परीक्षा में भाग नहीं लेता है। K और H के मध्य परीक्षा में भाग लेने वाले छात्रों की संख्या G और L के मध्य परीक्षा में भाग लेने वाले छात्रों की संख्या के समान है। H, I के बाद किसी भी दिन परीक्षा में भाग नहीं लेता है। J, L के बाद किसी भी दिन परीक्षा में भाग नहीं लेता है। F, M के ठीक पहले परीक्षा में भाग लेता है। M, K के पहले किसी भी दिन परीक्षा में भाग नहीं लेता है। N के ठीक पहले व्यक्ति सुबह 7.00 बजे परीक्षा में भाग लेता है। H सोमवार को परीक्षा देने वाले व्यक्ति के एक दम अगले दिन परीक्षा में शामिल होता है। J सुबह 10.00 बजे परीक्षा नहीं देता है। केवल तीन व्यक्ति ही K और I के बीच परीक्षा देते हैं।

91. I और L के बीच कितने व्यक्ति 10.00 बजे परीक्षा देते हैं?
- A. 5 B. 6
C. 2 D. 4
E. इनमें से कोई नहीं

92. निम्न में से कौन सा व्यक्ति सुबह 7.00 बजे परीक्षा में भाग लेता है?
A. N B. L
C. E D. G
E. H
93. निम्न पांच में से चार किसी विशेष नियम के तहत समान हैं, समूह में सम्मिलित न होने वाले विकल्प की पहचान करें?
A. F - मंगलवार B. H - बुधवार
C. K - मंगलवार D. E - शुक्रवार
E. L - शुक्रवार
94. निम्न में से सही मिलान कौन है?
A. M - सोमवार B. H - मंगलवार
C. F - शुक्रवार D. K - मंगलवार
E. M - बुधवार
95. निम्न में से कौन छात्र शुक्रवार को परीक्षा देते हैं?
A. E, F B. G, H
C. I, K D. L, N
E. K, M

निर्देश: नीचे दिए गए प्रश्न में तीन कथन दिए गए हैं जिसके बाद तीन निष्कर्ष संख्या I, II और III दिए गए हैं। आपको दिए गए कथनों को सत्य मानना है चाहे वे आमतौर पर ज्ञात तथ्यों से भिन्न प्रतीत होते हों। संपूर्ण निष्कर्ष को पढ़ें और फिर तय करें कि दिए गए निष्कर्षों में से कौन सा निष्कर्ष सामान्यतः ज्ञात तथ्यों को अनदेखा करते हुए तार्किक रूप से दिए गए कथनों का अनुसरण करता है।

96. **कथन:**
सभी हाथी बिल्ली हैं।
सभी बिल्ली शेर हैं।
कोई भी कुत्ता हाथी नहीं है।
निष्कर्ष:
I. कुछ शेर कुत्ते हैं।
II. कुछ बिल्ली के कुत्ता होने की संभावना है।
III. कुछ कुत्ते हाथी हैं।

- A. केवल I अनुसरण करता है
B. केवल II अनुसरण करता है
C. केवल III अनुसरण करता है
D. सभी अनुसरण करते हैं
E. इनमें से कोई नहीं

निर्देश: नीचे दिए गए प्रश्न में तीन कथन दिए गए हैं जिसके बाद तीन निष्कर्ष संख्या I, II और III दिए गए हैं। आपको दिए गए कथनों को सत्य मानना है चाहे वे आमतौर पर ज्ञात तथ्यों से भिन्न प्रतीत होते हों। संपूर्ण निष्कर्ष को पढ़ें और फिर तय करें कि दिए गए निष्कर्षों में से कौन सा निष्कर्ष सामान्यतः ज्ञात तथ्यों को अनदेखा करते हुए तार्किक रूप से दिए गए कथनों का अनुसरण करता है।

97. **कथन:**
कुछ मार्कर स्केच हैं।
कुछ स्केच शार्पनर हैं।
कोई भी शार्पनर रबड़ नहीं है।

निष्कर्ष :

- I. कुछ रबड़ स्केच हैं।
II. कुछ रबड़ के शार्पनर होने की संभावना है।
III. सभी स्केच रबड़ हो सकते हैं।
A. कोई भी अनुसरण नहीं करता है।
B. केवल II अनुसरण करता है।
C. केवल III अनुसरण करता है।
D. केवल I अनुसरण करता है।
E. या तो केवल II या III अनुसरण करता है।

निर्देश: नीचे दिए गए प्रश्न में तीन कथन दिए गए हैं जिसके बाद तीन निष्कर्ष संख्या I, II और III दिए गए हैं। आपको दिए गए कथनों को सत्य मानना है चाहे वे आमतौर पर ज्ञात तथ्यों से भिन्न प्रतीत होते हों। संपूर्ण निष्कर्ष को पढ़ें और फिर तय करें कि दिए गए निष्कर्षों में से कौन सा निष्कर्ष सामान्यतः ज्ञात तथ्यों को अनदेखा करते हुए तार्किक रूप से दिए गए कथनों का अनुसरण करता है।

98. कथन:

सभी रूबी डायमंड हैं।
कुछ रूबी गोल्ड हैं।
कोई भी डायमंड सिल्वर नहीं है।

निष्कर्ष:

- I. कुछ रूबी सिल्वर नहीं हैं।
- II. सभी गोल्ड के सिल्वर होने की संभावना है।
- III. कुछ सिल्वर के गोल्ड होने की संभावना है।
- A. केवल I और II अनुसरण करते हैं।
- B. केवल I और III अनुसरण करते हैं।
- C. केवल II और III अनुसरण करते हैं।
- D. सभी I, II और III अनुसरण करते हैं।
- E. इनमें से कोई नहीं

निर्देश: नीचे दिए गए प्रत्येक प्रश्न में तीन कथन दिए गए हैं जिसके बाद तीन निष्कर्ष संख्या I, II और III दिए गए हैं। आपको दिए गए कथनों को सत्य मानना है चाहे वे आमतौर पर ज्ञात तथ्यों से भिन्न प्रतीत होते हों। संपूर्ण निष्कर्ष को पढ़ें और फिर तय करें कि दिए गए निष्कर्षों में से कौन सा निष्कर्ष सामान्यतः ज्ञात तथ्यों को अनदेखा करते हुए तार्किक रूप से दिए गए कथनों का अनुसरण करता है।

99. कथन:

कुछ A, B हैं।
कुछ B, C नहीं हैं।
कुछ D, C हैं।

निष्कर्ष:

- I. सभी C, B हो सकते हैं।
- II. सभी D कभी भी A नहीं हो सकते हैं।
- A. केवल I और II अनुसरण करते हैं।
- B. केवल II अनुसरण करता है।
- C. केवल I अनुसरण करता है।
- D. कोई भी अनुसरण नहीं करता है।
- E. इनमें से कोई नहीं

निर्देश (100 - 102) : निम्नलिखित अक्षरांकीय श्रृंखला का ध्यानपूर्वक अध्ययन करें और नीचे दिए गए प्रश्नों के उत्तर दें।
1 Z 6 H & R \$ 4 Y Q % T ! 3 9 S I O 9 9 J L E U * K @ 3
चरण I- जिन अक्षरों के तुरंत पहले और तुरंत बाद में एक प्रतीक है, को श्रृंखला के अंत में विपरीत वर्णमाला क्रम में व्यवस्थित किया गया है। (वे 3 के बाद व्यवस्थित हैं)
चरण II- ऐसी संख्याएं जिनके तुरंत पहले अक्षर और तुरंत बाद एक प्रतीक है, को 9 और J के बीच बढ़ते क्रम में व्यवस्थित किया गया है।
चरण III - जिन संख्याओं के तुरंत बाद अक्षर है, उनकी स्थितियों को ठीक बाद के तत्व के संबंध में परस्पर बदल दिया जाता है।
नोट: सभी चरण क्रम अर्थात् I, II और III में प्रदर्शित किए जाते हैं।

100. चरण-2 में श्रृंखला के अंत में कितने अक्षरों को व्यवस्थित किया गया है?

- A. एक
- B. तीन
- C. चार
- D. पाँच
- E. पाँच से अधिक

101. निम्न में से कौन से श्रृंखला के तत्व हैं जो बाएं छोर से दूसरे स्थान पर हैं और चरण III में दाएं छोर से छठे स्थान पर हैं?

- A. 63
- B. 7#
- C. 1*
- D. P6
- E. 6#

102. चरण-1 में संख्याओं के ठीक बाद कितने प्रतीक हैं?

- A. एक
- B. तीन
- C. चार
- D. पाँच
- E. दो

निर्देश (103 - 105) : एक शब्द और संख्या व्यवस्था मशीन को जब शब्दों और संख्याओं की एक इनपुट लाइन दी जाती है तो वे उन्हें प्रत्येक चरण में निम्नलिखित विशेष नियम का अनुसरण करके पुनर्व्यवस्थित करती हैं।

निम्नलिखित इनपुट और पुनर्व्यवस्था का एक उदाहरण है।

इनपुट - acon 82 43 exam 16 acer loge 77 rope 22

चरण I - care 82 acon 43 exam 16 loge 77 rope 22

चरण II- cano 77 care 82 43 exam 16 loge rope 22

चरण III- emax 43 cano 77 care 82 16 loge rope 22

चरण IV- lego 22 emax 43 cano 77 care 82 16 rope

चरण V- rpeo 16 lego 22 emax 43 cano 77 care 82

इनपुट- 54 roll 39 back 87 25 cash seat 46 beat

103. निम्न में से किस चरण में 25 और seat को एक-साथ स्थापित किया गया है?

- A. चरण-III B. चरण-IV
C. चरण-III और चरण-IV
D. चरण-II E. इनमें से कोई नहीं

104. चरण-2 में 54 और 39 के बीच कितने तत्व हैं?

- A. एक B. दो
C. तीन D. चार
E. इनमें से कोई नहीं

105. चरण-IV में chsa और 54 के बीच कौन से तत्व हैं?

- A. 46, back B. ebta, 46
C. 87, 25 D. rlo, seat
E. इनमें से कोई नहीं

निर्देश (106 - 110) : निम्नलिखित जानकारी का ध्यानपूर्वक अध्ययन करें तथा दिये गये निम्न प्रश्नों के उत्तर दें। विभिन्न देशों कनाडा, क्यूबा, जापान, फ्रांस, अंगोला, भूटान, डेनमार्क और रूस से संबंधित आठ व्यक्ति दो समांतर पंक्तियों (प्रत्येक में चार व्यक्ति) में एक दूसरे के समाने समान दूरी

पर बैठे हैं। पंक्ति 1 में A, B, C और D बैठे हैं और सभी का मुख उत्तर की ओर है। पंक्ति 2 में M, N, O और P बैठे हैं और उनका मुख दक्षिण की ओर है। इसलिये, दी गई व्यवस्था में, प्रत्येक सदस्य का मुख दूसरी पंक्ति में बैठे व्यक्ति के सामने हैं। उपरोक्त दी गई जानकारी में दिया गया व्यक्तियों का दिया गया क्रम आवश्यक नहीं है कि उत्तर व्यवस्था के समान है।)

* C रूस से संबंधित व्यक्ति के दायें दूसरे स्थान पर है। O रूस से संबंधित व्यक्ति के सम्मुख व्यक्ति का निकटतम पड़ोसी है।

* O और फ्रांस से संबंधित व्यक्ति के मध्य केवल एक व्यक्ति बैठा है। फ्रांस से संबंधित व्यक्ति का निकटतम पड़ोसी जापान से संबंधित व्यक्ति के सामने बैठा है।

* कनाडा से संबंधित व्यक्ति भूटान से संबंधित व्यक्ति के सामने है। O भूटान से नहीं है। M फ्रांस से नहीं है। M रूस से संबंधित व्यक्ति के सम्मुख नहीं बैठा है।

* N अंगोला से संबंधित व्यक्ति के सामने बैठा है। P से सामने बैठा व्यक्ति A के ठीक बायें बैठा है।

* B किसी भी पंक्ति के छोर पर नहीं बैठा है। रूस से संबंधित व्यक्ति क्यूबा से संबंधित व्यक्ति के सामने नहीं बैठा है।

106. O और फ्रांस से संबंधित व्यक्ति के मध्य कौन बैठा है?

- A. वह जो भूटान से है
B. M C. N
D. वह जो क्यूबा से संबंधित है।
E. P

107. निम्नलिखित में से कौन पंक्ति के आखिरी छोर पर बैठा है?

- A. D और फ्रांस से संबंधित व्यक्ति
B. कनाडा और डेनमार्क से संबंधित व्यक्ति
C. अंगोला से संबंधित और M
D. क्यूबा से संबंधित व्यक्ति और D
E. C और N

108. निम्नलिखित में से कौन सा व्यक्ति रूस से संबंधित व्यक्ति के सामने बैठा है?

- A. डेनमार्क से संबंधित व्यक्ति
B. M C. O
D. क्यूबा से संबंधित व्यक्ति
E. जापान से संबंधित व्यक्ति

109. निम्न में से कौन सा व्यक्ति क्यूबा से है?

- A. C B. O
C. M D. D
E. A

110. C निम्न में से किस देश से है?

- A. कनाडा B. क्यूबा
C. अंगोला D. भूटान
E. जापान

निर्देश (111 - 113) : निम्नलिखित अक्षरांकीय श्रृंखला का ध्यानपूर्वक अध्ययन करें और नीचे दिए गए प्रश्नों के उत्तर दें:
24EAFR 63WBO 42ENDO 64TVZR 75GRTY

111. अलग अलग शब्दों के अक्षरों से कितने सार्थक अलग अलग शब्द बनाए जा सकते हैं जो उन संख्याओं से जुड़े हैं जिसमें दी गई अक्षरांकीय श्रृंखला में कम से कम एक अंक विषम अंक है?

- A. एक B. दो
C. तीन D. चार
E. चार से अधिक

112. शब्दों को उन संख्याओं के आरोही क्रम के अनुसार व्यवस्थित किया जाता है जो बाएं से दाएं उनसे जुड़े होते हैं, तो श्रृंखला के संख्यात्मक मूल्य का योग क्या है जो बाएं से तीसरा और दाएं से दूसरे है?

- A. 105 B. 102
C. 127 D. 110
E. 112

113. अक्षर जो संख्याओं से जुड़े होते हैं जिनमें कम से कम एक विषम अंक होता है, को बाएं से दाएं तक उनकी संख्याओं के अवरोही क्रम के

अनुसार व्यवस्थित किया जाता है और फिर शब्दों के सभी अक्षरों को वर्णानुक्रम में व्यवस्थित किया जाता है, तो निम्न में से कौन सा बाएं छोर से छठा अक्षर है?

- A. M B. O
C. N D. R
E. इनमें से कोई नहीं

निर्देश (114 - 118) : निम्नलिखित जानकारी को ध्यानपूर्वक पढ़ें और उसके आधार पर प्रश्नों के उत्तर दें-
एक परिवार में 9 सदस्य अर्थात् A, B, C, D, E, F, K, H और J हैं जिनमें 4 पीढ़ियां और 5 पुरुष सदस्य हैं। उन सभी का जन्म अलग-अलग वर्षों अर्थात् 2016, 2002, 2006, 2000, 1988, 1982, 1980, 1962 और 1960 में हुआ है लेकिन आवश्यक नहीं है कि इसी क्रम में हों। उनकी मासिक आय भिन्न-भिन्न है जोकि 18000, 15000, 20000, 16000, 22000, 25000, 14000, 10000 और 27000 है लेकिन आवश्यक नहीं है कि इसी क्रम में हों। F और K विवाहित जोड़े हैं। E, D की बहन है। B, F की बहू है जो E के भाई की दादी है। C की दो संतानें हैं। इस परिवार में सबसे बड़े व्यक्ति की मासिक आय 18000 रुपये है। E के पति का जन्म वर्ष 2002 में हुआ है और E तथा E की पुत्री की आयु के बीच 16 वर्ष का अंतर है। D का जन्म वर्ष 2006 में हुआ है और उसके पिता का जन्म वर्ष 1980 में हुआ है। F के केवल दो पुत्र हैं और B के पति का जन्म 1982 में हुआ है और उसकी मासिक आय 22000 रुपये है। जिसकी आय सबसे अधिक है वह E का पति है और E तथा E के पति की मासिक आय के बीच 13000 रुपये का अंतर है। B और B के पति की आयु के बीच 6 वर्ष का अंतर है। K की मासिक आय 15000 रुपये है और उसके पुत्र की मासिक आय 20000 रुपये है। K इस परिवार का सबसे बड़ा सदस्य नहीं है और H,

D का साला है तथा J एक महिला सदस्य है। सबसे युवा सदस्य की मासिक आय सबसे कम है। D की मासिक आय दूसरी सबसे अधिक है और F की मासिक आय उसकी बहू से अधिक है। J, E की बेटा है।

114. निम्न में से किसकी मासिक आय सबसे कम है?

- A. A B. K
C. J D. D
E. C

115. H का जन्म निम्न में से किस वर्ष में हुआ है?

- A. 2006 B. 2002
C. 1980
D. निर्धारित नहीं किया जा सकता
E. इनमें से कोई नहीं

116. कितने व्यक्तियों की आयु A से अधिक है?

- A. 2 B. 4
C. 3 D. 1
E. इनमें से कोई नहीं

117. निम्न में से किसका जन्म वर्ष 2000 में हुआ है?

- A. A B. C
C. D D. E
E. इनमें से कोई नहीं

118. निम्न में से किसकी मासिक आय सबसे अधिक है?

- A. A B. C
C. H D. K
E. D

निर्देश: दिए गए प्रश्न में एक प्रश्न तथा दो कथन संख्या I, II तथा III दिए गए हैं। आपको यह तय करना है कि कथनों में दिया गया डेटा प्रश्न का उत्तर देने के लिए पर्याप्त है या नहीं।

119. सात व्यक्ति P, Q, R, S, T, U और V अलग-अलग महीनों में जनवरी से जुलाई तक पैदा हुए थे लेकिन इसी क्रम में हो यह आवश्यक नहीं है। निम्नलिखित में से कौन जनवरी महीने में पैदा हुआ था?

I. Q उस महीने में पैदा हुआ जिसमें 31 दिन थे। Q और P के मध्य दो व्यक्ति पैदा हुए थे। P, Q के बाद पैदा हुआ था।

II. U, P के ठीक बाद पैदा हुआ था। R उस महीने में पैदा हुआ था जिसमें सबसे कम दिन होते हैं। S, U के बाद पैदा हुआ था। Q मार्च में पैदा नहीं हुआ।

III. T और V के मध्य दो व्यक्ति पैदा हुए थे। S, V के बाद पैदा हुआ था। R, P से पहले पैदा हुआ था।

निर्देश: दिए गए प्रश्न में एक प्रश्न और तीन कथन I, II और III समाहित हैं। आपको यह निर्धारित करना है कि किस कथन में दी गई जानकारी प्रश्न का उत्तर देने के लिए पर्याप्त है। इन पर आधारित विकल्पों में से अपने उत्तर का चयन करें।

120. A, B, C, D, E, F और G के बीच, क्या B, F से बड़ा है?

I. A या तो B से बड़ा या बराबर है जो C से छोटा है जो D के बराबर है जो E से बड़ा है जो या तो F से बड़ा या बराबर है जो G के बराबर है।

II. A, B से छोटा या बराबर है जो C के बराबर है जो D से बड़ा है जो E से बड़ा है जो F से छोटा है जो G से छोटा है।

III. A, B से बड़ा है जो C से बड़ा है जो D के बराबर है जो E से बड़ा या बराबर है जो F से बड़ा है जो G से छोटा है।

- A. I और II B. II और III
C. III से D. कोई भी दो
E. उपरोक्त सभी

निर्देश (121 - 125): निम्नलिखित जानकारी को ध्यान से पढ़ें तथा दिए गए निम्न प्रश्नों के उत्तर दें -

आठ शेल्फ A, B, C, D, E, F, G तथा H में आठ बाक्स रखे हैं, पर आवश्यक नहीं कि इसी क्रम में। वे ग्रे, गुलाबी, हरा, भूरा, लाल, सफेद, नारंगी तथा नीले कागज के रंग में रंगे हैं पर आवश्यक नहीं कि इसी क्रम में हो। B तथा H के बीच में सिर्फ एक बाक्स है। नीला बाक्स H के ठीक नीचे रखा है। H का रंग हरा या भूरा नहीं है। G, B के निकटतम है लेकिन H के निकटतम नहीं है। नारंगी बाक्स नीले बाक्स के चार बाक्स ऊपर स्थान पर है। A, C के ठीक ऊपर रखा है और उनमें से कोई भी नारंगी या नीला नहीं है। C के नीचे कम से कम दो बाक्स रखे हैं। सफेद रंग का बाक्स ग्रे बाक्स के ठीक ऊपर रखा है। F का रंग न तो नीला है न वो सबसे ऊपर रखा है। भूरा बाक्स सबसे नीचे नहीं रखा है। E जिसका रंग लाल है A के चार बाक्स नीचे रखा है।

121. बाक्स H का रंग क्या है?
 A. ग्रे B. गुलाबी
 C. सफेद D. नीला
 E. इनमें से कोई नहीं
122. किस बाक्स का रंग नीला है?
 A. A B. C
 C. D D. G
 E. इनमें से कोई नहीं
123. सबसे ऊपर तथा सबसे नीचे के बाक्सों का रंग क्रमशः क्या है?
 A. भूरा और लाल B. नारंगी और लाल
 C. ग्रे और गुलाबी D. हरा और गुलाबी
 E. सफेद और हरा
124. F तथा E के बीच कितने बाक्स रखे हैं?
 A. दो B. तीन
 C. चार D. एक
 E. इनमें से कोई नहीं
125. निम्न में से कौन सा कथन सत्य है?
 A. बाक्स C का रंग सफेद है।
 B. लाल बाक्स नीचे से तीसरा है।
 C. नारंगी बाक्स के ऊपर सिर्फ एक बाक्स है।
 D. G तथा गुलाबी बाक्स के बीच दो बाक्स

हैं।

E. उपरोक्त में से कोई नहीं

निर्देश: नीचे दिए गए प्रत्येक प्रश्न में दिए गए कथन के बाद दो धारणाएं संख्या I और II दी गई हैं। एक धारणा को सत्य मानते हुए। आपको कथन और निम्नलिखित धारणा पर विचार करना होगा और यह तय करना होगा कि कौन सी धारणा कथन में निहित है। उत्तर दें।

126. **कथन:**

सार्वजनिक हित में एक सरकारी विज्ञापन- "एक बच्चे के बेहतर मानसिक स्वास्थ्य के लिए, उसे पांच साल की आयु के बाद ही स्कूल में भर्ती करें।"

धारणाएं

- I. पांच साल की आयु से पहले बच्चा नहीं सीख सकता है।
 II. कुछ स्कूल पांच साल से कम आयु के बच्चों को भर्ती कर लेते हैं।
 A. केवल धारणा I निहित है
 B. केवल धारणा II निहित है
 C. या तो I या II निहित है
 D. न तो धारणा I और न ही II निहित है
 E. धारणा I और II दोनों निहित हैं

निर्देश: नीचे दिए गए प्रश्न में दिए गए कथन के बाद दो धारणाएं संख्या I और II दी गई हैं। एक धारणा को सत्य मानते हुए। आपको कथन और निम्नलिखित धारणा पर विचार करना होगा और यह तय करना होगा कि कौन सी धारणा कथन में निहित है। उत्तर दें।

127. **कथन :** भूकंप के कारण विस्थापित लोगों के पुनर्वास हेतु सरकार को सेना की तैनाती करनी चाहिए।

धारणाएं

- I. युद्ध के अलावा अन्य उद्देश्यों के लिए भी सेना का इस्तेमाल किया जा सकता है।

II. केवल सेना भूकंप के विस्थापित पीड़ितों का पुनर्वास कर सकती है।

A. केवल धारणा I निहित है

B. केवल धारणा II निहित है

C. या तो I या II निहित है

D. न तो धारणा I और न ही II निहित है

E. धारणा I और II दोनों निहित हैं

128. कथन :

घर की बिक्री में गिरावट ने दिल्ली के राष्ट्रीय राजधानी क्षेत्र में बिल्डरों की इन्वेंट्री को "अविश्वसनीय स्तर" में धकेल दिया है, जिससे वास्तविक मूल्य सुधार के लिए स्थितियां पैदा हुई हैं जिसे डेवलपर्स ने अब तक परिहार किया है।

दिए गए कथन के आधार पर निम्न में से कौन सा कथन अनुमानित है?

A. अधिकांश बड़े शहरों में घरों की मांग काफी कम है।

B. उच्च इन्वेंटरी स्तर बिल्डरों द्वारा नई परियोजनाओं को लॉन्च करने की क्षमता में बाधा डाल देगा।

C. बाजार में बिल्डर्स जिन्होंने समय पर और अपने वादों को पूरा करने का अच्छा ट्रैक रिकॉर्ड दिखाया है, वे इस धीमी बाजार में भी बिक्री हासिल करने में सक्षम हैं।

D. जब तक यह अनसोल्ड स्टॉक समाप्त नहीं हो जाता है, तब तक इस बाजार में उपभोक्ता का विश्वास वापस आना मुश्किल होगा।

E. उच्च कीमतों ने औसत घरेलू खरीदारों की पहुंच से परे अधिकतर बिक्री वाले अपार्टमेंटों को ओर दूर कर दिया है।

निर्देश : दिए गए प्रश्न में एक प्रश्न और दो कथन I, II और III समाहित हैं। आपको यह निर्धारित करना है कि किस कथन में दी गई जानकारी प्रश्न का उत्तर देने के लिए पर्याप्त है कि नहीं है। इन पर आधारित विकल्पों में से अपने उत्तर का चयन करें।

129. चार मित्र अर्थात् A, B, C और D एक आयताकार मेज के चारों ओर बैठे हैं। B किसके विपरीत बैठा है?

I: A, B और D के ठीक निकट बैठा है। C, B के तुरंत बाद बैठा है। D, A की ठीक बाईं ओर बैठा है।

II: C, A की दाईं ओर से दूसरे स्थान पर है। A का मुख केंद्र की ओर है। D, C और A के ठीक दाईं ओर बैठा है।

III: B, C के ठीक बाईं ओर बैठा है। D, B की तुरंत बाद नहीं बैठा है। D, A की ठीक दाईं ओर बैठा है।

A. अकेले कथन I या अकेले कथन II या अकेले कथन III में दिया गया डेटा प्रश्न का उत्तर देने के लिए पर्याप्त है।

B. कथन II और III में दिया गया डेटा प्रश्न का उत्तर देने के लिए पर्याप्त है, जबकि कथन I में दिया गया डेटा प्रश्न का उत्तर देने के लिए पर्याप्त नहीं है।

C. सभी कथनों I, II और III में दिया गया डेटा प्रश्न का उत्तर देने के लिए आवश्यक है।

D. कथन I और III में दिया गया डेटा प्रश्न का उत्तर देने के लिए पर्याप्त है, जबकि कथन II में दिया गया डेटा प्रश्न का उत्तर देने के लिए पर्याप्त नहीं है।

E. कथन I और III में दिया गया डेटा प्रश्न का उत्तर देने के लिए पर्याप्त है, जबकि कथन II में दिया गया डेटा प्रश्न का उत्तर देने के लिए पर्याप्त नहीं है।

निर्देश: दिए गए प्रश्न में एक प्रश्न और दो कथन I, II और III समाहित हैं। आपको यह निर्धारित करना है कि किस कथन में दी गई जानकारी प्रश्न का उत्तर देने के लिए पर्याप्त है कि नहीं है। इन पर आधारित विकल्पों में से अपने उत्तर का चयन करें।

130. छह किताबें भौतिकी, गणित, जीवविज्ञान, सामाजिक विज्ञान, अंग्रेजी और हिंदी को एक-साथ रखा जाना है। नीचे की किताब को संख्या

I, फिर II और इसी तरह से संख्याएं दी गई हैं।
 किसे नंबर 1 दिया गया है?
 I. जीवविज्ञान और गणित के बीच केवल एक किताब है। भौतिकी को सम संख्या स्थान दिया गया है।
 II. अंग्रेजी को सम संख्या स्थान नहीं दिया गया है। गणित को सम संख्या स्थान दिया गया है। गणित को शीर्ष स्थान नहीं दिया गया है।
 III. सामाजिक विज्ञान को विषम संख्या स्थान दिया गया है। भौतिकी और सामाजिक विज्ञान के बीच 2 किताबें रखी गई हैं। अंग्रेजी को नीचे से जीवविज्ञान के ठीक बाद रखा गया है।
 A. अकेले कथन I या अकेले कथन II या अकेले कथन III में दिया गया डेटा प्रश्न का उत्तर देने के लिए पर्याप्त है।
 B. कथन II और III में दिया गया डेटा प्रश्न का उत्तर देने के लिए पर्याप्त है, जबकि कथन I में दिया गया डेटा प्रश्न का उत्तर देने के लिए पर्याप्त नहीं है।
 C. सभी कथनों I, II और III में दिया गया डेटा प्रश्न का उत्तर देने के लिए आवश्यक है।
 D. कथन I और III में दिया गया डेटा प्रश्न का उत्तर देने के लिए पर्याप्त है, जबकि कथन II में दिया गया डेटा प्रश्न का उत्तर देने के लिए पर्याप्त नहीं है।
 E. कथन I और III में दिया गया डेटा प्रश्न का उत्तर देने के लिए पर्याप्त है, जबकि कथन II में दिया गया डेटा प्रश्न का उत्तर देने के लिए पर्याप्त नहीं है।

निर्देश: दिए गए प्रश्न में एक प्रश्न और तीन कथन I, II और III समाहित हैं। आपको यह निर्धारित करना है कि किस कथन में दी गई जानकारी प्रश्न का उत्तर देने के लिए पर्याप्त है कि नहीं है। इन पर आधारित विकल्पों में से अपने उत्तर का चयन करें।

131. परिवार के छह सदस्यों अर्थात् B, C, D, E, F के बीच सबसे बड़ा कौन है?
 I. A, D की बहू है, E, F, जो B के पिता हैं

का पोता है।
 II. A सबसे छोटा नहीं है जबकि L सबसे बड़ा है।
 III. B, C, जो F का पोता है के पिता हैं। D, E के बेटे और C के पिता की पत्नी है।
 A. अकेले कथन I या अकेले कथन II या अकेले कथन III में दिया गया डेटा प्रश्न का उत्तर देने के लिए पर्याप्त है।
 B. कथन II और III में दिया गया डेटा प्रश्न का उत्तर देने के लिए पर्याप्त है, जबकि कथन I में दिया गया डेटा प्रश्न का उत्तर देने के लिए पर्याप्त नहीं है।
 C. सभी कथनों I, II और III में दिया गया डेटा प्रश्न का उत्तर देने के लिए आवश्यक है।
 D. कथन I और III में दिया गया डेटा प्रश्न का उत्तर देने के लिए पर्याप्त है, जबकि कथन II में दिया गया डेटा प्रश्न का उत्तर देने के लिए पर्याप्त नहीं है।
 E. कथन I और III में दिया गया डेटा प्रश्न का उत्तर देने के लिए पर्याप्त है, जबकि कथन II में दिया गया डेटा प्रश्न का उत्तर देने के लिए पर्याप्त नहीं है।

निर्देश (132 - 134) : निम्नलिखित जानकारी का ध्यानपूर्वक अध्ययन करें और नीचे दिए गए प्रश्नों के उत्तर दें।
 नौ व्यक्ति नामतः R, S, T, U, V, W, X, Y और Z एक से तीसरी मंजिल तक विभिन्न मंजिलों पर रहते हैं। भूतल संख्या 1 और शीर्ष मंजिल संख्या 3 है, लेकिन आवश्यक नहीं है कि इसी क्रम में हों। पश्चिम से पूर्व तक प्रत्येक मंजिल पर तीन फ्लैट अर्थात् फ्लैट-1, फ्लैट-2 और फ्लैट-3 हैं ठीक इसी प्रकार तीसरी मंजिल का फ्लैट-1, दूसरे मंजिल के फ्लैट-1 के ठीक उपर है जो कि पहली मंजिल के फ्लैट-1 के ठीक उपर है तथा दूसरे फ्लैट भी इसी क्रम में हैं। R सम संख्या वाले फ्लैट में रहता है। X, U के फ्लैट के तुरंत ऊपर फ्लैट संख्या 3 में रहता है। R उस मंजिल पर नहीं रहता है जिस

पर X रहता है। W, Y के तुरंत उपर रहता है। Y उस मंजिल पर नहीं रहता है जिस पर U रहता है। V, U से नीचे रहता है। T, Z की बाईं ओर रहता है।

132. पहली मंजिल के फ्लैट-3 में कौन रहता है?

- A. R B. S
C. X D. V
E. इनमें से कोई नहीं

133. निम्न में से कौन X की तुरंत बाईं ओर रहता है?

- A. Z B. T
C. W D. Y
E. इनमें से कोई नहीं

134. U के नीचे कितने व्यक्ति रहते हैं?

- A. दो B. कोई नहीं
C. एक D. या तो A या C
E. इनमें से कोई नहीं

निर्देश (135 - 137) : निम्नलिखित जानकारी का अध्ययन करें और नीचे दिए गए प्रश्नों के उत्तर दें:
PQ अक्ष इस तरह से है कि P उत्तर में है और Q दक्षिण दिशा में है। AB अक्ष इस तरह से है कि A पश्चिम दिशा में है और B पूर्व दिशा में है। PQ अक्ष और AB अक्ष एक बिंदु Z पर इस तरह से प्रतिच्छेद करते हैं कि PZ 15 मीटर है, ZQ 17 मीटर है, ZA 12 मीटर है, ZB 24 मीटर है। रमेश बिंदु A से शुरू करता है और दक्षिण दिशा में 20 मीटर चलता है और फिर वह अपनी बाईं ओर मुड़ता है और 32 मीटर चलता है। सोमेश बिंदु P से शुरू करता है और पूर्व दिशा में 20 मीटर चलता है। राजू बिंदु B से शुरू करता है और उत्तर दिशा में 5 मीटर चलता है और फिर वह अपनी बाईं ओर मुड़ता है और 4 मीटर चलता है और फिर वह पुनः अपनी बाईं ओर मुड़ता है और 22 मीटर चलता है।

135. सोमेश की वर्तमान स्थिति के संदर्भ में बिन्दु Q किस दिशा में है?

- A. दक्षिण B. दक्षिण-पूर्व
C. दक्षिण-पश्चिम D. पश्चिम
E. उत्तर-पश्चिम

136. रमेश की वर्तमान स्थिति के संदर्भ में बिन्दु B किस दिशा में है?

- A. उत्तर B. पूर्व
C. उत्तर-पूर्व D. उत्तर-पश्चिम
E. दक्षिण

137. राजू की वर्तमान स्थिति और रमेश की वर्तमान स्थिति के बीच कितनी दूरी है?

- A. 3 मी. B. 5 मी.
C. 13 मी. D. 22 मी.
E. 27 मी.

138. कथन: अगली बार, जब आप ट्रेन से यात्रा करते समय अपना सामान खो देते हैं या दुर्घटना के शिकार होते हैं तो आपको बहुत अधिक भाग दौड़ करने की आवश्यकता नहीं है और जिस चेक कि लिए आपको वर्षों इंतजार करना होता था अब वो आपको घर बैठे मिल जाएगा। दी गई जानकारी से निम्न में से कौन सा अनुमान लगाया जा सकता है? (एक अनुमान कुछ ऐसा है जो सीधे नहीं कहा जाता है लेकिन दी गई जानकारी से अनुमान लगाया जा सकता है।)

- A. ग्राहक के खाते में दावों का त्वरित निपटान किया जाएगा
B. सभी यात्रियों के विवरण आधार कार्ड से जुड़े होंगे
C. नुकसान को रेलवे के माध्यम से किसी भी बीमा कंपनी द्वारा कवर किया जाएगा
D. आई.आर.सी.टी.सी. द्वारा दावे का प्रत्यक्ष निपटान किया जाएगा
E. इनमें से कोई नहीं

निर्देश: नीचे दिए गए प्रत्येक प्रश्न में, दिए गए कथन के बाद कार्यवाई संख्या I और II दी गई हैं। कथन में दी गई जानकारी के आधार पर, आपको कथन में सब कुछ सत्य मानना है और उसके बाद निर्णय लेने की कौन सी कार्यवाई की योजना तर्कसंगत अनुसरण करती है।

IBPS PO & Clerk Combo

टेस्ट सीरीज़

अटेम्प्ट करें

139. कथन:

स्कूल के अधिकारियों द्वारा प्रदान की गई सब्सिडी वाले टिफिन की खपत के बाद स्थानीय स्कूलों में कई स्कूल के बच्चे बीमार पड़ गए हैं।

कार्रवाही:

I. सभी स्कूलों की टिफिन सुविधा तत्काल प्रभाव से बंद कर दी जानी चाहिए।
II. स्कूलों द्वारा प्रदान की गई टिफिन की गुणवत्ता को प्रमाणित करने के लिए सरकार को एक प्रणाली लागू करनी चाहिए।

- A. केवल I अनुसरण करता है।
B. केवल II अनुसरण करता है।
C. या तो I या II अनुसरण करता है।
D. न तो I और न ही II अनुसरण करता है।
E. I और II दोनों अनुसरण करते हैं।

निर्देश: नीचे दिए गए प्रत्येक प्रश्न में, दिए गए कथन के बाद कार्रवाई संख्या I और II दी गई हैं। कथन में दी गई जानकारी के आधार पर, आपको कथन में सब कुछ सत्य मानना है और उसके बाद निर्णय लेने की कौन सी कार्रवाई की योजना तर्कसंगत अनुसरण करती है।

140. कथन :

एक धार्मिक अवसर पर, इलाके के लोगों द्वारा एक बड़ी रैली आयोजित की जाएगी और पुलिस को तदनुसार सूचित किया गया था।

कार्रवाई की योजना:

I. रैली के जुलूस की निगरानी के लिए पर्याप्त पुलिस बल तैनात किया जाना चाहिए।
II. यातायात की भीड़ से बचने के लिए सड़क पर वाहनों को डायवर्जन का सुझाव दिया जाना चाहिए।

- A. केवल I अनुसरण करता है।
B. केवल II अनुसरण करता है।
C. या तो I या II अनुसरण करता है।
D. न तो I और न ही II अनुसरण करता है।
E. I और II दोनों अनुसरण करते हैं।

141. निम्न में से किसने अर्थशास्त्र विज्ञान 2017 में नोबल पुरस्कार जीता है?

- A. डेनियल कहनेमन
B. रिचर्ड एच. थालेर
C. फ्रेडरिक हायेक
D. अमर्त्य सेन
E. इनमें से कोई नहीं

142. ऑस्ट्रिया की राजधानी क्या है?

- A. अदीस अबाबा B. हेलसिंकी
C. वियना D. सियोल
E. नैरोबी

143. उप-राष्ट्रपति वैकेया नायडु ने नई दिल्ली में योगा पर तीसरे अंतर्राष्ट्रीय सम्मेलन का उद्घाटन किया था। वर्ष 2017 के लिए विषय क्या था?

- A. योगा फॉर वेलनेस
B. कनेक्ट द यूथ
C. योगा फॉर नेचुरोपैथी फॉर हालीस्टिक हेल्थ
D. योगा फॉर लाइफस्टाइल डिजीज
E. इनमें से कोई नहीं

144. 'FATF' का विस्तारित रूप क्या है?

- A. Financial Action Task Force
B. Financial Asset Task Force
C. Financial Asset Trade Force
D. Financial Action Trade Force
E. None of the Above

145. शब्द "CAGR" कई बार समाचारों में आता है। इस शब्द का पूर्ण रूप क्या है ?

- A. करंट एवायडिड ग्रोथ रेट (Current avoided growth rate)
B. कम्पाउंड एवरेज ग्रोथ रेट (Compound average growth rate)
C. कम्पाउंड एनुअल ग्रोथ रेट (Compound annual growth rate)
D. कम्पाउंड एक्सेलेरीटेड ग्रोथ रेट (Compound accelerated growth rate)
E. उपरोक्त में से कोई नहीं

146. संजीव स्टालिन किस खेल से संबंधित है?

- A. क्रिकेट B. स्विमिंग
C. कबड्डी D. शूटिंग
E. फुटबॉल
147. 'हैण्ड इन हैण्ड' भारत और _____ के बीच एक संयुक्त सैन्य अभ्यास है।
A. अमेरिका B. जापान
C. रूस D. चीन
E. फ्रांस
148. सामान्यतः वित्तीय/आर्थिक क्षेत्र में प्रयुक्त पद LAF में अक्षर L क्या दर्शाता है?
A. Liquidity B. Least
C. Liabilities D. Long
E. Liquid
149. एक दिन के लिए उधार दी गयी राशि क्या कहलाती है:
A. कॉल मनी B. नोटिस मनी
C. टर्म मनी D. उपरोक्त सभी
E. इनमें से कोई नहीं
150. ब्याज दर जोखिम किस प्रकार का जोखिम है:
A. स्थिर जोखिम
B. दायित्व शुद्ध जोखिम
C. गतिशील जोखिम
D. विविधतापूर्ण जोखिम
E. बाजार जोखिम
151. "उकाई" बांध निम्न में से किस राज्य में है?
A. महाराष्ट्र B. गुजरात
C. उत्तर प्रदेश D. बिहार
E. कर्नाटक
152. यूको बैंक का मुख्यालय कहाँ स्थित है?
A. मुंबई B. नई दिल्ली
C. कोलकाता D. चेन्नई
E. बेंगलुरु
153. 'NACH' में 'A' क्या है?
A. Application B. Arbitrage
C. Automated D. Adjustment
E. Assets
154. भारतीय रिज़र्व बैंक नोट मुद्रण (प्रा) लिमिटेड (बीआरबीएनएमपीएल) की स्थापना भारत में बैंक नोट का उत्पादन बढ़ाने के उद्देश्य से

- भारतीय रिज़र्व बैंक द्वारा अपने संपूर्ण स्वामित्वाधीन उसकी सहायक कम्पनी के रूप में 3 फरवरी, 1995 को हुई थी। भारतीय रिज़र्व बैंक नोट मुद्रण (प्रा) लिमिटेड 2 प्रेस संभालती है। एक प्रेस मैसूर में स्थित है और दूसरा _____ में स्थित है।
A. बेंगलुरु B. मदुरै
C. सालबोनी D. कोच्चि
E. दुर्गापुर
155. 'MPC' में 'P' क्या दर्शाता है?
A. Policy B. Public
C. Partnership D. Payment
E. इनमें से कोई नहीं
156. किस संस्था ने किसान क्रेडिट कार्ड पेश किया?
A. नाबार्ड B. के.सी.सी.
C. जी.सी.सी. D. आरबीआई
E. इनमें से कोई नहीं
157. गैर-बैंकिंग वित्तीय निगम की कार्यप्रणाली और संचालन का नियमन कौन करता है?
A. सेबी B. आर.बी.आई.
C. वित्त मंत्रालय, भारत सरकार
D. इरडा
E. उपरोक्त में से कोई नहीं
158. CASA का पूरा नाम क्या है?
A. पूंजी खाता बचत खाता
B. चालू खाता बचत खाता
C. पूंजी पर्याप्तता प्रभु खाता
D. चालू खाता सोवियत खाता
E. इनमें से कोई नहीं
159. किस शहर ने शंघाई सहयोग संस्थान समिति 2017 की मेजबानी की?
A. दुशांबे B. अस्ताना
C. बीजिंग D. ताशकंद
E. उपर्युक्त में से कोई नहीं
160. पुरुष एकल वर्ग में चीन ओपन खिताब 2017 का विजेता कौन है?
A. केई निशिकोरी
B. एंडी मरे
C. नोवाक जोकोविच

- D. राफेल नडाल
E. इनमें से कोई नहीं
161. वर्तमान में नीति आयोग के उपाध्यक्ष कौन हैं ?
A. राजीव कुमार
B. विनोद पौल
C. अरविंद पनगडिया
D. संजीव कुमार
E. सुदीप वर्मा
162. ELSS (इएलएसएस) का अर्थ है _____.
A. एंट्री लोड शेयर्स स्कीम (Entry Load Shares Scheme)
B. एंट्री लोड स्टार्टिंग शेयर्स (Entry Load Starting Shares)
C. इक्विटी लिंकड सेविंग्स स्कीम (Equity Linked Savings Scheme)
D. इक्विटी लिंकड शेयर्स सोल्ड (Equity Linked Shares Sold)
E. एम्प्लॉयी लेवर सैलरी स्कीम (Employee Level Salary Scheme)
163. निम्नलिखित में से कौनसा एक क्रेडिट कार्ड एसोसियेशन है?
A. इंडिया कार्ड B. मास्टर कार्ड
C. SBI कार्ड D. सिटी बैंक कार्ड्स
E. BOB कार्ड
164. एनआईएसएम ____ द्वारा स्थापित एक सार्वजनिक ट्रस्ट है।
A. भारतीय रिजर्व बैंक
B. सेबी C. नाबार्ड
D. IRDAI E. इनमें से कोई नहीं
165. बेंगाज़ी बंदरगाह किस देश में स्थित है ____।
A. ईरान B. इराक
C. लीबिया D. कतर
E. दिए गए विकल्पों से अन्य
166. 'GDR' एक विदेशी कंपनी में शेयरों के लिए एक से अधिक देश में जारी एक बैंक प्रमाण पत्र है।

- A. Ratio B. Receipt
C. Revenue D. Risk
E. Reserve
167. वरिष्ठ पेंशन बीमा योजना किसके माध्यम से कार्यान्वित की जाती है?
A. भारतीय जीवन बीमा निगम
B. न्यू इंडिया एश्योरेंस
C. एसबीआई लाइफ इश्योरेंस कंपनी
D. पीएनबी मेटलाइफ इंडिया इश्योरेंस कंपनी
E. कर्मचारी भविष्य निधि संगठन
168. 'SFM' में 'M' का पूर्ण रूप क्या है?
A. Mobile B. Money
C. Magnetic D. Messaging
E. Module
169. बहुपक्षीय निवेश गारंटी एजेंसी (Multilateral Investment Guarantee Agency) का मुख्यालय कहाँ स्थित है?
A. न्यूयॉर्क B. जिनेवा
C. ब्रसेल्स D. रोम
E. वाशिंगटन डी.सी.
170. सरकार ने भविष्य निधि निकासी पर लगाए जाने वाले कर की सीमा मौजूदा सीमा 30000 रुपये से बढ़ाकर कितनी करने के बारे में अधिसूचना जारी की है?
A. 40000 रुपये B. 50000 रुपये
C. 80000 रुपये D. 1 लाख रुपये
E. 2 लाख रुपये
171. प्रधान मंत्री मुद्रा योजना (पीएमएमवाई) के तहत गारंटी योजना का नाम क्या है?
A. CGFMU B. CGTMSE
C. CGMSE D. CGMTF
E. NCGTC
172. 'NAFCC' में 'CC' का क्या मतलब है?
A. Climate Change
B. Cash Credit
C. Closed Capital
D. Complementary currency
E. Credit Card
173. ऋणमुक्ति इंगित करता है

- A. व्यय परिसंपत्तियाँ
B. व्यर्थ परिसंपत्तियाँ
C. अमूर्त परिसंपत्तियाँ
D. फर्जी परिसंपत्तियाँ
E. इनमें से कोई नहीं
174. बी.डी. मिश्रा किस राज्य के गवर्नर हैं?
A. त्रिपुरा B. अरुणाचल प्रदेश
C. हरियाणा D. नागालैंड
E. उत्तर प्रदेश
175. बलफ्राम राष्ट्रीय उद्यान भारत के किस राज्य में स्थित है?
A. मेघालय B. हिमाचल प्रदेश
C. झारखंड D. पंजाब
E. ओडिशा
176. अचानकमार वन्यजीव अभयारण्य किस राज्य में स्थित है?
A. झारखंड B. छत्तीसगढ़
C. बिहार D. मध्य प्रदेश
E. उड़ीसा
177. केंद्रीय कृषि मंत्री राधा मोहन सिंह का निर्वाचन क्षेत्र क्या है?
A. हाजीपुर, बिहार
B. पटना साहिब, बिहार
C. पुरवी चंपारण, बिहार
D. वैशाली, बिहार
E. दरभंगा, बिहार
178. जेआरडी टाटा खेल स्मारक किस शहर में स्थित है?
A. जमशेदपुर B. भोपाल
C. कोलकाता D. पटना
E. लखनऊ
179. धीरू भाई अंबानी सोलर पार्क किस राज्य में स्थित है?
A. राजस्थान B. गुजरात
C. तमिलनाडु D. महाराष्ट्र
E. उत्तर प्रदेश
180. भारतीय चावल अनुसंधान संस्थान का मुख्यालय _____ में स्थित है।

- A. हैदराबाद B. कोलकाता
C. चेन्नई D. कोच्चि
E. लखनऊ
181. क्रिप्टोकॉन्सी के संदर्भ में निम्नलिखित कथनों पर विचार करें और गलत कथन की पहचान करें:
A. एक क्रिप्टोकॉन्सी मूल रूप से एक डिजिटल संपत्ति है
B. यह लेन-देन की सुरक्षा को सुनिश्चित करने हेतु क्रिप्टोग्राफी का उपयोग करती है
C. यह नकदी से अलग है चूंकि क्रिप्टोकॉन्सी का कोई भौतिक रूप नहीं है
D. एक क्रिप्टोकॉन्सी केंद्रीय बैंक है जो नई मुद्रा जारी करता है
182. वित्तीय क्षेत्र में बार-बार प्रयुक्त पद "Underwriting" का अर्थ है -----
A. आस्तियों का अल्प मूल्यांकन
B. शुल्क प्राप्ति के लिए जोखिम उठाने की क्रिया
C. यह गारंटी देना कि ऋण अशोधशय नहीं होगा
D. IPO फ्लोट करने के लिए अनुमति की क्रिया
E. इनमें से कोई नहीं
183. हाल ही में निधन हो चुके लख टंडन किस क्षेत्र से जुड़े हुए हैं?
A. अर्थशास्त्री B. फिल्म
C. खेल D. लेखक
E. राजनीतिज्ञ
184. एशियाई विकास बैंक बोर्ड ऑफ गवर्नर की 50 वीं बैठक का आयोजन किस देश में किया जायेगा?
A. भारत B. चीन
C. फिलीपींस D. जापान
E. सिंगापुर
185. देश में ऑनलाइन स्थगन शुरू करने के लिए पहला राज्य कौन सा राज्य बन गया?
A. तमिलनाडु B. बिहार
C. केरला D. गुजरात
E. राजस्थान

186.सुप्रीम कोर्ट ने देश भर में जेल सुधारों की जाँच करने और उनसे निपटने के उपाय सुझाने के लिए किस समिति का गठन किया था?

- A. हर्ष वर्धन समिति
- B. अमिताव राय समिति
- C. सूर्य प्रकाश समिति
- D. राजीव कुमार समिति
- E. इनमें से कोई नहीं

187.निम्न में से किस प्रकार के जोखिमों का उपयोग कैपिटल टू रिस्क (भारिता) एसेट्स रेशो (सी.आर.ए.आर) की गणना में किया जाता है?

- I. ऑपरेशनल जोखिम
 - II. बाजार जोखिम
 - III. क्रेडिट जोखिम
- दिए गए विकल्पों में से सही विकल्प का चयन करें:
- A. केवल I
 - B. केवल I एवं II
 - C. केवल III
 - D. केवल I एवं III
 - E. सभी I, II एवं III

188.निम्न में से कौनसी क्रेडिट रेटिंग एजेंसी ने स्थायी बाजार में FPI की प्रस्तुती को मापने हेतु एक इंडेक्स (निर्देशिका/क्रम-सूची) प्रारम्भ की है?

- A. CRISIL
- B. ICRA
- C. ONICRA
- D. CIBIL
- E. SMERA

189.सरकार के मुताबिक, विदेशी निवेश संवर्धन बोर्ड (एफआईपीबी) के उन्मूलन के बाद, अब मंत्रालयों को आवेदन के कितने दिन और किसी भी अस्वीकृति के भीतर एफडीआई प्रस्तावों पर फैसला करना होगा?

- A. 30
- B. 20
- C. 90
- D. 15
- E. 60

190.रिजर्व बैंक ऑफ इंडिया द्वारा घरेलू प्रणालीगत रूप से महत्वपूर्ण बैंकों (डी-एसआईबी) सूची में कौन सा बैंक पहला बैंक बन गया?

- A. आईसीआईसीआई बैंक
- B. एसबीआई
- C. एचडीएफसी बैंक
- D. एक्सिस बैंक
- E. बैंक ऑफ बड़ौदा

ANSWERS

1. Ans. C.

The passage revolves around telecommuting but builds the structure in such a way that it emphasizes on the work-from-home facility in the domain. It builds up the case that explains the good and bad of the same and how it has shaped the habits of the workforce and has impacted the overall growth.

2. Ans. D.

It can be inferred from paragraph 6 in which it is stated that being allowed to work outside the office is good for both workers and employers. Working outside the office allow employees to have better work-life balance and improves their health and wellness, according to the report. It also saves them time and money.

Saving time and money is, though, an indirect addition to the income but since it hasn't been explicitly stated, it will not be considered as the case. Hence, option D is the correct answer.

3. Ans. A.

Fall-out means effect/ impact/ consequence. Red-blooded means dynamic.

Options B and E don't mention any consequence; hence they can be easily eliminated.

Options C and D don't mention a consequence which is dynamic; hence eliminated.

Brunt means impact. Option A is synonymous with the question statement.

Hence, option A is the correct answer.

4. Ans. C.

A pigeonhole is a compartment and here, refers to the cubicle working system of offices. 'To extend the roots beyond the pigeonhole' means to expand its working conditions beyond the in-office environment and infrastructure. This has, in the passage, been done in the form of 'work-from-home' facility. Hence, option C is the correct answer.

5. Ans. D.

(i) and (iii) can be inferred from the following statements of the passage, 'The Great Recession also played a role. "We saw a dramatic increase in the types of jobs that employers were hiring for that allowed telecommuting and other flexibility," said Sutton Fell. Far-flung working has become more commonplace, specifically in the mortgage and real estate industry, human resources and recruiting, and accounting and finance. Each industry saw remote job listings flourish more than 20% last year. Employers in the Northeast, particularly in New England and Mid-Atlantic regions, are the most likely to offer flexible workplace options, the report found. "The middle class norm changed from one parent working and one staying at home to two working parents being more common and growth in single-parent families are big factors driving telecommuting to save time when and where you can," said Sutton Fell.' Hence, option D is the correct answer.

6. Ans. B.

The advantages can be inferred from the last paragraph which states, 'Telecommuting full time brings in more than \$4,000 in savings each year thanks to reduced expenses on things like gas, parking and public transit costs and dry cleaning. By not having to go into the office every day, workers gain back the equivalent of 11 days per year. Employers also see savings from allowing flexible scheduling. Allowing a worker to telecommute half the time can save an employer more than \$11,000 a year. "It's a benefit when it comes to recruiting and retentions and offering competitive advantages with globalisation and the efficiency of being a forward-looking company," said Sutton Fell.' The mention of other options as mutual benefit can't be traced in the given passage.

Hence, option B is the correct answer.

7. Ans. A.

The answer can be inferred from the following statements of the passage, "There is still this stigma associated with an antiquated view that telecommuting is just a work-from-home mom thing or for lower level jobs or not as dedicated workers," said Sutton Fell. "This is a very professional and viable option and it's not going anywhere."

Call in question means to argue or challenge. A snap means something that can be done easily or is feasible. Option A means that the subject opposes the statement and is of the perspective that telecommuting is feasible and gender-neutral and is beneficial for the entire workforce.

To back something means to support something; it is clear from the quoted statements that the author calls the societal view about telecommuting a stigma and says that it is, instead, a feasible option which is meant to stay. Hence, option B can be eliminated. To keep up with something means to advocate/ support something; it can also be eliminated on the same grounds as option B.

To stick by the statement also means to advocate something; hence it can also be eliminated.

Hence, option A is the correct answer.

8. Ans. D.

Statements 2 and 5 are both grammatically correct and carry the same meaning. Statement 2 states that Consumerism takes place when under the influence of advertising and marketing, wants to get created among people. The same idea is stated in statement 5. Thus, option D is correct.

Let's look at the errors in the other statements:

1) "Individualistic" is an adjective, so is "increased" in the given context. But an adjective cannot modify an adjective and we need an adverb in its place. Therefore, "increasingly" should be written.
3) Here the usage of the word "consumers" is incorrect as it refers to a group of people who consume. The consumers cannot be called "a character-cultivating way of life". Hence, the

abstract noun "consumerism" should be used.

4) The statement here talks about what parents should do in general. Hence, the verb "teach" should be in the simple present tense instead of present perfect continuous. So, "have been teaching" should be replaced by "teach".

9. Ans. E.

Statements 3 and 4 are grammatically correct and similar in meaning. Statement 3 talks about how India's large geographical extent houses several different religions which in turn has led to several different festivals being celebrated all over the country and acts as a shining example of unity in diversity. Statement 4 supports this same sentiment in different words. Let's look at the errors in the other statements:

1. 'Festivals' being plural should be followed by 'are' to maintain subject-verb agreement instead of 'is'.

2. The determiner 'much' is used with singular uncountable nouns. Since 'diwali' is a singular countable noun, the correct determiner to be used is 'most'.

5. As stated earlier 'much' is used with singular uncountable nouns. The correct determiner to be used here is 'many' as 'festivals' is a plural noun.

10. Ans. B.

Sentences 2 and 3 are grammatically correct and have similar meaning. Both of them are conveying the fact that the purpose of creative advertisement is to just entertain the viewer. But comparative advertisement is much more aggressive than that. Let's look at the errors in the other statements:

Sentence 1: In this sentence two words-quiet and soul, are used incorrectly. Quiet means making little or no noise. Since an emphasis is being put on how different the two types of advertising are, the correct that should have been used is 'quite'. Quite means 'to a certain or fairly significant extent or degree'. 'Soul' means the spiritual or immaterial part of a human being or animal, regarded as immortal. Since we need an adjective for 'purpose', the correct word

that should have been used here is 'sole', which means one and only. Sentence 4: 'Might' indicates that the action(entertaining) is a future event. When we state future progressive events as such, we use *be + ing-verb*. Also, when pointing out one among many, the noun for many part (form) should be in plural form. So, it should be 'forms' not 'form'.

Sentence 5: Even though is used in the sense of 'despite of'. Even though is used generally used when we are conceding a surprising outcome. 'While' is used when two actions are happening simultaneously. Since two conditions are being compared without any conceding, we should use 'while' instead of 'even though'.

Hence, the correct answer is B.

11. Ans. A.

Sentences 1 and 4 are grammatically correct and have similar meaning. Both of them are conveying the fact that the rest of the country knows very little about the flood victims of the north eastern states, who have been displaced from their homes due to severe floods. Let's look at the errors in the other statements:

Sentence 2: When we say we know something, we know facts or details. Both of them are countable nouns. So, we should use 'little' instead of 'less' as less is used for uncountable nouns. Sentence 3: 'a' is an article for singular nouns. Since 'little' is definitely more than one, using 'a' is wrong. Sentence 5: 'Misplaced' means placing something in the wrong position. It can happen unknowingly. The homeless flood victims are not exactly at a wrong place. They are most probably at a relief centre. The correct word that should've been used is 'displace', which means forced to move.

Hence, the correct answer is A.

12. Ans. E.

All the three statements use the word "hamper" in the correct form. In the first and the second sentence, the word has been used as a verb in the present and the past tense respectively. "Hamper" means to cause hindrance. The third

sentence uses the word as a noun which means a basket or a container. The word fits appropriately in the given question. Since the word has been used correctly in all the sentences, option E is the correct answer.

13. Ans. C.

The numerical 100 is written as century in cricket and is used to refer to 100 years. In sentence 1 and 2 it makes perfect sense.

In sentence 3 however, the word must be sanctuary which refers to a nature reserve for wild animals. The correct answer is option C.

14. Ans. E.

The word Date carries several meanings:

1. The day of the month or year as specified by a number.
2. A social or romantic appointment or engagement.
3. Reveal someone or something as being old-fashioned.

Among these, the meaning given in 1, makes statement 2 correct. The one given in 2, makes statement 1 correct and the one given in 3, makes statement 3 correct. Thus, option E is the correct answer.

15. Ans. B.

Audacity means aggressive boldness or unmitigated effrontery. Annoy means disturb, especially by minor irritations.

Assort means to distribute or to classify. Amuse means occupy in an agreeable, entertaining or pleasant fashion. B-D are antonyms.

16. Ans. C.

Blame means attribute responsibility to. Incarcerator to confine, imprison. Blimey British informal, used to express surprise.

Inculcate suggest that someone is guilty.

A-D are synonyms.

17. Ans. E.

Permit means consent to, give permission.

Plough (verb) turn up the earth of (an area of land) with a plough, especially before sowing.

Bar means expel, as if by official decree.

Beacon means a fire (usually on a hill or

tower) that can be seen from a distance.
A-C are antonyms.

18. Ans. A.

Crave means plead or ask for earnestly.
Abjure means retract, or formally reject or renounce.
Exceed means go beyond what is allowed or stipulated.
Crass means without sensitivity.
A-B are antonyms.

19. Ans. D.

The sentence is about a newspaper journey of 139 years. During these years the newspaper has changed with upcoming trends by adapting and embracing the new technological changes yet it never compromised with its core value. The first word must mean 'the whole'. The second word must mean 'to accept and adapt'. Therefore, option D is apt. 'Entirety' means the whole of something and embraces means to an act of accepting something willingly or enthusiastically.

20. Ans. A.

The first blank is followed by the word "studies", and no other word but "review" can fit before it while conveying a correct sense. In order for a condition to be dealt with, it needs to be identified first. Hence, option A is the correct answer.

21. Ans. A.

Dispel- to make (a doubt, feeling, or belief) disappear.
The term, hectic external engagements shows the PM's hard work and is a positive point. The segment after the blank (Chief Minister with little diplomatic experience could not make it to the high table...) points out a negative thing about the PM. So, the positive point that prevails in the present would negate a negative point of the past. Hence, either 'dispel' or 'dismiss' can fit in the first blank.

A visa cannot be agreed to someone, hence option D gets eliminated. "Deny" fits appropriately in the second blank. Hence, option A is the correct answer.

22. Ans. A.

The second part of the sentences conveys the idea that seeing the thrust of the startup with respect to employment, app download, presence in cities, the founder

would start the project. the only word that will fit in the blank and make the sentence grammatically correct is chances. though the word probabilities convey the meaning same as 'chances', but given the choice of diction, we should choose chances.

The first part of the sentence conveys the idea that the idea of the startup founder is expected to bring in positive results. Disruptive means innovative or groundbreaking.

Hence the correct answer is option A.

23. Ans. D.

The given sentence talks about the mixed responses given by brokerage houses. Since "saying" has been used once in the sentence, "adding" can be used as a connector to state another response. The usage of "saying" will make the sentence redundant, while "speaking" would be grammatically incorrect. "Awaited" fits appropriately in the second blank, indicating that there is still no clarity excise duty exemption. Thus, option D is the correct answer.

24. Ans. B.

The statement tries to compare the salaries of the soldiers with those of the other professionals and focuses on the disparities in the same. Corresponding to the context 'disproportionate' and 'compensations' are the most suitable words. Disproportionate highlights the disparity and compensation lays stress on the subject being discussed. So, option B is correct.

25. Ans. D.

Out Of all the available options, only 'improvement' and 'measures' satisfy the context of the sentence by replacing the irrelevant words in the sentence. The sentence means that the recordings of the financial data showed that the improvement in the economy has little relation with the measures taken by the financial experts. So, option D is correct.

26. Ans. C.

The sentence talks about a report, thus only 'stated' and 'proclaimed' are possible here. Now for the second part, 'undue presentation' is not a proper phrase, which automatically cancels 'proclaims'. So, option C is correct.

27. Ans. E.

The statement makes perfect sense in itself. So, option E is correct.

28. Ans. E.

Statement 1 should be the opening sentence of the series. It lays down the theme of the passage which is the successful running of the Indian state and society being dependent on the ideals of secularism. It is followed by A which highlights the existing situation of secularism coming under the scanner and questions being raised against its credibility. B elaborates on what is stated in statement A. The unpleasant situation being noticed for the first time ever since independence is the idea of a Hindu Rashtra being openly mooted. C and 2 form a pair. C states that the Supreme Court has expressed its 'concerns' with the rising threat to secularism. The issue mentioned here is the apprehension with respect to the continuation of the successful working of Secularism. Statement 2 lays down the actual 'concern' around which the Supreme Court has expressed itself, i.e. the threat and danger of losing the ideals of secularism. Also, the usage of the pronoun "it" indicates that the Supreme Court is being talked about. Hence, the correct sequence is 1ABC2 and option E is the correct answer.

29. Ans. B.

The given passage talks about how the diversity in India affects the political scenario in the country. This concept of diversity is well described in statement 1 making it the introductory sentence of the passage. And it leads to how states contribute to the political make up in the country. This makes statement 2 the second sentence of the passage. Hence, the correct sequence is 12ABC and option B is the correct answer.

30. Ans. E.

The passage is about river drainage system. Sentence 1 should act as the introductory sentence as it defines what is a 'drainage system' while statement 2 should act as the concluding sentence as it points out the several tasks performed by the drainage system as mentioned in statement C.

Hence, the correct sequence is 1ABC2 and option E is the correct answer.

31. Ans. E.

The theme of the paragraph is the Nobel prize literature committee which is having a public meltdown. The paragraph should start with statement A only as it introduces the academy as well as provides information about the committee. Hence, options A, B and C are eliminated. Statement C talks about the scandal. it says that a dozen if women have framed charges against the photographer. 2 talks about the remaining members. Naturally, statement 2 follows statement C. Therefore, statement 2 comes next and option E is the apt answer.

32. Ans. B.

From '20 countries have already called for a total ban on killer robots,' one can consider that countries might have decided to boycott the upcoming meeting on autonomous weapons. This option can be used. 'Even though' is used to show contrast and means 'despite the fact that.' This option only fits with the first sentence and does not help in connecting the two sentences. From the second sentence, one can use option III to connect the sentences. Therefore, option B is the apt answer.

New statement:

The boycott comes ahead of a United Nations meeting in Geneva next week on autonomous weapons, and more than 20 countries have already called for a total ban on killer robots. While support builds for an outright ban on autonomous weapons, there is a United Nations meeting in Geneva next week on autonomous weapons, since more than 20 countries have already called for a total ban on killer robots.

33. Ans. D.

All the options can be used to connect the sentences. Therefore, option D is the apt answer.

New statements:

If you've considered whitening your teeth, you may already know the professional teeth whitening cost can be high — much more expensive than at-home alternatives, but in-office teeth

whitening is one of the safest and most effective whitening methods. Teeth whitening doesn't have to be expensive while you may already know the professional teeth whitening cost can be high — much more expensive than at-home alternatives, but in-office teeth whitening is one of the safest and most effective whitening methods. If you're looking for an alternative to professional bleaching in a dental office as you may already know the professional teeth whitening cost can be high — much more expensive than at-home alternatives so in-office teeth whitening is one of the safest and most effective whitening methods.

34. Ans. C.

Option I: Euphoria refers to a feeling or state of intense excitement and happiness. It makes sense as the proposed resolution of impeachment of the Chief Justice of India will bring forward issues that directly have an effect, especially a negative one, on the independence of the judiciary. Option II: 'Some safeguards' will make no sense in the context of the sentences. Option III: It says that a fearless judge is the fundamental principles on which an independent judiciary is based. So, it can be used to connect sentences. Therefore, option C is the apt answer.

New statements:

The euphoria in some circles over a proposed resolution of impeachment of the Chief Justice of India is a matter of grave concern, for it brings to the fore issues that directly impinge on the independence of the judiciary. Since a fearless judge is the bedrock of an independent judiciary, a proposed resolution of impeachment of the Chief Justice of India is a matter of grave concern, for it brings to the fore issues that directly impinge on the independence of the judiciary.

35. Ans. A.

We can clearly decipher from the statements that quotas determine the size of funds at the disposal. The countries having higher quotas or powerful countries influence the funds to be lent. The developing countries are

demanding a greater share in quotas. Option II as well as III make no sense in the context of the statements.

New statement:

Quotas determine the size of contingency funds at the disposal of the IMF to lend to countries in need of help, as well as the power of individual countries to influence lending decisions and tap into the funds themselves, though developing countries hold less than half the overall quota at the moment, with their rapidly increasing economic heft they have demanded a greater share.

36. Ans. C.

The passage states the problems and cyber threats to which every organization is exposed to. It mentions the importance of ethical hacking and the ways in which the ethical hackers deal with them. The dire need of regularly checking the security of organizations is increasing with time. Thus option C is the correct answer.

37. Ans. A.

It can be well inferred from the passage that a successful ethical hacker is one who can think from the perspective of a hacker and create better security there. If one fails to think like a malicious person one would never be able to create proper security there. Thus option A is the correct answer.

38. Ans. B.

With the advent and progress of technology the problem of hacking too increased. Thus the major reason that contributed to the problem of hacking is technology. Option B is the correct answer.

39. Ans. E.

The most important step to protect the organization is that the hackers should be given proper authority to access the privacy of the organizations. Unauthorized access is the most harmful thing done to the organization. Thus option E is the correct answer.

40. Ans. C.

It can be well inferred from the passage that the ethical hackers do not have any negative purpose and want to enhance the security of organizations whereas the normal hackers have an ill motive and

want to gain personal benefits causing harm to others. Thus option C is the correct answer.

41. Ans. A.

If Z is positive then only Z^7 is positive
So, statement I alone is sufficient to answer the question

If Z is positive then Z^8 is positive

If Z is negative then Z^8 is positive
So, statement II alone is not sufficient to answer the question

42. Ans. D.

$$\frac{1}{a} + \frac{1}{b} = \frac{6}{5}$$

Here, we have 2 unknowns and one equation

So, statement I alone is not sufficient to answer the question

$$a \times b = 5$$

Here, we have 2 unknowns and one equation

So, statement II alone is not sufficient to answer the question

On combining both the statements
So, now we have two equations and two unknowns

So, option (d) is the correct answer.

43. Ans. E.

18 women can complete the same piece of work in 24 days

Here we don't know the capacity of work done by men

So, statement I alone is not sufficient to answer the question

28 children can complete the same piece of work in 56 days.

Here we don't know the capacity of work done by men

So, statement II alone is not sufficient to answer the question

On combining both the statements we still cannot determine the capacity of work done by men

So, option (e) is the correct answer.

44. Ans. E.

The urn contains 10 yellow and 8 green balls

Here we don't know the number of red balls

So, statement I alone is not sufficient to answer the question

The urn contains all colored balls
Here we don't know the number of red balls

So, statement II alone is not sufficient to answer the question

On combining both the statements we still cannot determine the number of red balls.

So, option (e) is the correct answer.

45. Ans. B.

Statement

I

Let's say if $3w=3$, then $w=1$, an integer.
But if let's say, $3w=5$ then $w=5/3$, is not an integer.

So, with Statement I we cannot determine the answer.

Statement

II

$2w=2,4,6,8...$ any even number, in this case w is always an integer.

So, case II alone can answer it.

So, option (b) is the correct answer.

46. Ans. C.

Given, total girls = 420

Total boys = 810

Let the number of boys in Xavier = x

So, the number of girls in Xavier = $\frac{2}{3}x$

Let the number of boys in Vijaya = y

So, the number of girls in Vijaya = $\frac{2}{5}y$

Given,

$$x + y = 810$$

$$\frac{2}{3}x + \frac{2}{5}y = 420$$

$$\text{So, } \frac{x}{3} + \frac{y}{5} = 210$$

$$\text{So, } \frac{810-y}{3} + \frac{y}{5} = 210$$

$$270 - \frac{y}{3} + \frac{y}{5} = 210$$

$$60 = \frac{2y}{15}; y = 450$$

So,

So, the number of boys in Vijaya = y = 450

So, the number of girls in Vijaya =

$$\frac{2}{5}y = 180$$

Let the number of boys in Xavier = x =

$$810 - y = 810 - 450 = 360$$

So, the number of girls in Xavier =



IBPS PO & Clerk Combo

टेस्ट सीरीज़

अटेम्प्ट करें

$$\frac{2}{3}x = 240$$

$$180 = \frac{x}{100} \times 240$$

$$x = \frac{180 \times 100}{240} = 75$$

So, option (c) is the correct answer.

47. Ans. D.

The number of boys in Vijaya = 450

And, the number of girls in Vijaya =

180

Also, the number of boys in Xavier = 360

And, the number of girls in Xavier =

240

Number of girls in X college =

$$640 - 240 = 400$$

Total students in Xavier = 600

So, total students in X =

$$600 \times \frac{125}{100} = 750$$

Number of boys in X college = 750 - 400 = 350

So, option (d) is the correct answer.

48. Ans. D.

The number of boys in Vijaya = 450

And, the number of girls in Vijaya =

180

Also, the number of boys in Xavier = 360

And, the number of girls in Xavier =

240

So, required difference = 630 - 600 = 30

So, option (d) is the correct answer.

49. Ans. B.

The number of boys in Vijaya = 450

And, the number of girls in Vijaya =

180

Also, the number of boys in Xavier = 360

And, the number of girls in Xavier =

240

Number of boys in Y College =

$$\frac{13}{9} \times 450 = 650$$

Number of girls in Y College =

$$180 \times \frac{80}{100} = 144$$

Total students = 650 + 144 = 794

So, option (b) is the correct answer.

50. Ans. E.

The number of boys in Vijaya = 450

And, the number of girls in Vijaya =

180

Also, the number of boys in Xavier = 360

And, the number of girls in Xavier =

240

Required percentage =

$$\frac{450 - 360}{360} \times 100 = 25\%$$

So, option (e) is the correct answer.

51. Ans. C.

$$15M * x = 21W * (x-4)$$

$$35M * y = 63W * (y-4)$$

$$\text{So, } 21(x-4) = 63(y-4)$$

$$x = 3y - 8$$

$$15x = 35y$$

$$3x = 7y$$

$$\text{So, } y = \frac{3x}{7}$$

$$x = 3 \times \frac{3x}{7} - 8$$

So,

$$\frac{2x}{7} = 8; x = 28$$

So, option (c) is the correct answer.

52. Ans. B.

Let, CP of B = x

CP of A = 2x

Total CP = 3x

$$MP = 3x \times \frac{120}{100} = 3.6x$$

Discount = 9

$$SP = 3.6x - 9$$

$$\text{Profit\%} = \frac{3.6x - 9 - 3x}{3x} \times 100 = 17$$

$$\frac{3.6x - 9}{3x} = 1.17$$

$$3x$$

So, x = 100

CP of article A = 200

So, option (b) is the correct answer.

53. Ans. D.

Two cases are possible

$$\frac{4C \times 5C}{5C}$$

1)

$$2) \frac{{}^4C_3 \times {}^5C_2}{{}^9C_5}$$

$$\text{Required Probability} = \frac{{}^4C_3 \times {}^5C_2}{{}^9C_5} + \frac{{}^4C_2 \times {}^5C_3}{{}^9C_5}$$

$$\frac{\left(1 \times \frac{5}{1} + \frac{4}{3} \times \frac{3}{2} \times \frac{2}{1} \times \frac{5}{2} \times \frac{4}{1}\right)}{\frac{9}{5} \times \frac{8}{4} \times \frac{7}{3} \times \frac{6}{2} \times \frac{5}{1}} = \frac{5 + 40}{126} = \frac{45}{126}$$

So, option (d) is the correct answer.

54. Ans. B.

Let the length of the train = L

And, the length of the platform = P

$$\text{So, } 25 \times \frac{5}{18} = \frac{L+P}{18}$$

$$L+P = 125$$

$$\text{And, } 30 \times \frac{5}{18} = \frac{L}{12}$$

$$L = 100$$

$$P = 25$$

$$\text{Required difference} = 100 - 25 = 75$$

So, option (b) is the correct answer.

55. Ans. D.

Satish: Bhavya: Abhishek

$$15000 \times 12: 18000 \times (12-x): 24000 \times$$

$$(12-x) = 10: 9: 12$$

$$\text{So, } \frac{15000 \times 12}{(18000 \times (12-x))} = \frac{10}{9}$$

$$90 = 120 - 10x$$

$$10x = 30; x = 3$$

So, option (d) is the correct answer.

56. Ans. B.

Let the age of Sakshi 6 years ago = x

$$\text{Present age of Sakshi} = \frac{5}{4}x$$

$$\text{So, } \frac{5}{4}x = x + 6$$

$$\text{So, } x = 24$$

$$\text{So present age of Sakshi} = 30$$

$$\text{Present age of her son} = \frac{1}{5}x = \frac{30}{5} = 6$$

$$\text{Age of Sakshi after 10 years} =$$

$$\frac{5}{4}x + 10 = 40$$

$$\text{Age of her son after 10 years} = 16$$

$$\text{So, required ratio} = \frac{40}{16} = \frac{5}{2}$$

So, option (b) is the correct answer.

57. Ans. D.

$$\text{SI in scheme A} = \frac{18000 \times 2 \times 15}{100} = 5400$$

CI in scheme B =

$$15000 \left(\left(\frac{118}{100} \times \frac{118}{100} \right) - 1 \right) = 5886$$

$$\text{Required difference} = 5886 - 5400 = 486$$

So, option (d) is the correct answer.

58. Ans. E.

In 1st alloy,

Copper = 40%

Aluminum = 60%

So, ratio = 2: 3

In 2nd alloy,

Ratio = 2: 7

Final mixture ratio = 5: 3

So, total amount of copper =

$$\frac{2}{5} \times 5x + \frac{2}{9} \times 3x = 2x + \frac{2}{3}x = \frac{8x}{3}$$

And, total amount of aluminum =

$$\frac{3}{5} \times 5x = 3x$$

So, required percentage =

$$\frac{\left(\frac{3x - \frac{8x}{3}}{3} \right) \times 100}{\frac{8x}{3}} \times 100 = \frac{9x - 8x}{8x} \times 100 = \frac{100}{8} = \frac{25}{2} = 12.5\%$$

So, option (e) is the correct answer.

59. Ans. C.

Relative speed of train = 15

Distance between them = 20 km

Time taken to cover that distance =

$$\frac{20}{15} = \frac{4}{3} \text{ hours}$$

So, they will collide in 80 minutes

So, distance covered in 79 minutes =

$$15 \times \frac{79}{60} = \frac{79}{4}$$

So, distance left =

$$20 - \frac{79}{4} = \frac{80 - 79}{4} = \frac{1}{4} \text{ km}$$

So, option (c) is the correct answer.

60. Ans. A.

$$\pi r^2 h = 616m^3$$

$$\text{And, } 2\pi rh = 352m^2$$

$$\text{So, } \frac{\pi r^2 h}{2\pi rh} = \frac{616}{352}$$

$$\text{So, } \frac{r}{2} = 1.75$$

$$\text{So, } r = 3.5$$



IBPS PO & Clerk Combo

टेस्ट सीरीज़

अटेम्प्ट करें

$$\pi r^2 h = 616m^3$$

$$\text{So, } h = \frac{616}{\pi r^2} = 16$$

$$\text{TSA} = 2\pi r(h + r)$$

$$\text{TSA} = 2 \times \frac{22}{7} \times 3.5(16 + 3.5) = 429 m^2$$

So, option (a) is the correct answer.

61. Ans. B.

Let the amount of mixture taken from 1st allow = x

And, the amount of mixture from the second allow = y

$$\text{So, } \left[\frac{\left(\frac{x}{3} + \frac{2y}{5} \right)}{\frac{2x}{3} + \frac{3y}{5}} \right] = \frac{5}{8}$$

$$\text{So, } \frac{5x+6y}{10x+9y} = \frac{5}{8}$$

$$\text{So, } \frac{5x+6y}{10x+9y} = \frac{5}{8}$$

$$40x + 48y = 50x + 45y$$

$$\frac{x}{y} = \frac{3}{10}$$

$$10x = 3y;$$

So, option (b) is the correct answer.

62. Ans. C.

3 men of the first group do as much work in 2 hour as 4 men of the second group do in 3 hours

$$\text{So, } 3 \times M1 \times 2 = 4 \times M2 \times 3$$

$$\text{So, } M1 = 2 M2$$

Men Hours Days Work

40 8 15 1

$$60 \times 4 \times 2$$

$$\text{So, } 40 M1 \times 8 \times 15 \times 2 = 60 M2 \times 4 \times x$$

$$\frac{80M2 \times 8 \times 15 \times 2}{(60 M2 \times 4)} = 80 \text{ days}$$

$$\text{So, } x =$$

So, option (c) is the correct answer.

63. Ans. A.

Let the speed of boat and stream be u and v respectively

$$\text{So, } (u + v) = \frac{75}{t}$$

$$\text{And, } (u - v) = \frac{60}{t}$$

$$\frac{75}{u+v} = \frac{60}{u-v}$$

$$\text{So, } \frac{u+v}{u-v} = \frac{5}{4}$$

$$75u - 75v = 60u + 60v$$

$$\text{So, } u = 9v$$

Required percentage =

$$\frac{10v}{9v} \times 100 = 111 \frac{1}{9} \%$$

So, option (a) is the correct answer.

64. Ans. A.

A train crosses a pole in 24 sec

Let, Speed of the train = s

$$\text{So, length of the train (L) = s} \times 24$$

A second train of same length crosses a platform in 30 sec with a speed 20% more than the first train.

Let, the length of the platform = p

$$\frac{120}{100} S = \frac{24s+p}{30}$$

$$\text{So, } \frac{6s}{5} = \frac{4s}{5} + \frac{p}{30}$$

$$\text{So, } \frac{2s}{5} = \frac{p}{30}$$

$$\text{So, } \frac{2s}{5} = \frac{p}{30}$$

So, the ratio of length of train and length

$$\text{of platform} = \frac{s}{p} = \frac{5}{60} = \frac{1}{12}$$

$$S = \frac{p}{12} = \frac{L}{24} = \frac{p}{12}; \frac{L}{p} = \frac{2}{1}$$

So,

So, option (a) is the correct answer.

65. Ans. D.

A and B can fill the tank in 36 minutes

Let the time taken by pipe A to fill the tank = x minutes

Ans, the time taken by pipe B to fill the tank = y minutes

$$\frac{1}{x} + \frac{1}{y} = \frac{1}{36}$$

$$\text{So, } \frac{1}{x} + \frac{1}{y} = \frac{1}{36}$$

$$\text{So, part filled in 30 minutes} = \frac{30}{36} = \frac{5}{6}$$

$$\text{Remaining part} = 1 - \frac{5}{6} = \frac{1}{6}$$

$$\frac{1}{6}$$

So, $\frac{1}{6}$ th part is filled by A alone in 10 minutes

So total time taken by A to fill the tank = 60 minutes

And, time taken by B to fill =

$$\frac{1}{36} - \frac{1}{60} = \frac{10}{360} - \frac{6}{360} = \frac{4}{360} = \frac{1}{90}$$

So, pipe B can fill the tank in 90 minutes.

So, option (d) is the correct answer.

66. Ans. E.

$$(422 + 478 + 1417 + 546 + 737) \div (? \times 4) \approx 60$$

$$\Rightarrow 3600/? \approx 240$$

$$\Rightarrow ? = 15$$

67. Ans. D.

$$? \approx \sqrt{256} \times 19 + 8 \times 14$$

$$\Rightarrow ? \approx 16 \times 19 + 8 \times 14 = 416$$

68. Ans. B.

$$16 \times 24 + ? \approx 19 \times 32$$

$$\Rightarrow ? = 608 - 384 = 224$$

69. Ans. C.

$$28 \times 16 \approx ? \times 14 + 70$$

$$\Rightarrow 448 \approx ? \times 14 + 70$$

$$\Rightarrow ? = 378/14 = 27$$

70. Ans. B.

$$272 + 190 + 84 \approx ? \times 13 \times 6$$

$$\Rightarrow ? \approx 13 \times 6546 = 7$$

71. Ans. C.

$$\frac{1}{2} =$$

$$117.5 - \frac{1}{2} = 117,$$

$$117 + 2 = 119,$$

$$119 - 8 = 111,$$

$$111 + 32 = 143,$$

$$143 - 128 = ? = 15$$

72. Ans. E.

$$15 \times 1 - 3 = 12,$$

$$12 \times 3 - 5 = 31,$$

$$31 \times 5 - 7 = 148,$$

$$148 \times 7 - 9 = ? = 1027$$

$$1027 \times 7 - 9 = ? = 7140$$

$$7140 \times 7 - 9 = ? = 49983$$

73. Ans. B.

$$1 \times 7 + 6 = 13,$$

$$13 \times 6 + 5 = 83,$$

$$83 \times 5 + 4 = 419,$$

$$419 \times 4 + 3 = 1679,$$

$$1679 \times 3 + 2 = 5039$$

$$5039 \times 2 + 1 = 10079$$

$$10079 \times 1 + 0 = 10079$$

74. Ans. A.

$$12 \times 2 + 1 = 25,$$

$$25 \times 2 - 2 = 48,$$

$$48 \times 2 + 3 = 99,$$

$$99 \times 2 - 4 = 194,$$

$$194 \times 2 + 5 = 393,$$

$$393 \times 2 - 6 = ? = 780$$

$$780 \times 2 + 7 = 1567$$

$$1567 \times 1 + 0 = 1567$$

$$1567 \times 0 + 0 = 1567$$

$$1567 \times 0 + 0 = 1567$$

$$1567 \times 0 + 0 = 1567$$

$$1567 \times 0 + 0 = 1567$$

$$1567 \times 0 + 0 = 1567$$

$$1567 \times 0 + 0 = 1567$$

$$1567 \times 0 + 0 = 1567$$

$$1567 \times 0 + 0 = 1567$$

$$1567 \times 0 + 0 = 1567$$

$$1567 \times 0 + 0 = 1567$$

$$1567 \times 0 + 0 = 1567$$

$$1567 \times 0 + 0 = 1567$$

$$1567 \times 0 + 0 = 1567$$

$$1567 \times 0 + 0 = 1567$$

$$3^3 + 4 = 31,$$

$$4^3 + 5 = 69,$$

$$5^3 + 6 = 131,$$

$$6^3 + 7 = ? = 223$$

76. Ans. B.

$$\frac{60 \times \frac{2}{5} + 68 \times \frac{9}{17}}{60 \times \frac{2}{5} + 72 \times \frac{4}{9}} = \frac{15}{17}$$

Required Ratio =

77. Ans. D.

Number of female who bought ticket from C2 and C4 Theater together =

$$70 \times \frac{4}{7} + 66 \times \frac{5}{11} = 70$$

Number of males who bought ticket from

$$72 \times \frac{5}{9} = 40$$

C5 theatre =

Required Percentage =

$$\frac{70-40}{40} \times 100 = 75\%$$

78. Ans. C.

Total revenue earned by theatre C4 =

$$150 \times 14 + 200 \times 36 + 250 \times 30 = 16800$$

79. Ans. B.

Number of male who bought ticket from

$$65 \times \frac{6}{13} = 30$$

$$C1 = 30$$

Number of male who bought ticket from

$$70 \times \frac{3}{7} = 30$$

$$C2 = 30$$

Number of male who bought ticket from

$$60 \times \frac{2}{5} = 24$$

$$C3 = 24$$

$$= 30 + 30 + 24 = 84$$

$$\frac{84}{3} = 28$$

$$\therefore \text{Required average} = 28$$

80. Ans. A.

Number of males who bought ticket from C4, C5 and C6 together

$$66 \times \frac{6}{11} + 72 \times \frac{5}{9} + 68 \times \frac{9}{17}$$

$$= 36 + 40 + 36$$

$$= 112$$

Number of females who bought ticket from C4, C5 and C6 together

$$66 \times \frac{5}{11} + 72 \times \frac{4}{9} + 68 \times \frac{8}{17}$$

$$= 30 + 32 + 32$$

$$= 94$$

= 94

∴ Required difference = 112 - 94 = 18

81. Ans. B.

(i) $2x^2 - 5x + 3 = 0$

$2x^2 - 2x - 3x + 3 = 0 \Rightarrow 2x(x - 1) - 3(x - 1) = 0$

$\Rightarrow (x - 1)(2x - 3) = 0$

$x = 1, \frac{3}{2}$

(ii) $3y^2 - 4y + 1 = 0$ $3y^2 - 3y - y + 1 = 0$

$3y(y - 1) - 1(y - 1) = 0$

$(3y - 1)(y - 1) = 0 \Rightarrow y = \frac{1}{3}, 1$

∴ $x \geq y$

82. Ans. C.

(i) $x^2 - 17x + 72 = 0 \Rightarrow x^2 - 9x - 8x + 72 = 0$

$\Rightarrow x(x - 9) - 8(x - 9) = 0$

$(x - 8)(x - 9) = 0 \Rightarrow x = 8, 9$

(ii) $y^2 - 27y + 180 = 0$

$y^2 - 12y - 15y + 180 = 0 \Rightarrow y(y - 12) - 15(y - 12) = 0$

$\Rightarrow (y - 15)(y - 12) = 0$

$\Rightarrow y = 15, 12$

∴ $y > x$

83. Ans. B.

(i) $(x - 12)^2 = 0$

$\Rightarrow x = 12$

(ii) $y^2 - 21y + 108 = 0 \Rightarrow y^2 - 12y - 9y + 108 = 0$

$\Rightarrow y(y - 12) - 9(y - 12) = 0$

$\Rightarrow (y - 9)(y - 12) = 0 \Rightarrow y = 9, 12$

∴ $x \geq y$

84. Ans. E.

(i) $2x^2 + 7x + 5 = 0 \Rightarrow 2x^2 + 2x + 5x + 5 = 0$

$\Rightarrow 2x(x + 1) + 5(x + 1) = 0$

$\Rightarrow (2x + 5)(x + 1) = 0$

$x = -\frac{5}{2}, -1$

(ii) $3y^2 + 12y + 9 = 0$ $3y^2 + 9y + 3y + 9 = 0$

$\Rightarrow 3y(y + 3) + 3(y + 3) = 0$ $(3y + 3)(y + 3) = 0$

$\Rightarrow y = -1, -3$

∴ No relation can be established.

85. Ans. B.

(i) $x^2 + 2x - 35 = 0 \Rightarrow x^2 + 7x - 5x - 35 = 0$

$\Rightarrow (x + 7) - 5(x + 7) = 0$

$\Rightarrow (x - 5)(x + 7) = 0$

$x = 5, -7$

(ii) $y^2 + 15y + 56 = 0 \Rightarrow y^2 + 7y + 8y + 56 = 0$

$\Rightarrow y(y + 7) + 8(y + 7) = 0$

$(y + 8)(y + 7) = 0$

$\Rightarrow y = -8, -7$

∴ $x \geq y$

86. Ans. D.

Speed of Train 'X' on Tuesday = $\frac{450}{2} = 225$ km/hr

Speed of train 'Y' on Monday = $\frac{450}{3} = 150$ km/hr

Required% = $\frac{225 - 150}{150} \times 100 = 50\%$

87. Ans. D.

Speed of train 'Y' on Tuesday =

$\frac{450}{4.5} = 100$ km/hr

Speed of train 'X' on Wednesday =

$\frac{450}{3} = 150$ km/hr

Average speed = $2 \times 100 \times \frac{150}{250} = 120$ km/hr

88. Ans. A.

Speed of train 'X' on Friday =

$\frac{450}{4} \times 1.6 = 180 \frac{\text{km}}{\text{hr}}$

Speed of train 'Y' on Friday =

$$\frac{450}{5} \times 1.25 = 112.5 \frac{\text{km}}{\text{hr}}$$

$$\frac{450}{180} + \frac{450}{112.5} =$$

Required sum of time = 2.5 + 4 = 6.5 hr

89. Ans. C.

Speed of train 'X' on Tuesday =

$$\frac{450}{2} = 225 \text{ km/hr}$$

Speed of train 'Y' on Wednesday =

$$\frac{450}{1.5} = 300 \text{ km/hr}$$

Required difference = 300 - 225 = 75 km/hr

90. Ans. D.

$$\text{Required time} = \frac{450}{\left(\frac{450}{2} \times 1.6\right)} = 1.25 \text{ hr}$$

91. Ans. C.

- M has exam on Tuesday at 07.00 A.M.
- F has exam immediately before M. (F must be on Monday at 10 A.M.)
- M does not have exam on any of the days before K. (K must be before M. So, K must be on Monday at 7 A.M)
- H has exam immediately after the day of one who has exam on Monday.
- H does not have exam on any one of the days after I.
- Only three people have exam between K and I.
- The number of people who have exam between K and H is same as the number of people who have exam between G and L. (H must be on Tuesday at 10 A.M.)
7 A.M. 10 A.M.
Monday K F
Tuesday M H
Wednesday I
Thursday
Friday
- J does not have exam on any of the days after L.
- Only two people have exam between J and N.
- Neither I nor K does not have exam on Friday.
- L does not have exam at 10.00 AM.

- The one who has exam at 07.00 A.M. immediately before N.
- J does not have exam at 10.00 A.M.

So according to the above statement, we conclude:

| Student | Day | Time |
|---------|-----------|-----------|
| K | Monday | 07.00 A.M |
| F | Monday | 10.00 A.M |
| M | Tuesday | 07.00 A.M |
| H | Tuesday | 10.00 A.M |
| I | Wednesday | 07.00 A.M |
| G | Wednesday | 10.00 A.M |
| J | Thursday | 07.00 A.M |
| E | Thursday | 10.00 A.M |
| L | Friday | 07.00 A.M |
| N | Friday | 10.00 A.M |

Two people have their exam at 10'0 clock between I and L

92. Ans. B.

- M has exam on Tuesday at 07.00 A.M.
- F has exam immediately before M. (F must be on Monday at 10 A.M.)
- M does not have exam on any of the days before K. (K must be before M. So, K must be on Monday at 7 A.M)
- H has exam immediately after the day of one who has exam on Monday.
- H does not have exam on any one of the days after I.
- Only three people have exam between K and I.
- The number of people who have exam between K and H is same as the number of people who have exam between G and L. (H must be on Tuesday at 10 A.M.)
7 A.M. 10 A.M.
Monday K F
Tuesday M H
Wednesday I
Thursday
Friday
- J does not have exam on any of the days after L.
- Only two people have exam between J and N.
- Neither I nor K does not have exam on Friday.

- L does not have exam at 10.00 AM.
- The one who has exam at 07.00 A.M. immediately before N.
- J does not have exam at 10.00 A.M.

So according to the above statement, we conclude:

| Student | Day | Time |
|---------|-----------|-----------|
| K | Monday | 07.00 A.M |
| F | Monday | 10.00 A.M |
| M | Tuesday | 07.00 A.M |
| H | Tuesday | 10.00 A.M |
| I | Wednesday | 07.00 A.M |
| G | Wednesday | 10.00 A.M |
| J | Thursday | 07.00 A.M |
| E | Thursday | 10.00 A.M |
| L | Friday | 07.00 A.M |
| N | Friday | 10.00 A.M |

L has the exam on 7 am.

93. Ans. E.

- M has exam on Tuesday at 07.00 A.M.
- F has exam immediately before M. (F must be on Monday at 10 A.M.)
- M does not have exam on any of the days before K. (K must be before M. So, K must be on Monday at 7 A.M)
- H has exam immediately after the day of one who has exam on Monday.
- H does not have exam on any one of the days after I.
- Only three people have exam between K and I.
- The number of people who have exam between K and H is same as the number of people who have exam between G and L. (H must be on Tuesday at 10 A.M.)
7 A.M. 10 A.M.
Monday K F
Tuesday M H
Wednesday I
Thursday
Friday
- J does not have exam on any of the days after L.
- Only two people have exam between J and N.

- Neither I nor K does not have exam on Friday.
- L does not have exam at 10.00 AM.
- The one who has exam at 07.00 A.M. immediately before N.
- J does not have exam at 10.00 A.M.

So according to the above statement, we conclude:

| Student | Day | Time |
|---------|-----------|-----------|
| K | Monday | 07.00 A.M |
| F | Monday | 10.00 A.M |
| M | Tuesday | 07.00 A.M |
| H | Tuesday | 10.00 A.M |
| I | Wednesday | 07.00 A.M |
| G | Wednesday | 10.00 A.M |
| J | Thursday | 07.00 A.M |
| E | Thursday | 10.00 A.M |
| L | Friday | 07.00 A.M |
| N | Friday | 10.00 A.M |

L - Friday does not belong to the group.

94. Ans. B.

- M has exam on Tuesday at 07.00 A.M.
- F has exam immediately before M. (F must be on Monday at 10 A.M.)
- M does not have exam on any of the days before K. (K must be before M. So, K must be on Monday at 7 A.M)
- H has exam immediately after the day of one who has exam on Monday.
- H does not have exam on any one of the days after I.
- Only three people have exam between K and I.
- The number of people who have exam between K and H is same as the number of people who have exam between G and L. (H must be on Tuesday at 10 A.M.)
7 A.M. 10 A.M.
Monday K F
Tuesday M H
Wednesday I
Thursday
Friday
- J does not have exam on any of the days after L.

- Only two people have exam between J and N.
- Neither I nor K does not have exam on Friday.
- L does not have exam at 10.00 A.M.
- The one who has exam at 07.00 A.M. immediately before N.
- J does not have exam at 10.00 A.M.

So according to the above statement, we conclude:

| Student | Day | Time |
|---------|-----------|-----------|
| K | Monday | 07.00 A.M |
| F | Monday | 10.00 A.M |
| M | Tuesday | 07.00 A.M |
| H | Tuesday | 10.00 A.M |
| I | Wednesday | 07.00 A.M |
| G | Wednesday | 10.00 A.M |
| J | Thursday | 07.00 A.M |
| E | Thursday | 10.00 A.M |
| L | Friday | 07.00 A.M |
| N | Friday | 10.00 A.M |

H give his exam on Tuesday

95. Ans. D.

- M has exam on Tuesday at 07.00 A.M.
 - F has exam immediately before M. (F must be on Monday at 10 A.M.)
 - M does not have exam on any of the days before K. (K must be before M. So, K must be on Monday at 7 A.M)
 - H has exam immediately after the day of one who has exam on Monday.
 - H does not have exam on any one of the days after I.
 - Only three people have exam between K and I.
 - The number of people who have exam between K and H is same as the number of people who have exam between G and L. (H must be on Tuesday at 10 A.M.) 7 A.M. 10 A.M.
- Monday K F
Tuesday M H
Wednesday I
Thursday
Friday

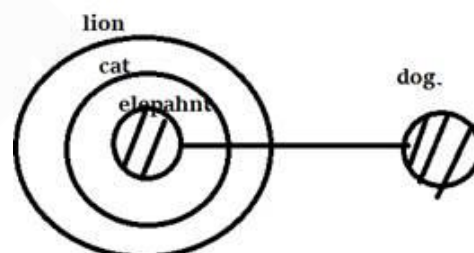
- J does not have exam on any of the days after L.
- Only two people have exam between J and N.
- Neither I nor K does not have exam on Friday.
- L does not have exam at 10.00 A.M.
- The one who has exam at 07.00 A.M. immediately before N.
- J does not have exam at 10.00 A.M.

So according to the above statement, we conclude:

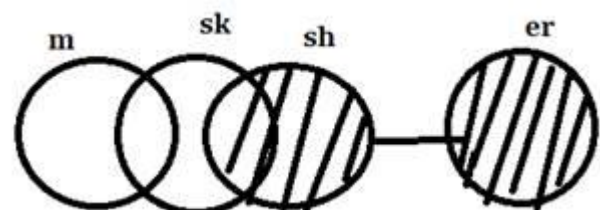
| Student | Day | Time |
|---------|-----------|-----------|
| K | Monday | 07.00 A.M |
| F | Monday | 10.00 A.M |
| M | Tuesday | 07.00 A.M |
| H | Tuesday | 10.00 A.M |
| I | Wednesday | 07.00 A.M |
| G | Wednesday | 10.00 A.M |
| J | Thursday | 07.00 A.M |
| E | Thursday | 10.00 A.M |
| L | Friday | 07.00 A.M |
| N | Friday | 10.00 A.M |

L & N have their exam on Friday

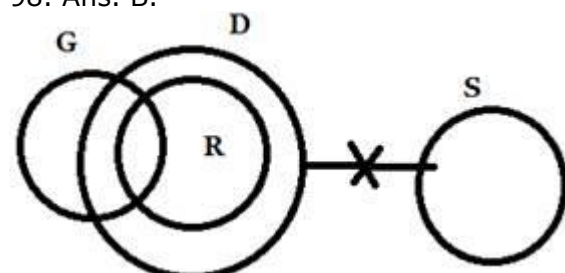
96. Ans. B.



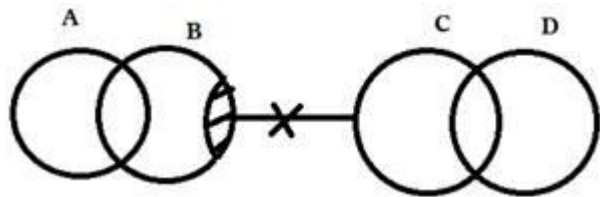
97. Ans. A.



98. Ans. B.



99. Ans. C.



100. Ans. B.

Step I : 1 Z 6 H & \$ 4 Y Q % ! 3 9 S I O
3 7 J L E U * @ 3 T R K

Step II: 1 Z 6 H & \$ 4 Y Q % ! 3 9 S I O
3 7 J L E U * @ 3 **T R K**

101. Ans. C.

Step I : 1 Z 6 H & \$ 4 Y Q % ! 3 9 S I O
9 9 J L E U * @ 3 T R K

Step II: 1 Z 6 H & \$ 4 Y Q % ! 3 9 S I O
9 9 J L E U * @ 3 T R K

Step III: Z 1 H 6 & \$ Y 4 Q % ! 3 S 9 I O
9 J 9 L E U * @ T 3 R K

102. Ans. B.

Step I : 1 Z 6 H & \$ 4 Y Q % ! 3 9 S I O
9 9 J L E U * @ 3 T R K

Step II: 1 Z 6 H & \$ 4 Y Q % ! 3 9 S I O
9 9 J L E U * @ 3 T R K

Step III: Z 1 H 6 & \$ Y 4 Q % ! 3 S 9 I O
9 J 9 L E U * @ T 3 R K

103. Ans. C.

In this new pattern coding decoding question only one word and one number is arranged in each step. Let us understand the logic behind it- In each step the words and numbers are arranged from the left end.

For words- The word which comes first according to alphabetical series is arranged first and different arrangement is used in different step.

Step 1 and 2- first and second letter are interchanged and third and fourth letter are interchanged

Step 3 and 4- First letter is unchanged, rest are reversed.

Step 5- First letter is unchanged, second letter is shifted to fourth place, third letter is shifted to second place, fourth letter is shifted to third place.

For numbers- Numbers start arranging as the highest number is arranged in 1st step then second highest number in second step and so on from left end after each word. And in the final step all the numbers are arranged in increasing order from left end.

Input- 54 roll 39 back 87 25 cash seat
46 beat

Step I- abkc 87 54 roll 39 25 cash seat
46 beat

Step II- ebta 54 abkc 87 roll 39 25 cash
seat 46

Step III- chsa 46 eata 54 abkc 87 roll 39
25 seat

Step IV- rlllo 39 chsa 46 eata 54 abkc 87
25 seat

Step V- sate 25 rlllo 39 chsa 46 eata 54
abkc 87

104. Ans. C.

In this new pattern coding decoding question only one word and one number is arranged in each step. Let us understand the logic behind it- In each step the words and numbers are arranged from the left end.

For words- The word which comes first according to alphabetical series is arranged first and different arrangement is used in different step.

Step 1 and 2- first and second letter are interchanged and third and fourth letter are interchanged

Step 3 and 4- second and fourth letter are interchanged and rests are same.

Step 5- First letter is unchanged, second letter is shifted to fourth place, third letter is shifted to second place, fourth letter is shifted to third place.

For numbers- Numbers start arranging as the highest number is arranged in 1st step then second highest number in second step and so on from left end after each word. And in the final step all the numbers are arranged in increasing order from left end.

Input- 54 roll 39 back 87 25 cash seat
46 beat

Step I- abkc 87 54 roll 39 25 cash seat
46 beat

Step II- ebta 54 abkc 87 roll 39 25 cash
seat 46

Step III- chsa 46 eata 54 abkc 87 roll 39
25 seat

Step IV- rlllo 39 chsa 46 eata 54 abkc 87
25 seat

Step V- sate 25 rlllo 39 chsa 46 eata 54
abkc 87

105. Ans. B.

In this new pattern coding decoding question only one word and one number

is arranged in each step. Let us understand the logic behind it- In each step the words and numbers are arranged from the left end.

For words- The word which comes first according to alphabetical series is arranged first and different arrangement is used in different step.

Step 1 and 2- first and second letter are interchanged and third and fourth letter are interchanged

Step 3 and 4- second and fourth letter are interchanged and rests are same.

Step 5- First letter is unchanged, second letter is shifted to fourth place, third letter is shifted to second place, fourth letter is shifted to third place.

For numbers- Numbers start arranging as the highest number is arranged in 1st step then second highest number in second step and so on from left end after each word. And in the final step all the numbers are arranged in increasing order from left end.

Input- 54 roll 39 back 87 25 cash seat 46 beat

Step I- abkc 87 54 roll 39 25 cash seat 46 beat

Step II- ebta 54 abkc 87 roll 39 25 cash seat 46

Step III- chsa 46 eata 54 abkc 87 roll 39 25 seat

Step IV- rlllo 39 chsa 46 eata 54 abkc 87 25 seat

Step V- sate 25 rlllo 39 chsa 46 eata 54 abkc 87

106. Ans. E.

- C sits second to right of the person from Russia.
- M is not from France.
- M does not face the person from Russia.
- O is an immediate neighbour of the person who faces the person from Russia.
- The person from Russia does not face the person from Cuba.
- Only one person sits between O and the person from France.
- The immediate neighbour of the person from France faces the person from Japan.
- The person from Canada faces the person from Bhutan.

- O is not from Bhutan.
- N faces the person from Angola.
- The one who faces P sits on the immediate left of A.
- B does not sit at any of the extreme ends of the line.

| | | | | |
|-------|----------|-----------|----------|---------|
| Row 2 | O/Canada | P/Denmark | N/France | M/Cuba |
| Row 1 | D/Bhutan | B/Russia | A/Angola | C/Japan |

107. Ans. D.

- C sits second to right of the person from Russia.
- M is not from France.
- M does not face the person from Russia.
- O is an immediate neighbour of the person who faces the person from Russia.
- The person from Russia does not face the person from Cuba.
- Only one person sits between O and the person from France.
- The immediate neighbour of the person from France faces the person from Japan.
- The person from Canada faces the person from Bhutan.
- O is not from Bhutan.
- N faces the person from Angola.
- The one who faces P sits on the immediate left of A.
- B does not sit at any of the extreme ends of the line.

| | | | | |
|-------|----------|-----------|----------|---------|
| Row 2 | O/Canada | P/Denmark | N/France | M/Cuba |
| Row 1 | D/Bhutan | B/Russia | A/Angola | C/Japan |

108. Ans. A.

- C sits second to right of the person from Russia.
- M is not from France.
- M does not face the person from Russia.
- O is an immediate neighbour of the person who faces the person from Russia.
- The person from Russia does not face the person from Cuba.
- Only one person sits between O and the person from France.
- The immediate neighbour of the person from France faces the person from Japan.
- The person from Canada faces the person from Bhutan.
- O is not from Bhutan.
- N faces the person from Angola.

- The one who faces P sits on the immediate left of A.
- B does not sit at any of the extreme ends of the line.

| | | | | |
|-------|----------|-----------|----------|---------|
| Row 2 | O/Canada | P/Denmark | N/France | M/Cuba |
| Row 1 | D/Bhutan | B/Russia | A/Angola | C/Japan |

109. Ans. C.

- C sits second to right of the person from Russia.
- M is not from France.
- M does not face the person from Russia.
- O is an immediate neighbour of the person who faces the person from Russia.
- The person from Russia does not face the person from Cuba.
- Only one person sits between O and the person from France.
- The immediate neighbour of the person from France faces the person from Japan.
- The person from Canada faces the person from Bhutan.
- O is not from Bhutan.
- N faces the person from Angola.
- The one who faces P sits on the immediate left of A.
- B does not sit at any of the extreme ends of the line.

| | | | | |
|-------|----------|-----------|----------|---------|
| Row 2 | O/Canada | P/Denmark | N/France | M/Cuba |
| Row 1 | D/Bhutan | B/Russia | A/Angola | C/Japan |

110. Ans. E.

- C sits second to right of the person from Russia.
- M is not from France.
- M does not face the person from Russia.
- O is an immediate neighbour of the person who faces the person from Russia.
- The person from Russia does not face the person from Cuba.
- Only one person sits between O and the person from France.
- The immediate neighbour of the person from France faces the person from Japan.
- The person from Canada faces the person from Bhutan.
- O is not from Bhutan.
- N faces the person from Angola.

- The one who faces P sits on the immediate left of A.
- B does not sit at any of the extreme ends of the line.

| | | | | |
|-------|----------|-----------|----------|---------|
| Row 2 | O/Canada | P/Denmark | N/France | M/Cuba |
| Row 1 | D/Bhutan | B/Russia | A/Angola | C/Japan |

111. Ans. A.

There can be two words that satisfy the given condition 63WBO and 75GRTY ---- BOW.

112. Ans. C.

On arrangement we will get three words in between the given condition.

24EAFR 42ENDO 63WBO 64TVZR

75GRTY

63 + 64 = 127

113. Ans. B.

From the given condition we will get 63WBO and 75GRTY so on arranging in descending order 75 GRTY 63BOW

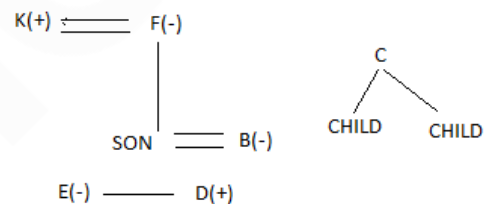
114. Ans. C.

F and K are a married couple

E is sister of D

B is a daughter in law F who is grandmother of E's brother

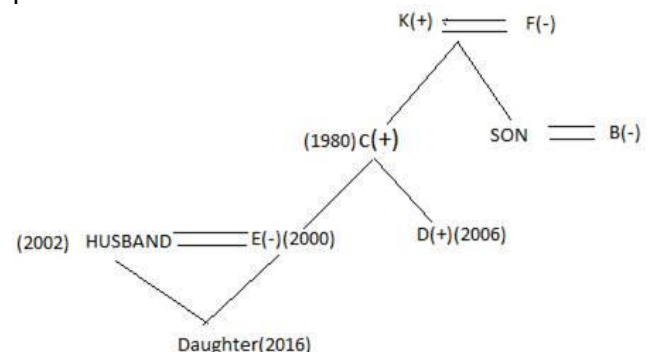
C has two children.



E's husband born in the year 2002 and 16 years age gap between E and E's daughter

D born in the year 2006 and his father born in the year 1980.

F has only two son and B's husband born in the year 1982 and his salary 22000 per month



The person who earn highest among husband of E and there is 13000 rs gap

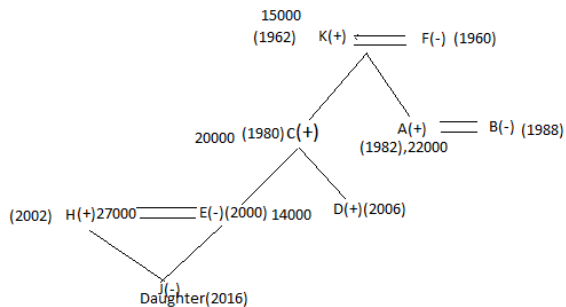


IBPS PO & Clerk Combo

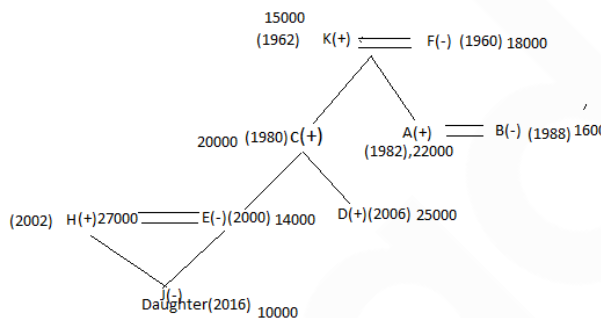
टेस्ट सीरीज़

अटेम्प्ट करें

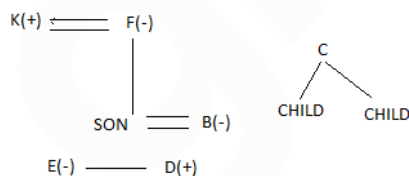
between salary E and E's husband
There is 6 years gap between B and B's husband
K has earn 15000 per month and his son earns 20000
K is not the oldest person in this family
and H is brother in law of D and J is a female person



The youngest person earns lowest salary among all
D has earns second highest among all
and F earns more than salary of her daughter in law.

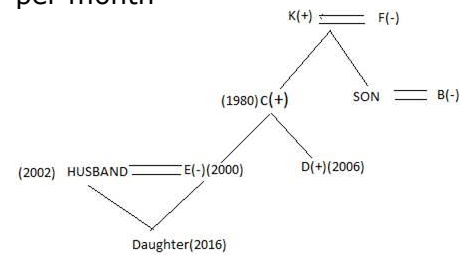


115. Ans. B.
F and K are a married couple
E is sister of D
B is a daughter in law F who is grandmother of E's brother
C has two children.

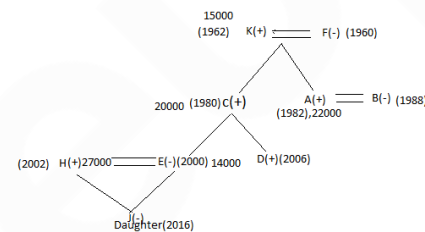


E's husband born in the year 2002 and 16 years age gap between E and E's daughter
D born in the year 2006 and his father born in the year 1980.
F has only two son and B's husband born in the year 1982 and his salary 22000

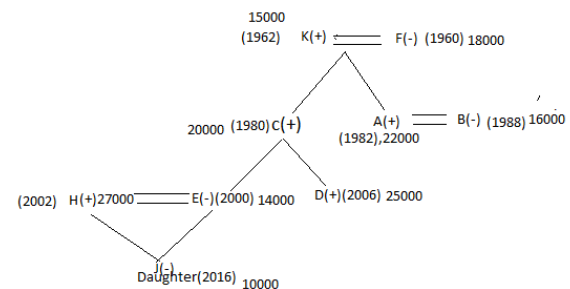
per month



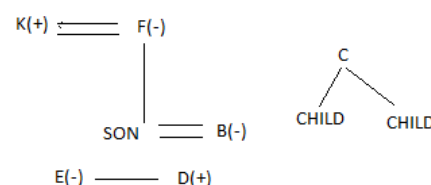
The person who earn highest among husband of E and there is 13000 rs gap between salary E and E's husband
There is 6 years gap between B and B's husband
K has earn 15000 per month and his son earns 20000
K is not the oldest person in this family
and H is brother in law of D and J is a female person



The youngest person earns lowest salary among all
D has earns second highest among all
and F earns more than salary of her daughter in law.



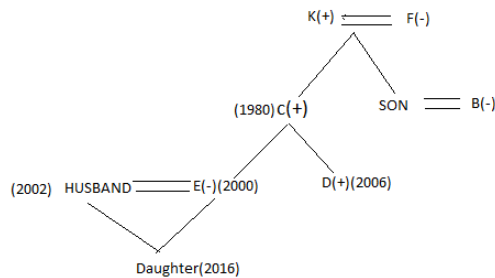
116. Ans. C.
F and K are a married couple
E is sister of D
B is a daughter in law F who is grandmother of E's brother
C has two children.



E's husband born in the year 2002 and 16 years age gap between E and E's daughter

D born in the year 2006 and his father born in the year 1980.

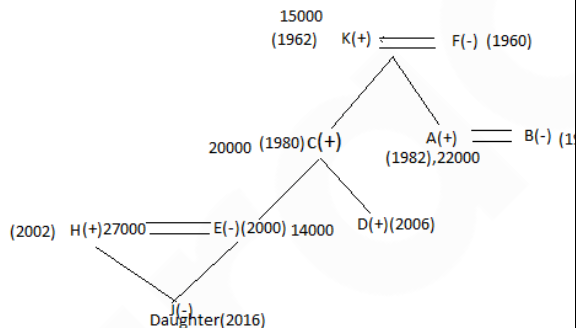
F has only two son and B's husband born in the year 1982 and his salary 22000 per month



The person who earn highest among husband of E and there is 13000 rs gap between salary E and E's husband
There is 6 years gap between B and B's husband

K has earn 15000 per month and his son earns 20000

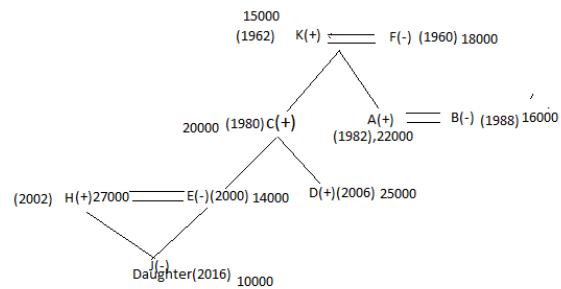
K is not the oldest person in this family and H is brother in law of D and J is a female person



The youngest person earns lowest salary among all

D has earns second highest among all and F earns more than salary of her

daughter in law.



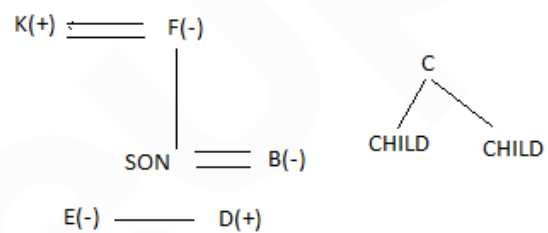
117. Ans. D.

F and K are a married couple

E is sister of D

B is a daughter in law F who is grandmother of E's brother

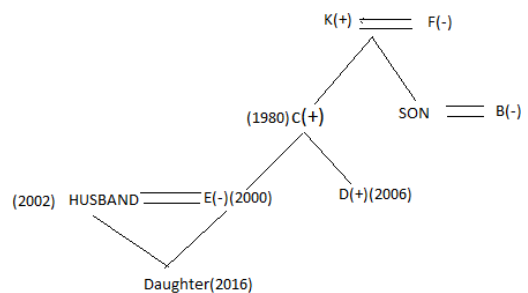
C has two children.



E's husband born in the year 2002 and 16 years age gap between E and E's daughter

D born in the year 2006 and his father born in the year 1980.

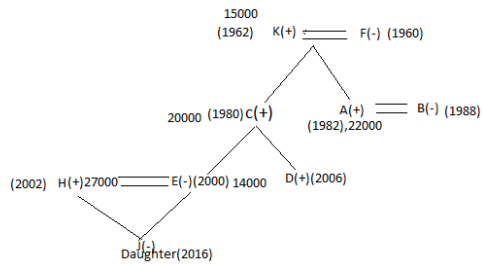
F has only two son and B's husband born in the year 1982 and his salary 22000 per month



The person who earn highest among husband of E and there is 13000 rs gap between salary E and E's husband
There is 6 years gap between B and B's husband

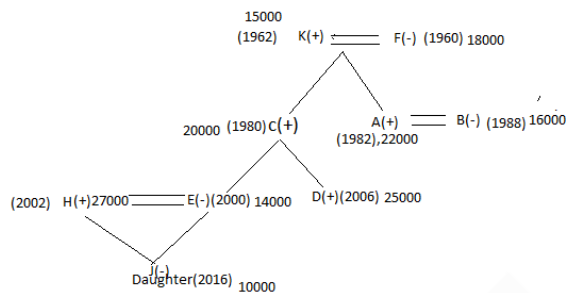
K has earn 15000 per month and his son earns 20000

K is not the oldest person in this family and H is brother in law of D and J is a female person



The youngest person earns lowest salary among all

D has earns second highest among all and F earns more than salary of her daughter in law.



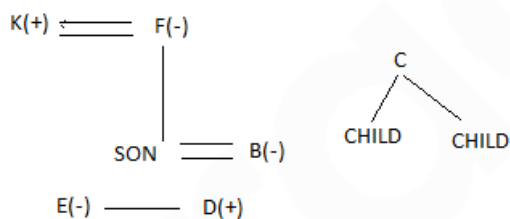
118. Ans. C.

F and K are a married couple

E is sister of D

B is a daughter in law F who is grandmother of E's brother

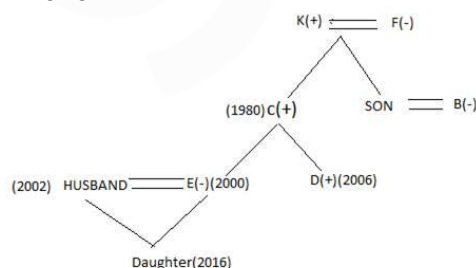
C has two children.



E's husband born in the year 2002 and 16 years age gap between E and E's daughter

D born in the year 2006 and his father born in the year 1980.

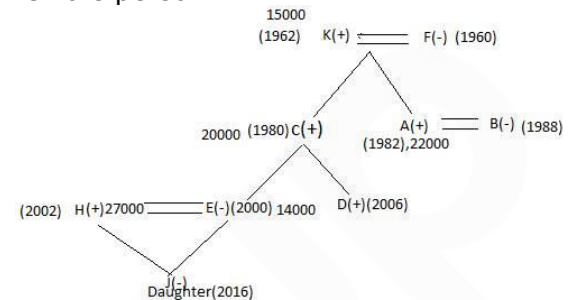
F has only two son and B's husband born in the year 1982 and his salary 22000 per month



The person who earn highest among husband of E and there is 13000 rs gap between salary E and E's husband
There is 6 years gap between B and B's husband

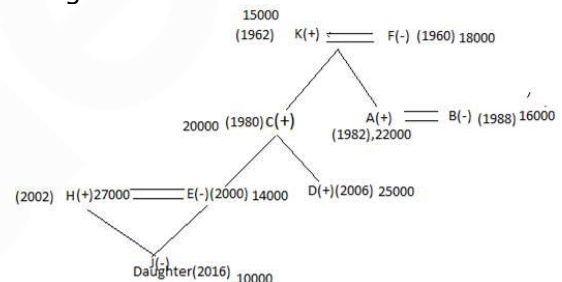
K has earn 15000 per month and his son earns 20000

K is not the oldest person in this family and H is brother in law of D and J is a female person



The youngest person earns lowest salary among all

D has earns second highest among all and F earns more than salary of her daughter in law.



119. Ans. A.

From I and II,

Q was born in a month which was having 31 days. Two persons were born between Q and P. P was born after Q. So Q either born in January or March then P was born either in April or June. R was born in a month which was having least number of days. R was born in February. U was born just after P. So U was either born in May or July. S was born after U. Q confirm born in January.

Hence, option A.

120. Ans. C.

From I,

$A \geq B < C = D > E \geq F = G$

We can't compare B and F.

From II,

$A \leq B = C > D > E < F < G$

We can't compare B and F.

From III,

IBPS PO & Clerk Combo

टेस्ट सीरीज़

अटेम्प्ट करें

$A > B > C = D \geq E > F < G$

Clearly B is greater to F.

So Only III is sufficient.

Hence, option C.

121. Ans. B.

1. The Orange Box is four boxes above the Blue Box.

2. There is exactly one box between B and H. The Blue Box is kept just below H. H is not colored in Green or Brown.

3. G is kept adjacent to B but not adjacent to H. A is kept just above C and neither of them is orange or Blue in color.

4. There are at least two boxes kept below C.

5. The box colored in White is kept just above the Grey Box. F is neither colored in Blue nor is kept at the top.

6. The Brown Box is not kept at the bottom.

7. E which is colored in Red is kept four boxes below A.

Pink is the color of the Box H.

| Color | Box |
|--------|-----|
| White | A |
| Grey | C |
| Orange | G |
| Brown | B |
| Red | E |
| Pink | H |
| Blue | D |
| Green | F |

122. Ans. C.

1. The Orange Box is four boxes above the Blue Box.

2. There is exactly one box between B and H. The Blue Box is kept just below H. H is not colored in Green or Brown.

3. G is kept adjacent to B but not adjacent to H. A is kept just above C and neither of them is orange or Blue in color.

4. There are at least two boxes kept below C.

5. The box colored in White is kept just above the Grey Box. F is neither colored in Blue nor is kept at the top.

6. The Brown Box is not kept at the

bottom.

7. E which is colored in Red is kept four boxes below A.

D box colour in blue.

| Color | Box |
|--------|-----|
| White | A |
| Grey | C |
| Orange | G |
| Brown | B |
| Red | E |
| Pink | H |
| Blue | D |
| Green | F |

123. Ans. E.

1. The Orange Box is four boxes above the Blue Box.

2. There is exactly one box between B and H. The Blue Box is kept just below H. H is not colored in Green or Brown.

3. G is kept adjacent to B but not adjacent to H. A is kept just above C and neither of them is orange or Blue in color.

4. There are at least two boxes kept below C.

5. The box colored in White is kept just above the Grey Box. F is neither colored in Blue nor is kept at the top.

6. The Brown Box is not kept at the bottom.

7. E which is colored in Red is kept four boxes below A.

The boxes kept at the top and the bottom respectively are colored in White

and Green.

| Color | Box |
|--------|-----|
| White | A |
| Grey | C |
| Orange | G |
| Brown | B |
| Red | E |
| Pink | H |
| Blue | D |
| Green | F |

124. Ans. A.

1. The Orange Box is four boxes above the Blue Box.
2. There is exactly one box between B and H. The Blue Box is kept just below H. H is not colored in Green or Brown.
3. G is kept adjacent to B but not adjacent to H. A is kept just above C and neither of them is orange or Blue in color.
4. There are at least two boxes kept below C.
5. The box colored in White is kept just above the Grey Box. F is neither colored in Blue nor is kept at the top.
6. The Brown Box is not kept at the bottom.
7. E which is colored in Red is kept four boxes below A.

Two boxes are kept between F and E

| Color | Box |
|--------|-----|
| White | A |
| Grey | C |
| Orange | G |
| Brown | B |
| Red | E |
| Pink | H |
| Blue | D |
| Green | F |

125. Ans. D.

1. The Orange Box is four boxes above the Blue Box.
2. There is exactly one box between B and H. The Blue Box is kept just below H. H is not colored in Green or Brown.
3. G is kept adjacent to B but not adjacent to H. A is kept just above C and neither of them is orange or Blue in color.
4. There are at least two boxes kept below C.
5. The box colored in White is kept just above the Grey Box. F is neither colored in Blue nor is kept at the top.
6. The Brown Box is not kept at the bottom.
7. E which is colored in Red is kept four boxes below A.

As per the solution figure, there are two boxes between G and the Pink Box.

| Color | Box |
|--------|-----|
| White | A |
| Grey | C |
| Orange | G |
| Brown | B |
| Red | E |
| Pink | H |
| Blue | D |
| Green | F |

126. Ans. B.

A child can learn before he/she turns five. So, assumption I is not implicit. Some schools admit children who are below five years of age, so government gives that advertisement. So, assumption II is implicit.

127. Ans. A. In the statement, it is given that the army should be deployed to rehabilitate the people displaced due to earthquake.

It means that army can be used for purposes other than war also. So, assumption I is implicit.

Assumption II is not implicit because the word 'only' is making it baseless as there may be some other measures which can

rehabilitate the displaced victims of earthquake.

128. Ans. E.

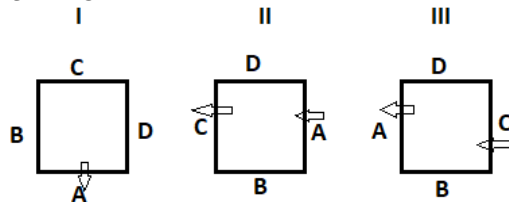
(a) does not follow because the NCR phenomenon can't be extrapolated to "most of the big cities".

(b) and (d) are probable consequences.

(c) shows us the other side.

(e) follows from the mention of "slump in home sales" and scope for "price correction".

129. Ans. A.



So from all 3 statements alone we can get that to whom B is sitting opposite to.

130. Ans. B.

From 2 and 3 statements,

| Place | Physics | Maths | Biology | Social | English | Hindi |
|-------|---------|-------|---------|--------|---------|-------|
| 6 | | no | | | no | |
| 5 | | | | yes | | |
| 4 | | yes | | | no | |
| 3 | | | | yes | | |
| 2 | | yes | | | no | |
| 1 | | | | yes | | |

6. Physics

5. English

4. Biology

3. Social

2. Maths

1. Hindi

131. Ans. B.

From statement 1 and 2

A is youngest while E is not the eldest.

B is the father of C, who is grandson of F. D is the wife of E's son and C's father.

F == E

|

B == D

|

C, A

From the above diagram, it is clear that F is the eldest in the family.

Hence, option B is the correct response.

132. Ans. D.

As given from the above conditions we will get the following two cases.

| | Flat 1 | Flat 2 | Flat 3 |
|-----------------------|--------|--------|--------|
| 3 rd Floor | T | Z | X |
| 2 nd Floor | W | S | U |
| 1 st Floor | Y | R | V |

OR

| | Flat 1 | Flat 2 | Flat 3 |
|-----------------------|--------|--------|--------|
| 3 rd Floor | T | Z | X |
| 2 nd Floor | W | R | U |
| 1 st Floor | Y | S | V |

133. Ans. A.

As given from the above conditions we will get the following two cases.

| | Flat 1 | Flat 2 | Flat 3 |
|-----------------------|--------|--------|--------|
| 3 rd Floor | T | Z | X |
| 2 nd Floor | W | S | U |
| 1 st Floor | Y | R | V |

OR

| | Flat 1 | Flat 2 | Flat 3 |
|-----------------------|--------|--------|--------|
| 3 rd Floor | T | Z | X |
| 2 nd Floor | W | R | U |
| 1 st Floor | Y | S | V |

134. Ans. C.

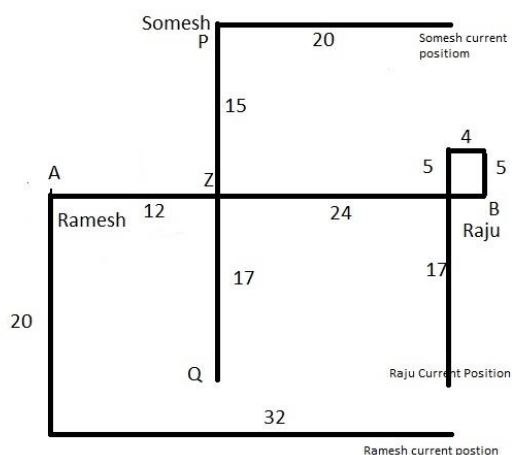
As given from the above conditions we will get the following two cases.

| | Flat 1 | Flat 2 | Flat 3 |
|-----------------------|--------|--------|--------|
| 3 rd Floor | T | Z | X |
| 2 nd Floor | W | S | U |
| 1 st Floor | Y | R | V |

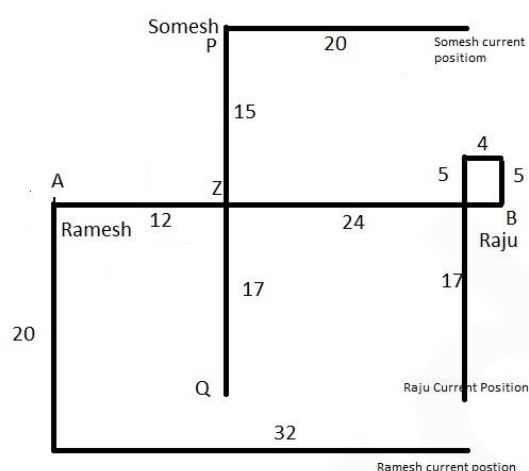
OR

| | Flat 1 | Flat 2 | Flat 3 |
|-----------------------|--------|--------|--------|
| 3 rd Floor | T | Z | X |
| 2 nd Floor | W | R | U |
| 1 st Floor | Y | S | V |

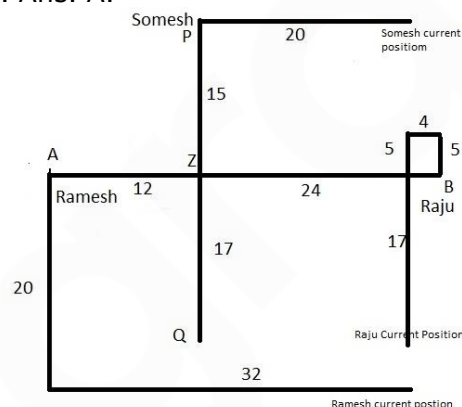
135. Ans. C.



136. Ans. C.



137. Ans. A.



138. Ans. A.

Note that the statement conveys to us that the delay in compensation is now a thing of the past. We can't infer about the specifics- 'insurance company' in statement (c) and 'IRCTC' in statement (d)

139. Ans. B.

Course of action I does not follow due to the words 'all' and 'immediate'. Course of action II follows because a system should be implemented to certify the quality of tiffin provided by the school.

140. Ans. E.

Both the actions follow because adequate police force should be deployed and vehicles on the road should be advised a diversion to avoid traffic congestion.

141. Ans. B.

The Nobel economics prize 2017 has been awarded to Richard Thaler of the University of Chicago for his contributions to behavioural economics.

Note: Thaler is an American economist & the Ralph and Dorothy Keller Distinguished Service Professor of Behavioral Science and Economics at the University of Chicago Booth School of Business.

142. Ans. C.

Vienna is the capital and largest city of Austria. It is also one of the nine states of Austria and a primary city of the country with a population of about 1.8 million.

143. Ans. A.

Vice President M. Venkaiah Naidu has inaugurated the third International Conference on Yoga in New Delhi. The theme of this year's conference is 'Yoga for Wellness'.

144. Ans. A.

FATF stands for Financial Action Task Force. It is an inter-governmental body established in 1989 and is Headquartered at Paris, France. The objectives of the FATF are to set standards and promote effective implementation of legal, regulatory and operational measures for combating money laundering, terrorist financing and other related threats to the integrity of the international financial system. The Financial Action Task Force (FATF) is an inter-governmental body established in 1989 on the initiative of the G7

145. Ans. C.

The compound annual growth rate (CAGR) is the mean annual growth rate of an investment over a specified period of time longer than one year.

146. Ans. E.

Sanjeev Stalin is an Indian professional footballer who plays as a defender for Indian Arrows in the I-League.

147. Ans. D.

The armies of India and China took part in the 7th edition of joint military exercise 'Hand-in-Hand 2018' on Dec 11-23, 2018 at Chengdu in China.

148. Ans. A.

Liquidity Adjustment Facility (LAF) was introduced by RBI during June, 2000 in phases, to ensure smooth transition and keeping pace with technological up gradation.

Hence, option A is correct.

149. Ans. A.

The money market primarily facilitates lending and borrowing of funds between banks and entities like Primary Dealers (PDs). Banks and PDs borrow and lend overnight or for the short period to meet their short term mismatches in fund positions. This borrowing and lending is on unsecured basis.

Note: 'Call Money' is the borrowing or lending of **funds for 1 day**. Where money is **borrowed** or lend for period between **2 days and 14 days** it is known as '**Notice Money**'. And '**Term Money**' refers to borrowing/lending of funds for **period exceeding 14 days**.

150. Ans. E.

Interest rate risk is also known as Market risk. Interest rate risk is the risk of increased volatility due to a change of interest rates.

151. Ans. B.

The Ukai Dam, constructed across the Tapti River, is the largest reservoir in Gujarat.

152. Ans. C.

- The headquarter of UCO Bank is located in **Kolkata**.
- UCO Bank, formerly United Commercial Bank, established in 1943 in Kolkata, is a major government-owned commercial bank of India.

153. Ans. C.

National **Automated** Clearing House (NACH).

NACH is a web-based platform to facilitate interbank, high volume, electronic transactions for Banks,

Financial Institutions, Corporates and Government. It basically functions like an electronic clearing service available especially for banks.

NACH was launched by the National Payment Corporation of India (NPCI). It is very useful to clear bulk and repetitive transactions that take place among banks.

154. Ans. C.

The BRBNMPL manages 2 Presses one at Mysore in Karnataka and the other at Salboni in West Bengal. The present capacity for both the presses is 16 billion note pieces per year on a 2-shift basis.

155. Ans. A.

MPC stands for - Monetary Policy Committee

The Monetary Policy Committee of India is a committee of the Reserve Bank of India that is responsible for fixing the benchmark interest rate in India. The committee comprises of six members - three officials of the Reserve Bank of India and three external members nominated by the Government of India. The Reserve Bank of India Act, 1934 (RBI Act) has been amended by the Finance Act, 2016, to provide for a statutory and institutionalized framework for a Monetary Policy Committee, for maintaining price stability, while keeping in mind the objective of growth.

156. Ans. A.

The Kisan Credit Card (KCC) scheme is a credit scheme introduced in August 1998 by Indian banks. This model scheme was prepared by the National Bank for Agriculture and Rural Development (NABARD) on the recommendations of R.V.GUPTA to provide term loans and agricultural needs.

157. Ans. B.

The working and operations of NBFCs are regulated by the **Reserve Bank of India** (RBI) within the framework of the [Reserve Bank of India Act, 1934] (Chapter III-B) and the directions issued by it.

Non-bank financial companies (NBFCs) are financial institutions that provide banking services without meeting the legal definition of a bank, i.e. one that does not hold a banking license.

NBFCs include a loan company, an investment company, asset finance company (i.e. a company conducting the business of equipment leasing or hire purchase finance) and Residuary Non-Banking Companies. NBFCs are incorporated under the Companies Act, 1956.

158. Ans. B.

Solution: Full form of CASA - **Current Account Saving Account.**

159. Ans. B.

The 17th summit of Shanghai Cooperation Organisation (SCO) summit has started in Astana, Kazakhstan from June 8, 2017. In this summit, India and Pakistan has become full members of the organization.

160. Ans. D.

World number one Rafael Nadal produced a ruthless performance to thrash Australian Nick Kyrgios 6-2 6-1 in the China Open final for his 75th career singles title.

161. Ans. A.

Economist Dr Rajiv Kumar named the new Vice-Chairman of NITI Aayog. The government also appointed Dr Vinod Paul, a paediatrician at AIIMS, as a member of the Aayog.

162. Ans. C.

ELSS stands for **Equity Linked Saving Scheme.**

An Equity Linked Savings Scheme (ELSS) is an open-ended Equity Mutual Fund that doesn't just help you save tax, but also gives you an opportunity to grow your money. It qualifies for tax exemptions under section (u/s) 80C of the Indian Income Tax Act.

163. Ans. B.

MasterCard Incorporated or **MasterCard Worldwide** is an American multinational financial services corporation headquartered in the MasterCard International Global Headquarters, Purchase, New York, United States, in Westchester County. The Global Operations Headquarters is located in O'Fallon, Missouri, United States, a suburb of Saint Louis, Missouri. Throughout the world, its principal business is to process payments between the banks of merchants and the card

issuing banks or credit unions of the purchasers who use the "MasterCard" brand debit and credit cards to make purchases. MasterCard Worldwide has been a publicly traded company since 2006. Prior to its initial public offering, MasterCard Worldwide was a cooperative owned by the 25,000+ financial institutions that issue its branded cards.

164. Ans. B.

The National **Institute** of Securities Markets (**NISM**) is a public trust **established** in 2006 by the Securities and Exchange Board of India (SEBI), the regulator of the securities markets in India.

The institute carries out a wide range of capacity building activities at various levels aimed at enhancing the quality standards of and increase the participation in the securities markets.

165. Ans. C.

The Port of Benghazi is a major seaport in the city of Benghazi, Libya, on the Mediterranean Sea coast within the Gulf of Sidra.

Benghazi port in east Libya reopened on 10th October 2017 for the first time in three years after being forced to cease operations because of clashes in the cradle of the 2011 revolution.

166. Ans. B.

GDR stands for Global Depository Receipt.

A global depository receipt (GDR) is a bank certificate issued in more than one country for shares in a foreign company. The shares are held by a foreign branch of an international bank. The shares trade as domestic shares but are offered for sale globally through the various bank branches.

167. Ans. A.

The scheme will be implemented through **Life Insurance Corporation of India (LIC).**

It aims to provide social security during old age and protect elderly persons aged 60 years and above against a future fall in their interest income due to uncertain market conditions.

The scheme is meant to provide an assured pension based on a guaranteed rate of return of 8% per annum for ten

years, with an option to opt for the pension on a monthly/quarterly/half-yearly or annual basis.

168. Ans. D.

Structured Financial Messaging System (SFMS) is a secure **messaging** standard developed to serve as a platform for intra-bank and inter-bank applications.

169. Ans. E.

Multilateral Investment Guarantee Agency (MIGA) is a member of the World Bank Group and is headquartered in **Washington, D.C.**

MIGA was established in 1988 as an investment insurance facility to encourage confident investment in developing countries.

World Bank group agencies- International Bank for Reconstruction and Development (IBRD)

International Development Association (IDA)

International Finance Corporation (IFC)

Multilateral Investment Guarantee Agency (MIGA)

International Centre for Settlement of Investment Disputes (ICSID)

170. Ans. B.

No tax would be deducted at source for PF withdrawals of up to Rs 50,000 from June 1.

The Finance Act, 2016 has amended section 192A of Income Tax Act, 1961 to raise the threshold limit of PF withdrawal from **Rs 30,000 to Rs 50,000** for Tax Deducted at Source (TDS)," the notification stated.

171. Ans. B.

CGTMSE (Credit guarantee fund Trust for Micro and Small Enterprise) is a loan scheme launched by the government to help small and micro business entrepreneurs flourish. The scheme is aimed at offering assistance to business enterprises via different banks and financial institutions in the country. It offers with required financial assistance from 5 lakhs to 65 lakhs for micro and small enterprises for establishing their business.

- The main objective of the CGTMSE scheme is to encourage new entrepreneurs for implementing

new and innovative business ideas via SMEs.

- The scheme is also aimed at offering guarantee regarding availability of credit for both lenders and borrowers in the form of financial security for their business.
- Under this scheme it is certain that business owners will be provided with capital and term loan to invest in their business plans.

172. Ans. A.

The National Adaptation Fund for **Climate Change** (NAFCC) is a Central Sector Scheme which was set up in the year 2015-16. The overall aim of NAFCC is to support concrete adaptation activities which mitigate the adverse effects of climate change.

173. Ans. C.

Amortization refers to writing off the value of "Intangible assets" over their useful life. Example of Intangible assets can be goodwill, patents, copyrights, trademarks etc.

174. Ans. B.

Brigadier (Dr.) B. D. Mishra is a **former** Brigadier of the Indian Army. He is the present Governor of Arunachal Pradesh.

175. Ans. A.

Balphakram National Park, **Meghalaya** is one of the well known national parks in India.

It is home to wide species of plants and animals and is located in the midst of the **Garo Hills** in **Meghalaya**. Balphakram National Park, **Meghalaya** is located around 3000 meters above sea level.

176. Ans. B.

The Achanakmar Wildlife Sanctuary is an Indian sanctuary in Mungeli district, Chhattisgarh State.

177. Ans. C.

Radha Mohan Singh was president of BJP's Bihar State unit from 2006 to 2009. He was elected to 11th *Lok Sabha*, 13th *Lok Sabha*, 15th *Lok Sabha* and is currently a member of the 16th *Lok Sabha*.

He represents Purvi Champaran constituency in Bihar state.

178. Ans. A.

JRD Tata Sports Complex. The JRD Tata Sports Complex Stadium (Hindi: जेआरडी टाटा स्पोर्ट्स काम्प्लेक्स) is a stadium in **Jamshedpur**, Jharkhand. It is currently used mostly for football matches and athletics competitions.

179. Ans. A.

The Dhirubhai Ambani Solar Park at Dhursar village near Pokhran in the Jaisalmer district of Rajasthan is a 40 megawatt photovoltaic power station, commissioned in 2012

180. Ans. A.

Indian Institute of Rice Research is located in Hyderabad, Telangana. It was established in 1965 by the Indian Council of Agricultural Research (ICAR). It was formally known as Directorate of Rice Research (DRR).

181. Ans. D.

* A cryptocurrency is a basically a digital asset that has been created to function as a medium of exchange, like cash.

* It uses cryptography to ensure the security of transactions — authentication and prevention of duplicate transactions — and to control the creation of new units of currency.

* This is different from cash in that cryptocurrencies have no physical form. These blur the boundaries between fiat and non-fiat currencies. They are simply numbers on a screen and there is no central bank that issues new currency. However, bitcoin has emerged as the popular face of cryptocurrencies.

182. Ans. B.

In insurance, **underwriting** is to sign and accept liability and guaranteeing payment in case loss or damage occurs. Underwriting is provided by a large financial service provider such as a bank, insurer or investment house.

183. Ans. B.

Lekh Tandon was an Indian filmmaker and actor. He had directed numerous Bollywood movies and Indian TV Serials. He gained national fame due to success of his directorial ventures Professor, Prince, Ek Baar Kaho and Agar Tum Na Hote

184. Ans. D.

The Government of Japan is hosting the 50th annual meeting of the Asian Development Bank (ADB) Board of Governors from May 4 to 7, 2017 in Yokohama, Tokyo. The theme of the meeting is 'Building Together the Prosperity of Asia

185. Ans. E.

The Rajasthan assembly has become the *first* in *India* to call attention and *adjournment* motions and proposals *online* from legislators to send them to the *state* government.

186. Ans. B.

The Supreme Court had formed a Committee on Prison Reforms chaired by former apex court judge, Justice **Amitava Roy**, to examine the various problems plaguing prisons in the country, from overcrowding to lack of legal advice to convicts to issues of remission and parole.

187. Ans. E.

Capital Adequacy Ratio (CAR) is also known as Capital to Risk (Weighted) Assets Ratio (CRAR), is the ratio of a bank's capital to its risk. National regulators track a bank's CAR to ensure that it can absorb a reasonable amount of loss and complies with statutory Capital requirements.

Total capital ratio (CRAR) = Eligible Total Capital / RWA for (Credit risk + Market risk + Operational risk)

188. Ans. A.

The Crisil FPI index would serve as the benchmark for the performance of FPI investments in government securities, and 'AAA' as well as 'AA' rated corporate bonds with residual maturity greater than three years.

189. Ans. E.

According to the government, after the abolition of the Foreign Investment Promotion Board (FIPB), now ministries will have to decide on FDI proposals within 60 days of the application and any rejection.

190. Ans. B.

In the list of D-SIBs, SBI bank has become the first bank by the Reserve Bank of India into Domestic Systemically Important Banks (D-SIBs) list.

IBPS PO & Clerk Combo

ऑनलाइन टेस्ट सीरीज़

पैक में शामिल हैं:

1. 60 से अधिक विस्तृत मॉक टेस्ट
2. मॉक फॉर्मेट में पूर्व वर्षीय प्रश्न पत्र
3. टेस्ट अंग्रेजी एवं हिन्दी में उपलब्ध
4. प्रस्तुति विश्लेषण एवं ऑल इंडिया रैंक
5. मोबाइल एवं डेस्कटॉप पर भी उपलब्ध

