

IBPS RRB Office Assistant Prelims 2018 Question Paper



Direction (1-5): Study the following information carefully answer the given questions:

Seven conferences on Marketing, Finance, HR, Real Estate, Hospitality, Management, and Banking were scheduled to be held in Mumbai, Pune, Delhi, Hyderabad, Indore, Bhopal and Chennai, on one day in a week starting from Monday and ending on Sunday. Conference on Hospitality was held in Hyderabad on Friday. Only one conference was held between conference on hospitality and Finance. Conference on Management was held immediately after HR but immediately before Banking. Conference on Management was not held in Indore. The conference held on Monday was held in Delhi. Only one Conference was held between conferences on Banking and the conference held in Mumbai. The conference on HR was not held in Mumbai. Conference in Pune was held immediately before conference in Indore. Conference on Real Estate was not held on Monday. Conference in Chennai was not held after conference in Mumbai.

1. If Delhi is related to Pune and Banking is related to Real Estate in a certain way, then to which to the following would Indore be related to, following the same pattern?
A. Bhopal B. Chennai
C. Mumbai D. Delhi
E. None of these
2. In which to the following cities was conference on Banking held?
A. Chennai B. Mumbai
C. Delhi D. Bhopal
E. Indore
3. How many conferences were held between conferences on Marketing and Real Estate?
A. None B. One
C. Two D. Three
E. Four
4. On which of the following days was the conference on HR held?
A. Monday B. Tuesday
C. Wednesday D. Thursday
E. Friday
5. Which of the following conferences was held on Monday?
A. Banking B. Management
C. HR D. Marketing
E. Cannot be determined

Direction (6-11): Study the information given below and answer the questions based on it.

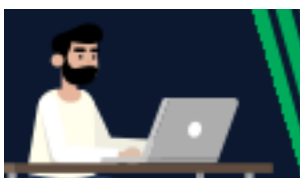
Y 4 8 A @ D F 3 # R N 1 M © W P δ J 2 E 5 Z *6 Q B 7 \$ H U 9 I K

6. Which of the following is the seventh to the right of the nineteenth from the right end of the above arrangement?
A. 1 B. D
C. Z D. \$
E. None of these
7. Four of the following five are alike in a certain way based on their positions in the above arrangement and so form a group. Which is the one that does not belong to that group?
A. D#A B. JWE
C. 562 D. \$9B
E. RM3
8. How many such consonants are there in the above arrangement each of which is immediately preceded by a symbol and immediately followed by a letter?
A. None B. One
C. Two D. Three
E. More than three
9. How many such numbers are there in the above arrangement each of which is immediately preceded by a letter and immediately followed by a symbol?
A. None B. One
C. Two D. Three
E. More than three
10. What should come next in the following series based on the above arrangement.
8@D, #N1, WδJ. 5 * 6,?
A. 7HU B. 7\$U
C. 7#9 D. BS#
E. None of these

Direction (11-15): Study the following information carefully and answer the given questions.

Seven people, P, Q, R, S, T, W and X sitting in a straight line facing north, not necessarily in the same order. R sits at one of the extreme ends of the line. T has as many people sitting on his right, as on his left. S sits third to the left of X. Q sits on the immediate left of W. Q does not sit at any of the extreme ends of the line.

11. If all the people are made to sit in alphabetical order from right to left, the positions of how many people will remain unchanged?



FREE TEST

IBPS RRB ASSISTANT COMBO EXAM

ATTEMPT NOW

- A. Five
C. Three
E. Two
12. How many people sit to the right of P?
A. Four
C. Two
E. None
13. Four of the following five are alike in a certain way, based on the information given above and so form a group which is the one that does not belong on that group?
A. S
C. X
E. W
14. Who amongst the following are the immediate neighbours of S?
A. T and R
C. W and R
E. None of these
15. Who amongst the following sits second to the right of the fourth person from the right end of the line?
A. W
C. R
E. None of these
16. **Direction:** In the following question, some statements followed by two conclusions (I and II) are given. Assuming the given statements to be true, find which of the two conclusions follow(s) the given statements and choose appropriate answer choice.
Statements:
 $A \geq B = C \geq D < E = F; G = D > H > I = J$
Conclusions:
I. $G \leq A$
II. $F > I$
A. Only I follows
B. Only II follows
C. Either I or II follows
D. Neither I nor II follow
E. Both I and II follow
17. **Direction:** In the following question, some statements followed by two conclusions (I and II) are given. Assuming the given statements to be true, find which of the two conclusions follow(s) the given statements and choose appropriate answer choice.
Statements:
 $X = L < D \leq G = M; U > E = D \geq F \leq B; P > O \geq N < S$
Conclusions:
I. $N < F$
II. $M \geq F$

- A. Only I follows
B. Only II follows
C. Either I or II follows
D. Neither I nor II follow
E. Both I and II follow
18. **Direction:** In the following question, some statements followed by two conclusions (I and II) are given. Assuming the given statements to be true, find which of the two conclusions follow(s) the given statements and choose appropriate answer choice.
Statements:
 $Q = J < D \leq G = K; W > E = D \geq X \leq C; K > O \geq V < S$
Conclusions:
I. $W > Q$
II. $K > C$
A. Only I follows
B. Only II follows
C. Either I or II follows
D. Neither I nor II follow
E. Both I and II follow
19. **Direction:** In the following question, some statements followed by two conclusions (I and II) are given. Assuming the given statements to be true, find which of the two conclusions follow(s) the given statements and choose appropriate answer choice.
Statements:
 $A > B > G < D; G > E > F$
Conclusions:
I. $A > F$
II. $B > D$
A. Only I follow
B. Both I and II follows
C. Neither I nor II follows
D. Only II follow
E. Either I or II follows
20. **Direction:** In the following question, some statements followed by two conclusions (I and II) are given. Assuming the given statements to be true, find which of the two conclusions follow(s) the given statements and choose appropriate answer choice.
Statements:
 $Q = C \geq E \geq R, P \leq O = R \geq U, Z \leq X < O \geq V$
Conclusions:
I. $Q > Z$
II. $Z = Q$
A. Only I follows
B. Only II follows
C. Either I or II follows
D. Neither I nor II follow
E. Both I and II follow



FREE TEST

IBPS RRB ASSISTANT COMBO EXAM

ATTEMPT NOW

Direction (21-25): Study the information given below and answer the questions based on it.

D, E, F, G, H, P, Q and R are seated in a straight line but not necessarily in the same order. Some of them are facing south while some are facing north.

G faces south direction. D sits fourth to the left of P. P sits at one of the extreme ends of the line. Both the immediate neighbours of D face North. E sits second to left of R. R is not an immediate neighbour of D. Neither R nor F sits at the extreme end of the line. F faces opposite direction to G. Both the immediate neighbours of F face North. H sits to the immediate left of Q. Immediate neighbours of G face opposite directions (i.e. if one neighbour of G faces North then the other faces South and vice-versa). Immediate neighbours of E face opposite directions (i.e., if one neighbour of E faces North then the other faces South and vice-versa). People sitting at the extreme ends face the opposite directions.

21. How many persons are seated between E and P?

| | |
|------|------|
| A. 4 | B. 3 |
| C. 6 | D. 1 |
| E. 2 | |
22. Who among the following sit at the extreme?

| | |
|------------------|------------|
| A. P and R | B. R and Q |
| C. P and Q | D. D and E |
| E. None of these | |
23. Who sits third to the right of G?

| | |
|------------------|------|
| A. F | B. D |
| C. No one | D. R |
| E. None of these | |
24. Who among the following sits exactly between F and Q?

| | |
|------------------|------|
| A. D | B. H |
| C. E | D. P |
| E. None of these | |
25. How many members are facing south?

| | |
|------------------|------|
| A. 3 | B. 2 |
| C. 5 | D. 4 |
| E. None of these | |

Direction (26-30): Following questions are based on the five three-digit numbers given below:

428, 391, 745, 682, 534

26. If '1' is added to the last digit of every odd number and '1' is subtracted from the last digit of every even number, what will be difference between the lowest odd number and the lowest even number thus formed?

- | | |
|--------|-------|
| A. 211 | B. 91 |
| C. 38 | D. 46 |
| E. 35 | |

27. If the positions of the first and the second digits of each of the numbers are interchanged, which of the following will be the difference between the highest and the second highest numbers thus formed?

| | |
|-------|--------|
| A. 69 | B. 106 |
| C. 79 | D. 121 |
| E. 46 | |
28. If 1 is subtracted from the middle digit of each number, then how many such numbers will be divisible by 3?

| | |
|---------|----------|
| A. None | B. One |
| C. Two | D. Three |
| E. Four | |
29. If all the numbers are arranged in descending order from left to right, which of the following will be sum of all three-digits of the number which is fourth from the left?

| | |
|-------|-------|
| A. 16 | B. 19 |
| C. 14 | D. 12 |
| E. 13 | |
30. What will be the resultant if second digit of the lowest number is divided by its first digit?

| | |
|---------|------|
| A. 2 | B. 3 |
| C. 1.33 | D. 6 |
| E. 1.2 | |
31. **Direction:** Each of the questions below consists of a question and two statements numbered I and II given below it. You have to decide whether the data provided in the statements are sufficient to answer the questions. Read both the statements.
 Who is oldest among Shane, Shaun, Joseph and Jason?
 I. Jason is older than Shane and Joseph.
 II. Shaun is younger than Joseph.
 A. If the data in statement I alone are sufficient to answer the question, while the data in statement II alone are not sufficient to answer the question.
 B. If the data in statement II alone are sufficient to answer the question, while the data in statement I alone are not sufficient to answer the question.
 C. If the data either in statement I or in statement II alone are sufficient to answer the question.
 D. If the data even in both statements I & II together are not sufficient to answer the question.
 E. If the data in both statements I and II together are necessary to answer the question.



FREE TEST
IBPS RRB ASSISTANT COMBO EXAM

ATTEMPT NOW

32. **Direction:** Each of the questions below consists of a question and two statements numbered I and II given below it. You have to decide whether the data provided in the statements are sufficient to answer the questions. Read both the statements.

How is 'happy' written in a code language?

I. 'I happy today' is written as 'ke ne que' and 'today happy day' is written as 'ke joi ne'.

II. 'I play' is written as 'qua pa'.

A. if the data in statement I alone are sufficient to answer the question, while the data in statement II alone are not sufficient to answer the question.

B. if the data in statement II alone are sufficient to answer the question, while the data in statement I alone are not sufficient to answer the question.

C. if the data either in statement I or in statement II alone are sufficient to answer the question.

D. if the data even in both statements I and II together are not sufficient to answer the question.

E. if the data in both statements I and II together are necessary to answer the question.

33. **Direction:** Each of the questions below consists of a question and two statements numbered I and II given below it. You have to decide whether the data provided in the statements are sufficient to answer the questions. Read both the statements.

What is the color of white snow in a color code?

I. 'Green' is called 'Black', 'Black' is called Blue, and 'Blue' is called 'Red'.

II. 'Red' is called 'White' and 'White' is called 'Orange'.

A. if the data in statement I alone are sufficient to answer the question, while the data in statement II alone are not sufficient to answer the question.

B. if the data in statement II alone are sufficient to answer the question, while the data in statement I alone are not sufficient to answer the question.

C. if the data either in statement I or in statement II alone are sufficient to answer the question.

D. if the data even in both statements I and II together are not sufficient to answer the question.

E. if the data in both statements I and II together are necessary to answer the question.

34. **Direction:** Each of the questions below consists of a question and two statements numbered, I and II given below it. You have to decide whether the data given in the statements are sufficient to answer the question. Read both statements and choose the most appropriate option.

Among M, N, D, P and K, who earns more than only the least earner among them?

I. N earns more than M and P but less than only D.

II. M earns more than P who earns more than K.

A. If the data in statement I alone are sufficient to answer the question, while the data in statement II alone are not sufficient to answer the question.

B. The data in statement II alone are sufficient to answer the question, while the data in statement I alone are not sufficient to answer the question.

C. The data either in statement I alone or in statement II alone are sufficient to answer the question.

D. If the data in statement I and II together are not sufficient to answer the question.

E. The data in both statements I and II together are necessary to answer the question.

35. **Direction:** Each of the questions below consists of a question and two statements numbered, I and II given below it. You have to decide whether the data given in the statements are sufficient to answer the question. Read both statements and choose the most appropriate option.

Who among P, Q, R, S and T is the lightest?

I. R is heavier than Q and T but lighter than S.

II. S is not the heaviest.

A. If the data in statement I alone are sufficient to answer the question, while the data in statement II alone are not sufficient to answer the question.

B. The data in statement II alone are sufficient to answer the question, while the data in statement I alone are not sufficient to answer the question.

C. The data either in statement I alone or in statement II alone are sufficient to answer the question.



FREE TEST
IBPS RRB ASSISTANT COMBO EXAM

ATTEMPT NOW

D. If the data in statement I and II together are not sufficient to answer the question.
 E. The data in both statements I and II together are necessary to answer the question.

Direction (36-38): Study the information given below and answer the questions based on it.

There are 7 members in a three-generation family. M is niece of N. O is sister-in-law of P. Q is sister of R's paternal grandmother's only son. N and P are not related by blood. S has only one granddaughter.

36. How R is related to M?
 A. Father B. Mother
 C. Cousin D. Son
 E. Daughter
37. If an outsider X married to S then how X is related to Q?
 A. Mother B. Brother
 C. Son D. Father
 E. None of these

Direction (38-40): Study the information given below and answer the questions based on it.

Point N is 7m to the west of Point Y, which is 8m to the south of Point S. Point N is 15m to the north of Point W and 10m to the west of Point C. Point A is 12m to the north of Point K which is 20m to the east of Point W. A is to the south of T which forms a straight line with Y.

38. N is at what distance and in which direction with respect to K?
 A. 24m, North-West B. 25m, North-West
 C. 25m, North-East D. 24m, East
 E. 25m, North
39. S is in which direction with respect to T?
 A. South-East B. North-West
 C. North-East D. West
 E. Cannot be determined
40. Which of the given combination of points form a rectangle?
 A. YCAW B. NTKW
 C. NWAK D. TKCW
 E. Such case does not exist
41. The upstream speed of a boat is 18 km/hr which is 500% more than the speed of stream. Find how much distance boat will cover in 3 hours while travelling in downstream.

- A. 66 km B. 63 km
 C. 72 km D. 75 km
 E. 78 km

42. If $A^2 - B^2 = 252$ and $A + B = 42$ then find the value of 'B'?
 A. 18 B. 16
 C. 14 D. 20
 E. 22
43. A alone can do a work in 40 days. The ratio of time taken by A and B to do the same work is 5: 3. Then, find in how many days both will complete the work together?
 A. 18 days B. 12 days
 C. 20 days D. 15 days
 E. 10 days
44. A train having speed of 72 km/hr crosses a pole in 18 sec and a platform in 33 sec. Find the length of platform?
 A. 320 m B. 300 m
 C. 330 m D. 360 m
 E. 350 m
45. The circumference of a circle is 66 cm. Find the approximate area of square if the radius of circle is two times of the side of a square.
 A. 18 cm² B. 32 cm²
 C. 25 cm² D. 36 cm²
 E. 28 cm²

Direction (46-50): There are total five departments in a company. There are total 90 employees in Finance department which is 25% of total employees in the company. 2/9 of the total employees of the company are working in HR department. Employees working in Sales department is 25% more than that in HR department. Ratio between employees working in Security and Housing department is 4:5.

46. Find number of employees working in HR department is what percent more than number of employees working in Security department?
 A. 250% B. 200%
 C. 150% D. 100%
 E. 50%
47. Find the average number of employees working in Sales, Finance and Housing department?
 A. 60 B. 70
 C. 80 D. 90
 E. 100



FREE TEST
 IBPS RRB ASSISTANT COMBO EXAM
 ATTEMPT NOW

48. Number of employees in Housing department is how much more than number of employees in Security department?
 A. 10 B. 20
 C. 30 D. 40
 E. 50
49. In Security department, 40% are female employees then find total male employees working in Security department?
 A. 16 B. 40
 C. 32 D. 8
 E. 24
50. Ratio between total number of male and female employees in HR department is 2 : 3. Find total number of male employees working in HR department?
 A. 32 B. 48
 C. 64 D. 40
 E. 56

Direction (51-55): Table given below shows marks obtained by four students in four different subjects in an exam. Study the data carefully and answer the following questions.

| Subjects Students | English | Hindi | Science | Maths |
|----------------------|---------|-------|---------|-------|
| Paul | 65 | 60 | 80 | 65 |
| Aditya | 75 | 75 | 60 | 75 |
| Neeraj | 85 | 55 | 95 | 85 |
| Sandy | 60 | 60 | 65 | 60 |

51. Marks scored by Sandy in English and Maths together is what percent of the Marks scored by Aditya and Neeraj in English together?
 A. 25% B. 50%
 C. 75% D. 100%
 E. 125%
52. Find the ratio of total marks scored by all four students together in Hindi to total marks scored by all four students together in Science?
 A. 5 : 6 B. 57: 50
 C. 1 : 1 D. 20 : 19
 E. 6 : 5
53. Total marks scored by Paul are how much more/less than total marks scored by Neeraj?
 A. 70 B. 60
 C. 40 D. 50
 E. 80
54. Find the average of the marks scored by Aditya in English, Hindi and Science together?
 A. 65 B. 85
 C. 80 D. 75
 E. 70

55. If maximum marks for each subject are 100 then find what percentage of total marks is obtained by Sandy?
 A. 64.25% B. 61.25%
 C. 67.25% D. 70.25%
 E. 73.25%
56. An article was sold at a discount of 20% at Rs. 1020. If the article was sold at discount of Rs. 199 in place of 20% discount then find the selling price.
 A. Rs. 1066 B. Rs. 1076
 C. Rs. 1086 D. Rs. 1096
 E. Rs. 1094
57. The total age of A, B and C four years hence will be 98 years. Find the age of C four years hence if the present age of A and B is 32 years and 23 years respectively.
 A. 31 yr. B. 32 yr.
 C. 35 yr. D. 37 yr.
 E. 33 yr.
58. A invests Rs. 12,000 for X months while B invests Rs. 16,000 for 9 months in a scheme. The profit share of B is Rs. 12,000 out of total profit Rs. 21,000. Then find the value of X?
 A. 6 months B. 9 months
 C. 8 months D. 7 months
 E. 10 months
59. A mixture of milk and water contains 60% milk and remaining water. How much water should be added (in percentage) in mixture to reverse the proportion of milk and water?
 A. 25% B. 37.5%
 C. 62.5% D. 75%
 E. 50%
60. The simple interest on a certain sum for 2 years at 8% per annum is Rs. 225 less than the compound interest on the same sum for 2 years at 10% per annum. The sum is:
 A. Rs. 3200 B. Rs. 4200
 C. Rs. 4000 D. Rs. 3600
 E. Rs. 4500

Direction (61-65): What approximate value should come in place of question mark (?) in the following questions?

61. $(\sqrt{1443}) \div 19.01 + 328 = ? \times 22$
 A. 10 B. 12
 C. 18 D. 15
 E. 22
62. $29.98\% \text{ of } 880.001 = ? + 110.9$
 A. 144 B. 153
 C. 158 D. 160
 E. 163



63. $(?)^2 + 255.93 = 49.932\%$ of 800.112
 A. 12 B. 8
 C. 15 D. 18
 E. 6

64. $\sqrt{144} + ? = 256$
 A. 230 B. 235
 C. 238 D. 241
 E. 244

65. 74.91% of ? = $(17.932)^2$
 A. 420 B. 425
 C. 408 D. 432
 E. 444

Direction (66-70): Find the wrong number in the given number series questions.

66. 100, 118, 136, 149, 160, 167, 172
 A. 172 B. 160
 C. 100 D. 118
 E. 136

67. 1.5, 2.5, 6, 24, 100, 505, 3036
 A. 1.5 B. 6
 C. 100 D. 3036
 E. 2.5

68. 160, 80, 80, 120, 240, 600, 900
 A. 240 B. 120
 C. 160 D. 900
 E. 600

69. 5040, 2520, 840, 210, 42, 8, 1
 A. 8 B. 5040
 C. 840 D. 1
 E. 42

70. 15, 17, 26, 151, 200, 929, 1050
 A. 17 B. 1050
 C. 15 D. 929
 E. 26

71. **Direction:** What value should come in place of question mark (?) in the following questions?
 $?^2 = 4^2 + 8^2 - 31$

A. 6 B. 7
 C. 8 D. 9
 E. 10

72. **Direction:** What value should come in place of question mark (?) in the following questions?
 $13 \times 6 + ? \times 4 = 18 \times 7$

A. 6 B. 8
 C. 10 D. 12
 E. 14

73. **Direction:** What value should come in place of question mark (?) in the following questions?
 40% of ? = 25% of 320 + 75% of 160

A. 500 B. 400
 C. 300 D. 200
 E. 100

74. **Direction:** What value should come in place of question mark (?) in the following questions?

$11^2 + 6^2 = ? + 37$

A. 130 B. 110
 C. 120 D. 140
 E. 150

75. **Direction:** What value should come in place of question mark (?) in the following questions?

$360 / ? = 12 \times 6 - 3^3$

A. 9 B. 5
 C. 6 D. 7
 E. 8

76. **Direction:** What value should come in place of question mark (?) in the following questions?

$\sqrt{225} + \sqrt{441} = ?^2$

A. 3 B. 4
 C. 5 D. 6
 E. 8

77. **Direction:** What value should come in place of question mark (?) in the following questions?

$16 \times 8 - ? = 2^6$

A. 64 B. 32
 C. 128 D. 192
 E. 96

78. **Direction:** What value should come in place of question mark (?) in the following questions?

$16 \times 54 \div 36 + 6 = ?$

A. (144/7) B. 30
 C. 20 D. 24
 E. 16

79. **Direction:** What value should come in place of question mark (?) in the following questions?

$? = \sqrt{(6 \times 3 \times 5 + 50\% \text{ of } 620)}$

A. 14 B. 16
 C. 18 D. 10
 E. 20

80. **Direction:** What value should come in place of question mark (?) in the following questions?

$6^2 = (18 \times 8 - ? \times 2) / 3$

A. 36 B. 27
 C. 18 D. 9
 E. 54



FREE TEST
IBPS RRB ASSISTANT COMBO EXAM

ATTEMPT NOW



IBPS RRB Assistant Combo 2019

Online Test Series

- 1. Based on the Latest Exam Pattern**
- 2. Available in Hindi & English**
- 3. All India Rank & Performance Analysis**
- 4. Detailed Explanation of Solutions**
- 5. Available on Mobile & Desktop**

